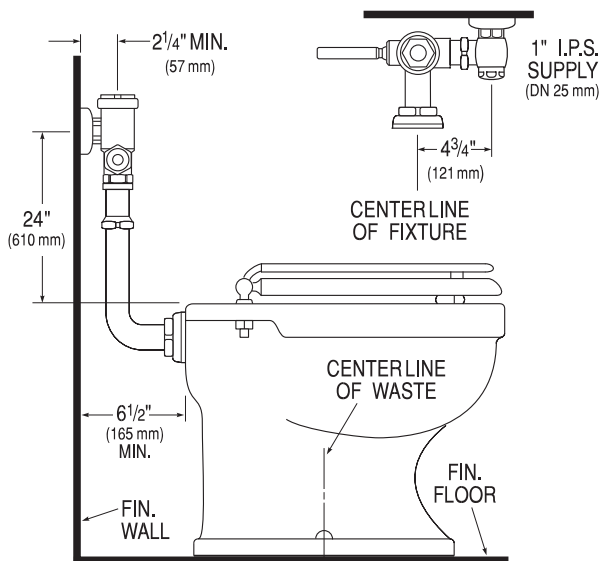


Listed by I.A.P.M.O.



Gem•2® Model Flushometer

122

Description

Exposed, Water Closet Flushometer for floor mounted back spud bowls.

Flush Cycle

- ☐ Model 122 Water Saver (3.5 gpf/13.2 Lpf)
- ☐ Model 122-1.6 Low Consumption (1.6 gpf/6.0 Lpf)

Specifications

Quiet, Exposed, Piston Type, Chrome Plated Closet Flushometer with the following features:

- Fixed Volume Piston with Filtered O-ring Bypass
- ADA Compliant Metal Oscillating Non-Hold-Open Handle
- 1" I.P.S. Screwdriver Bak-Chek® Angle Stop
- Locking Vandal Resistant Stop Cap
- Adjustable Tailpiece
- Vacuum Breaker Flush Connection
- Spud Coupling, Wall and Spud Flanges for 1½" Exposed Back Spud
- High Copper, Low Zinc Brass Castings for Dezincification Resistance
- Non-Hold-Open Handle and No External Volume Adjustment to Ensure Water Conservation
- Handle Packing, Stop Seat and Vacuum Breaker Molded from PERMEX™ Rubber Compound for Chloramine Resistance

Valve Body, Cover, Tailpiece and Control Stop shall be in conformance with ASTM Alloy Classification for Semi-Red Brass. Valve shall be in compliance to the applicable sections of ASSE 1037, ANSI/ASME A12.19.2, and Military Specification V-29193.

Variations

- ☐ **U** 1¼" Flush Connection and Spud Coupling
- ☐ **XYV** Less Vacuum Breaker
- ☐ **YB** Sweat Solder Adapter Kit
- ☐ **YBYC** Sweat Solder Adapter & Cast Wall Flange with Set Screw
- ☐ **YJ** Split Ring Pipe Support
- ☐ **YK** Solid Ring Pipe Support
- ☐ **YI** Two Wall Bumpers (for open front seat without cover)

Note: Bak-Chek® Angle Stop available with 1" Whitworth Thread (please specify).

See Accessories Section of the Sloan catalog for details on these and other Flushometer variations.

This space for Architect/Engineer approval

Job Name _____ Date _____

Model Specified _____ Quantity _____

Variations Specified _____

Customer/Wholesaler _____

Contractor _____

Architect _____

The information contained in this document is subject to change without notice.

SLOAN®

