

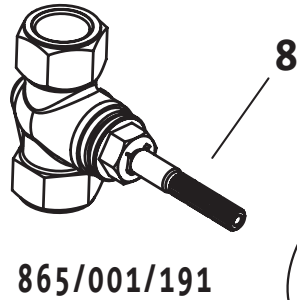
Classic / Victorian / Colonial

1/2" or 3/4" Wall Valve - Lever

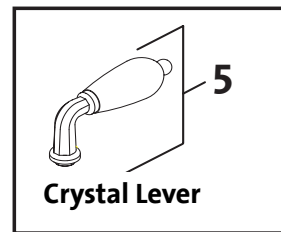
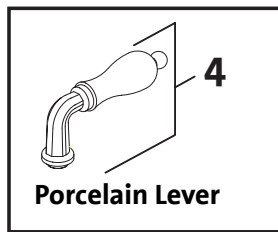
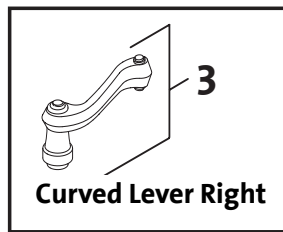
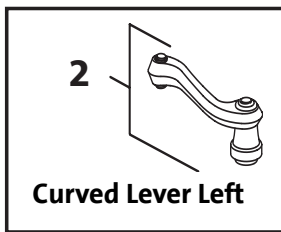
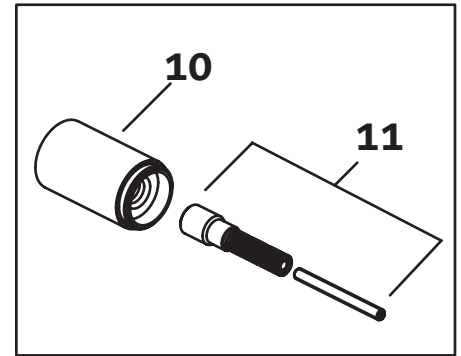
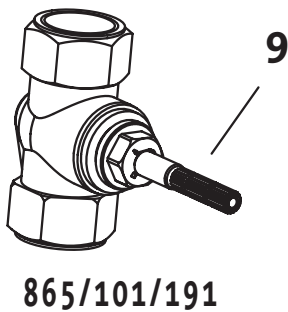
865/112/... 865/114/... 865/116/... 865/029/... 865/829/...
 865/032/... 865/034/... 865/035/... 865/039/... 865/839/...
 865/712/... 865/714/... 865/716/... 865/729/... 865/819/...

JADO

1/2" Wall Valve



3/4" Wall Valve



Replace "XXX" with the appropriate finish code:

Polished Chrome = 100, Old Bronze = 105, UltraBrass = 113, Brushed Nickel = 144
 Platinum Nickel = 150, Diamond = 167, Antique Nickel = 444

The following finishes apply only to Porcelain Lever :

UltraBrass/White Porcelain = 122, Brushed Nickel/White Porcelain = 124, Old Bronze/White Porcelain = 125,
 Polished Chrome/White Porcelain = 128, Platinum Nickel/White Porcelain = 152, Diamond/White Porcelain = 153

Example Repair Part order:

H960019.105 in Old Bronze
 H960019.167 in Diamond

| Pos. | Description | Repair Part Number | Delivery quantity | Pos. | Description | Repair Part Number | Delivery quantity |
|------|--------------------|--------------------|-------------------|------|-------------------------|--------------------|-------------------|
| 1 | Straight Lever | H960019.XXX | 1 Piece | 7 | Rosette | H960204.XXX | 1 Piece |
| 2 | Curved Lever Left | H960018.XXX | 1 Piece | 8 | 1/2" Cartridge | H960520.191 | 1 Piece |
| 3 | Curved Lever Right | H960017.XXX | 1 Piece | 9 | 3/4" Cartridge | H960935.191 | 1 Piece |
| 4 | Porcelain Lever | H960028.XXX | 1 Piece | 10 | Barrel Sleeve Extension | H960202.XXX | 1 Piece |
| 5 | Crystal Lever | H960308.XXX | 1 Piece | 11 | Stem Extension | H960764.191 | 1 Piece |
| 6 | Barrel Sleeve | H960203.XXX | 1 Piece | | | | |