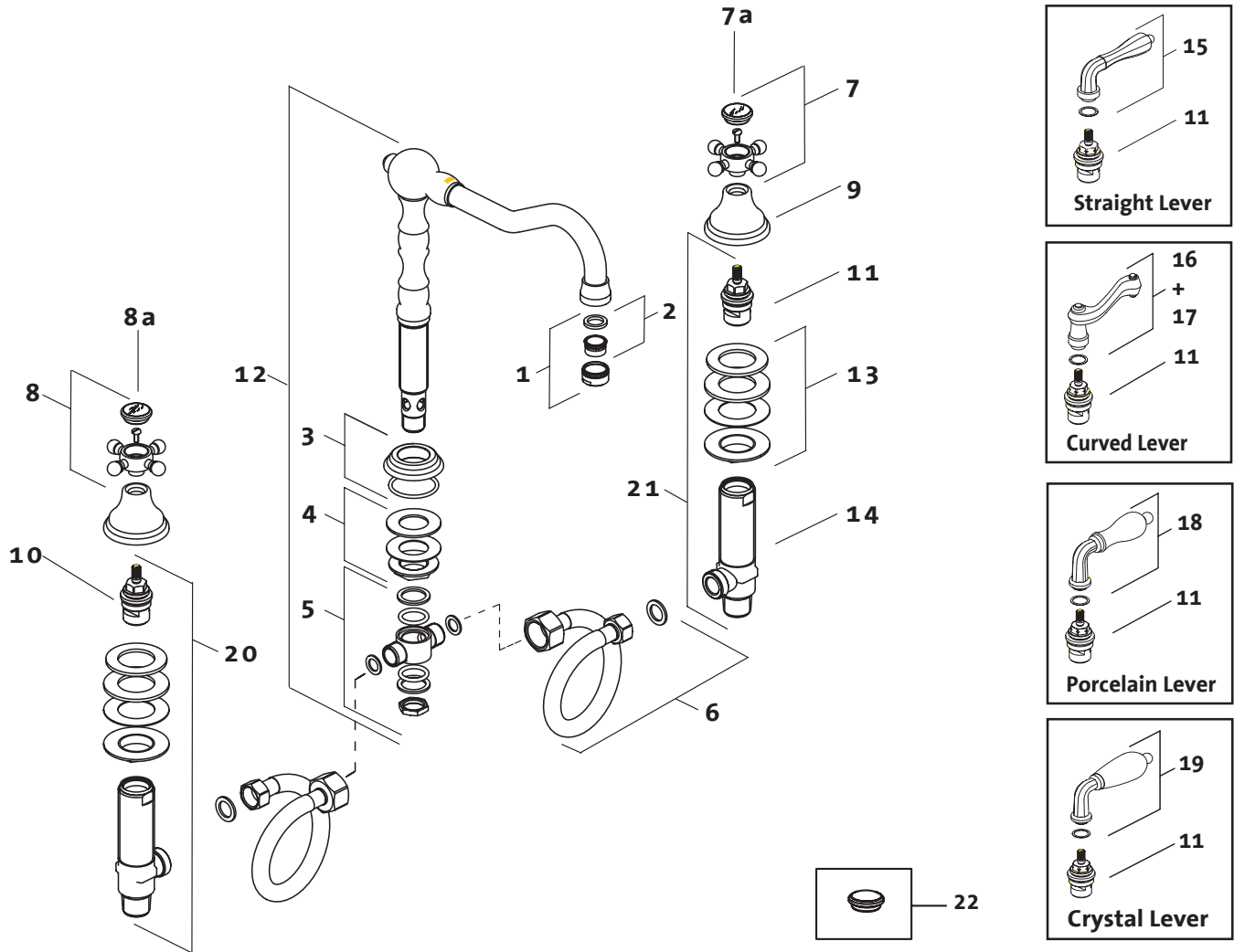


Victorian Roman Tub Set

853/038/... 853/048/... 853/058/... 853/068/... 853/078/...

JADO



Replace "XXX" with the appropriate finish code:

Polished Chrome = 100, Old Bronze = 105, UltraBrass = 113, Brushed Nickel = 144
Platinum Nickel = 150, Diamond Finish = 167, Antique Nickel = 444

The following finishes apply only to Porcelain Lever :

UltraBrass/White Porcelain = 122, Brushed Nickel/White Porcelain = 124, Old Bronze/White Porcelain = 125,
Polished Chrome/White Porcelain = 128, Platinum Nickel/White Porcelain = 152, Diamond/White Porcelain = 153

Example Repair Part order:

H960313.105 in Old Bronze
H960313.167 in Diamond Finish

Pos.	Description	Repair Part Number	Delivery quantity	Pos.	Description	Repair Part Number	Delivery quantity
1	Aerator Assembly	H960313.XXX	1 Set	12	Spout Assembly	853035.XXX	1 Piece
2	Aerator	H960069.191	1 Piece	13	Mounting Kit	H960294.191	1 Set
3	Spout Rosette	H960477.XXX	1 Piece	14	3/4" Side Valve Body	H961206.191	1 Piece
4	Mounting kit	H960353.191	1 Set	15	Straight Lever	H960019.XXX	1 Piece
5	Spout Tee	H960128.191	1 Piece	16	Curved Lever Right	H960017.XXX	1 Piece
6	Flex Hose	H960194.191	1 Piece	17	Curved Lever Left	H960018.XXX	1 Piece
7	Cross Handle Set "Cold"	H960759.XXX	1 Set	18	Porcelain Lever	H960028.XXX	1 Piece
7a	Handle Cap "Cold"	H960526.XXX	1 Set	19	Crystal Lever	H960308.XXX	1 Piece
8	Cross Handle Set "Hot"	H960758.XXX	1 Set	20	3/4" Side Valve Rough (Counterclockwise on)	H960743.191	1 Piece
8a	Handle Cap "Hot"	H960551.XXX	1 Set	21	3/4" Side Valve Rough (Clockwise on) - Levers	H960893.191	1 Piece
9	3/4" Deck Valve Bell	H960099.XXX	1 Piece	22	All Metal Handle Cap	H960986.XXX	1 Piece
10	3/4" Cartridge (Counterclockwise on)	H960001.191	1 Piece				
11	3/4" Cartridge (Clockwise on)	H960170.191	1 Piece				