



Features:

- Cast brass spout and side valves
- Ceramic disc valve cartridge
- 8" Center to Center Installation
- Available with Cross or Lever Handles
- Grid drain with overflow hole included

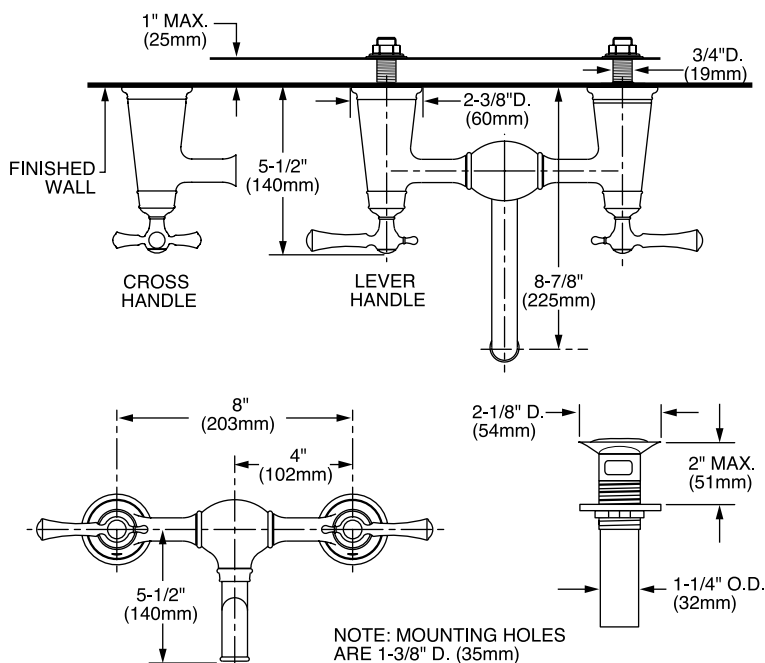
Pictured: 842/612 Wall Mount Bridge Faucet with Lever Handles

Maximum Flow Rate: 2.2 GPM (8.3L/min)

	Handle Type	Product Number
Wall Mount Bridge Faucet	Cross	842/602
Wall Mount Bridge Faucet	Lever	842/612



Available Finishes:	Finish Code
Polished Chrome	100
Old Bronze	105
Brushed Nickel	144
Platinum Nickel	150
Antique Nickel	444



IMPORTANT: These measurements are subject to change or cancellation. No responsibility is assumed for use of superseded or voided pages.

CODES & STANDARDS

These products meet and exceed the following codes and standards:

ASME A112.18.1

CSA B125

NSF 61/Section 9



Meets the American Disabilities Act Guidelines and **ANSI A117.1** Requirements for the physically challenged.

