

# inwood

OFFICE  
ENVIRONMENTS



trek

modular casegoods





modular casegoods

each day,

**people work,**

adapt,

and become flexible



#### **trek**

*Experience a modular offering of desks, workstations and support furniture that is designed to function in every working environment. Not only is the configuration of these components flexible, but the specification of surfaces is designed to create coordinated statements of visual harmony. No matter what your budgetary or aesthetic goal is, there's a combination that will exceed your criteria.*

#### **components**

*The environment you need.*

*To create a variety of units, simply combine your choice of top shape with a chassis for support. Add modesty panels, filing solutions, overhead storage and cabinetry for custom desks, returns, credenzas, U-units, L-units, reception units and multi-user stations that are configured to the exacting specifications of your project.*

#### **surfaces**

*The look you want.*

*Individual modular pieces can be specified in a matching or contrasting finish, using a diverse yet coordinated palette. Choose from real wood veneers for warmth, laminates for everyday usability or a specially-formulated Durasyn coating that will stand up to the toughest of working conditions.*

#### **details**

*left, finishes  
right, upper storage*



embracing modularity,

**people are productive**

modular casegoods



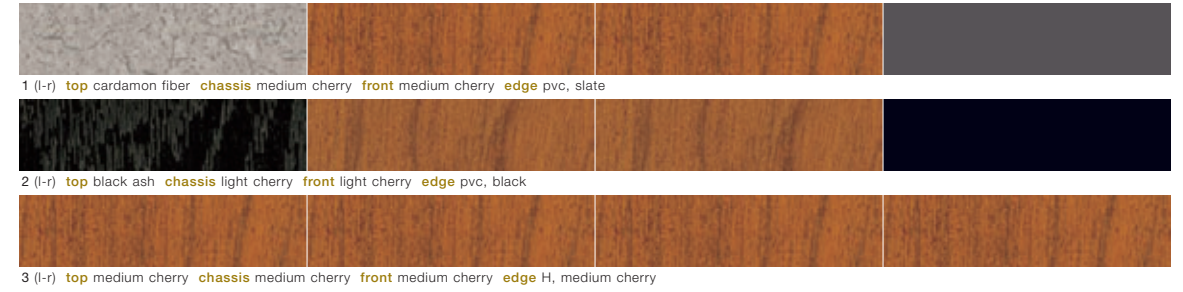
trek



personal workstations



modular casegoods



trek



large personal workstations



modular casegoods



trek

multi-person workstations



modular casegoods



trek



maximized workstations



modular casegoods



trek



black bar



chrome bar



chrome cable



H



I

**top**

Choose any laminate or wood veneer.

**chassis**

Choose any Durasyn color finish or wood veneer.

**fronts**

Choose any Durasyn color finish or wood veneer.

**edge**

Choose a PVC edge, a self edge or a wood edge. PVC and self edges may be specified with laminate tops only and wood edges may be specified in either "H" or "I" styles as shown at left.

**pull**

Choose any pull from the styles shown at left.

*It's that easy to specify.*

*Reference the Inwood Price List for components.*

*Contact your Inwood Office Environments representative for specific availability of optional finishes and lead times.*

wood casegoods,

**progressive office environments**

**pvc**  
edge



**BL** black (pvc)



**SL** slate (pvc)



**FS** folk stone (pvc)



**FG** fog grey (pvc)



**BB** bethany beige (pvc) \*



**HZ** haze (pvc)



**LB** light beige (pvc)

\* formerly pepperdust

**durasyn**  
chassis & front



**TW** tumbleweed



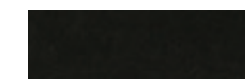
**SD** sand



**CT** cactus



**ST** sunset



**BL** black



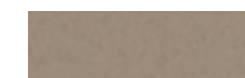
**BP** black pearl



**NG** northsea grey



**FG** fog



**CH** chinchilla



**NB** natural beige



**PE** pearl



**RK** rock

**laminate**  
top & self edge



**NV** negotiating in geneva



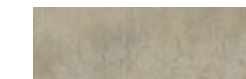
**CN** cinnamon fiber



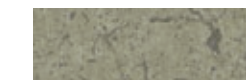
**CF** copper fusion



**OS** olive serenity



**GV** galvan



**TY** thyme fiber



**CL** chilli fiber



**BA** black ash



**GS** graphite spektrum



**CU** curacao fiber



**CM** cardamon fiber



**BB** bethany beige



**CO** coriander fiber



**WH** wheat fiber



**SU** sugar fiber



**RA** rock of ages

**laminate**  
chassis, front, top & edge



**6C** light cherry on cherry



**7C** medium cherry on cherry



**8C** dark cherry on cherry

**veneer**  
chassis, front, top & edge



**6C** light cherry on cherry



**7C** medium cherry on cherry



**8C** dark cherry on cherry





**trek**

**inwood**

OFFICE  
ENVIRONMENTS

800 786 6121  
812 482 6121 (voice)  
812 482 9732 (facsimile)

1108 east fifteenth street  
post office box 646  
jasper indiana 47547-0646

[www.inwood.net](http://www.inwood.net)

*Since 1948, Inwood has been a leading resource for the contract specifier. We are preserving the legacy of handcrafted quality, continual customer service and lasting value. Bringing smart engineering and real world design solutions to the workplace.*