

BABY DEVORO ROUND FRONT 10" ROUGH

2282.010

- Vitreous china
- Low-consumption (6.0 Lpf/1.6 gpf)
- Fully glazed 2" ballpass trapway
- 10" x 12" water surface area
- 10" high bowl
- 10" roughing-in
- Siphon flush action
- 2 bolt caps
- 1-1/2" top spud
- 100% factory flush tested

Nominal Dimensions:

Round Front: 603 x 318 x 254mm
(23-3/4" x 12-1/2" x 10")

Recommended working pressure--between
25 psi at valve when flushing and 80 psi
static

Fixture only, less seat and bolt caps

Compliance Certifications -

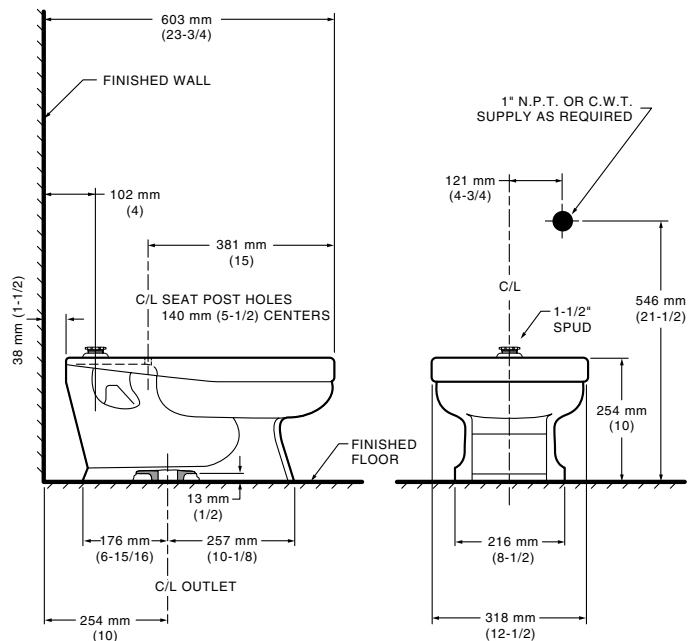
Meets or Exceeds the Following Specifications:

- ASME A112.19.2M (and 19.6M) for Vitreous China Fixtures - includes Flush Performance, Ball Pass Diameter, Trap Seal Depth and all Dimensions



To Be Specified

- Color: White Bone
- Seat: Olsonite #126-CC open front seat less cover
- Seat: Church #1580C open front seat less cover
- Alternate Seat:
- Flush Valve: Sloan Royal #111
- Alternate Flush Valve:



NOTES:

TO COMPLY WITH AREA CODE GOVERNING THE HEIGHT OF VACUUM BREAKER ON FLUSH VALVE, THE PLUMBER MUST VERIFY DIMENSIONS SHOWN FOR SUPPLY ROUGHING. FLUSH VALVE NOT INCLUDED AND MUST BE ORDERED SEPARATELY. THIS TOILET IS DESIGNED TO ROUGH-IN AT A MINIMUM DIMENSION OF 254MM (10") FROM FINISHED WALL TO C/L OF OUTLET.

IMPORTANT: Dimensions of fixtures are nominal and may vary within the range of tolerance established by ANSI Standard A112.19.2

These measurements are subject to change or cancellation. No responsibility is assumed for use of superseded or voided pages.