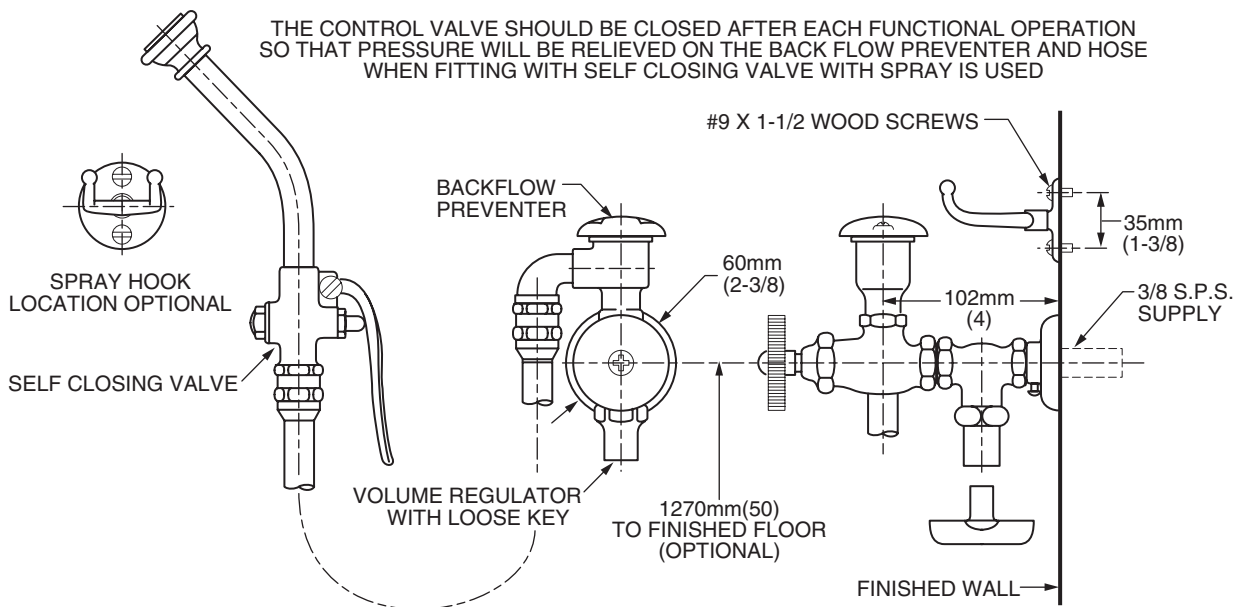


**MODEL NUMBER:**

- ☐ **7582.067 Bedpan Cleanser**  
Loose key volume regulator. Wheel handle.  
Vacuum breaker. Spray end.



**GENERAL DESCRIPTION:**

Cast brass volume control valve with renewable seat, built-in atmospheric vacuum breaker for back flow protection and loose key stop. Wall mounted. 3/8" NPT female inlet. 4' (1219mm) long rubber hose. 10" (254mm) long spray end with brass self-closing hand valve with renewable seats. Brass wall mounted spray hook.

**PRODUCT FEATURES:**

- Brass Construction:** Durable - excellent in high use applications.
- Brass Control Valve with Wheel Handle:** Volume control. Renewable seats.
- Built-in Vacuum Breaker and Loose Key Stop:** Prevents back flow.
- 10" Spray End:** Mounted at end of 4' rubber hose for easy reach away from supply nozzle.
- Self-Closing Hand Valve:** Simple operation. Turn water on/off with large brass lever. Renewable seats.
- Polished Chrome Finish:** Excellent in commercial applications.

**SUGGESTED SPECIFICATION**

Bedpan cleanser shall feature wall mounted brass single inlet volume control with loose key stop and vacuum breaker. Shall feature a 10" long spray end with brass self-closing hand valve, with renewable seats, at the end of 4' long rubber hose. Wall mounted brass spray hook. Fitting shall be American Standard Model# 7582.067.