

TOWN SQUARE® 6' x 42" WHIRLPOOL AND BATHING POOL

☐ **2742.018WC Whirlpool Massage System with EverClean™**

- Acrylic with fiberglass reinforcement
- Pre-leveled tub bottom
- Two person design with center drain and dual lumbar ends
- Dual, molded-in arm rests
- Dual, faucet/accessory deck areas
- 2.1 HP single speed, self-draining pump/motor
- Factory installed power cord with plug
- Eight multi-directional and flow adjustable jets
- Deck-mounted air switch On/Off
- Two silent air volume controls
- Quick Connect Safe-T-Heater connection system
- Factory installed and tested whirlpool system
- EverClean™ whirlpool system

☐ **2742.018WC.K2 Whirlpool Massage System with Chromatherapy**

Same as 2742.018WC but also includes:

- Two digitally controlled lights
- Electronic control with color selector and color cycle function

☐ **2742.002 Bathing Pool only**

Nominal Dimensions:

71-1/2" x 41-3/4" x 22"
(1816 x 1060 x 559mm)

Compliance Certifications -

Meets or Exceeds the Following Specifications:

- Underwriters Laboratories - Hydromassage Bathtubs UL 1795
- ASME A112.19.7M for Whirlpool Appliances
- ANSI Z124.1 for Plastic Bathtubs
- ASTM E162 for Flammability
- NFPA 258 for Smoke Density

The EverClean™ antimicrobial system incorporates AlphaSan®, a patented antimicrobial agent manufactured right into the circulation system components, which suppresses the growth of unsightly algae, fungus, mold and mildew.

SEE REVERSE FOR ROUGHING-IN DIMENSIONS AND PRODUCT SPECIFICATIONS

AlphaSan is a registered trademark of Milliken & Co.



To Be Specified - Required:

- ☐ Color:
- ☐ Drain 1594.170 (specify finish):
- ☐ Town Square Bath Faucet:
 - ☐ D/M Filler with Personal Shower: 2555.901 (specify finish)
 - ☐ D/M Filler less Personal Shower: 2555.900 (specify finish)
- ☐ Town Square Bath/Shower Faucet:
 - ☐ B/S for Wall Mount Spout: 2555.602 (specify finish)
 - ☐ B/S for Deck Mount Spout: 2555.652 (specify finish)
- ☐ Other Bath Faucet (specify finish):

To Be Specified - Optional:

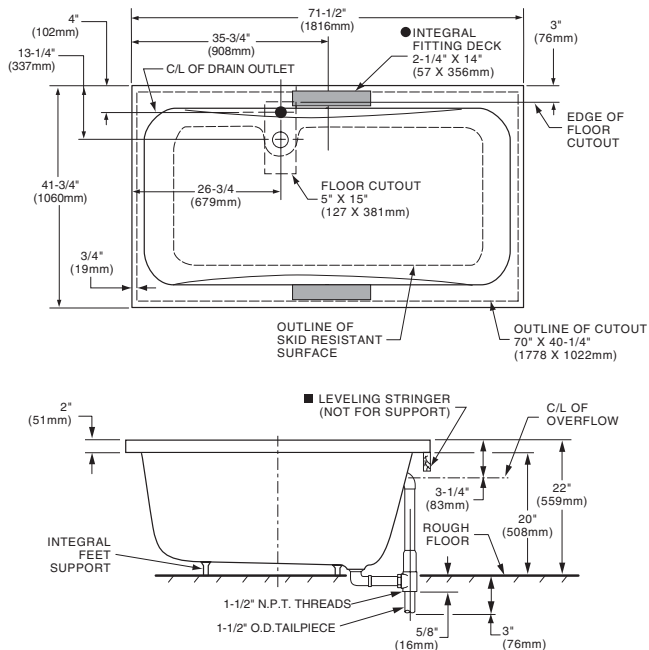
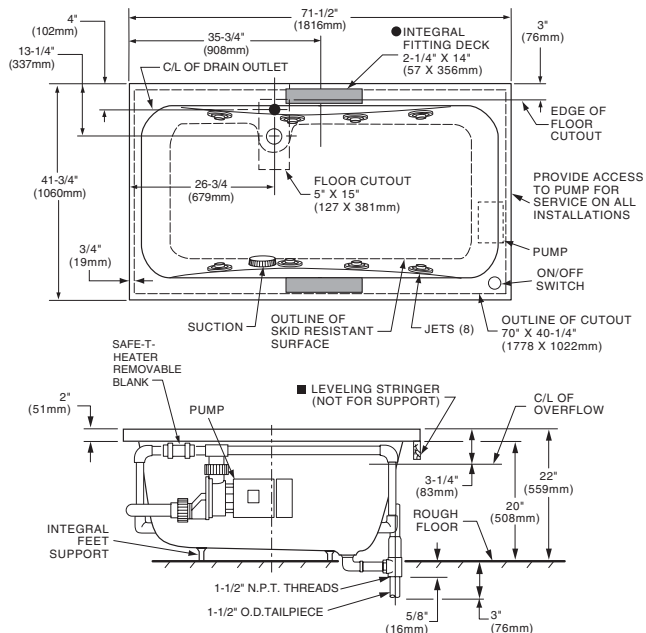
- ☐ Safe-T-Heater*: 9075.120

For color/finish availability and other faucet choices, please see the Product Selector and Pricing Guide.

* **NOTE:** the Safe-T-Heater is designed to maintain water temperature during operation. It will not heat cold water to desired bathing temperature.

TOWN SQUARE® 6' x 42" WHIRLPOOL AND BATHING POOL

HIGH GLOSS



GENERAL SPECIFICATIONS FOR 2742 WHIRLPOOL

INSTALLED SIZE	71-1/2 x 41-3/4 x 22 In. (1816 x 1060 x 559mm)
WEIGHT	115 Lbs. (52 Kg.)
WEIGHT w/WATER	690 Lbs. (313 Kg.)
GAL. TO OVERFLOW	69 Gal. (261 L)
WHIRLPOOL MIN. OPERATING VOL.	60 Gal. (227 L)
BATHING WELL AT SUMP	41 x 21-1/2 In. (1041 x 546mm)
BATHING WELL AT RIM	62 x 31-1/2 In. (1574 x 800mm)
WATER DEPTH TO OVERFLOW	14-1/4 In. (362mm)
FLOOR LOADING (PROJECTED AREA)	33 Lbs./Sq.Ft. (163 Kgs./Sq.m)
PTS.	27.8
CUBE (FT ³)	55.7

WHIRLPOOL ELECTRICAL SPECIFICATIONS

WHIRLPOOL PUMP	2.1 HP, 14.4 AMPS, 120V.
----------------	--------------------------

GENERAL SPECIFICATIONS FOR 2742 BATHING POOL

INSTALLED SIZE	71-1/2 x 41-3/4 x 22 In. (1816 x 1060 x 559mm)
WEIGHT	115 Lbs. (52 Kg.)
WEIGHT w/WATER	690 Lbs. (313 Kg.)
BATHING WELL AT SUMP	41 x 21-1/2 In. (1041 x 546mm)
BATHING WELL AT RIM	62 x 31-1/2 In. (1574 x 800mm)
WATER DEPTH TO OVERFLOW	14-1/4 In. (362mm)
FLOOR LOADING (PROJECTED AREA)	33 Lbs./Sq.Ft. (163 Kgs./Sq.m)
PTS.	27.8
CUBE (FT ³)	55.7

NOTES:

BATH CAN BE INSTALLED EITHER ABOVE OR BELOW FLOOR LINE AS PIER, ISLAND OR PENINSULA TYPE INSTALLATION. SUMP OF BATH IS SUPPORTED BY INTEGRAL FEET. NO ADDITIONAL SUPPORT REQUIRED. ENCLOSING MATERIALS BY OTHERS.

● IF INSTALLING A DECK-MOUNTED FITTING, BEFORE DRILLING ANY HOLES: CHECK FOR INTERFERENCE WITH CIRCULATING SYSTEM PIPING AND DRAIN OVERFLOW. MOUNTING HOLES DRILLED BY INSTALLER.

■ REFER TO INSTALLATION INSTRUCTIONS SUPPLIED WITH WHIRLPOOL FOR ADDITIONAL INFORMATION.

FITTINGS NOT INCLUDED AND MUST BE ORDERED SEPARATELY.

PROVIDE SUITABLE REINFORCEMENT FOR ALL SUPPORTS.

IMPORTANT: Dimensions of fixtures are nominal and may vary within the range of tolerances established by ANSI Standard Z124.1 / CSA Certified. These measurements are subject to change or cancellation. No responsibility is assumed for use of superseded or voided leaflet.