

DORAL CLASSIC CHAMPION® ROUND FRONT TOILET



 2076.016

- Vitreous china
- EverClean™ anti-microbial glaze (available Summer 2006)
- Low-consumption (6.0 Lpf/1.6 gpf)
- Features ***Champion® Flushing System*** performance platform
- 3" non-adjustable, flapper-free flush valve
- Round Front siphon action jetted bowl
- 2-3/8" fully-glazed trapway
- Speed Connect™ tank/bowl coupling system
- Chrome-plated trip lever
- Sweeping pier on bowl
- 100% factory flush tested
- 2 bolt caps
- 10 year warranty

 3110.016 Round Front Bowl

4281.016 Tank

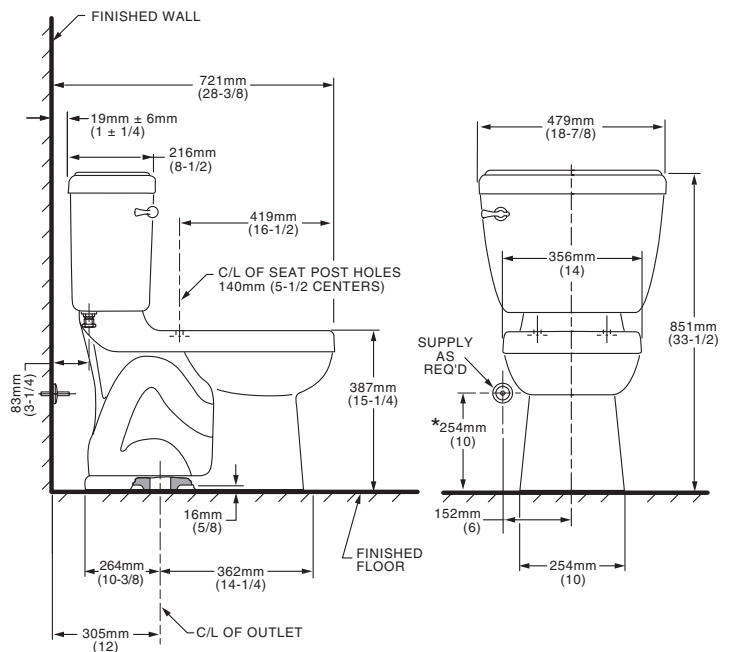
Nominal Dimensions:

721 x 479 x 851mm
(28-3/8" x 18-7/8" x 33-1/2")

Fixture only, seat and supply by others

**Compliance Certifications -
Meets or Exceeds the Following Specifications:**

- ASME A112.19.2M for Vitreous China Fixtures - includes Flush Performance, Ball Pass Diameter, Trap Seal Depth and all Dimensions
- Los Angeles Department of Water and Power Supplementary Purchase Specification for Non-Adjustability - July, 2003 revision



To Be Specified:

- ☐ Color:
 - ☐ White ☐ Bone ☐ Silver ☐ Linen ☐ Black
- ☐ Seat: (please specify color)
 - ☐ Champion® Slow Close Round Front #5330.010
 - ☐ Rise & Shine Round Front #5322.011
 - ☐ Laurel Round Front #5308.014
- ☐ Supply with stop:

NOTES:

THIS TOILET IS DESIGNED TO ROUGH-IN AT A MINIMUM DIMENSION OF 305MM (12") FROM FINISHED WALL TO C/L OF OUTLET.
SUPPLY NOT INCLUDED WITH FIXTURE AND MUST BE ORDERED SEPARATELY.

* DIMENSION SHOWN FOR LOCATION OF SUPPLY IS SUGGESTED.

IMPORTANT: Dimensions of fixtures are nominal and may vary within the range of tolerances established by ANSI Standard A112.19.2. These measurements are subject to change or cancellation. No responsibility is assumed for use of superseded or voided pages.

