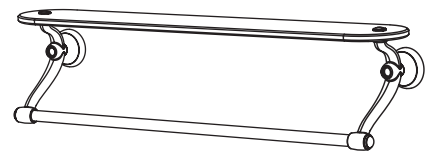


American Standard

STANDARD COLLECTION

24" TOWEL BAR & GLASS SHELF

Installation Instructions 6726



Thank you for selecting American-Standard...the benchmark of fine quality for over 100 years.

To ensure that your installation proceeds smoothly—please read these instructions carefully before you begin.

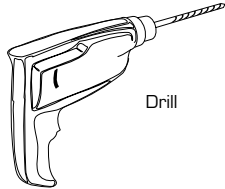
Certified to comply with ANSI A112.18.1
U.S. Patent No. D403,750

M968218B

Recommended Tools



Tape Measure



Drill



Regular Screwdriver



Phillips Screwdriver

CARE INSTRUCTIONS:

DO: SIMPLY RINSE THE PRODUCT CLEAN WITH CLEAR WATER. DRY WITH A SOFT COTTON FLANNEL CLOTH.

DO NOT: CLEAN THE PRODUCT WITH SOAPS, ACID, POLISH, ABRASIVES, HARSH CLEANERS, OR A CLOTH WITH A COARSE SURFACE.

1 24" TOWEL BAR & GLASS SHELF

- The 24" TOWEL BAR & GLASS SHELF (1) works best if secured to a wall stud or cross brace within the wall, using the SCREWS (3) supplied.
- If the 24" TOWEL BAR & GLASS SHELF (1) is to be installed on a tile or plaster wall the TILE ANCHORS (4) or DRYWALL ANCHORS(6) and SCREWS (3) should be used.
- Determine desired height and location (optional) and mark a center line. For the 24" TOWEL BAR (2) mark a centerline 24" horizontally from the first location. Using the MOUNTING PLATE (5) as a template mark the two spots for the mounting holes. Repeat for the other MOUNTING PLATE (5). If MOUNTING PLATE (5) is secured to a stud or cross brace drill small pilot holes for SCREWS (4).
- **For installations on drywall**, use DRYWALL ANCHORS (6) and SCREWS (3) for securing MOUNTING PLATE (5) to wall. Place #2 Phillips screwdriver or cordless screwdriver into recess of anchor. Press into drywall while turning the anchor clockwise until it is seated flush with the wall. Place MOUNTING PLATE (5) over DRYWALL ANCHORS (6) and insert SCREWS (3) with #2 Phillips screwdriver. See illustration below. Secure MOUNTING PLATE (5) to wall with SCREWS (3).
- **For installations on tiled walls**, If TILE ANCHORS (4) and SCREWS (3) are used for securing MOUNTING PLATE (5), then drill two 1/4" diameter holes a minimum of 1-1/4" deep. Insert the two TILE ANCHORS (4) flush with face of the finished wall. Secure MOUNTING PLATE (5) to wall with SCREWS (3).
- For the 24" TOWEL BAR & GLASS SHELF (1), Install TOWEL BAR (2) into bottom of SUPPORT POSTS (10, 10a). Align **slot** in towel bar with **notch** in recess of support post (10, 10a) (see **Figure A**). Install the WASHER (11), GLASS SHELF (15), WASHER (11) onto SUPPORT POSTS (10, 10a). Install and tighten SCREWS (13). See illustration.
- Install the WALL ESCUTCHEON (7) on the MOUNTING PLATES (5). Place 24" TOWEL BAR & GLASS SHELF (1) onto MOUNTING PLATES (5). Secure using SCREWS (14) and tighten.
- Push INDEX BUTTONS (9) into the SUPPORT POSTS (10, 10a). See illustration.

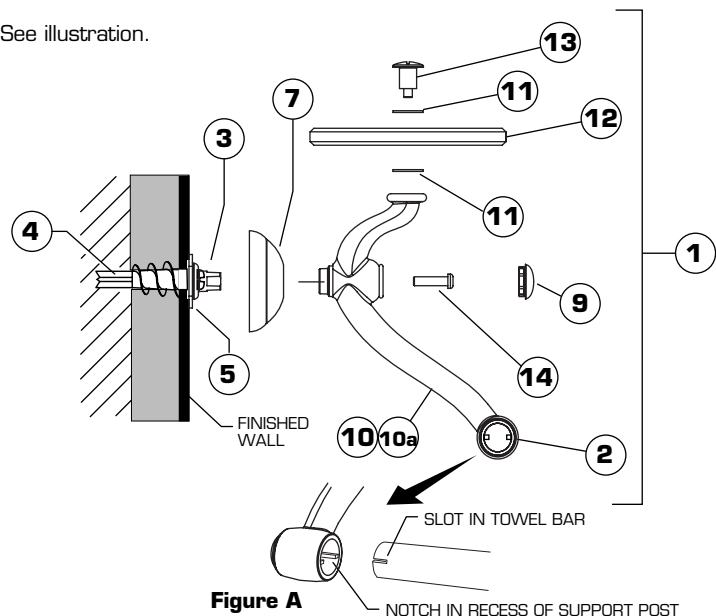
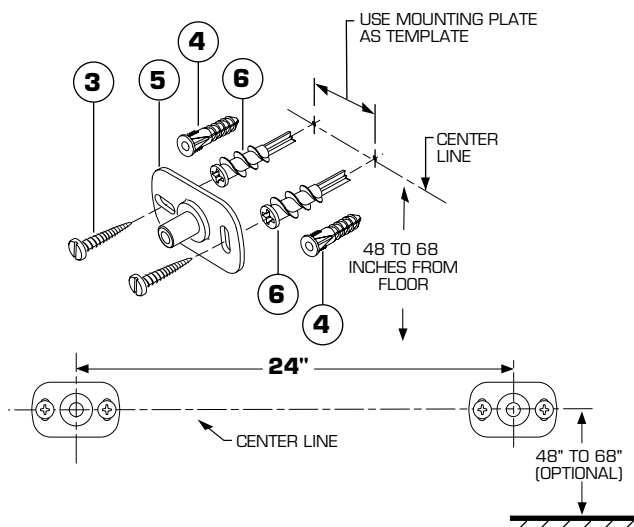


Figure A

American Standard

**STANDARD
COLLECTION**

ACCESSORIES

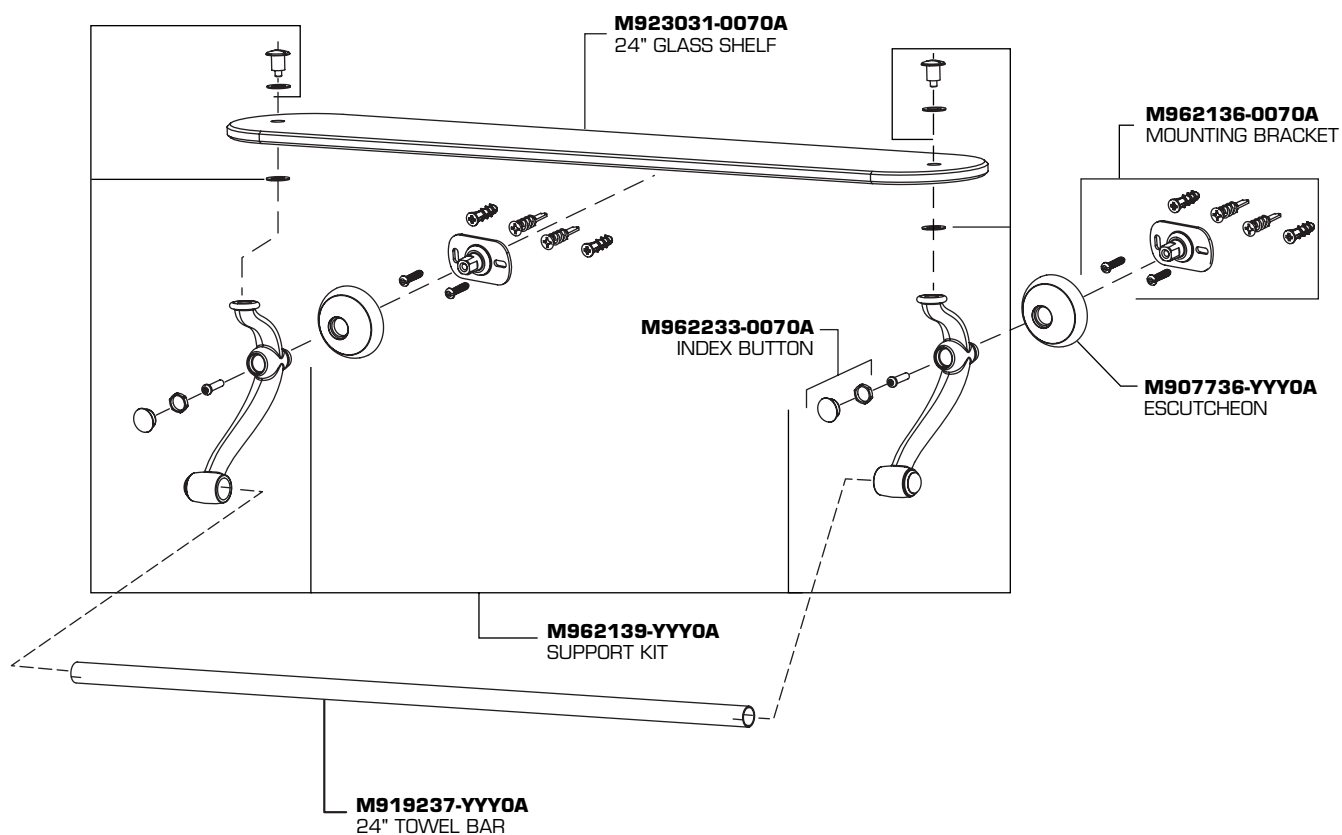
**24" TOWEL BAR
WITH GLASS SHELF**

MODEL NUMBERS

6726

6726

24" TOWEL BAR WITH GLASS SHELF



Replace the "YYY" with
appropriate finish code

CHROME	002
SATIN	295



HOT LINE FOR HELP

For toll-free information and answers to your questions, call:
1-800 442-1902
Weekdays 8:00 a.m. to 8:00 p.m. EST

IN CANADA 1-800-387-0369 (TORONTO 1-905-306-1093)
Weekdays 8:00 a.m. to 7:00 p.m. EST

Product names listed herein are trademarks of American Standard Inc.
© American Standard Inc. 2002

M968218B