

**COLONY OVAL™ COUNTERTOP SINK**

- Acid-resisting enamel steel
- Front overflow
- Self-rimming with cutout template supplied
- Two soap depressions
- Mounting clamps supplied

❑ **3004.207** Faucet holes on 4" (102mm) centers

**Nominal Dimensions:**

508 x 432mm  
(20" x 17")

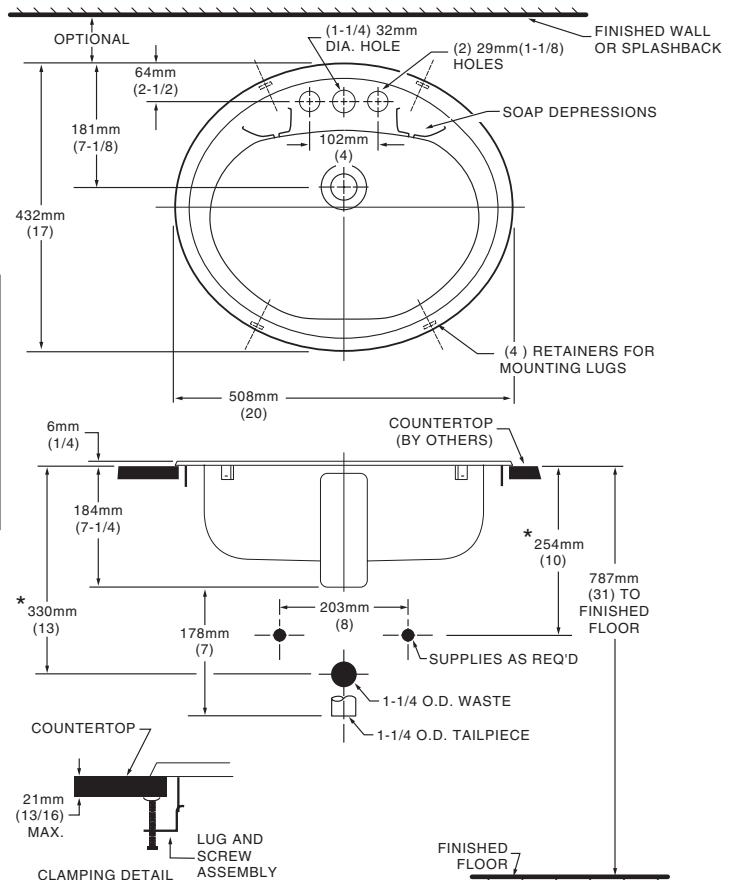
**Bowl sizes:**

381mm (15") wide  
279mm (11") front to back  
152mm (6") deep

**Compliance Certifications -**

**Meets or Exceeds the Following Specifications:**

- ASME A112.19.4M for Enameled Steel Plumbing Fixtures



**To Be Specified:**

- ❑ Color:
  - ❑ White
  - ❑ Bone
  - ❑ Silver
  - ❑ Shell
  - ❑ Linen
- ❑ Faucet\*:
- ❑ Faucet Finish:
- ❑ Supplies:
- ❑ 1-1/4" Trap:

\* See faucet section for additional models available

**NOTES:**  
\* DIMENSIONS SHOWN FOR LOCATION OF SUPPLIES AND "P" TRAP ARE SUGGESTED. FOR COUNTERTOP CUTOUT AND INSTALLATION INSTRUCTIONS USE TEMPLATE SUPPLIED WITH SINK. FITTINGS NOT INCLUDED WITH FIXTURE AND MUST BE ORDERED SEPARATELY.

**IMPORTANT:** Dimensions of fixtures are nominal and may vary within the range of tolerances established by ANSI Standard A112.19.4. These measurements are subject to change or cancellation. No responsibility is assumed for use of superseded or voided pages.