



OVALYN™ UNDERCOUNTER SINK

- Classic oval undermount sink
- Made from vitreous china
- Unglazed rim for undercounter mount
- Front overflow
- Supplied with mounting kit (047194-0070A) and template

0495.221 Unglazed rim

435 x 359mm
(17-1/8" x 14-1/8")

0495.300 Glazed underside

Bowl size:

382mm (15-1/16") wide
306mm (12-1/16") front to back
140mm (5-1/2") deep

0496.221 Unglazed rim

489 x 413mm
(19-1/4" x 16-1/4")

0496.300 Glazed underside

Bowl size:

432mm (17") wide
356mm (14") front to back
140mm (5-1/2") deep

0497.221 Unglazed rim

546 x 441mm
(21-1/2" x 17-3/8")

0497.300 Glazed underside

Bowl size:

483mm (19") wide
391mm (15-3/8") front to back
140mm (5-1/2") deep

**Compliance Certifications -
Meets or Exceeds the Following Specifications:**

- ASME A112.19.2M for Vitreous China Fixtures
- CAN/CSA B45 series

To Be Specified:

- Color:
- Faucet*:
- Faucet Finish:
- Supplies:
- 1-1/4" Trap:

* See faucet section for additional models available



SEE REVERSE FOR ROUGHING-IN DIMENSIONS

 **BARRIER FREE**

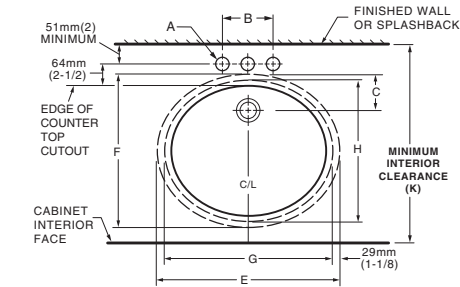
0496/0497

NOTES:

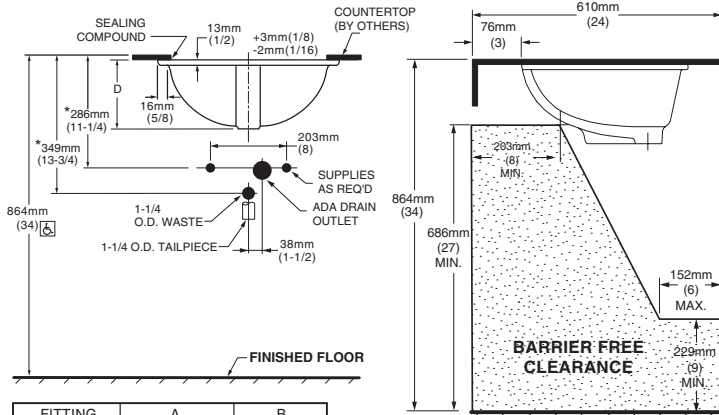
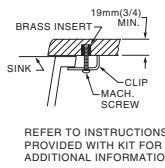
* DIMENSIONS SHOWN FOR LOCATION OF SUPPLIED AND "P" TRAP ARE SUGGESTED.

▼ UNDERCOUNTER MOUNTING KIT SUPPLIED WITH SINK. PLEASE NOTE MINIMUM INTERIOR CLEARANCE DIMENSION (K). FITTINGS NOT INCLUDED AND MUST BE ORDERED SEPARATELY. USE ENCLOSED TEMPLATE FOR COUNTERTOP CUTOUT SEALING COMPOUND SUPPLIED BY OTHERS.

IMPORTANT: Dimensions of fixtures are nominal and may vary within the range of tolerances established by ANSI Standard A112.19.2. These measurements are subject to change or cancellation. No responsibility is assumed for use of superseded or voided pages.



▼ DETAIL OF MOUNTING CLIP (KIT No. 047194-0070A)



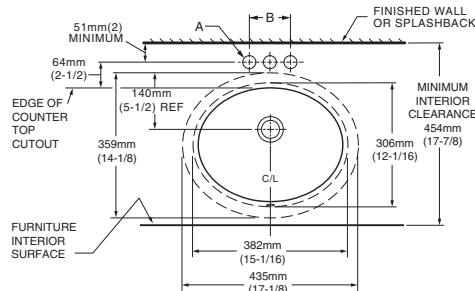
MEETS THE AMERICANS WITH DISABILITIES ACT GUIDELINES AND ANSI A117.1 ACCESSIBLE AND USEABLE BUILDINGS AND FACILITIES - CHECK LOCAL CODES.

Countertop 864mm (34") from finished floor. Lavatory installed 76mm (3") from front edge of countertop. Countertop thickness to be 25mm (1") maximum.

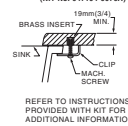
| FITTING | A | B |
|-----------|--------------|-----------|
| CENTERSET | 1-1/4 (32mm) | 4 (102mm) |
| SPREAD | 1-3/8 (35mm) | 8 (203mm) |

| CAT. NO. | E | F | G | H | C | D | J | K |
|----------|----------------|----------------|------------|----------------|----------------|----------------|------------|------------------|
| 0496.221 | 489mm (19-1/4) | 413mm (16-1/4) | 432mm (17) | 356mm (14) | 103mm (4-1/16) | 182mm (7-3/16) | 16mm (5/8) | 500mm (19-11/16) |
| 0497.221 | 546mm (21-1/2) | 441mm (17-3/8) | 483mm (19) | 391mm (15-3/8) | 95mm (3-3/4) | 191mm (7-1/2) | 19mm (3/4) | 534mm (21-1/16) |

0495



▼ DETAIL OF MOUNTING CLIP (KIT No. 047194-0070A)



| FITTING | A | B |
|-----------|--------------|-----------|
| CENTERSET | 1-1/4 (32mm) | 4 (102mm) |
| SPREAD | 1-3/8 (35mm) | 8 (203mm) |

NOTES:

USE ENCLOSED TEMPLATE FOR COUNTERTOP CUTOUT. FITTINGS NOT INCLUDED WITH FIXTURE AND MUST BE ORDERED SEPARATELY.

* DIMENSIONS SHOWN FOR LOCATION OF SUPPLIED AND "P" TRAP ARE SUGGESTED.

▼ UNDERCOUNTER MOUNTING KIT SUPPLIED WITH SINK. PLEASE NOTE MINIMUM INTERIOR CLEARANCE DIMENSION (K). SEALING COMPOUND SUPPLIED BY OTHERS.

IMPORTANT: Dimensions of fixtures are nominal and may vary within the range of tolerances established by ANSI Standard A112.19.2. These measurements are subject to change or cancellation. No responsibility is assumed for use of superseded or voided pages



MEETS THE AMERICANS WITH DISABILITIES ACT GUIDELINES AND ANSI A117.1 ACCESSIBLE AND USEABLE BUILDINGS AND FACILITIES - CHECK LOCAL CODES.

Countertop 864mm (34") from finished floor. Lavatory installed 51mm (2") from front edge of countertop. Countertop thickness to be 25mm (1") maximum.

