

# TOTO®

## TL960DDC Soirée™ Widespread Lavatory Faucet



TL960DDC - Soirée™ Widespread Lavatory Faucet

### LifeKoat™

TOTO® uses a state-of-the-art plating process, called LifeKoat™, that gives our bath fittings and accessories durability. The LifeKoat™ ionic plating procedure covers the entire fitting with a special finish that:

- Prevents corrosion
- Improves scratch resistance
- Increases hardness

- Clean, elegant design to complement the Soirée™ design Suite
- Durable finishes and materials
- Brass valve bodies
- 1/4 turn washerless ceramic disk valve cartridge for drip-free performance
- Flexible hose connection for 8" to 16" spread installations
- Pop-up drain

Decorative widespread lavatory faucet to match the Soirée™ design Suite. 2.2 gpm (8.3 lpm) maximum flow rate (Per regulation).

### ■ TL960DDC

Soirée™ widespread lavatory faucet, polished chrome finish.

### □ TL960ddb

Soirée™ widespread lavatory faucet, LifeKoat™ polished brass finish.

### □ TL960DDN

Soirée™ widespread lavatory faucet, LifeKoat™ brushed nickel finish.

### □ TL960DDP

Soirée™ widespread lavatory faucet, LifeKoat™ polished nickel finish.  
(Available 2Q 2006)



### Finishes:

Standard	Polished Chrome
Optional	LifeKoat™ Polished Brass
	LifeKoat™ Brushed Nickel
	LifeKoat™ Polished Nickel

See Price Book for additional information

## Soirée™ Widespread Lavatory Faucet

## ■ DESIGN

Designed to match the Soirée™ Suite of fixtures and fittings, Soirée™ faucets can complement any distinctive bath suite. Made from cast brass with washerless ceramic disk valve cartridges, these faucets are durable and offer drip-free performance.

## SPECIFICATIONS

Flow Rate:	2.2 gpm (8.3 lpm) maximum flow rate
Warranty:	Lifetime Limited Warranty (Residential use) One Year (Commercial use)
Material:	Cast Brass

Shipping Weight:	<b>Individual</b>	8.5 lbs.
	<b>Case (Qty 3)</b>	25.5 lbs.

Shipping Dimensions: **Individual**  
20-1/2"L x 9-3/4"W  
x 3-1/2"H

**Case (Qty 3)**  
21-1/4"L x 10-1/2"W  
x 11-1/4"H

## ■ CODES/STANDARDS

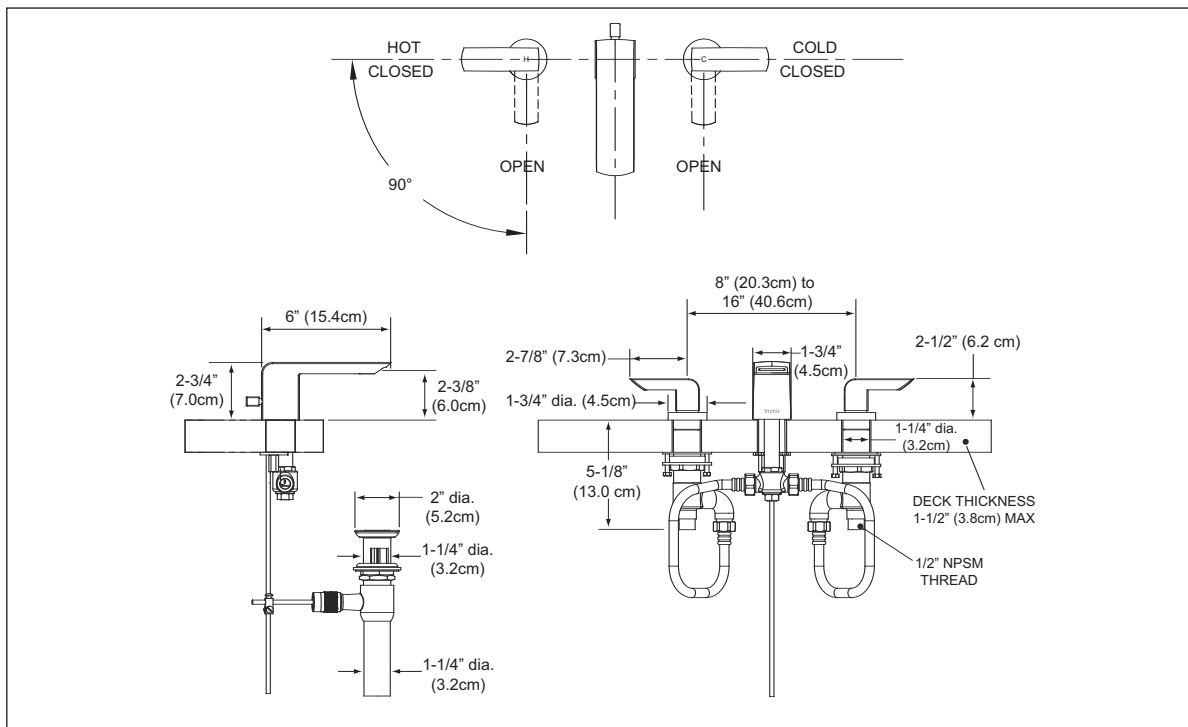
*Complies with and exceeds the following standards:*  
*ASME A112.18.1M / CSA B125-2005*  
*NSF 61*

*Listed by:*  
*IAPMO / C-UPC, NSF and other municipalities*



 *Meets the American Disabilities Act Guidelines and ANSI A117.1*

*These dimensions and specifications are subject to change without notice.*



**TL960DDC - Soirée™ Widespread Lavatory Faucet**

**TOTO®**

TOTO® U.S.A., INC. • 1155 Southern Road, Morrow, GA 30260  
Tel. (888) 295-8134 • Fax. (800) 699-4889 • [www.totousa.com](http://www.totousa.com)

Printed in U.S.A. © TOTO® LTD. 01/06 #

Printed on recycled paper 