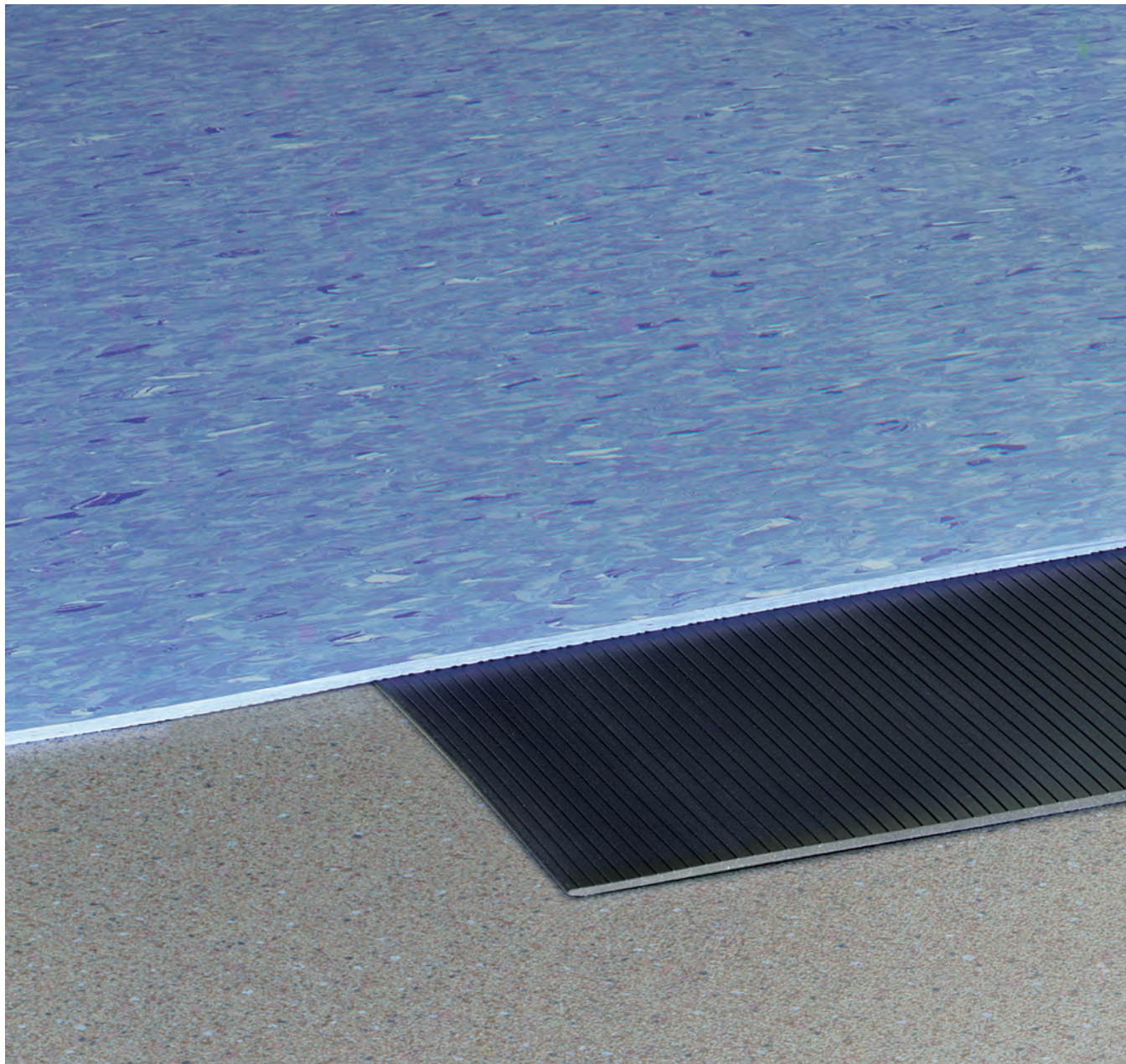


SUBFLOOR LEVELER SYSTEM

SUBFLOOR LEVELER SYSTEM COMPONENTS (BLACK ONLY)

<p>LS-40-F 4' pieces Reduces 1/8" to 0"</p>	
<p>LS-40 4' pieces Reduces 1/4" to 0". Can be cut at score line to reduce height as indicated.</p>	
<p>LS-40-K 4' pieces Reduces 1/4" to 0". Leveled edge for tack strip installation.</p>	
<p>LS-40-D 4' pieces Reduces 3/8" to 0". Can be cut at score line to reduce height as indicated.</p>	
<p>LS-40-E 4' pieces Reduces 1/2" to 0". Can be cut at score line to reduce height as indicated.</p>	
<p>LS-40-G 4' pieces Reduces 3/4" to 0"</p>	
<p>LS-40-B 4' pieces Reduces 3/8" to 1/4". Can be used alone or with LS-40 to extend transition.</p>	
<p>LS-40-C 4' pieces Reduces 1/2" to 3/8". Can be used alone or with LS-40-D or LS-40-B to extend transition.</p>	

SUBFLOOR LEVELER SYSTEM



SubFloor Leveler System **U.S. Patent No. 7,174,682 Quick Fix**

We've practically eliminated the need for traditional floor levelers—and the labor and curing time they require. Our patented SubFloor Leveler System provides a gradual ramp between different flooring elevations, creating a smooth transition and fewer trips and falls. With easy installation and the ability to lay flooring immediately over top, it keeps everything moving swiftly—from your project to your foot traffic.