

Plains Tile

Product Type	Carpet Tile
Collection	Shifting Fields
Style Number	5T374
Construction	Multi-Level Pattern Loop
Fiber	Ecosolution Q100® Nylon
Dye Method	100% Solution Dyed
Primary Backing	Synthetic
Secondary Backing	Ecoworx® Tile
Protective Treatments	SSP® Shaw Soil Protection
Recommended Adhesive	LokDots, 3000 Carpet Tile 4 Gallon, 3000 Carpet Tile 1 Gallon, 4151 Multi-Use Carpet Tile 4 Gallon, 5000 Carpet Tile 1 Gallon, LokWorx Adhesive Tabs, 3800 Indoor Outdoor Carpet Tile 4 Gallon or 5000 Carpet Tile 4 Gallon

	u.s.	metric
Product Size	18 in x 36 in	46 cm x 91 cm
Area per Carton	45 ft²	4.18 m²
Pieces per Carton	10 pcs	
Gauge	1/10 in	39.4 per 10 cm
Stitches	8.0 per in	31.5 per 10 cm
Finished Pile Thickness	0.112 in	2.84 mm
Average Density	7071 oz/yd³	0.262 g/cm³
Total Thickness	0.282 in	7.16 mm
Tufted Weight	22 oz/yd²	745.9 g/m²



Recommended Installation Method

Ashlar

Brick

Herringbone

Monolithic

Basketweave

Half Basketweave

Boxed In

When installing Landing Edge Tile with Enclave Tile or Plains Tile, shade variation may be apparent resulting in visual color changes between styles. This can be more apparent in long corridor installations.

Performance + Testing

Radiant Panel	Class I
NBS Smoke	Less Than 450
Electrostatic Propensity	Less Than 3.5 kv
CRI Green Label Plus (GLP)	GLP9968
Pill Test	Pass*
ADA Compliance	>0.6, meets the recommended static coefficient of friction for ADA walking surfaces and accessible routes***

Test Reports may be included or listed by the manufacturing/inventory style number as opposed to the noted selling style number.

Warranties

Lifetime Commercial Limited Warranty

Coordinating Products

Carpet Tile: **Enclave Tile, Landing Tile, Landing Edge Tile, Vista Tile, Clearing Tile**

Diversity & Inclusion

We believe all humans are equal. Individually and collectively, we need to proactively create and promote opportunities that give everybody an equal footing in life. We nurture an environment where every voice and perspective can be heard, and proactively promote accessibility and inclusivity inside our network and beyond. One proof point is our ability to meet the criteria of the Social Fairness pillar of the Cradle to Cradle Product Standard. At Shaw Industries, we promote supplier participation that is reflective of Shaw's diverse customer base and local community. More than 42% of our spend\*\*\*\*\* is with small and diverse businesses. We believe having a strong Supplier Diversity Program is strategic for bringing more innovation to our businesses and opening new markets for growth.

Material Health & Environmental Certifications

Certifications below apply exclusively to the carpet tile rug itself and not the LokWorx Tabs adhesive

Health & Wellbeing

Material Ingredient Transparency

**Cradle to Cradle Certified® | Silver Level (Version 4.0)**  
**Health Product Declaration (HPD) | 1,000 ppm Disclosure**  
**Living Building Challenge (LBC) | Free of Red List Chemicals**  
**Declare | LBC Compliant**  
**NSF 140 | Gold**

Indoor Air Quality

**CRI Green Label Plus (GLP) | GLP9968**

Climate Impact

Environmental Product Declaration (EPD)

**3rd Party Certified in Accordance with ISO14044, ISO14025 & EN15804**

Embodied Carbon (Cradle to Gate)

**3.79 kg CO<sub>2</sub>/m<sup>2</sup>**

Life-Cycle Carbon Emissions

**Carbon Neutral**

Total Recycled Content

**58% (Pre-Consumer 58% | Post-Consumer 0%)**

Product Packaging

**100% Recyclable**

Global Product Assessment

**CE Marking (EN 14041) | 3rd Party Certified**  
**Environmental Guarantee\* | Re[turn] Reclamation Program\* | Through Our Environmental Guarantee, Shaw Pledges to Transport And Recycle Any Ecoworx Carpet.**  
**Country of Origin\*\* | USA**

WELL V2 Contribution Credit

X08 Hazardous Material Reduction

**C2C Silver Level (Version 4.0)**

Part 1: Limit Hazardous Materials Optimization

X10 Volatile Compound Reduction

**C2C Silver Level (Version 4.0)**

Part 1 (A): Manage Volatile Organic Compounds (VOCs) Optimization

X11 Long Term Emissions Control

**Green Label Plus Certification: GLP9968**

Part 2: Flooring Optimization

X13 Enhanced Material Precaution

**C2C Silver Level (Version 4.0)**

Part 1: Select Optimized Materials Optimization

X14 Material Transparency

**C2C Silver Level (Version 4.0)**

Part 1: Promote Ingredient Disclosure Optimization

## Leed v4 Contribution Credits

MR Credit: Building Product Disclosure and Optimization  
Environmental Product Declarations - Option 1: Environmental Product Declaration (EPD)

MR Credit: Building Product Disclosure and Optimization  
Material Ingredients - Option 1: Material Ingredient Reporting

MR Credit: Building Product Disclosure and Optimization  
Material Ingredients - Option 2: Material Ingredient Optimization

MR Credit: Building Product Disclosure and Optimization  
Sourcing of Raw Materials - Option 2: Leadership Extraction Practices

EQ Credit: Low Emitting Materials  
Option 1: Product Category Calculations

MR Credit: Interiors Life-Cycle Impact Reduction  
Option 3: Design for Flexibility

**3rd Party Certified in Accordance with ISO 14044, ISO 14025 & EN15804**

**C2C Silver Level (Version 4.0) or HPD (Version 2.1)**

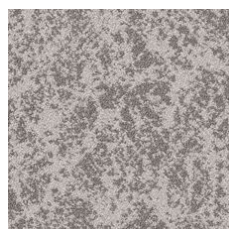
**C2C Silver Level (Version 4.0)**

**Environmental Guarantee: Re[turn] Reclamation Program\* | Through Our Environmental Guarantee, Shaw Pledges to Transport And Recycle Any Ecoworx Carpet.**

**Green Label Plus Certification: GLP9968**

**Ecoworx Tile with Lokdots Installation System**

## Available Colorways



Brilliant 71105  
LRV 29.9 | L\* 61.58



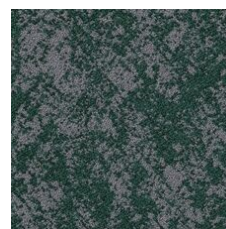
Earth 71225  
LRV 12.5 | L\* 41.99



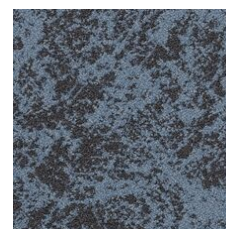
Coast 71323  
LRV 7 | L\* 31.71



Meadow 71375  
LRV 7.4 | L\* 32.72



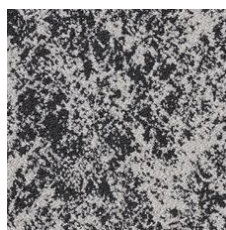
Forest 71396  
LRV 8.2 | L\* 34.45



Sky 71411  
LRV 11.7 | L\* 40.74



Reservoir 71485  
LRV 5.4 | L\* 27.93



Birch 71500  
LRV 21 | L\* 52.97



Distant 71505  
LRV 7.7 | L\* 33.4



Pristine 71535  
LRV 21 | L\* 52.92



Opulent 71555  
LRV 13.3 | L\* 43.14



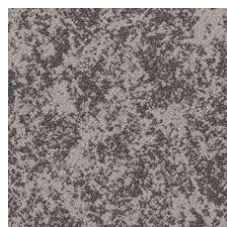
Remote 71580  
LRV 16.5 | L\* 47.6



Plateau 71585  
LRV 5.4 | L\* 27.8



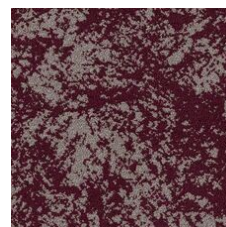
Stone 71595  
LRV 9.3 | L\* 36.65



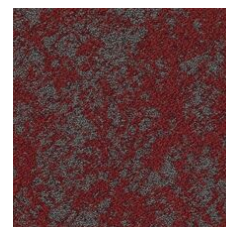
Expansive 71760  
LRV 20.1 | L\* 51.95



Summit 71761  
LRV 11.1 | L\* 39.78



Flora 71850  
LRV 7.2 | L\* 32.19



Reef 71870  
LRV 7.7 | L\* 33.41

## Additional Information

\* To learn more about the recyclability of our products and our re[TURN], please visit [shawcontract.com/sustainability](https://shawcontract.com/sustainability).

\*\*Meets or exceeds all local and national regulations in country of manufacture.

\*\*\*This carpet is manufactured to be ADA compliant, but to be fully ADA compliant, the end-user must ensure the carpet is adhered to the floor and installed as outlined in the ADA standards.

[Installation Guidelines](#)

[Maintenance Guidelines](#)

Specifications are subject to nominal manufacturing variance. Material supply and/or manufacturing processes may necessitate changes without notice.

This product is an exclusive design and may not be duplicated in any manner. Use of this design in the creation of another product design is also strictly prohibited.

Visit [shawcontract.com/testing](https://shawcontract.com/testing) for more information.



**Declare.**



**PVC-Free**

Corporate Headquarters +1 800 257 7429 | +1 706 532 7984 | **Atlanta** +1 404 853 7429 | **Bengaluru** +91 80 6773 0202 | **Beijing** +86 10 6568 588 | **Chicago** +1 312 467 1331 | **Dubai** +971 4 584 6956 | **Hong Kong** +852 2623 0371 | **Latin America (Miami)** +1 305 827 5912 | **London** +44 207 961 4120 | **Los Angeles** +1 800 233 1614 | **Melbourne** +61 3 9939 8543 | **Mexico City** +55 5010 7600 | **Mumbai** +91 22 6284 5050 | **Nantong** +86 400 800 7429 | **New York** +1 212 953 7429 | **Paris** +33 (0) 1 81 22 44 39 | **San Francisco** +1 415 955 1920 | **Santiago** +562 2431 5000 x 550 | **São Paulo** +55 11 3071 1702 | **Shanghai** +86 21 3338 4000 | **Singapore** +65 6733 1811 | **Sydney** +61 800 556 302