

# OORT

Francesco Rota | 2017



# OORT

Francesco Rota | 2017

Minimalist with its simple geometric shapes, contemporary in its choice of tone-on-tone or contrasting colours, OORT cushions are the ideal complement to every chair and sofa. Its softness, also ideal for lumbar support, invites you to take a break. And thanks to its special fibre interior, the cushions always spring back to their original state of initial contact.

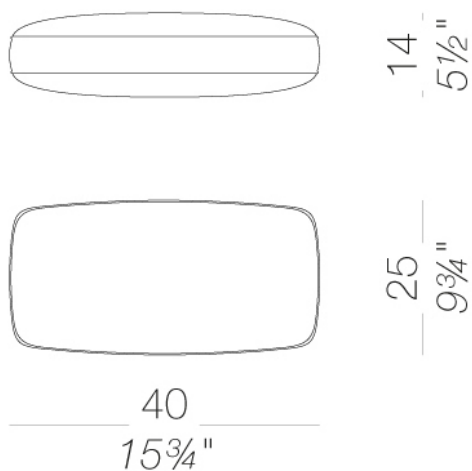


# OORT

Francesco Rota | 2017

## | Lower back cushion removable cover 40x25

Cushions in microfiber of hypoallergenic polyester with removable fabric in several dimensions.

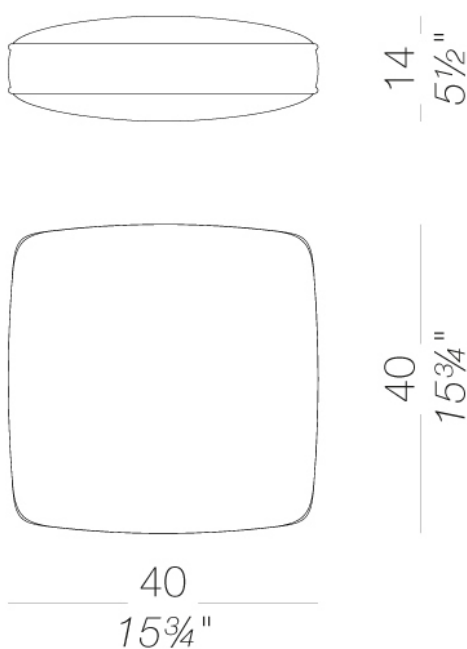


# OORT

Francesco Rota | 2017

## | Square cushion removable cover 40x40

Cushions in microfiber of hypoallergenic and water repellent polyester with removable fabric in several dimensions

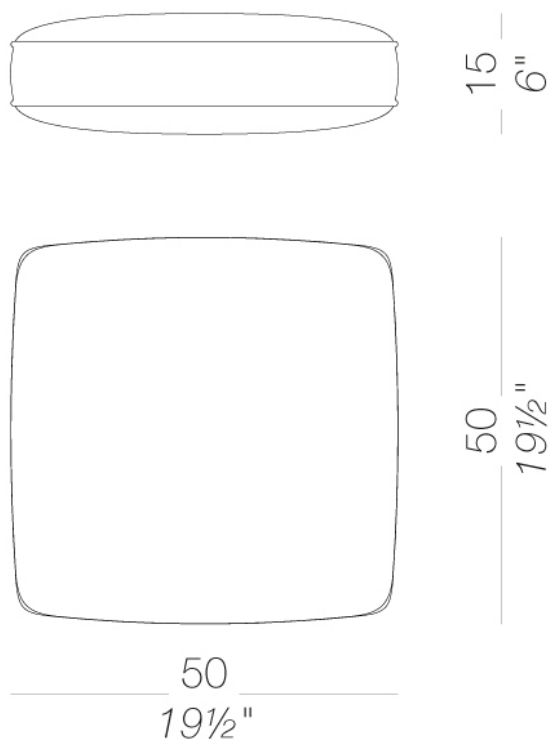


# OORT

Francesco Rota | 2017

## | Square cushion removable cover 50x50

Cushions in microfiber of hypoallergenic and water repellent polyester with removable fabric in several dimensions

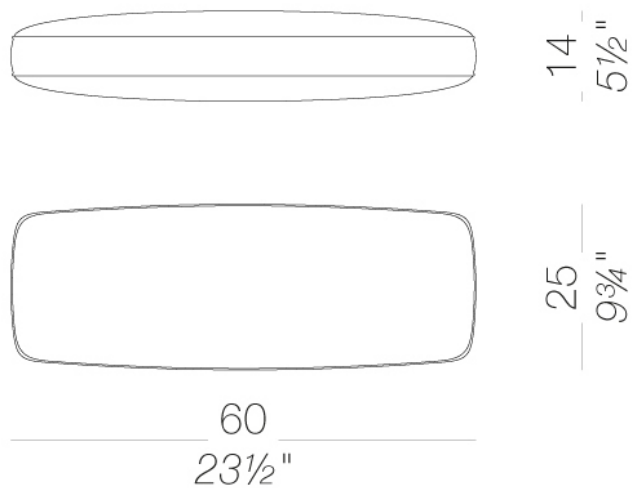


# OORT

Francesco Rota | 2017

## | Lower back cushion removable cover 60x25

Cushions in microfiber of hypoallergenic polyester with removable fabric in several dimensions.

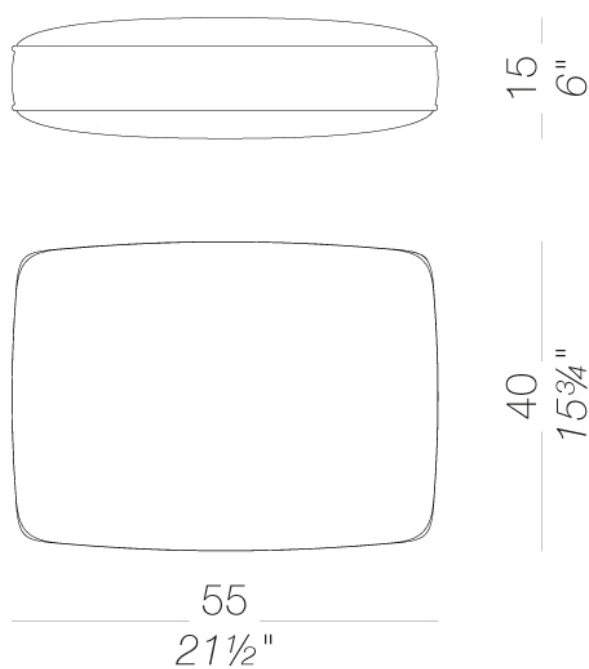


# OORT

Francesco Rota | 2017

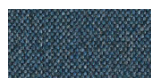
## | Rectangular cushion removable cover 55x40

Cushions in microfiber of hypoallergenic and water repellent polyester with removable fabric in several dimensions





## upholstery



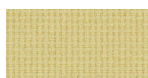
fabric  
Main Line Flax -  
Grade. B  
57 Colors



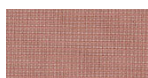
fabric  
Chili - Grade. A  
47 Colors



fabric  
Umber - Grade. B  
36 Colors



fabric  
Nobel - Grade. C  
30 Colors



fabric  
Naveli - Grade. C  
24 Colors



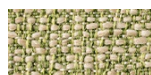
fabric  
Fiocco - Grade. B  
34 Colors



fabric  
Atrium - Grade. C  
16 Colors



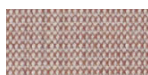
fabric  
Panama - Grade. A  
48 Colors



fabric  
Sorrento - Grade. B  
22 Colors



fabric  
Hallingdal 65 -  
Grade C  
58 Colors



fabric  
Canvas 2 - Grade C  
45 Colors



fabric  
Steelcut Trio 3 -  
Grade D  
54 Colors



fabric  
Remix 3 - Grade C  
72 Colors



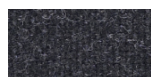
fabric  
Fiord 2 - Grade C  
39 Colors



fabric  
Divina MD - Grade  
D  
27 Colors



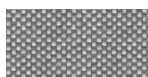
fabric  
Divina Melange 3 -  
Grade D  
38 Colors



fabric  
Tonica 2 - Grade C  
39 Colors



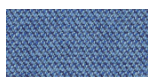
fabric  
Medley - Grade A  
37 Colors



fabric  
Maya - Grade A  
43 Colors



fabric  
Jet - Grade A  
66 Colors



fabric  
Capture - Grade B  
43 Colors



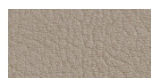
fabric  
Crisp - Grade B  
40 Colors



fabric  
Iris - Grade B  
24 Colors



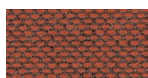
fabric  
Steelcut 3 - Grade D  
40 Colors



ecoleather  
Valencia - Grade B  
66 Colors



fabric  
Grain - Grade. B  
50 Colors



fabric  
Re-wool - Grade C  
21 Colors

**consult the portfolio for the range of colors, fabrics, eco-leather, soft-leather.**

## use and maintenance instructions

Clean all parts in wood, leather, fabric and metal with a damp cloth or a diluted neutral cleaner. Do not use cleaners with alcohol, bleach, solvent or abrasive products. Any liquid spilt on the product must be wiped up immediately. When lifting or moving the product, hold it on the structure and not under the seat. The product should not be subjected to unbalanced weights, as it is designed for a proper rest on the foothold (on four legs or on the base). Our company relieves from any responsibility in case of damage caused to fragile floors. Avoid any improper use of the product: do not step on the product, on the footrest or on the armrests. Avoid any movements that could compromise the proper functionality of the product or the safety of the users. Wood and leather, being natural materials, could be easily damaged. Small impurities or imperfections are within quality standard range. Do not expose the product to weather conditions or atmospheric agents, nor to heat sources over 40°C. Also products for outdoor use could be afflicted by atmospheric agents. The product could undergo possible exterior changes due to particular exposure to heat, humidity and saltiness. An appropriate and frequent maintenance and cleaning of the product enhances its durability. The product could change colour and shade, if exposed to direct sunlight. Maintenance has to be carried out by experienced staff. Dispose of the package only after assembling the product, in order to avoid the loss of ironmongery and components. Once the product has been dismantled, the product itself or its components must be given to the public garbage disposal system, according to the legislation in force.