

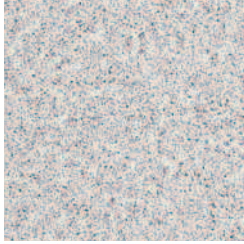
color **palette**



wright · line

technical environment solutions

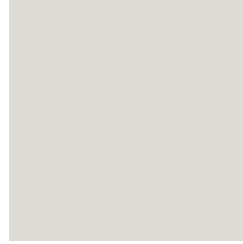
laminates



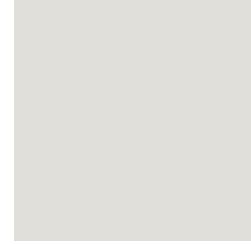
WHITE MATRIX (K)



CHARCOAL MATRIX (G)



FOLKSTONE GREY (L)



ESD GREY (E)



AMERICAN CHERRY (A)



NATURAL GRANITE (N)



OAK (D)



SILVER (V)



MAPLE (Y)

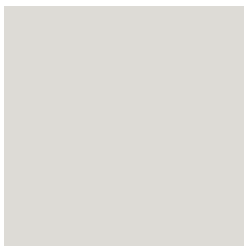


LODESTONE (H)

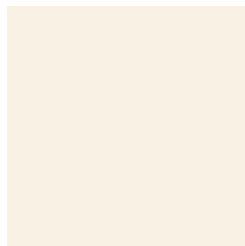


WARM BROWN II (R)

steel



NUGREY (F)



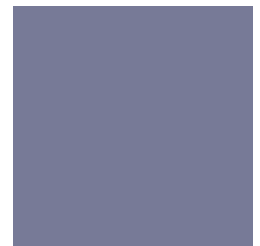
CREME WHITE (C)



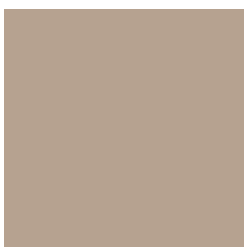
BLACK (M)



TITANIUM (V)



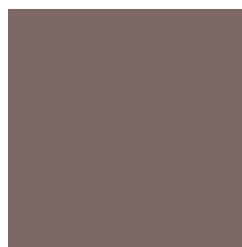
METAL GREY (H)



WARM BROWN II (R)



STEEL BLUE (L)



TAUPE (T)



WINE (W)



BRONZE TAUPE (D)

product lines

furniture matrix

	LINX	Optimedia (Sidewinder)	Optimedia (Classic)	Profile	NetView/ Horizon	Foundations/ LMS *	TechCart	TechBench	Filing Companions	TechOrganizer
LAMINATE	White Matrix (K)	●	●	●	●	●	●	●		
	Charcoal Matrix (G)	●	●	●	●	●	●	●		
	Folkstone Grey (L)	●	●	●	●		●	●		
	ESD Grey (E)	●				●	●	●		
	American Cherry (A)	●	●	●	●		●	●		
	Natural Granite (N)	●	●	●			●			
	Oak (D)	●	●	●			●	●		
	Silver (V)	●	●	●	●		●	●		
	Maple (Y)	●	●	●	●		●	●		
	Lodestone (H)	●	●	●	●		●	●		
	Warm Brown II (R)	●	●	●			●	●		
STEEL	NuGrey (F)	●	●	●	●	●	●	●	●	●
	Creme White (C)	●	●	●		●			●	●
	Black (M)	●	●	●	●	●	●	●	●	●
	Titanium (V)				●					
	Metal Grey (H)	●							●	
	Warm Brown II (R)	●	●	●					●	
	Steel Blue (L)			●						
	Taupe (T)		●	●						
	Wine (W)			●						
WOOD	Maple Hardwood (Y)						●			

*Foundations and LMS frames available in black only.

enclosures matrix

	Paramount	Vantage S2	Four-Post Rack
STEEL PANELS	NuGrey (F)	●	●
	Black (M)	●	●
STEEL DOORS	Titanium (V)	●	
	Bronze Taupe (D)	●	
	NuGrey (F)	●	●
	Black (M)	●	●
PLEXIGLAS® DOOR TINT	Clear (C)	●	●
	Light Smoked (L)	●	●
	Dark Smoked (D)	●	●
LAMINATE	White Matrix (K)	●	
	Charcoal Matrix (G)	●	

laminates trim matrix

	Laminate	Trim
WORKSURFACE/SHELF	White Matrix (K)	NuGrey
	Charcoal Matrix (G)	Black
	Folkstone Grey (L)	NuGrey
	ESD Grey (E)	NuGrey
	American Cherry (A)	Black
	Natural Granite (N)	Creme White
	Oak (D)	Oak Base
	Silver (V)	Black
	Maple (Y)	Black
	Lodestone (H)	Metal Grey
	Warm Brown II (R)	Warm Brown II

wright · line

technical environment solutions

wright · line

Wright Line, a global leader in the design and manufacture of consoles, enclosures, office and other specialty furniture, has been serving the data center, office, call center, electronic laboratory and high-tech manufacturing environments for more than 70 years. Our innovative designs are manufactured to the highest quality and safety standards.

Also see our full line of enclosures, consoles, office and technical furniture.



Paramount Enclosure System Brochure



Profile Communication Consoles Brochure

Wright Line LLC
World Headquarters
160 Gold Star Boulevard
Worcester, MA 01606
Tel: 800-225-7348
508-852-4300
Fax: 508-365-6178
www.wrightline.com
info@wrightline.com

Wright Line Limited
400 Thames Valley Park Drive
Reading
Berkshire, RG6 1PT England
Tel: 44-1189-637-935
Fax: 44-1189-637-934

Wright Line Japan Company, Ltd
Seveness Building 2F
12-13 Nibancho, Chiyoda-ku
Tokyo 102-0084
Tel: 81-3-3221-8451
Fax: 81-3-3221-8455

TAB Canada
130 Sparks Avenue
Willowdale, Ontario M2H 2S4
Tel: 800-667-4020
Fax: 800-765-9705

For additional international representation, please contact us at 800-225-7348 or email info@wrightline.com.

Please ask for details of other products from Wright Line. All products and company names are trademarks or registered trademarks of their respective holders. Every effort has been made to ensure that the information contained herein is correct. The company reserves the right to modify product specifications without prior notice and assumes no responsibility for any error which may appear in this publication.

©Wright Line LLC, 2005 05-39/LP-15K/08-05 Printed in the USA.