



**LMS™**

furniture for technology-driven environments

wright • line

technical environment solutions



## Product Overview



### What is “technical furniture”?

Photo courtesy of Caliper Technologies Corp.



Technical Furniture describes modular furnishings designed to support computerized work applications across a wide range of technical disciplines. This true modular furniture is ideal for testing, monitoring, research and development, system analysis and other intensive tasks that require an innovative workstation platform.

Wright Line's furniture differs from conventional shelving, racks and tables because of its configuration ability and componentry. We can provide the ideal solution to properly support your work application, integrate your technology, comfortably and safely accommodate your personnel and adapt to meet future changes.

Since 1934, Wright Line has been providing exceptional technical furniture solutions to IT experts, engineers, system operators and other technical professionals. This brochure presents case studies of some of those installations and the reasons why our customers count on Wright Line – our premium products, superior design and outstanding customer service.

Throughout this brochure we refer to LMS™, Foundations™ and TechBench™ – the featured product lines in our family of technical furniture.

# workstations





#### Inset Photos Below

**Top:** Vertical space maximization at its best. This U-shaped configuration with tiered upper shelving and primary worksurfaces is well suited to manage and store multiple monitors, tower CPUs, servers and other tape drive devices in a densely packed area.

**Bottom:** This facility developed its own innovative solution for wire management by integrating a cable tray on top of the LMS frame structure. This kind of extensive cabling can also be successfully managed by vertical and horizontal cable ducts that mount directly to the face of LMS frames or uprights.



## Military Information Technology Lab

### State-of-the-Art Technology Meets State-of-the-Art Technical Furniture

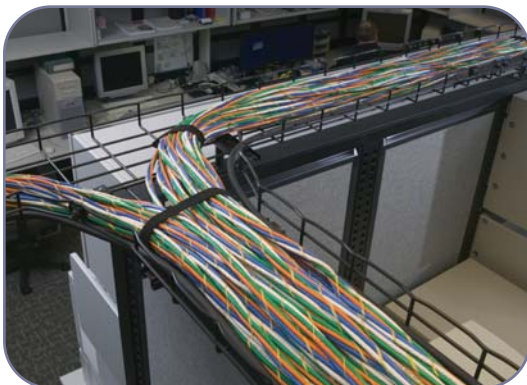


This high-tech military research facility, devoted to computer sciences and information technologies, employs hundreds of researchers, programmers and technicians who require unique solutions to support high-performance PCs, computer systems, and workstation design.

☐ **client criteria:** The customer wanted to create a distinct high-tech laboratory appearance that was compatible with their building design and architecture. Requirements called for a lab furniture system that would provide superior functionality to support multiple computers, monitors, hardware and integrated technologies; something that conventional panel or office furniture could not deliver.

☐ **installation:** Various open and closed laboratories located throughout a large technology directorate, housing more than 800 military and civilian employees.

☐ **system specifications:** A series of 61" and 84" high LMS frame systems in a variety of individual and team configurations, typically finished with decorative fabric TechWalls to complement the general office environment.





## Creative workstation designs for computer labs



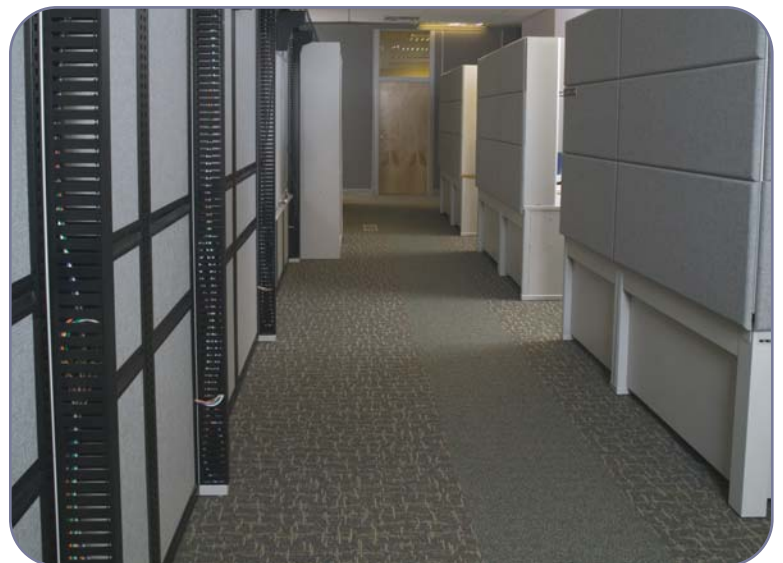
▲ A variety of corner shapes, transaction surfaces and linear size options are available to complement your floorplan design and support your technology integration. Linear surfaces are available in 27", 36" and 42" depths.

### **Inset Photos Right**

**Top:** Wright Line offers a variety of heavy-duty steel shelves designed to support large tower-style CPUs and other oversized equipment safely above or below your worksurface. Shelving can support up to 750 lbs. and is easily reconfigured to a new location based on the system modularity of our LMS frames.

**Bottom:** Our LMS frames can be finished with attractive fabric panels to complement our LINX® modular office furniture or even your own existing office furniture. Shown on LMS frames (left), vertical cable management ducts route wiring throughout the system and permit easy access and visibility to internal wiring.

The configuration-building features of the LMS system permit creative workstation designs to accommodate room architecture or create stand-alone workstations. Unlike floor-to-ceiling panel lines from traditional office furniture companies, LMS is a true technical furniture platform that supports heavy-duty shelves and worksurface components to manage large and valuable computer and server equipment. Single frame sections of LMS can support up to 2000 lbs. of equipment and components. And, components can be installed on one-inch standards to precisely mount densely packed hardware.

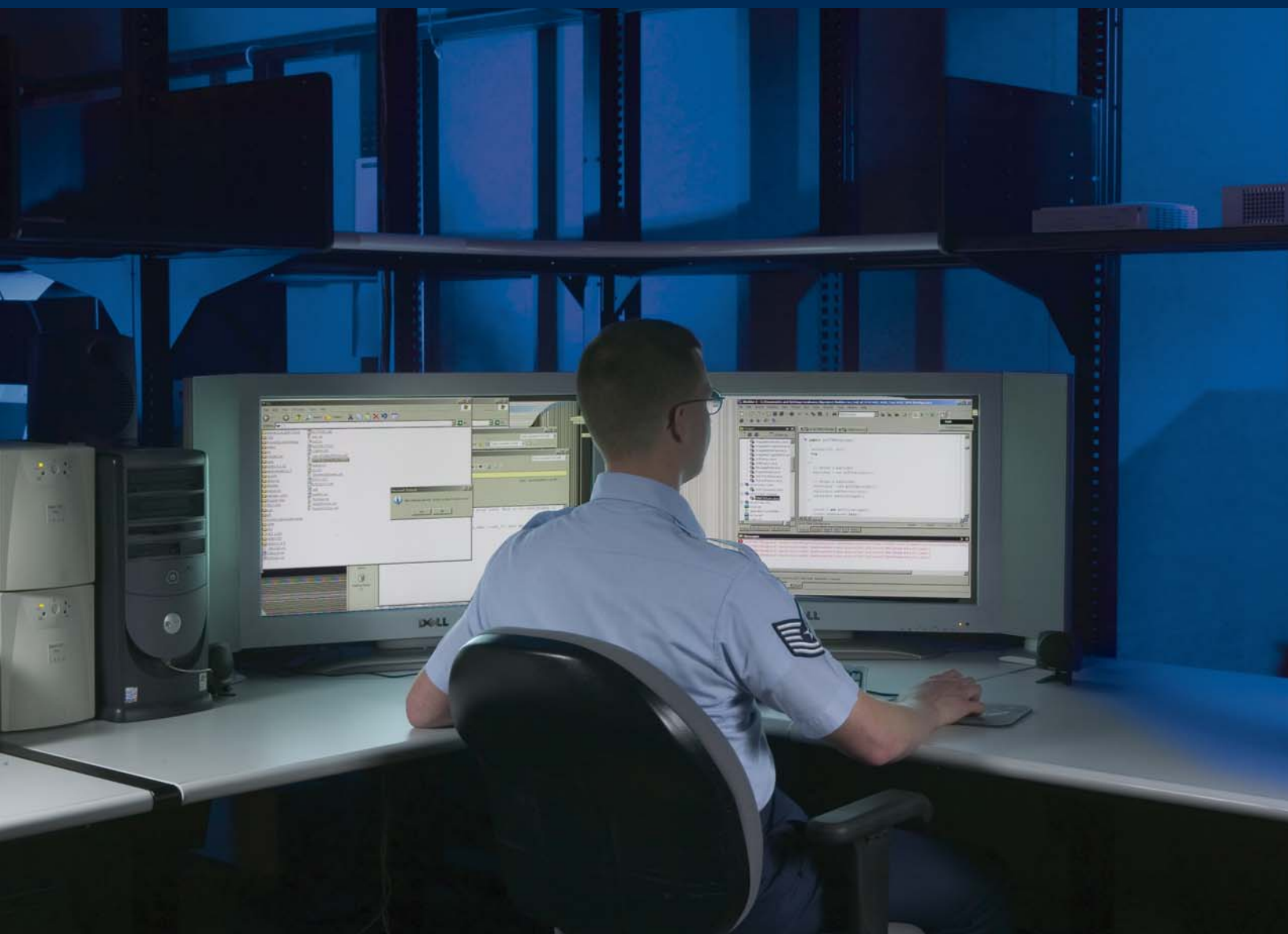




◀ LMS frames are available in 45", 61", 72" and 84" heights to work with the architecture of your room or lab. Shown here, this 45" high frame system permits visibility through an adjacent department's window.

# □ technology

*Oversized corner worksurface options easily accommodate large LCD and plasma displays. Overhead laminate shelving is also a complementary storage level for software, reference materials and back-up tape drives.*





#### Inset Photos Below

**Top:** Flush-mounted vertical peg boards and bin rails neatly organize tools and small parts common to computer repair and service. Work-in-process items are easily accessed and stored directly on the Foundations system to maximize workspace on primary surfaces.

**Bottom:** Optional small fabric panels mount to Foundations' uprights to provide convenient posting surfaces without sacrificing valuable storage space for shelving and other equipment.

## McKesson Corporation



### Flexibility with Foundations™



McKesson Corporation leads the healthcare industry with innovative and efficient solutions dedicated to care management products and services and represents one of the largest industrial corporations in the United States. McKesson selected Wright Line's Foundations line, a flexible electronic lab system, which is a cost-effective alternative to LMS with many of the same sophisticated technical and storage characteristics of our premium line.

☐ **location:** Cranberry Township, PA.

☐ **client criteria:** Heavy-duty specialized workstations that permit component adjustability and system expansion to support future growth or changes. Space efficient design integrated within a small data center environment.

☐ **system specifications:** A linear run of 84" high Foundations units with ESD-dissipative worksurfaces, overhead storage shelving and work-in-process panel options, supports IT technicians who repair and build computer systems. A Profile™ Flat Panel Console (background) serves as a separate monitoring station supporting flat screen technology.

☐ **installation:** Data center including PC set-up and repair located within a McKesson facility.









#### Inset Photos Below

**Top:** In addition to the LMS system, our freestanding TechBench, with attachable wall systems, is ideal for individual test or research stations. Our laminate worksurface options support up to 500 lbs.

**Bottom:** TechBench can be specified with a maple hardwood top for medium-duty applications and supports loads up to 1,000 lbs. This bench is complemented by a 48" tall TechOrganizer frame and overhead ambient task light.



## Robert Bosch Corporation

### World-class Manufacturer Selects Best-in-Class



As a designer and manufacturer of precision automotive systems and components sold to vehicle and powertrain manufacturers in the United States and abroad, Robert Bosch Corporation operates multiple, complex lab projects throughout its Farmington Hills, Michigan facility. They require flexible lab systems that address technology and project changes within the office and production floor areas.

- **location:** Bosch's North American automotive headquarters (410,000 square foot facility).
- **client criteria:** High-density equipment storage on a flexible lab system that offers the aesthetics and functionality of office furniture. Product solutions that are modular, offering ample storage for equipment, multimedia, parts and tools.
- **system specifications:** Multiple full-scale LMS configurations with ESD-dissipative upgrades complemented by TechBench™ units. Depending on the application, LMS configuration options accommodate test chambers and facility equipment. Optimedia® Storage System, in several heights and configurations, offers ample storage.
- **installation:** Various open and closed laboratories dedicated to testing, research and development.





*Featuring a true system-building design, LMS allows for this impressive configuration which wraps around a NVH (noise, vibration, harshness) chamber in a lab area at Bosch.*

## Flexible lab systems that address technology

With the use of TechWalls, LMS allows you to configure enclosed labs that reduce noise, enhance aesthetics, and quarantine equipment in sensitive testing environments. In this application, Bosch looked to Wright Line because LMS offers a more professional, polished look — more of a laboratory feel — than competitive products. According to Bosch, “LMS is attractive and adaptable. We were able to find a solution for each application we had. We were not able to find that with another furniture company.”



#### Insets Above

**Top and Bottom:** Bin rails easily attach to the face of LMS frames to create high-density storage of small and large parts bins above a worksurface. Laminate shelving is even available with a fixed downward slope of 15-degrees.

Individual LMS units (up to 72" wide) may be configured ► with heavy-duty casters for service access by attaching an open base or full platform base. Featured here, the open base allows users to sit or stand at the workstation.

In addition to modular storage components for computerized technology, Wright Line offers a full host of specialized solutions for parts, bin and work-flow devices common to prep, assembly, test and fabrication applications.

## □ testing





## Hillsborough County, Thirteenth Judicial Circuit

### Crime scene analysis goes high-tech



Supporting a busy State Attorney's office in preparing crime scene responses and presentations for prosecutorial needs, this high-tech media suite is a central point for audio and video editing and other sophisticated multimedia activities. Considered state-of-the-art in its field, this lab has become a benchmark for other court systems to emulate.

□ **location:** Tampa, FL

□ **client criteria:** A configuration that would allow two or three staff members to work comfortably and efficiently in a small space while accommodating an assortment of audio and video editing equipment.

□ **system specifications:** Densely-configured LMS frame system with multiple steel and laminate shelf components that accommodate recorders, tape decks and editing gear. Worksurfaces accommodate multiple monitor displays and daily work-in-process.

□ **installation:** A multimedia laboratory that supports a legal staff of 100 attorneys and 12 investigators.



#### **Inset Photos Above**

**Top:** The full frame construction of the LMS system provides efficient use of vertical space. Even in the most space-constrained, technology-intensive environments, productive workstation design is easily achieved.

**Bottom:** A portfolio of laminate, tilt and space-efficient steel shelving allows precise placement of components to integrate recorders and display equipment. All components shown are easily adjusted vertically and laterally to accommodate configuration changes.





## Product Portfolio

Select your system solution  
from two high-performance modular lines.

☐ **LMS Full Frame:** LMS, our premiere solution, offers superior aesthetics, impressive load-bearing capabilities, integrated power and data solutions and component modularity. The LMS system is ideal for state-of-the-art technology laboratories and offices. Worksurfaces, shelving components and electronic storage modules mount directly to heavy-duty frames and are easily adjusted or reconfigured by the end-user.



▲ The base unit of an LMS configuration is a high-strength structural frame supported by two uprights. The system is ready to accept floor-supported and cantilevered components.



▲ Components mount directly to the face of the frame and can be precisely positioned on the frame along a one-inch vertical standard. Components fully engage the frame via mounting tabs or "hooks" and are easily relocated using common tools.



▲ Based on the modularity of the frame design, components of varying widths are compatible with this 72" wide frame model.

☐ **Foundations:** Foundations is our cost-effective product offering for basic bench, lab or production areas that do not require the full component modularity and design advantages of LMS. Many of the same specialized components for LMS are compatible with Foundations.



▲ Foundations' construction differs from LMS in that the vertical slotting for components is integrated directly to the vertical posts (uprights). Two "cross-ties" (top and bottom) join two uprights to create a freestanding unit.



▲ Foundations is typically configured with full-width components. However, this 72" wide unit is upgraded with an intermediate post to allow for additional component placement options.



▲ Foundations' flexible design can accommodate future needs with the use of a second intermediate post, as shown in this final configuration.



# System Design

With an extensive portfolio of frame sizes, worksurface shapes and configuration-building options, LMS and Foundations can be designed to accommodate room architecture, workflow, workstation privacy or teaming environments.



▲ **Back-to-back Configuration:** Our unique frame construction permits back-to-back configuration building to optimize floorspace with a shared footprint. The open design is ideal for clean sightlines and pass-through capability.



▲ **Interactive Configuration:** Space saving peninsula surfaces define individual stations and build interactive work zones. Available for seated and bench-height applications.



▲ **"T" Shaped Configuration:** A "T" corner post option creates two distinctive work cells that share common frames. Frame structures may be designed as open units or upgraded with decorative fabric or laminate wall inserts for workstation privacy.



▲ **Variable Configurations:** Corner posts enable you to design a customized system. Based on a 90-degree corner standard, you can create "L", "T" or "X" shaped configurations.

# product portfolio



## Specialized Components

Wright Line offers more than 500 components to help organize desktop space and provide storage and ergonomic access to computerized technology, electronic gear, tools, documentation and peripherals.



▲ **Steel Componentry:** Tower shelf stores tower-style CPUs and large equipment.



▲ **Laminate Componentry:** A 12"D shelf for small equipment storage.



▲ **Worksurface Componentry:** Available in 27", 36" and 42" seated worksurface depths. Our 36" deep surfaces are the most popular.



▲ **Comprehensive Cable Management:** Vertical cable management ducts are standard with most LMS uprights.



▲ **Horizontal cable management:** ducts serve as high-capacity raceways that accept wiring and optional power strips.



▲ **Integrated Services:** TechRaceway can be configured as an enclosed duct for concealed data wiring and electrical power sources.



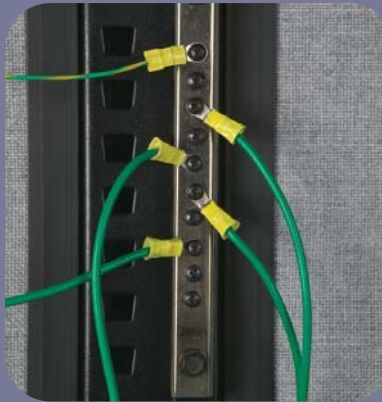
▲ **Ergonomic Solutions:** No knobs or handles are needed to adjust keyboard height with our Cobra Arm™. To adjust to a sitting or standing position, simply lift the keyboard and release.



▲ **Equipment Safety:** Dedicated steel shelving is engineered for seismic bracing of your equipment.



▲ **Rack-mount Integration:** Integrated rack-mount module for 19" rack-mount gear.



▲ **ESD Controls:** Common point grounding bar.



▲ **Productivity Tools:** Adjustable bin board accepts 3" and 5" storage bins.



▲ **Lighting & Accessories:** Adjustable task lighting attaches to most steel shelves and worksurfaces.

# wright • line

*Wright Line, a global leader in the design and manufacture of technical furniture and enclosure systems, has served the information technology, office, engineering, and high-tech manufacturing environments for 70 years. Our innovative designs are manufactured to the highest quality and safety standards.*



## **Wright Line LLC**

160 Gold Star Boulevard

Worcester, MA 01606

Tel: 800-225-7348

508-852-4300

Fax: 508-365-6131

**Web:** [www.wrightline.com](http://www.wrightline.com)

## **Canadian Distributor**

TAB Canada

130 Sparks Avenue

Willowdale, Ontario M2H 2S4

Tel: 800-667-4020

Fax: 800-765-9705

Because Wright Line is constantly improving its products, specifications are subject to change without notice. All products and company names are trademarks or registered trademarks of their respective holder. Every effort has been made to ensure that the information contained herein is correct. Wright Line assumes no responsibility for any error which may appear in this publication.

©2004 Wright Line LLC. All Rights Reserved. 04-15/LP-25K/8-04 Printed in the USA.