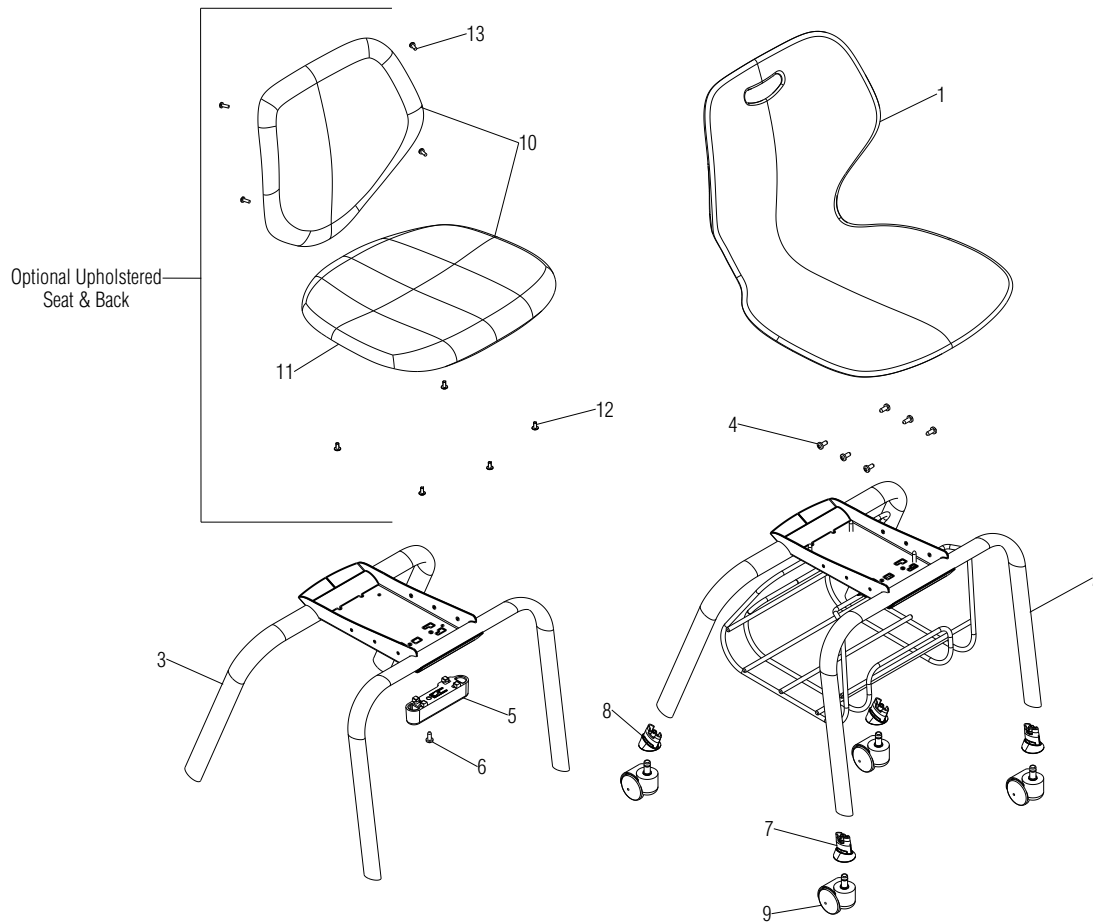


# Parts Diagram

## Intellect Wave® Classroom Furniture 4-Leg Caster Chair with or without Book Rack

June 2021



.XX = Select Color

Items 2 & 3 replacement frames do not come with casters or bushings. Casters or bushings must be ordered separately.

Item 2 book rack frame only used on large chairs.

| Item | Part Number  | Item Description   | Req Qty | Item | Part Number    | Item Description                                 | Req Qty |
|------|--------------|--|---------|------|----------------|--|---------|
| 1    | 46.9104.XXX  | Shell, 18" Large Chair   | 1       | 7    | 46.9312.X      | Assembly, Front Caster Socket Bushing (see note) | 2       |
|      | 46.9105.XXX  | Shell, 15" Medium Chair  | 1       | 8    | 46.9313.X      | Assembly, Rear Caster Socket Bushing (see note)  | 2       |
| 2    | 46.9271.XX.X | Weldment, 18" 4-Leg Caster Chair Frame with Book Rack (see note) | 1       | 9    | 09.0400.BL.A.X | Caster, 50mm Snap Ring Carpet                    | 4       |
| 3    | 46.9270.XX.X | Weldment, 18" 4-Leg Caster Chair Frame (see note)                | 1       |      | V.09.0110.BL.X | Caster, 50mm Snap Ring Hard Floor                | 4       |
|      | 46.9269.XX.X | Weldment, 15" 4-Leg Caster Chair Frame (see note)                | 1       | 10   | IWRC           | Seat & Back, Upholstered                         | 1       |
| 4    | 12.0074.P.X  | Screw, 1/4-20 x 5/8" Torx Pan Head                               | 6       | 11   | IWRC           | Seat, Upholstered                                | 1       |
| 5    | 46.9141.X    | Bumper, Stacking Front   | 1       | 12   | 12.0121.X      | Screw, #10-24 x 7/16" PTH M/S                    | 5       |
| 6    | 12.0561.X    | Screw, #10-24 x 1-1/4" Torx Pan Head                             | 1       | 13   | 12.0110.XX.X   | Screw, #10-24 x 1/2" PTH                         | 4       |

