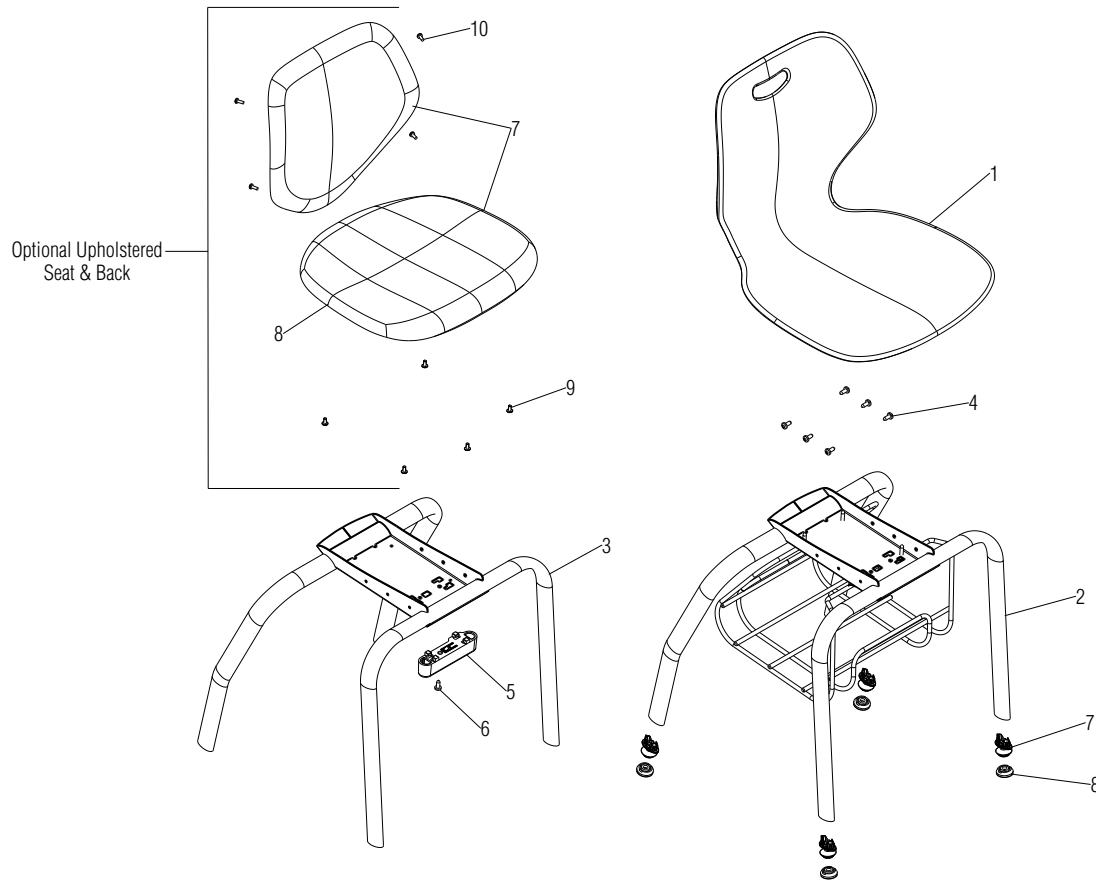


# Parts Diagram

## Intellect Wave® Classroom Furniture 4-Leg Music Chair with or without Book Rack

June 2021



.XX = Select Color

Items 2 & 3 replacement frames do not come with glides. Glides must be ordered separately.

Item 2 book rack frame only used on large chairs.

Item 6 felt glide (used after 2011), uses caps that are replaced when worn. Use item 7, felt cap to replace.

Item 8 glide cap removal tool (not shown) is used to remove old glide caps for replacement on felt glides. See KI-RR-000030 for instructions.

| Item | Part Number  | Item Description  | Req Qty | Item | Part Number  | Item Description                                    | Req Qty |
|------|--------------|---|---------|------|--------------|---|---------|
| 1    | 46.9104.XXX  | Shell, 18" Large Chair  | 1       | 7    | 46.9147.X    | Glide, Steel 4-Leg                                  | 4       |
|      | 46.9104.XX.U | Shell, 18" Large Upholstered Chair                              | 1       |      | 46.8204.X    | Glide, Nylon 4-Leg                                  | 4       |
|      | 46.9105.XXX  | Shell, 15" Medium Chair   | 1       |      | 46.8105.X    | Glide, Felt Solo 4-Leg (see note)                   | 4       |
| 2    | 46.9281.XX.X | Weldment, 19" 4-Leg Music Chair Frame with Book Rack (see note) | 1       | 8    | 10.0129.X    | Cap, Felt Glide (see note)                          | 4       |
| 3    | 46.9280.XX.X | Weldment, 18" 4-Leg Music Chair Frame (see note)                | 1       | 9    | 10.0138.X    | Removal Tool, Felt Glide Cap (not shown) (see note) | 1       |
|      | 46.9285.XX.X | Weldment, 15" 4-Leg Music Chair Frame (see note)                | 1       | 10   | IWRC         | Seat & Back, Upholstered                            | 1       |
| 4    | 12.0074.P.X  | Screw, 1/4-20 x 5/8" Torx Pan Head                              | 6       | 11   | IWRC         | Seat, Upholstered                                   | 1       |
| 5    | 46.9141.X    | Bumper, Stacking Front  | 1       | 12   | 12.0121.X    | Screw, #10-24 x 7/16" PTH M/S                       | 5       |
| 6    | 12.0561.X    | Screw, #10-24 x 1-1/4" Torx Pan Head                            | 1       | 13   | 12.0110.XX.X | Screw, #10-24 x 1/2" PTH                            | 4       |

