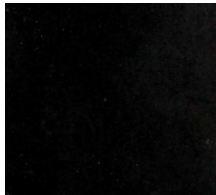


# COLOR



# INTERIOR FINISHES

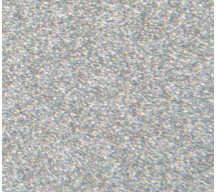
Available in textured or smooth finish, Williams standard interior polyester powder coat perfectly accents architectural elements.



HEW BLACK  
RAL 9011



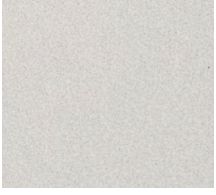
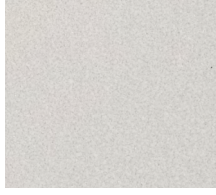
HEW BRONZE  
RAL 7022



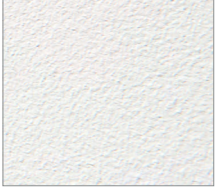
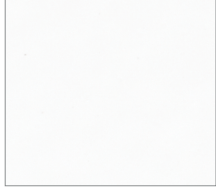
HEW NICKEL



HEW SILVER



HEW ALUM  
(smooth finish)



HEW WHITE





Sherwood Elementary | Springfield, MO  
Architect: Sapp Design Architects

# EXTERIOR FINISHES

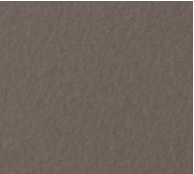
Williams exterior super durable polyester powder coat meets and exceeds AAMA 2604 specifications for outdoor durability.



BLACK  
BLK (RAL 9004)  
Smooth Satin



DARK BRONZE  
DBZ Smooth Satin



MEDIUM BRONZE  
DBR Smooth Satin



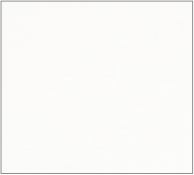
SATIN ALUMINUM  
SLV (RAL 9006)  
Smooth Satin



GREEN  
GRN (RAL 6005)  
Smooth Gloss



GRAY  
Standard gray  
Smooth Gloss



WHITE  
WHT (RAL 9003)  
Smooth Satin

## CUSTOM COLOR

Looking for something unique? Choose from over 200 colors with the industry standard RAL Classic color system – simply specify the RAL number as an option.

## MULTI-STAGE PROCESS

Williams state-of-the-art, multi-stage wash, rinse, and seal washer process produces little to no sludge and requires less energy than other types of washer systems. Oil skimmers reclaim washer contaminants for re-cycle to allow for environmental responsibility while providing even coverage, excellent paint adhesion, and superb corrosion resistance.

- An environmentally-friendly process with the highest quality results
- Significant energy savings
- Reduced waste/sludge



## ANTI-MICROBIAL WHITE FINISH

Anti-microbial white paint (AMW) prevents the spread of dangerous micro-organisms and suppresses the growth of mold and bacteria.

Independent laboratory results show a significant decrease in microbial population on surfaces coated with anti-microbial paint.

Formulated to provide protection over an extended period of time and frequent washings, AMW is extremely durable and demonstrates an outstanding chemical and stain resistance. Ideal for hospitals, schools, laboratories, and medical facility applications.

# PAINT AFTER FABRICATION

Whether you choose a standard color, or go for something a little different, Williams is committed to the highest quality: all parts powder coated after fabrication.

POST-PAINT STEEL (Williams Standard)	PRE-PAINT STEEL (Industry Standard)
<ul style="list-style-type: none"><li>Smooth edges—installs without gloves.</li></ul>	<ul style="list-style-type: none"><li>Razor sharp edges—potential injuries to installers.</li></ul>
<ul style="list-style-type: none"><li>Inhibits rust on edges.</li></ul>	<ul style="list-style-type: none"><li>Rust accelerates on unpainted edges and bends.</li></ul>
<ul style="list-style-type: none"><li>Consistent paint coverage and thickness (controlled by Williams).</li></ul>	<ul style="list-style-type: none"><li>Inconsistent, minimum paint coverage and thickness (controlled by steel mills).</li></ul>
<ul style="list-style-type: none"><li>Uniform and higher reflectance, results in added efficiency.</li></ul>	<ul style="list-style-type: none"><li>Reflectance varies on pre-painted steel, results in (±84%) lower efficiency.</li></ul>
<ul style="list-style-type: none"><li>Multi-stage, phosphate-free steel cleaning process prepares parts for paint and results in a high quality paint finish.</li></ul>	<ul style="list-style-type: none"><li>Fabrication cutting oils, scratches, and die-marks on finished components.</li></ul>
<ul style="list-style-type: none"><li>Highly resistant to corrosive elements.</li></ul>	<ul style="list-style-type: none"><li>Susceptible to ultra-violet rays and other corrosive elements with resulting oxidization.</li></ul>
<ul style="list-style-type: none"><li>State-of-the-art powder-paint system reflects Williams commitment to quality.</li></ul>	<ul style="list-style-type: none"><li>Optional “painted after fabrication” may not include all parts and is typically applied over pre-painted steel.</li></ul>





**H.E. WILLIAMS, INC.**

831 West Fairview Ave | Carthage, MO 64836

417-358-4065

[hew.com](http://hew.com)