

Return, Extension and Bridge for U-Leg and Open-Frame Leg Assemblies, and T-Leg and Post-Leg Bases

Tools Required

- 5 MM Allen Wrench/Driver

Hardware Required

- M6 x 12 Socket Head Screw

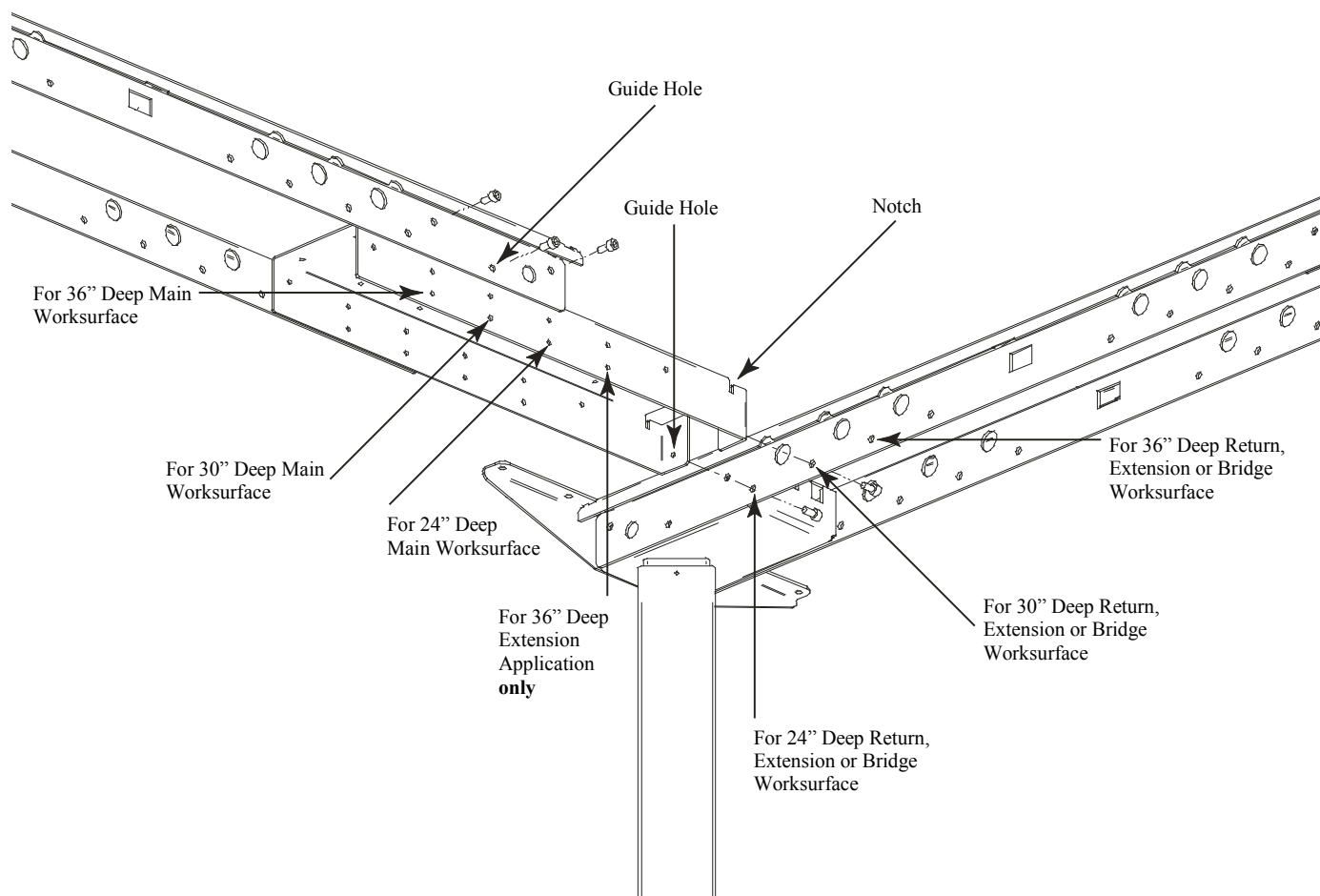
Installation

Important:

- All fasteners using tapped holes should be started by hand to prevent cross-threading.
- Begin the installation at the highest point of the floor, with first Legs being set to standard 27 3/4" height, unless otherwise specified. 8 MM Allen Wrench is used to make adjustment on Legs with machine screw adjustment.
- Assemble Support Rails to appropriate Frame or Base at end of Returns and Extensions prior to making connection to Main Support Rail. (Figure B) See Assembly Instructions for U-Leg and Open-Frames or T-Leg and Post-Leg Bases, 2383871 & 2383872.
- For Electric Height-Adjustable T-Leg and Post-Leg Bases see Priority Assembly Instruction 2383883 for proper initialization.
- Bases are easiest to assemble when upside-down.
- Worksurface installation is not complete until Flat Brackets (**ordered separately**) are installed. (See Tip 7)

Important assembly instructions, tips and figures shown on next page.

Figure A



Proper product installation, in accordance with these instructions, is the responsibility of the installing agent. If you have any questions concerning these instructions, please call Kimball Office Customer Care.

Kimball®Office

1. When installing a frame with 90" or 96" Support Rails, first assemble smaller Support Rails with the Support Rail Connector using M6 x 12 Socket Head Screws (12 per Support Rail Connector), as with a Main Support Rail. (Figure B)
2. Attach Support Rails to Return Mounting Bracket. To ensure the proper holes are used during installation, begin by aligning Guide Hole on Support Rail with appropriate mating hole on Return Mounting Bracket using M6 x 12 Socket Head Screw. Then install remaining M6 x 12 Socket Head Screws (6 per Return Mounting Bracket). (Figures A and B)
Important: In order to determine appropriate holes to use for proper assembly, see enlarged view. (Figure A)
Note: In order to properly connect the Return Mounting Bracket to the Main Support Rail, the Notch shown in Figure A must first be aligned with the short flange on Main Support Rail.
3. For Bridge Frame, repeat step 1 for opposite end.
4. Assemble Support Rails to Leg Assembly or Base. See important installation notes for further instructions.
5. With fully assembled Return, Extension or Bridge, connect Return Mounting Bracket to Main Support Rail with M6 x 12 Socket Head Screws (2 per Return Mounting Bracket), using a secondary method to support the frame while aligning holes. (Figure B) To ensure the proper holes are used during installation, begin by aligning Guide Hole on Return Mounting Bracket with appropriate mating hole on Main Support Rail using M6 x 12 Socket Head Screw.

5. (continued) (Figures A and B) Then install remaining M6 x 12 Socket Head Screw.

Important: In order to determine appropriate holes to use for proper assembly, see enlarged view. (Figure A)

Tips

1. Support Rails are to be oriented as shown in Figure C.
2. Assembly may be done upside-down **prior** to connecting Return, Extension or Bridge Frame to Main Support Rail if preferred. (Figure B)
3. Support Rails are approximately 5" shorter than nom size.
3. Support Rails for Extensions are 12" shorter than those that come with Returns due to Column being inset from end of Worksurface.
4. For installing Worksurfaces to Frames or Bases, see Priority Worksurface Assembly Instructions 2383879.
5. When Worksurfaces are assembled, install Flat Brackets (**ordered separately**) according to Priority Desk, Bridge and Credenza Assembly Instructions 2008510 for each adjoined surface.

Important: Installation of Worksurfaces is **not** finished without completing item 7, and will not be properly secured until doing so!

Figure B

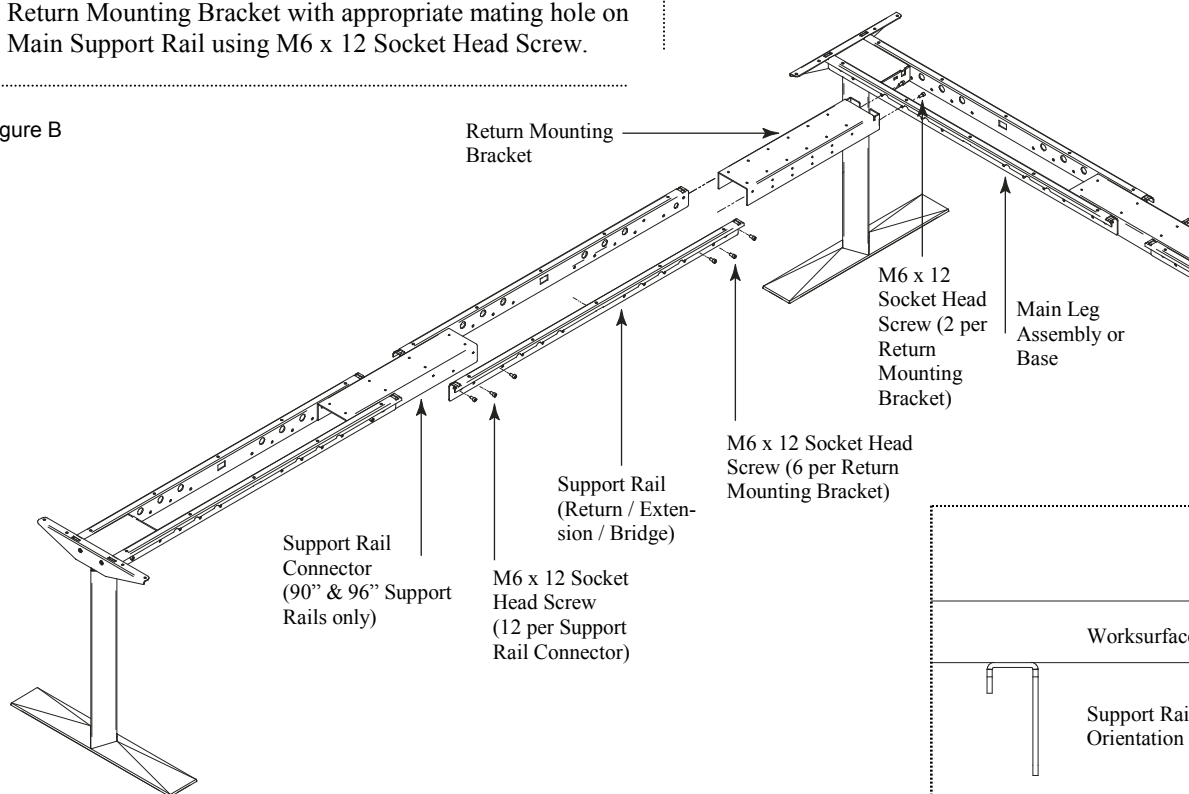


Figure C

