

## Modesty Surround

### Tools Required

- Cordless Drill
- #2 Phillips head bit

### Hardware Included

- #8 x 5/8" panhead screws
- L brackets
- Double side adhesive tape

### Installation

1. These components are non-handed and can be configured as a left or right surround. (Figure A)
2. Fasten short end panels to inside of long back panel with brackets and screws provided. (Figure B)
3. To install, place worksurface on clean soft surface underside facing up. Fasten surround to worksurface with brackets and screws provided. (Figure C)
4. Carefully turn the worksurface upright and place it on the benching worksurface in its desired position mark this location. Lift the surround and remove the film backer from the double-sided adhesive tape. Adhere the surround to the marked location on the benching worksurface.

**CAUTION:** The tape is a very strong adhesive and bonds instantly to any surface it is applied to.

Figure A

Right Shown

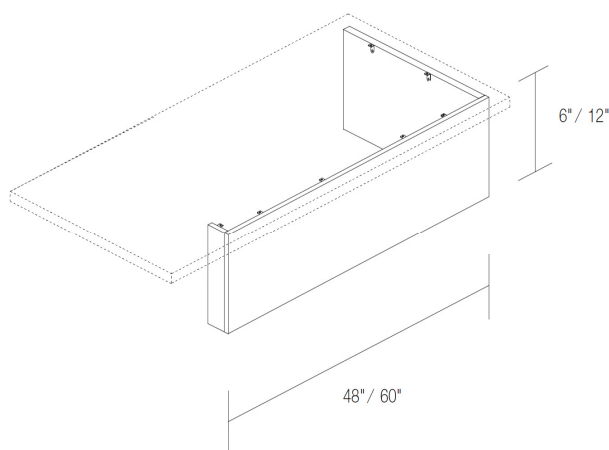


Figure B

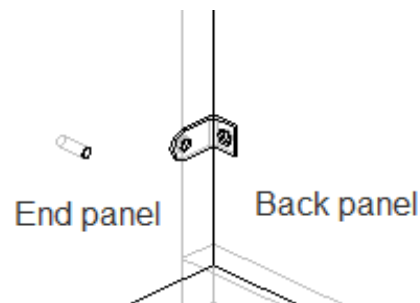


Figure C

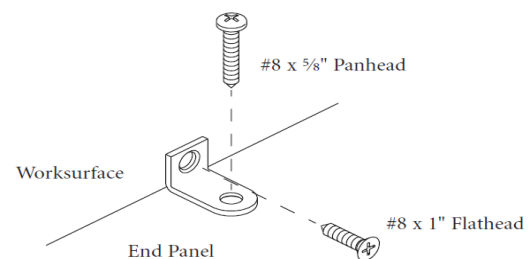


Figure D

