

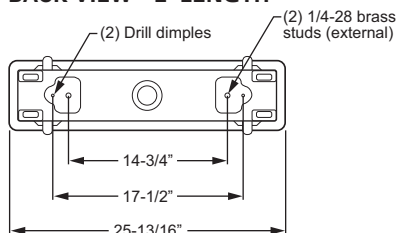
### WARNING:

- This product must be installed in accordance with the applicable installation code by a person familiar with the construction and operation of the product and the hazards involved.
- Make sure all electrical power is turned off while installing the fixture.
- This luminaire must be adequately grounded for protection against shock hazards and to assure proper operation.
- Disconnect power before servicing.

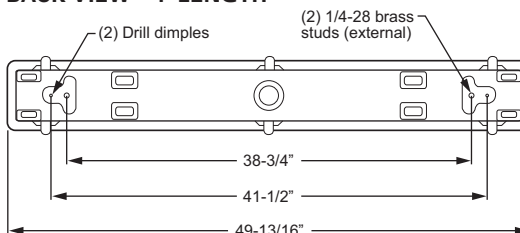
### \*\* INSTALLATION OF THESE PRODUCTS SHOULD ONLY BE PERFORMED BY A QUALIFIED ELECTRICIAN. \*\*

**STEP 1:** Fixture is supplied with (2) 1/4-28 brass studs for fixture mounting at the dimensions indicated below.

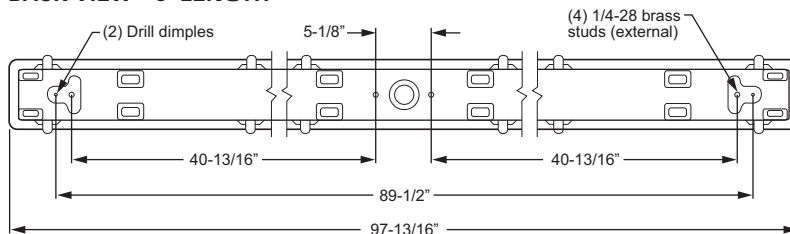
#### BACK VIEW – 2' LENGTH



#### BACK VIEW – 4' LENGTH

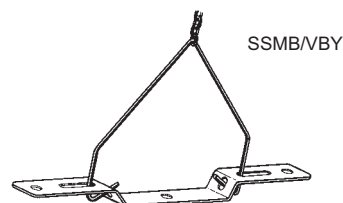
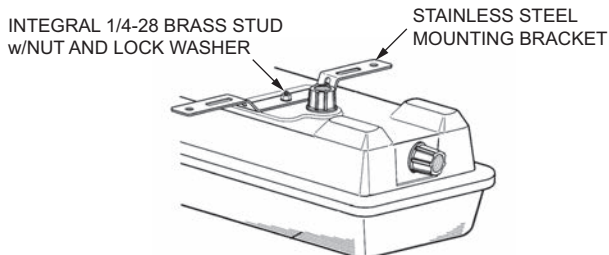


#### BACK VIEW – 8' LENGTH



**STEP 3:** For **SURFACE MOUNTING** use (2) brackets (fixture catalog suffix "SSMB"). Attach to 1/4-28 studs in housing with supplied nut and lock washer.

For **VBY OR CHAIN HANGING**, VBY hanger can be attached to mounting brackets as shown below.



**STEP 4:** For electrical connections, drill dimples are provided at the dimensions shown above (instruction 1), or fixture can be ordered with factory installed "WET" hub out the end or top of the fixture housing.

