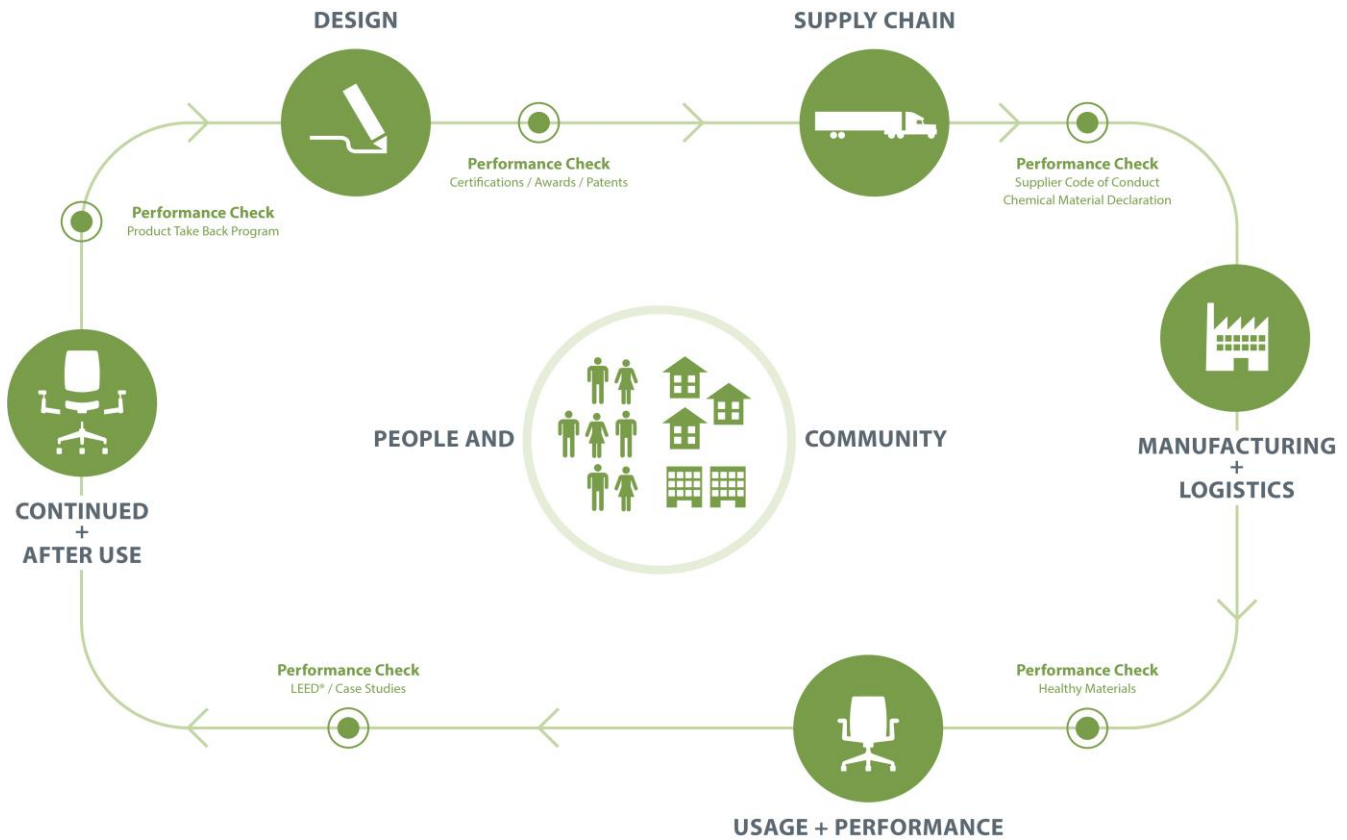




Planes Cart®

Category: Collaborative Tools

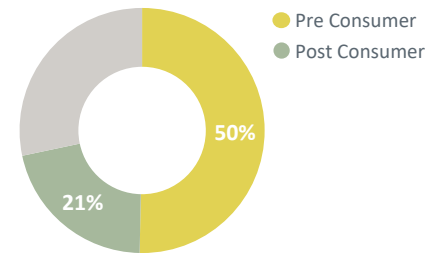


Beautifully simple and thoughtfully designed, Planes offers a variety of elements, including mobile carts, to enhance collaboration. Planes carts let people bring work materials exactly where they're needed, when they're needed.

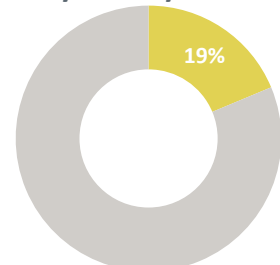
Planes Cart is manufactured in a zero landfill, ISO 9001 and ISO 14001 certified facility in Holland, Michigan and is transported in freight vehicles with optimized volume for efficient use of loading space. When a product reaches the end of its useful life, customers and partners are encouraged to avoid landfilling and instead pursue second life options.

Material	Material Weight	
Particleboard	67.74 lbs	(74%)
Aluminum	9.47 lbs	(10%)
Other	6.88 lbs	(7%)
Plastic	5.13 lbs	(6%)
Steel	2.57 lbs	(3%)
Total	91.79 lbs	(100%)

Recycled Content



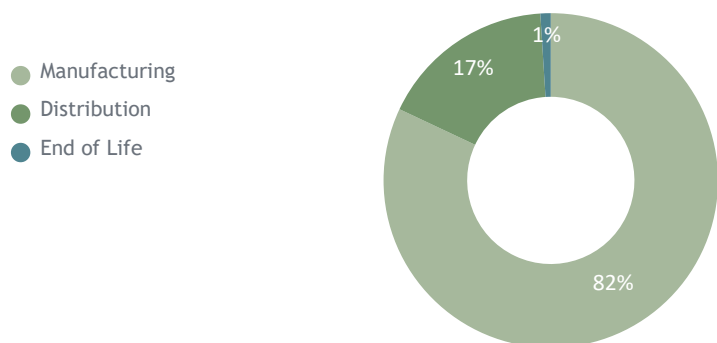
Recyclability



Life Cycle Assessment (LCA)

Carbon Footprint	369 kg CO ² eq.
Acidification	1.95 kg SO ₂ eq.
Eutrophication	0.187 kg N eq.
Smog	28.5 kg O ₃ eq.

Impact by Life Cycle Stage



Material Chemistry

Haworth is committed to providing our customers with products that support safe and healthy environments. We are working diligently toward the ongoing reduction of hazardous chemicals associated with parts and materials we source, as new safer alternatives become commercially available.

These include, among others, PVC, benzidine dyes, hexavalent chromium, certain hazardous phthalates, PBDE flame retardants, and those chemicals known to contribute towards ozone depletion.

We are committed to achieving our goal of being transparent with our customers on our progress.

Haworth Banned Chemical List Compliant

Certifications



Greenguard Certified
 Certification # 5256-410
 Refer to spot.ul.com for certificate



FSC® certified wood is available
 as a standard product offering
 Chain of Custody Code: SCS-COC-001218



BIFMA level 3 certified
 Refer to NSF.org for certificate

Building Standards

In support of building standards such as Leadership in Energy and Environmental Design, LEED® v4 and WELL Building Standard®v2:

Low Emitting Materials:

- Most Haworth products comply with ANSI/BIFMA e3-2014e Credit 7.6.1 and 7.6.2 demonstrated via GREENGUARD certificates found on spot.ul.com

Responsible Sourcing of Raw Materials:

- Most Haworth wood products are available as FSC® Mix 70%.
- Most Haworth products are composed of high recycled content.

Environmental Product Declarations (EPDs):

- Product-specific Type III EPDs are available for select high-volume products.