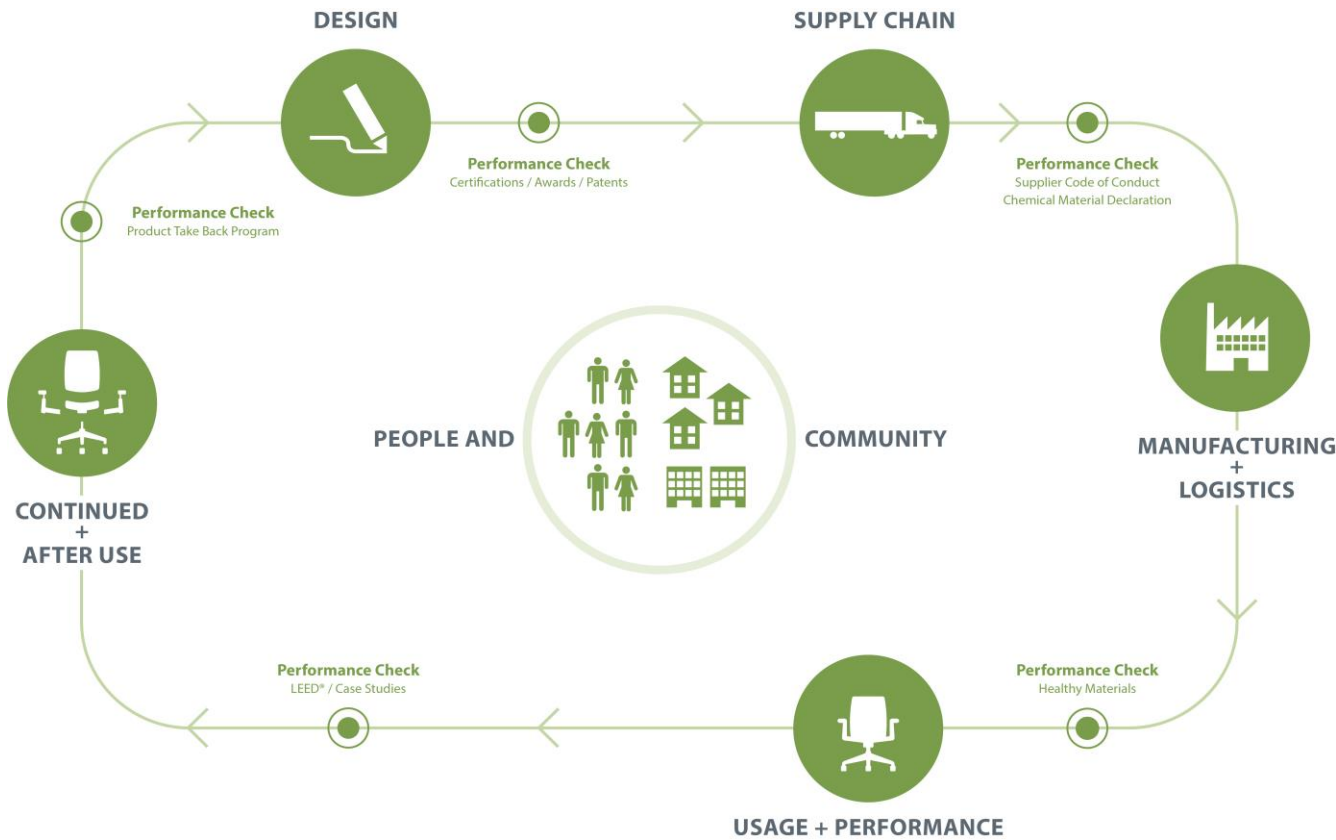




Improv XL®

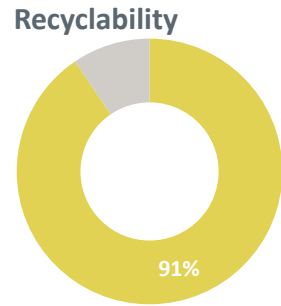
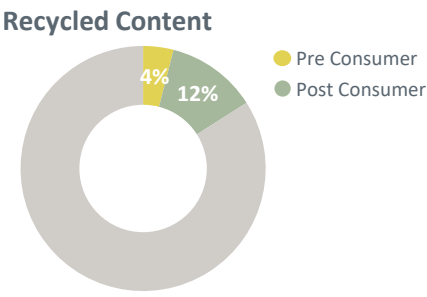
Category: Seating



The Improv XL chair is scaled up to ensure that everyone enjoys exceptional comfort, while still maintaining a consistent aesthetic with the rest of the Improv family of seating. The ergonomic contours and full complement of features make it the perfect task chair for any work environment.

Improv XL is manufactured in a zero landfill, ISO 9001 and ISO 14001 certified facility in Bruce, Mississippi and is transported in freight vehicles with optimized volume for efficient use of loading space. When a product reaches the end of its useful life, customers and partners are encouraged to avoid landfilling and instead pursue second life options.

Material	Material Weight	
Steel	28.95 lbs	(48%)
Wood	16.78 lbs	(28%)
Plastic	8.40 lbs	(14%)
Foam	4.55 lbs	(8%)
Other	1.12 lbs	(2%)
Total	59.80 lbs	(100%)



Life Cycle Assessment (LCA)

Haworth is committed to better understanding and reducing the environmental impacts of our products and operations.

Life Cycle Assessments (LCAs) are tools which allow us to evaluate potential environmental impacts of our products from cradle-to-grave including raw material extraction, pre-processing, production, product distribution, use and maintenance, and end-of-life management.

Results of LCA studies provide value in the identification of cost savings, improvement of design and material evaluation, advancement of procurement and transportation decision making, new product development criteria, as well as ultimately reducing Haworth's impact on the environment through continuous improvement efforts.

Material Chemistry

Haworth is committed to providing our customers with products that support safe and healthy environments. We are working diligently toward the ongoing reduction of hazardous chemicals associated with parts and materials we source, as new safer alternatives become commercially available.

These include, among others, PVC, benzidine dyes, hexavalent chromium, certain hazardous phthalates, PBDE flame retardants, and those chemicals known to contribute towards ozone depletion.

We are committed to achieving our goal of being transparent with our customers on our progress.

Certifications



Greenguard Certified

Certification # 993-420

Refer to spot.ul.com for certificate



BIFMA level 1 certified

Refer to NSF.org for certificate

Building Standards

In support of building standards such as Leadership in Energy and Environmental Design, LEED® v4 and WELL Building Standard®v2:

Low Emitting Materials:

- Most Haworth products comply with ANSI/BIFMA e3-2014e Credit 7.6.1 and 7.6.2 demonstrated via GREENGUARD certificates found on spot.ul.com

Responsible Sourcing of Raw Materials:

- Most Haworth wood products are available as FSC® Mix 70%.
- Most Haworth products are composed of high recycled content.

Environmental Product Declarations (EPDs):

- Product-specific Type III EPDs are available for select high-volume products.