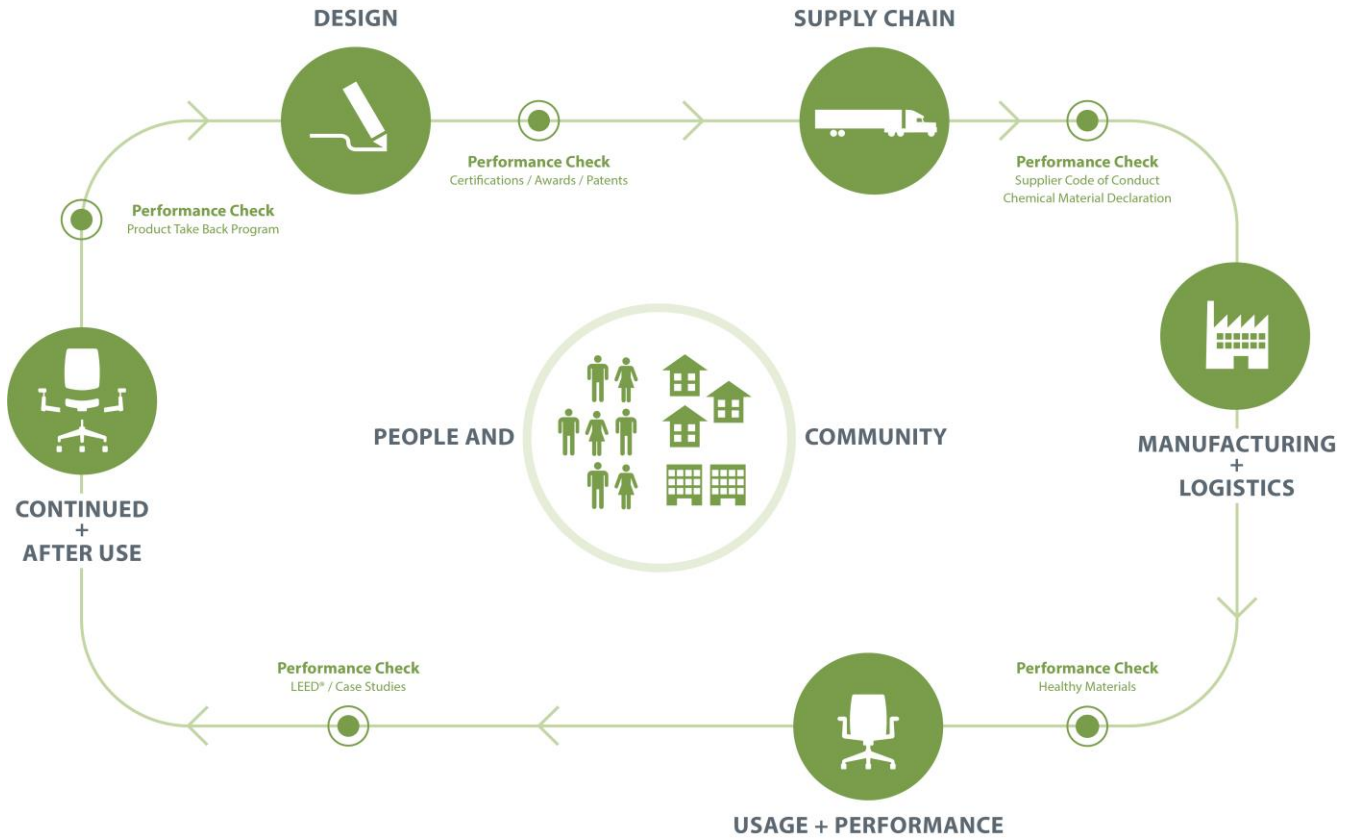




# Compose Storage

Category: Wood Casegoods

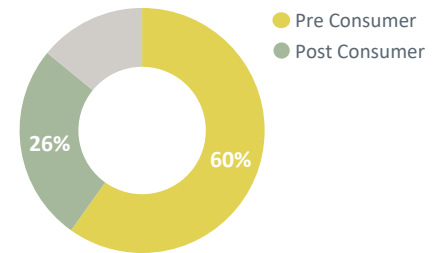


With its clean and simple, rectilinear design, Compose wood storage adds warmth to the work environment. Strong and durable, it meets a wide variety of user needs without sacrificing design.

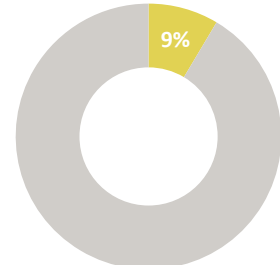
Compose Storage is manufactured in a zero landfill, ISO 9001 and ISO 14001 certified facility in Holland, Michigan and is transported in freight vehicles with optimized volume for efficient use of loading space. When a product reaches the end of its useful life, customers and partners are encouraged to avoid landfilling and instead pursue second life options.

Material	Material Weight
Particleboard	268.32 lbs (85%)
Steel	15.86 lbs (5%)
Wood	11.08 lbs (4%)
Plywood	10.10 lbs (3%)
Other	6.53 lbs (2%)
Adhesive	2.95 lbs (1%)
<b>Total</b>	<b>314.84 lbs (100%)</b>

### Recycled Content



### Recyclability

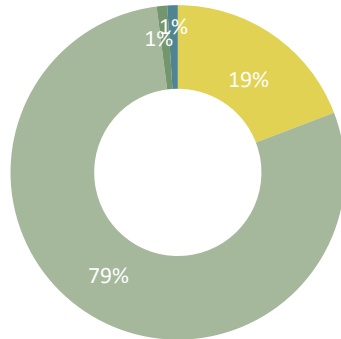


### Life Cycle Assessment (LCA)

Carbon Footprint	382 kg CO <sup>2</sup> eq.
Acidification	1.26 kg SO <sub>2</sub> eq.
Eutrophication	0.550 kg N eq.
Smog	12.9 kg O <sub>3</sub> eq.
Ozone Depletion	1.39E-06 kg CFC11 eq.

### Impact by Life Cycle Stage

- Procurement
- Manufacturing
- Distribution
- End of Life



### Material Chemistry

Haworth is committed to providing our customers with products that support safe and healthy environments. We are working diligently toward the ongoing reduction of hazardous chemicals associated with parts and materials we source, as new safer alternatives become commercially available.

These include, among others, PVC, benzidine dyes, hexavalent chromium, certain hazardous phthalates, PBDE flame retardants, and those chemicals known to contribute towards ozone depletion.

We are committed to achieving our goal of being transparent with our customers on our progress.

Haworth Banned Chemical List Compliant

Healthier Hospitals Healthy Interiors Compliant

\*Product configuration dependent. Contact Sustainability@Haworth.com

### Certifications



**Greenguard Certified**  
 Certification # 19422-410  
 Refer to spot.ul.com for certificate



**FSC® certified wood is available**  
 as a standard product offering  
 Chain of Custody Code: SCS-COC-001218



**BIFMA level 3 certified**  
 Refer to NSF.org for certificate



**mindful MATERIALS**  
 This product can be found in Haworth's mM library

### Building Standards

In support of building standards such as Leadership in Energy and Environmental Design, LEED® v4 and WELL Building Standard®v2:

#### Low Emitting Materials:

- Most Haworth products comply with ANSI/BIFMA e3-2014e Credit 7.6.1 and 7.6.2 demonstrated via GREENGUARD certificates found on spot.ul.com

#### Responsible Sourcing of Raw Materials:

- Most Haworth wood products are available as FSC® Mix 70%.
- Most Haworth products are composed of high recycled content.

#### Environmental Product Declarations (EPDs):

- Product-specific Type III EPDs are available for select high-volume products.