

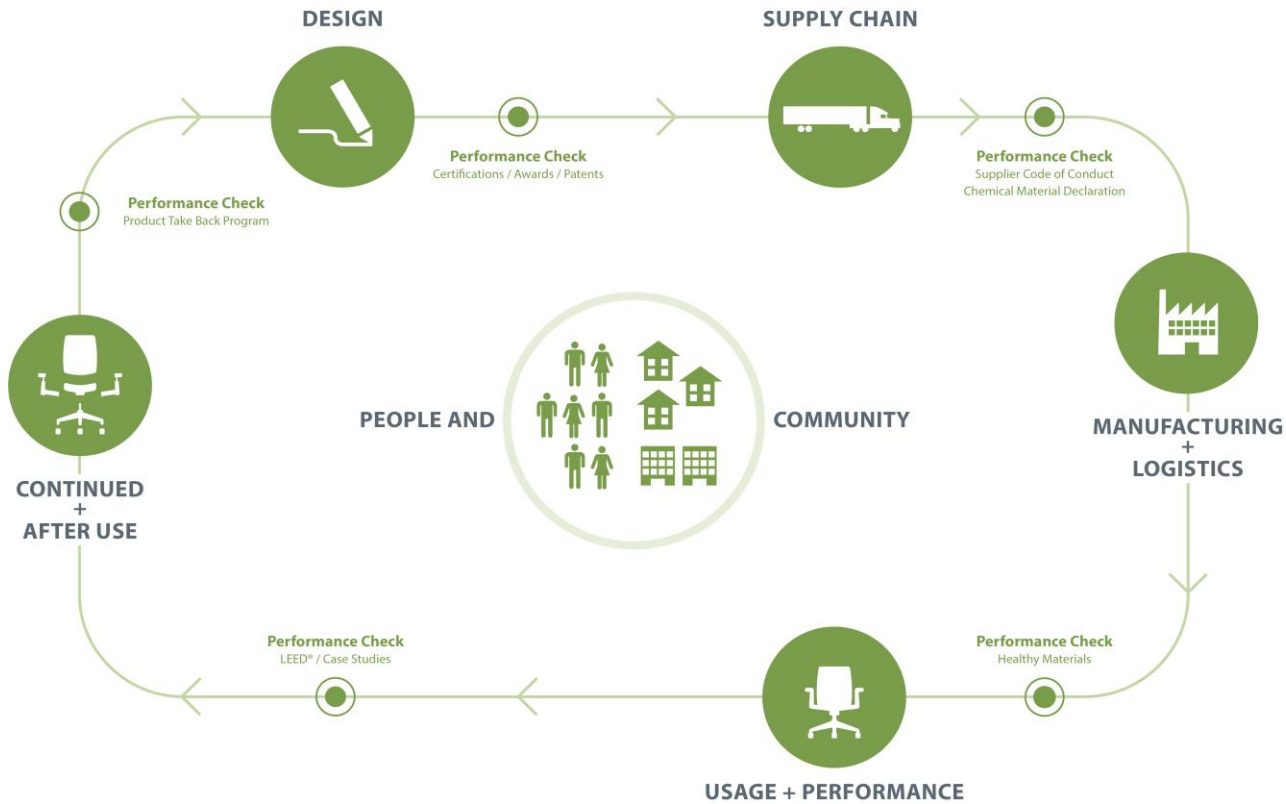
Product Environmental Data Sheet

Sector: North America



Belong Gallery End Panel™

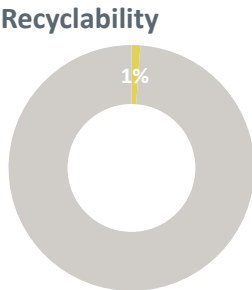
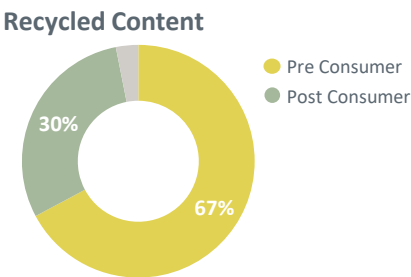
Category: Systems



Belong accessories offer an array of products to support a broad range of needs. Choose from clean and simple work tools, such as paper trays, tool cups, and blotters, or privacy screens and now the new Gallery End Panels, which are available in various heights to provide more modesty and privacy as well as the ability to more clearly define spaces. The Gallery End Panels are available on Compose®, Compose Connections™, Compose Beam, Intuity®, Reside®, Hop® and Planes®. Gallery End Panels are available in a variety of finishes that will enhance any customers style, brand or culture.

Belong Gallery End Panels are manufactured in a zero landfill, ISO 9001 and ISO14001 certified facility in Holland, Michigan and is transported in freight vehicles with optimized volume for efficient use of loading space. When a product reaches the end of its useful life, customers and partners are encouraged to avoid landfilling and instead pursue second life options.

Material	Material Weight	
Particleboard	93.00 lbs	(96%)
Laminate	2.00 lbs	(2%)
Steel	1.13 lbs	(1%)
Adhesive	1.00 lbs	(1%)
Total	97.13 lbs	(100%)



## Life Cycle Assessment (LCA)

Haworth is committed to better understanding and reducing the environmental impacts of our products and operations.

Life Cycle Assessments (LCAs) are tools which allow us to evaluate potential environmental impacts of our products from cradle-to-grave including raw material extraction, pre-processing, production, product distribution, use and maintenance, and end-of-life management.

Results of LCA studies provide value in the identification of cost savings, improvement of design and material evaluation, advancement of procurement and transportation decision making, new product development criteria, as well as ultimately reducing Haworth's impact on the environment through continuous improvement efforts.

## Material Chemistry

Haworth is committed to providing our customers with products that support safe and healthy environments. We are working diligently toward the ongoing reduction of hazardous chemicals associated with parts and materials we source, as new safer alternatives become commercially available.

These include, among others, PVC, benzidine dyes, hexavalent chromium, certain hazardous phthalates, PBDE flame retardants, and those chemicals known to contribute towards ozone depletion.

We are committed to achieving our goal of being transparent with our customers on our progress.

☒ Haworth Banned Chemical List Compliant

## Certifications



### Greenguard Certified

Certification # (Pending)

Refer to [spot.ul.com](https://spot.ul.com) for certificate

## Building Standards

In support of building standards such as Leadership in Energy and Environmental Design, LEED® v4 and WELL Building Standard®v2:

Low Emitting:

- Most Haworth products comply with ANSI/BIFMA e3-2014e Credit 7.6.1 and 7.6.2.
- Demonstration via GREENGUARD certificates.

Responsible Sourcing of Raw Materials:

- Most Haworth wood products are available as FSC® Mix 70%.
- Most Haworth products are composed of high recycled content.

Environmental Product Declarations (EPDs):

- Product-specific Type III EPDs including external verification are available for certain high-volume products.