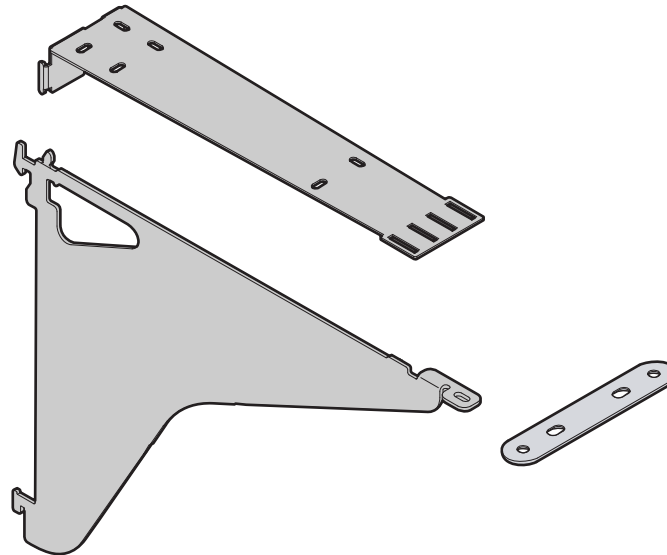
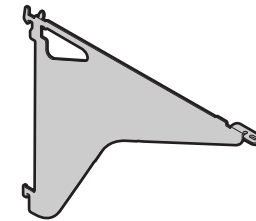


Universal Systems Worksurfaces On Montage® - On-Module Cantilever

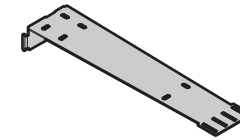


Components

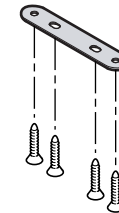
Cantilever



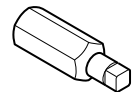
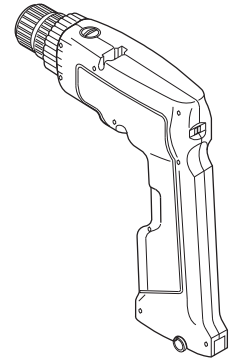
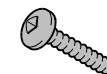
Mounting Plate



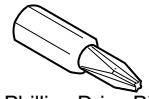
Tie Strap w/ #8-11 x 7/8" Flat Head Screws (TS7TIEPLATE)



#10-10 x 1" Pan Head Screw (855010168MP)



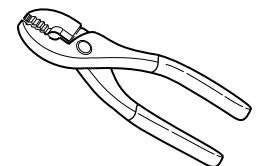
#2 Square Drive Bit



#2 Phillips Drive Bit



Bit Holder



If you have a problem, question, or request, call your local dealer, or Steelcase Line 1 at **888.STEELCASE** (888.783.3522) for immediate action by people who want to help you.

(Outside the U.S.A., Canada, Mexico, Puerto Rico, and the U.S. Virgin Islands, call: 1.616.247.2500) Or visit our website: www.steelcase.com

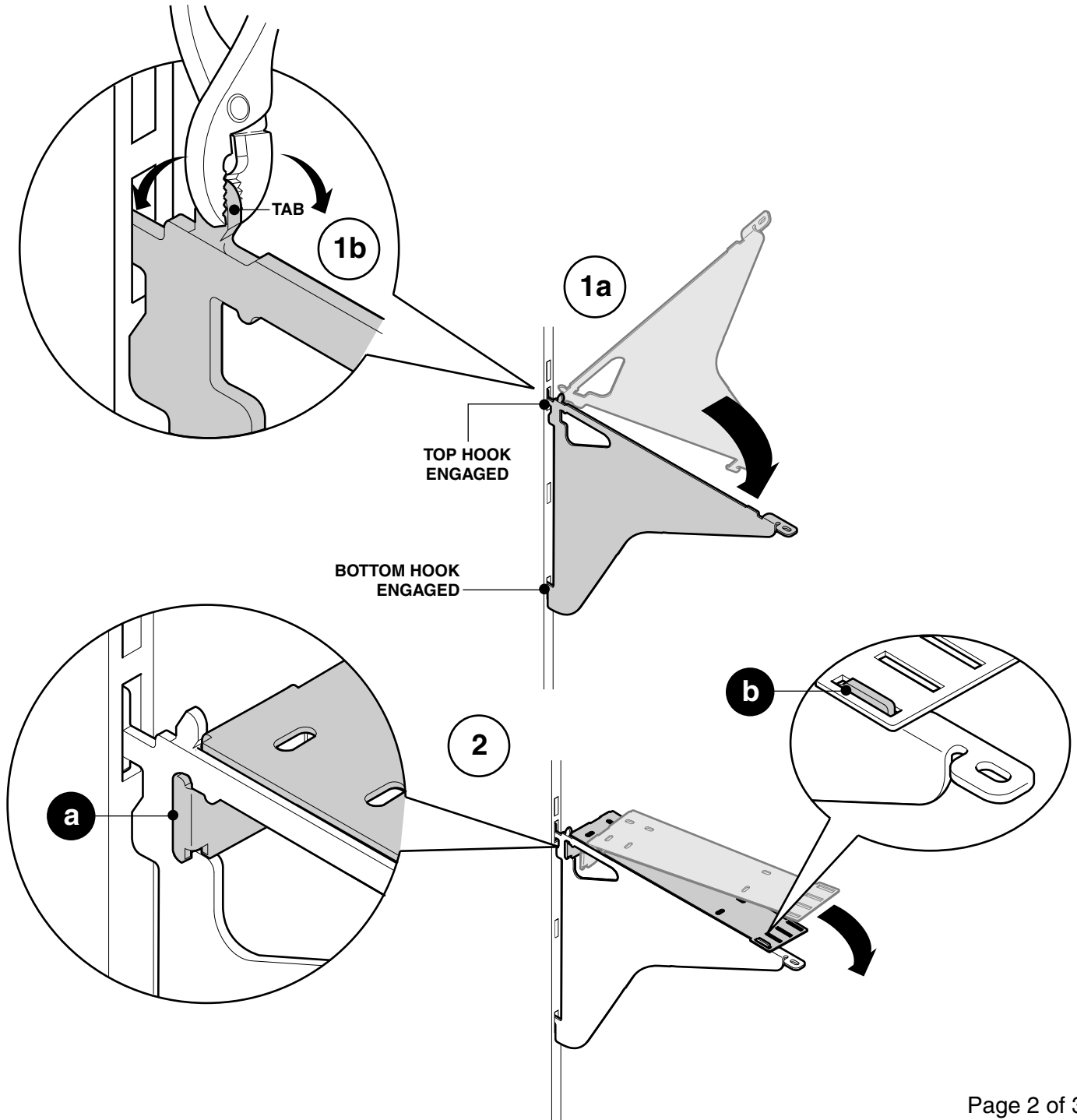
© 2006 Steelcase Inc.
Grand Rapids, MI 49501
U.S.A.

Printed in U.S.A.

1. Insert top hook of cantilever into vertical slot, swing down into the vertical position (1a). Insert bottom hook of cantilever into another slot.

NOTE: The tab shown (1b) provides 1/2" spacing on the panels. Remove this tab when used on applications where the worksurface is mounted flush to the panel.

2. Tip mounting plate and insert into cantilever (2a). Check to make sure the cantilever is fully engaged at the locations shown (a and b).



3. Lower worksurface (3a) and attach using four (4) #10-10 x 1" pan head screws for left or right hand cantilevers and seven (7) #10-10 x 1" pan head screws for the shared cantilever (3b).

4. Attach the tie strap using four (4) #8-11 x 7/8" flat head screws.

