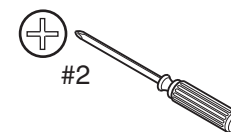
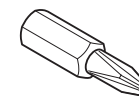
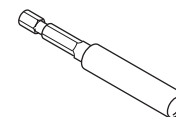
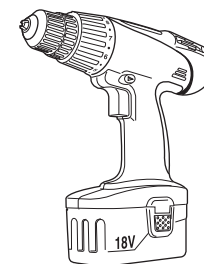


If you have a problem, question, or request, call your local dealer, or Steelcase Line 1 at **888.STEELCASE** (888.783.3522) for immediate action by people who want to help you.
(Outside the U.S.A., Canada, Mexico, Puerto Rico, and the U.S. Virgin Islands, call: 1.616.247.2500)
Or visit our website: www.steelcase.com

NOTE:
Workwall can be used as a divider with doors on either side of the unit.

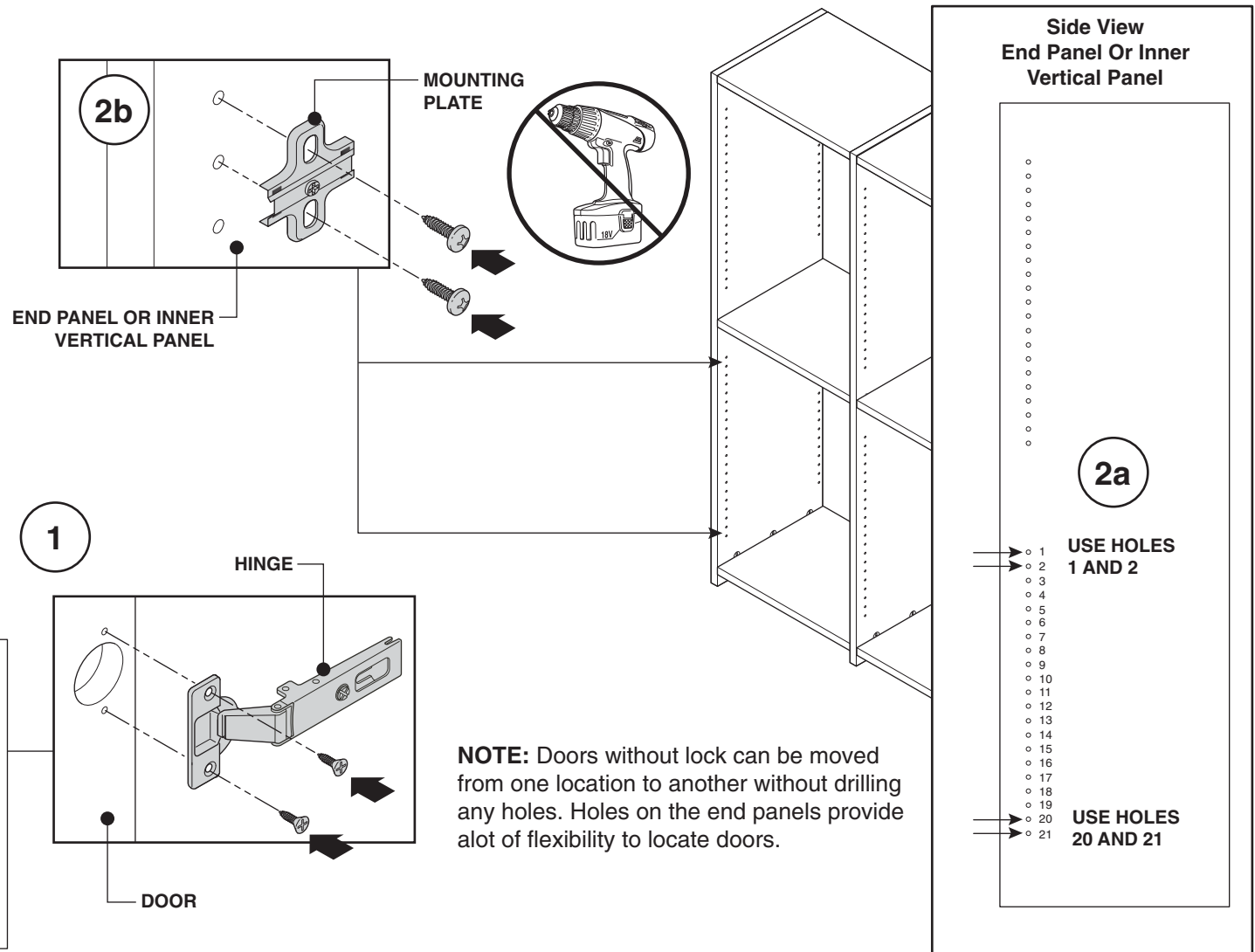
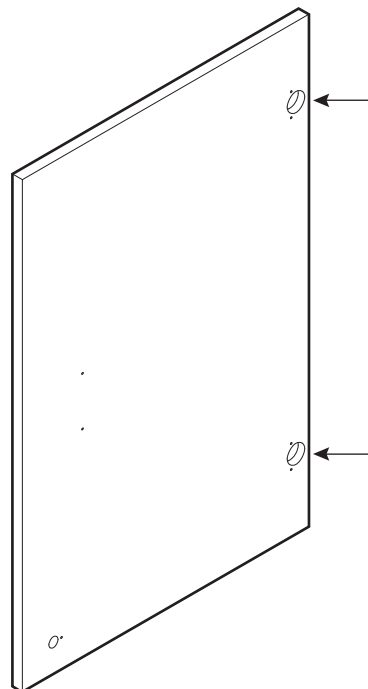


36" Door Installation

NOTE: The following is applicable to all scenarios. 3 unit is shown as an example.

1. Insert two (2) hinges into door as shown and attach using two (2) screws per hinge.

2. Align the holes of the mounting plate with holes in end panel or inner vertical panel indicated (2a). Use the appropriate hand screwdriver (not a powered screwdriver) to install the two (2) screws per mounting plate. This will help avoid any chipping (2b).



CAUTION: Make sure to use a hand screwdriver when moving a door from one location to another. This will help avoid chipping the hinge holes. Using a powered screwdriver could cause chipping of the hinge holes.

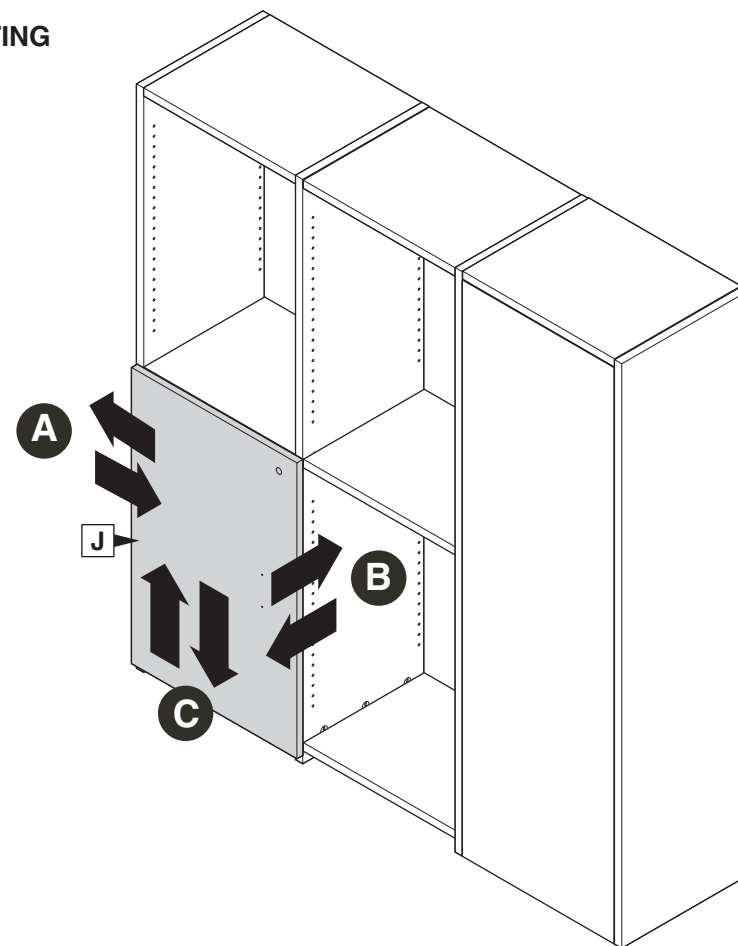
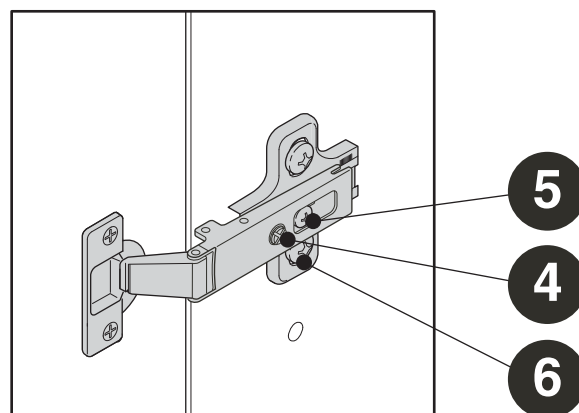
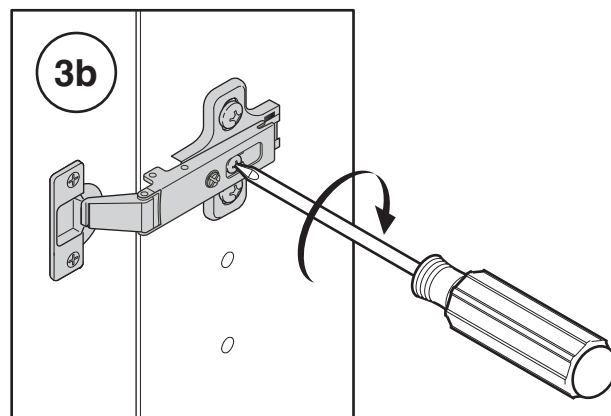
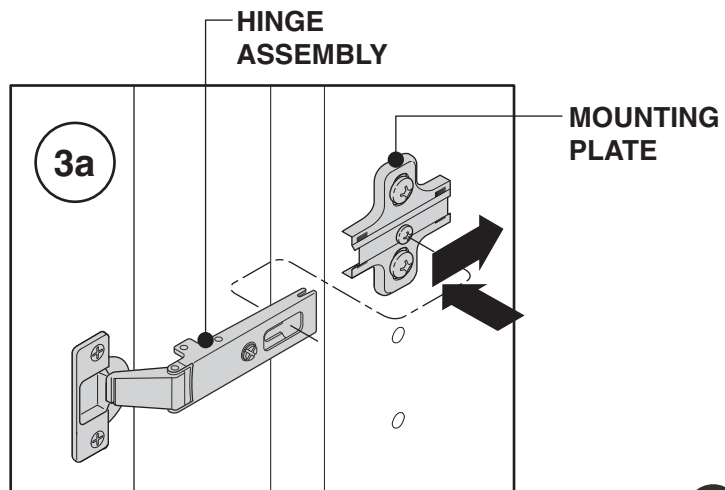
3. Engage the hinge assembly onto the mounting plate (3a). Tighten screw (3b).

Adjusting the Hinges

4. This screw adjusts the door in the HORIZONTAL or "A" direction.

5. This screw adjusts the door in the FRONT TO BACK (depth), or "B" direction.

6. This screw adjusts the door in the VERTICAL or "C" direction.

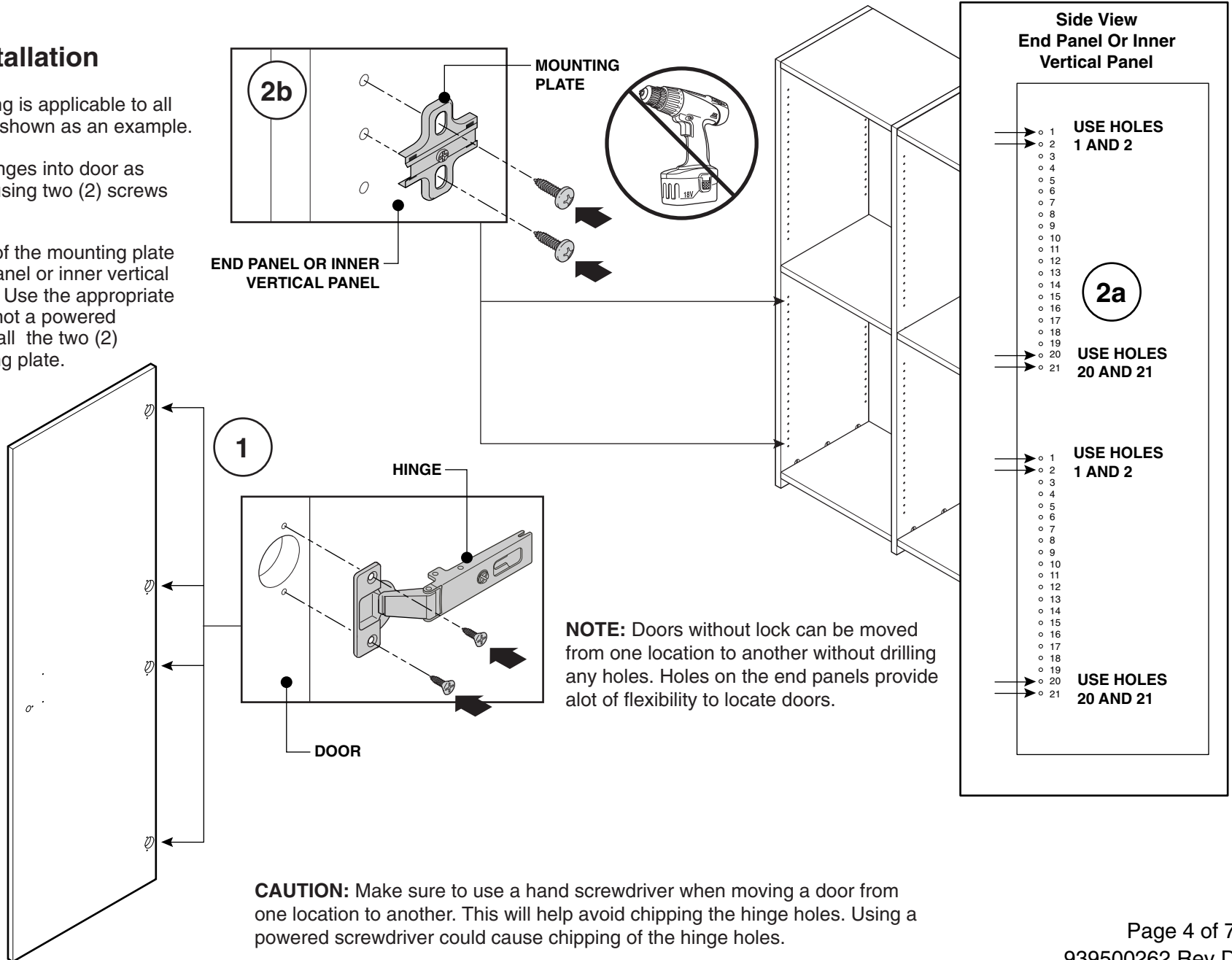


72" Door Installation

NOTE: The following is applicable to all scenarios. 3 unit is shown as an example.

1. Insert two (4) hinges into door as shown and attach using two (2) screws per hinge.

2. Align the holes of the mounting plate with holes in end panel or inner vertical panel indicated (2a). Use the appropriate hand screwdriver (not a powered screwdriver) to install the two (2) screws per mounting plate. This will help avoid any chipping (2b).



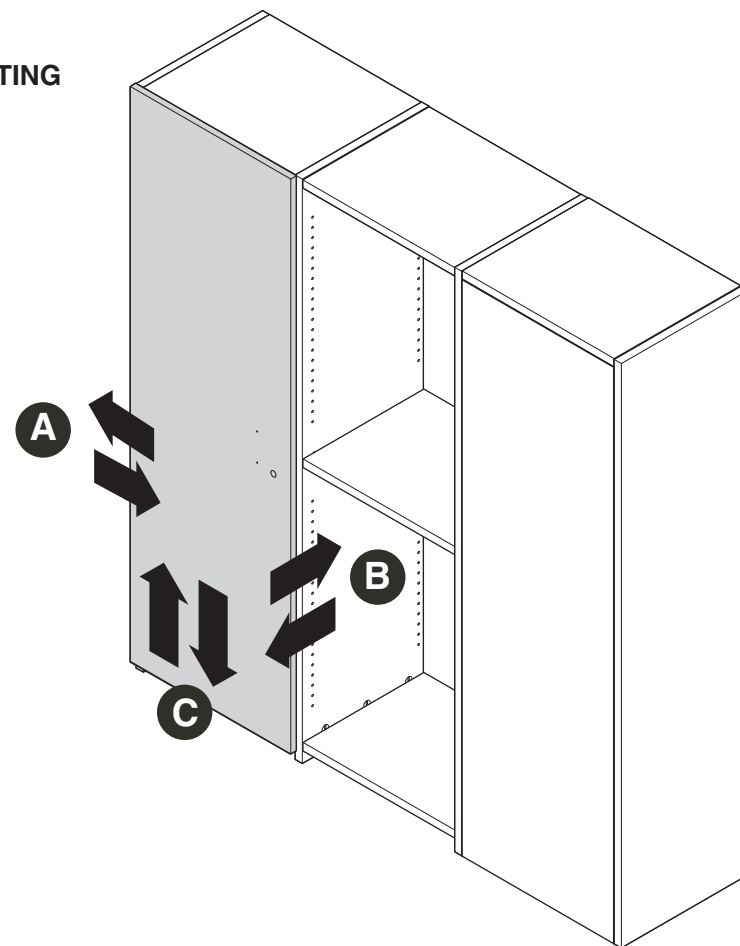
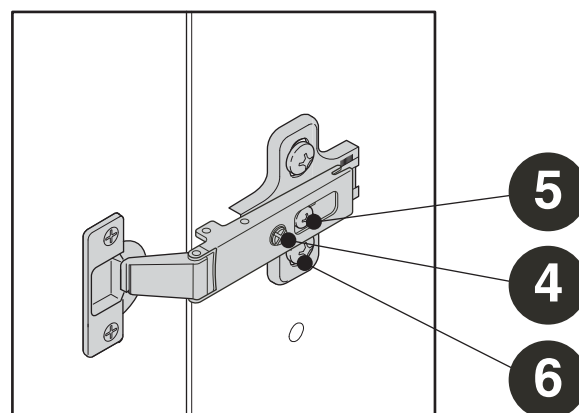
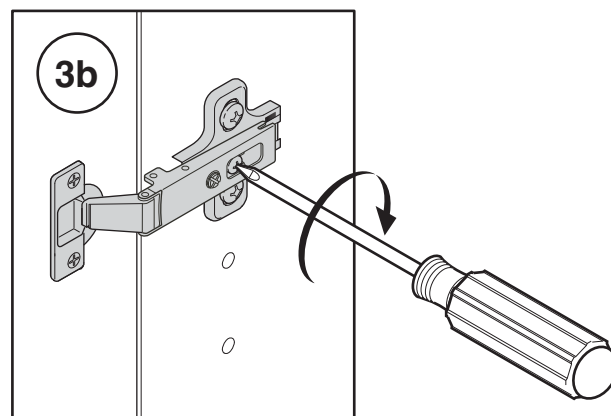
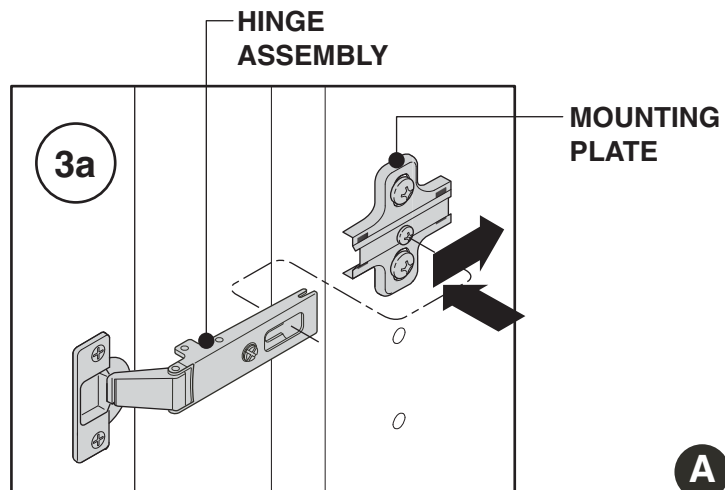
3. Engage the hinge assembly onto the mounting plate (3a). Tighten screw (3b).

Adjusting the Hinges

4. This screw adjusts the door in the HORIZONTAL or "A" direction.

5. This screw adjusts the door in the FRONT TO BACK (depth), or "B" direction.

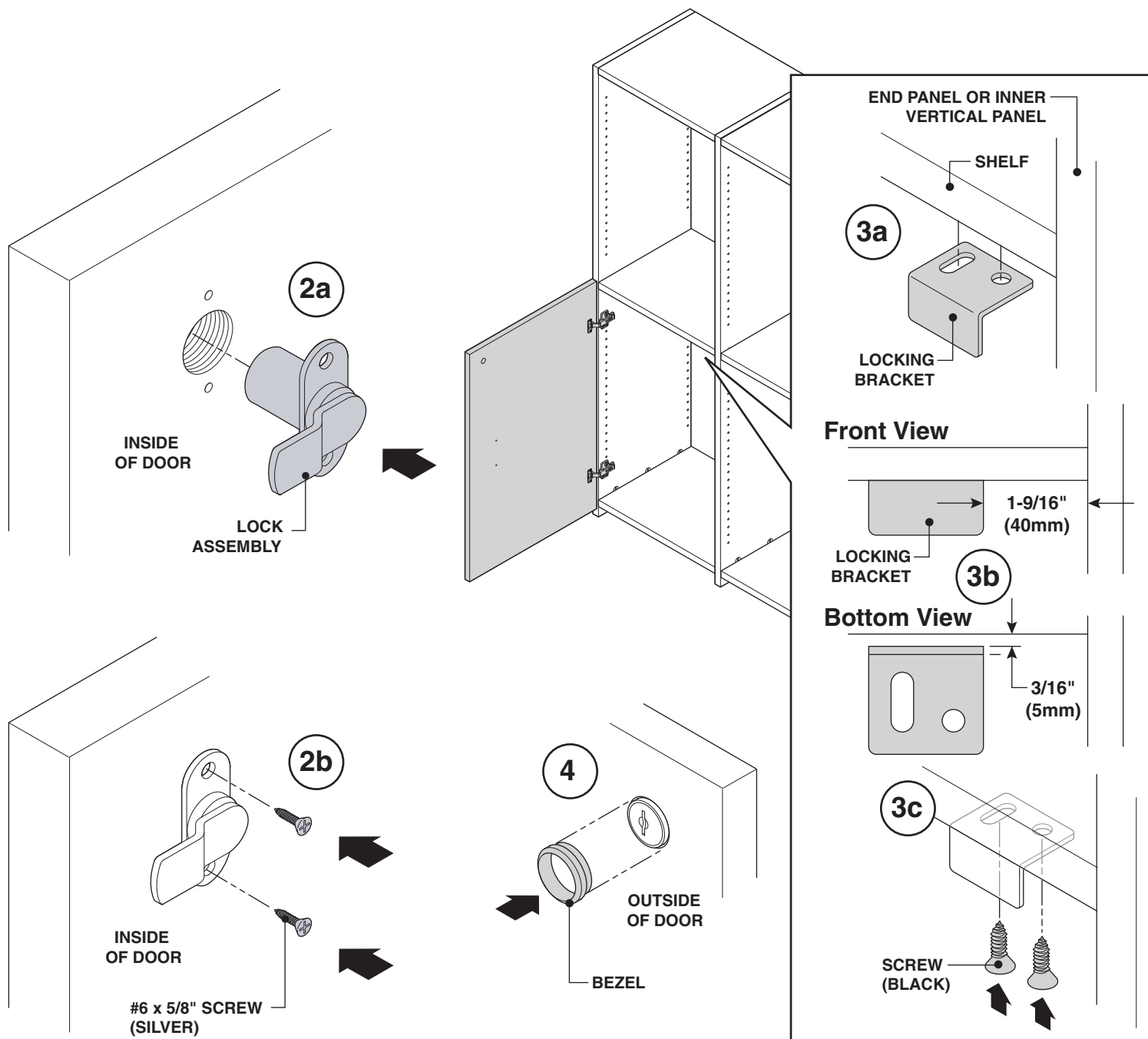
6. This screw adjusts the door in the VERTICAL or "C" direction.



Lock Installation

NOTE: The following is applicable to all scenarios. 3 unit is shown as an example along with a 36" door.

1. Open door.
2. Insert lock assembly into hole on inside of case (2a) and secure using two (2) #6 x 5/8" screws (silver) (2b).
3. Place the locking bracket onto the underside of the shelf (3a) and position 1-9/16" (40 mm) from the side of the end panel or the inner vertical panel and 3/16" (5mm) from the front of the shelf (3b). Secure using two (2) screws (black) (3c).
4. Close door. Insert bezel from the outside of the door.



Bar Pull Installation

NOTE: The following is applicable to all scenarios. 3 unit is shown as an example along with a 36" door.

1. Open door.
2. Align bar pull with holes in door.
3. Secure using two (2) screws.

