

### Components

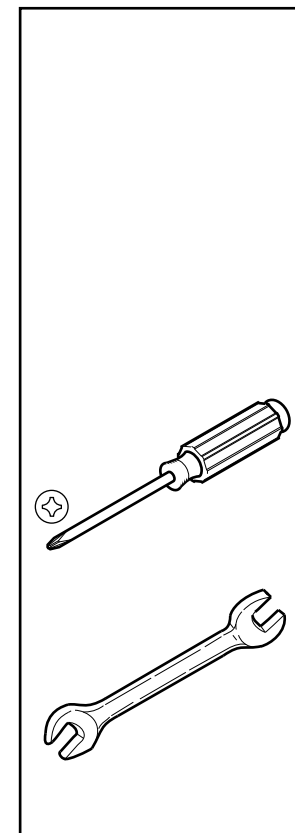
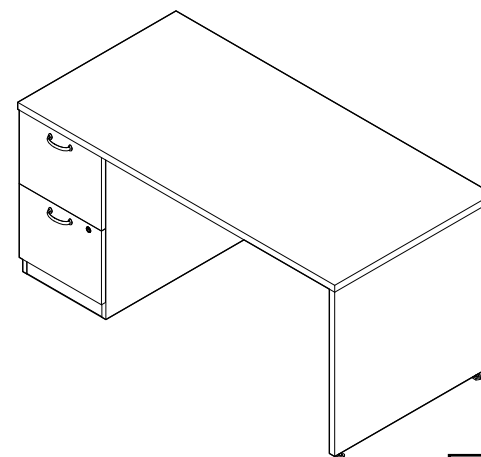
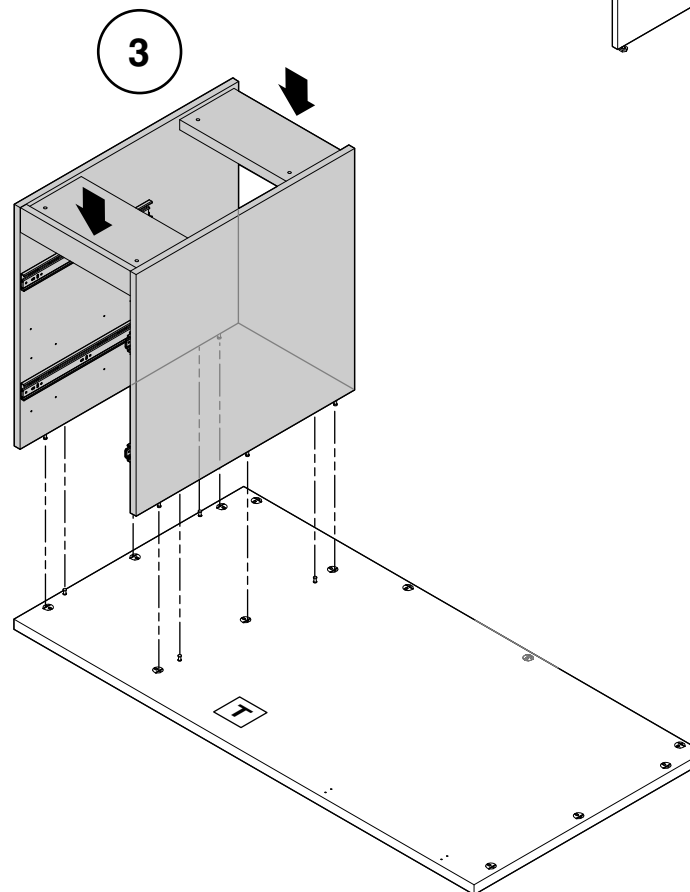
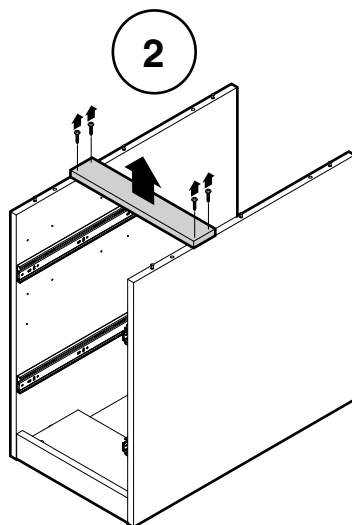
Letter	Description
E	Full End Panel
T	Top
I	Modesty Panel

**NOTE:** Assemble as close to assembled units final desired location to avoid moving a heavy unit.

**1.** Remove the drawers from the pedestal as shown on page 3.

**2.** Remove shipping strap from pedestal.

**3.** Lower the pedestal onto the underside of T (top). Make sure pins engage into cams.



If you have a problem, question, or request, call your local dealer, or Steelcase Line 1 at **888.STEELCASE** (888.783.3522) for immediate action by people who want to help you.

(Outside the U.S.A., Canada, Mexico, Puerto Rico, and the U.S. Virgin Islands, call: 1.616.247.2500)

Or visit our website: [www.steelcase.com](http://www.steelcase.com)

© 2012 Steelcase Inc.  
Grand Rapids, MI 49501  
U.S.A.

Printed in U.S.A.

## Components

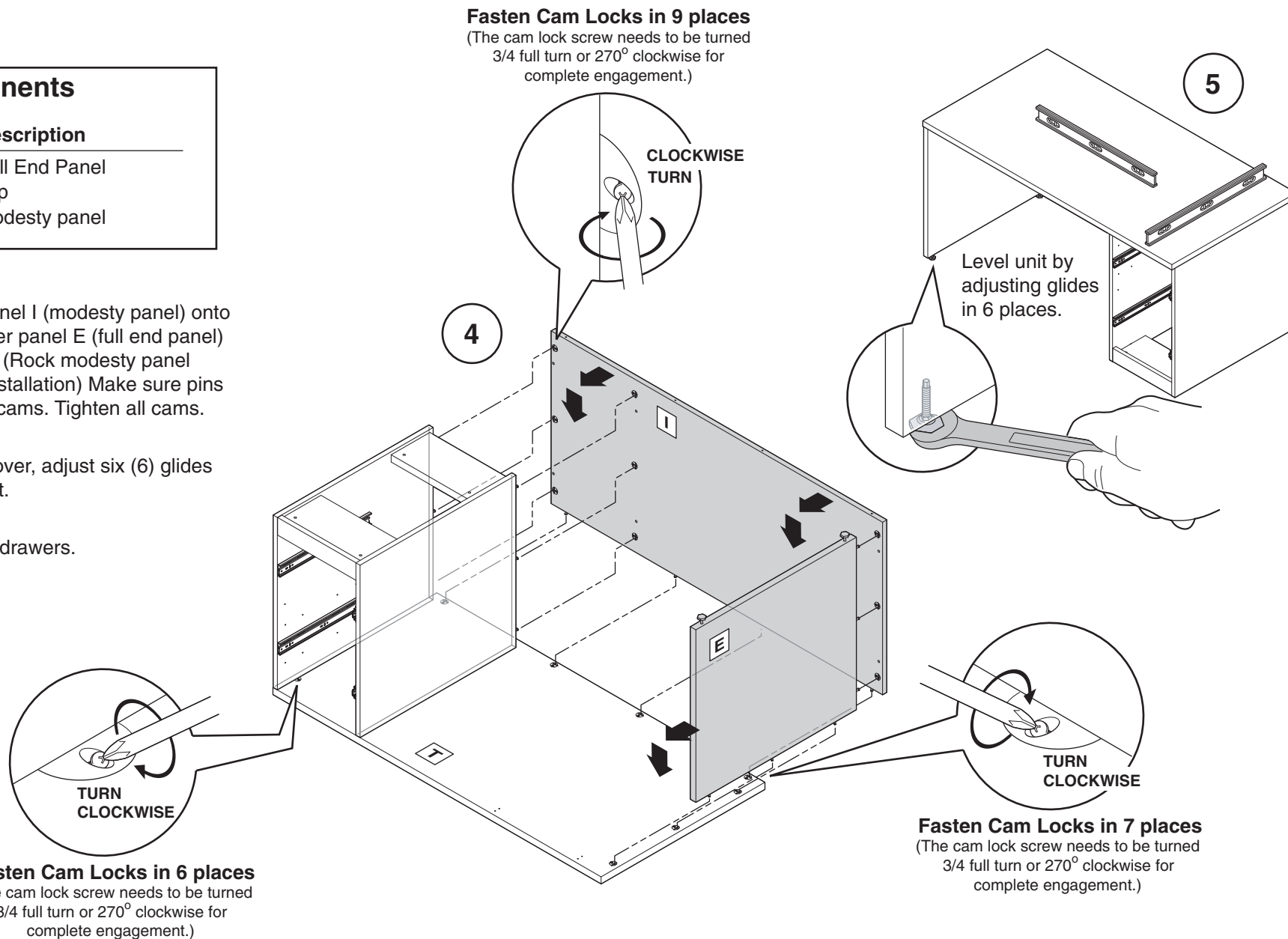
### Letter Description

E	Full End Panel
T	Top
I	Modesty panel

**4.** Lower panel I (modesty panel) onto the top. Lower panel E (full end panel) onto the top. (Rock modesty panel slightly for installation) Make sure pins engage into cams. Tighten all cams.

**5.** Flip unit over, adjust six (6) glides and level unit.

**6.** Reinstall drawers.

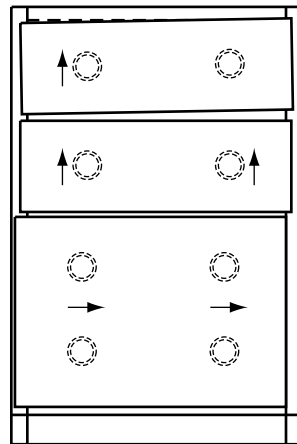
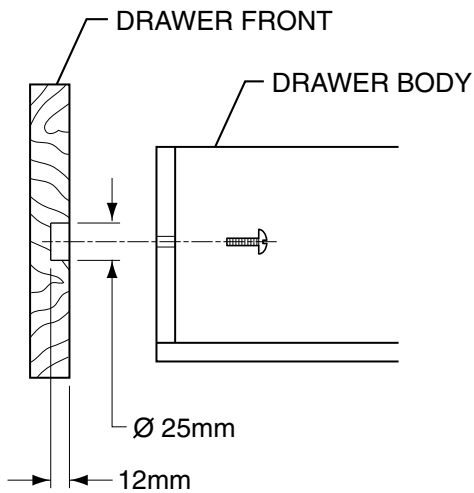
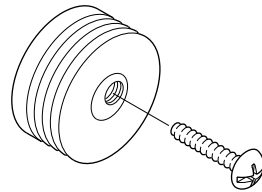


### DRAWER FRONT ADJUSTMENT

Leveler adjusts 1/8" in ANY direction.

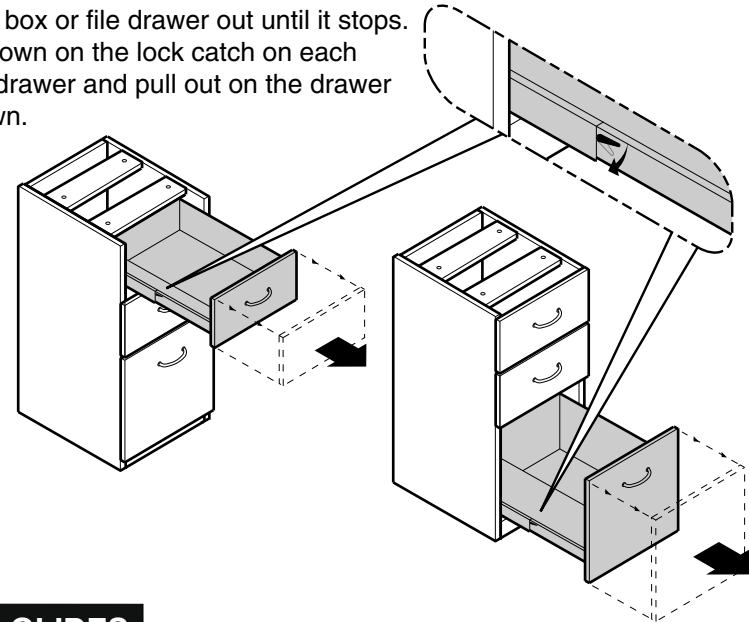
Remove two (2) or four (4) screws, that hold the drawer front to the drawer body.

Alignment is done simply by loosening the screw and retightening when alignment has been made.



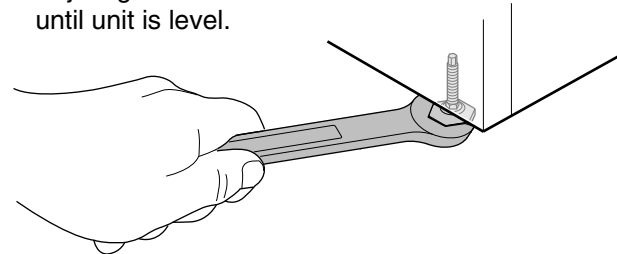
### REMOVE BOX AND FILE DRAWERS

Pull the box or file drawer out until it stops. Press down on the lock catch on each side of drawer and pull out on the drawer as shown.



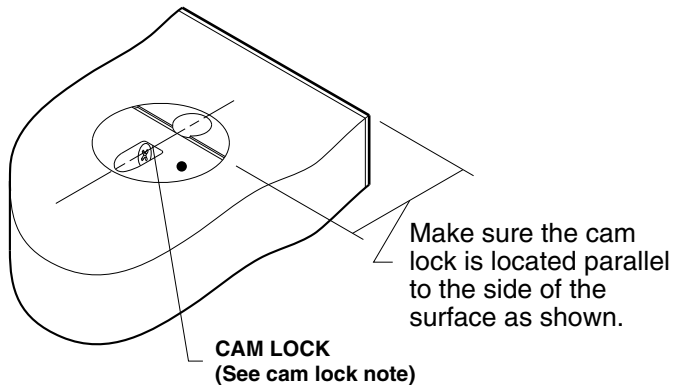
### LEVEL GLIDES

Adjust glides on bottom of unit until unit is level.



Apply stickers on all visible cam joint faces to cover the connector faces, after assembly.

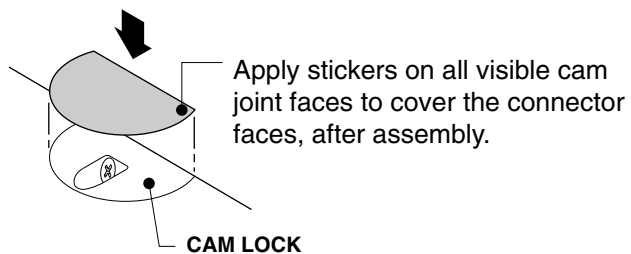
## (Tips for Proper Alignment of Parts)



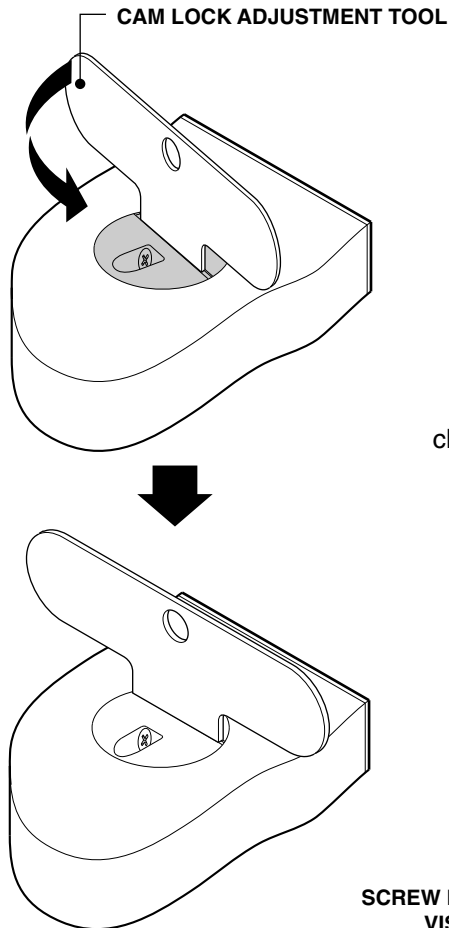
### CAM LOCK NOTE:

If cam lock is installed high on the surface, tap it down flush with the surface. If that doesn't work, replace part.

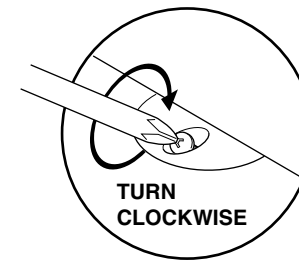
If cam lock is installed low into the surface, screw cam pin out to extend the length of the cam pin.



**NOTE:** When assembly has been **completed**, make sure to remove all of the E, B, I, ect. stickers from the surfaces of all the parts.

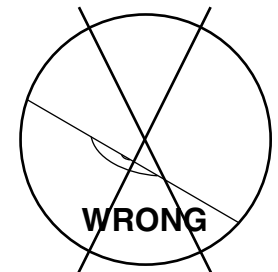


Use mallet, before tightening cam screws, to bring parts together and avoid light leaks.



### Fasten Cam Locks

(The cam lock screw needs to be turned 3/4 full turn or 270° clockwise for complete engagement.)



If the cam lock screw is not visible, you have installed the panel/shelf wrong and you need to turn the panel/shelf 180°.

**NOTE:** The cam pin is offset and needs to be installed on the shorter offset side. If the screw heads are not visible, turn the panel/shelf 180°.

