

Tandus Centiva

JHANE BARNES
CONSEQUENCE II

CONSEQUENCE II 03724 Color: Athena 43514
24" x 24" Random Installation



THE ULTIMATE
FLOORING EXPERIENCE

PRODUCT COORDINATES – SOFT SURFACE



POWERBOND



MODULAR

HAYWIRE



POWERBOND



MODULAR

MAELSTROM



POWERBOND



MODULAR

AWRY



POWERBOND



MODULAR

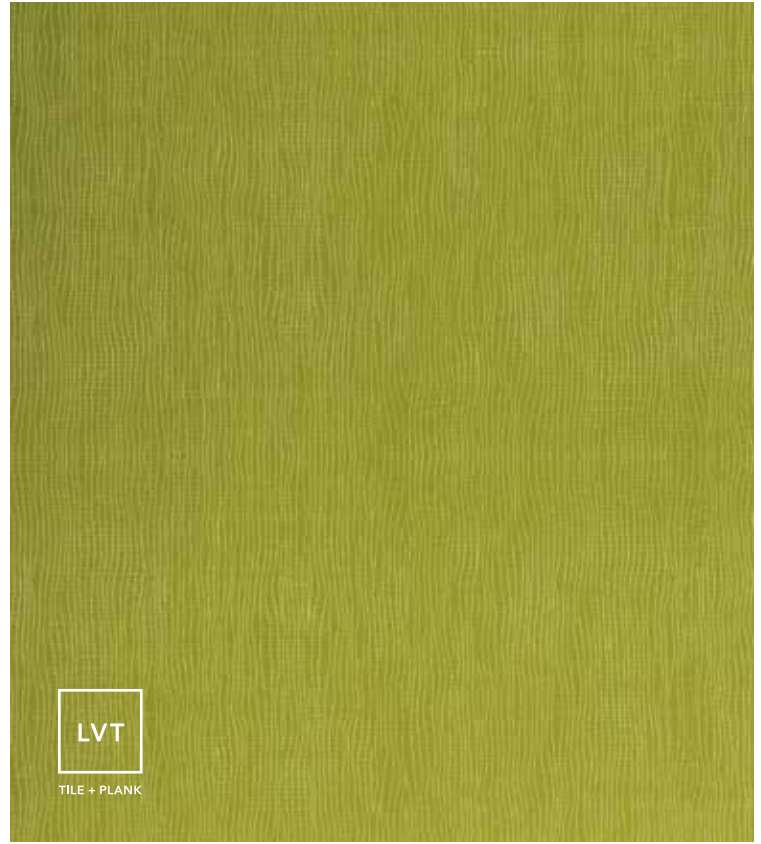
LONGITUDE

PRODUCT COORDINATES – LVT



VENUE ABSTRACT, CONCRETE MORTAR

UVA 5131



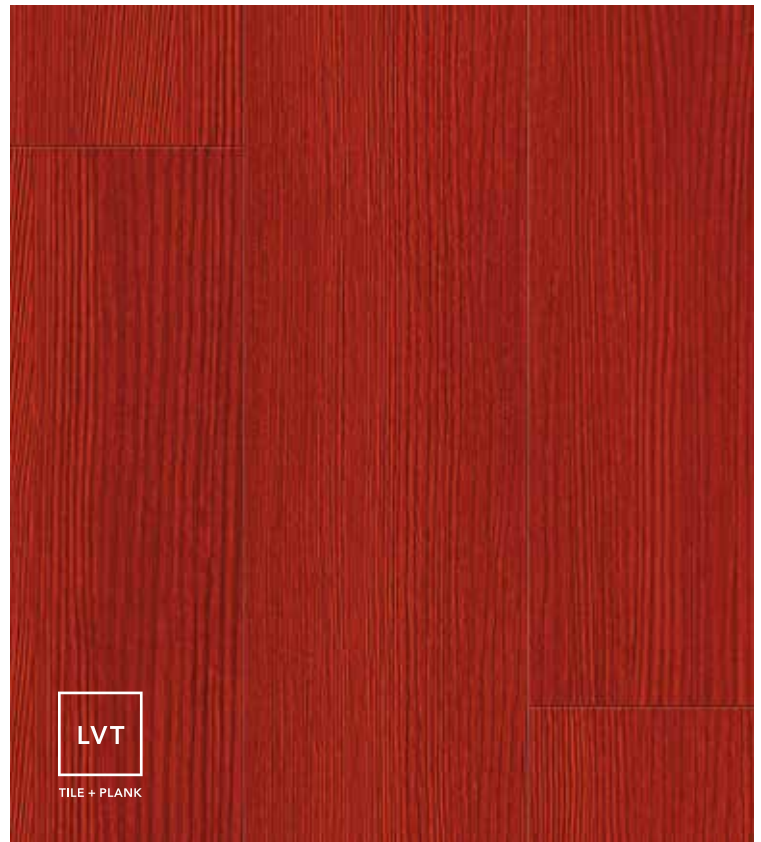
SUBSTRATE, HARLEQUIN

CSU 0955



VENUE WOOD, TAOS

UVP 3605



NUGRAIN, VERMILIAN

CNU 3714

THE ULTIMATE FLOORING EXPERIENCE

Tandus Centiva, a Tarkett company, creates innovative floorcovering solutions through our unique line of Powerbond®, Modular, Broadloom, Woven, LVT and MetalEdge transition products. Each of our product platforms offer coordinated styles, extensive color ranges and a variety of patterns and textures that enhance the appearance of any commercial environment. Tandus Centiva products are also designed to coordinate with a variety of Johnsonite wall base and finishing accessories, providing the Ultimate Flooring Experience across the Tarkett family of brands.



PRODUCT COORDINATES – TRANSITION: METALEGE COLLECTION

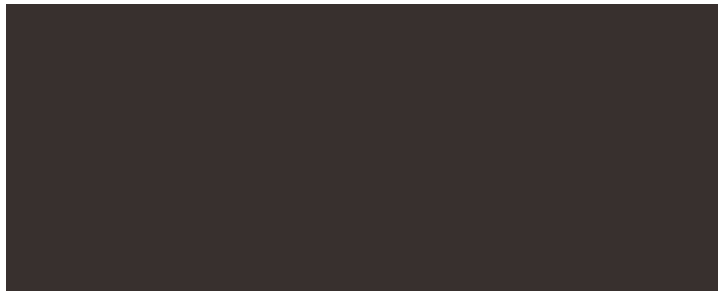
MetalEdge provides a transition solution and finish detail for any commercial space. It is offered in three aesthetically pleasing and tastefully refined systems, each engineered and colored to work with a vast array of Tandus Centiva soft and hard surface product platforms. Please contact your Tandus Centiva account executive for details.



STEEL 00179*



IRONSTONE 00178*



BLACK PEARL 00082*



BRASS 00176*

**These colors are metallic and may not be accurately represented. Please contact your Tandus Centiva account executive to order samples, 800.248.2878.*

CONSTRUCTION OPTIONS

All Tandus Centiva Powerbond® and Modular options are 100% closed-loop recyclable through our ReStart® program and do not contain pesticides (antimicrobials) as part of our reduce chemical initiatives. We ensure 100% of the flooring samples returned are recycled or reused, guaranteed.

	Backing Systems	Warranty	Rollability	100% Closed-loop Recyclable	Seams	Moisture Management	Installation	Recycled Content
Powerbond	Powerbond® Cushion	lifetime LIMITED	GOOD	RECYCLABLE	IMPERMEABLE	IMPACT 0 @ 10,000	PEEL & STICK DIRECT GLUE	RECYCLED CONTENT
	Powerbond® Medfloor®	lifetime LIMITED	EXCELLENT	RECYCLABLE	IMPERMEABLE	IMPACT 0 @ 10,000	PEEL & STICK DIRECT GLUE	RECYCLED CONTENT
	Powerbond® ethos® Cushion	lifetime LIMITED	EXCELLENT	RECYCLABLE	IMPERMEABLE	IMPACT 0 @ 10,000	PEEL & STICK DIRECT GLUE	RECYCLED CONTENT
Modular	ER3®	lifetime LIMITED	EXCELLENT	RECYCLABLE			DIRECT GLUE	RECYCLED CONTENT
	ethos®	lifetime LIMITED	EXCELLENT	RECYCLABLE			TANDUS TAPE+ DIRECT GLUE	RECYCLED CONTENT
	Flex-Aire®	lifetime LIMITED	GOOD	RECYCLABLE			TANDUS TAPE+ PEEL & STICK DIRECT GLUE	RECYCLED CONTENT

*Flex-Aire also available as a 6' rolled good

= Rollability is the ability to move (or roll) pieces of furniture such as chairs or beds on flooring

= Moisture penetration by impact at seams @10psi: No penetration after 10,000 impacts

= Impermeable seams



ReStart® includes Tandus Centiva’s third-party certified reclamation and recycling program that reclaims and recycles post consumer flooring, installation waste, samples and portfolios. To initiate ReStart, contact customer service at 800-248-2878. ReStart is available for all Tarkett products and may be initiated by contacting your Tarkett representative.



	Product	Recycled Content	Min. Post-Consumer Recycled Content	NSF 140 Rating
CERTIFIED	ER3® Modular	45-67%	20%	Platinum
CERTIFIED	Powerbond® ethos® Cushion	37-62%	37%	Platinum
CERTIFIED	ethos® Modular	26-51%	26%	Platinum
CERTIFIED	Powerbond® Cushion	7-32%	7%	Gold
CERTIFIED	Powerbond® Medfloor®	7-31%	7%	
CERTIFIED	Flex-Aire® Cushion Modular	21-40%	4%	Gold

Recycled content varies by product style and has been certified by Scientific Certification Systems (SCS) Global Services.

For a detailed analysis of how Tandus Centiva products perform in environmental rating systems such as LEED, please visit our ecoScorecard at tandus-centiva.ourgreenproducts.com.

All vinyl products, when recovered, are 100% recyclable in Tandus Centiva’s closed-loop recycling process.



Tandus Centiva offers Environmental Product Declarations (EPD) for the following: ethos Modular, ER3 Modular, Flex-Aire Cushion Modular, Powerbond ethos Cushion, Powerbond Cushion and Powerbond Medfloor.

Tandus Centiva

**CONSEQUENCE II
03724**



Coordinate Group: Textures

Size: Powerbond: 6 feet (1.8 m)
Modular: 24" x 24"
(60.9 cm x 60.9 cm)

Surface Texture: Stratatec® Patterned Loop

Yarn Content: Dynex® Nylon

Dye Method: 75% Solution Dyed / 25% Yarn Dyed

Pile Height Average: 0.187" (4.7 mm)

Pattern Match: Not Required

**Powerbond
Construction Options:** Powerbond® Cushion, Powerbond®
Medfloor®, Powerbond® ethos® Cushion

**Modular
Construction Options:** ER3® Modular, Flex-Aire® Cushion
Modular, ethos® Modular

**Modular
Installation Options:** 24" X 24":



Information subject to change. For samples, warranties and the most up-to-date specifications, visit tandus-centiva.com or call 800.248.2878.

Photos may not accurately depict color. Please order samples for exact product color.