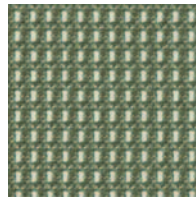




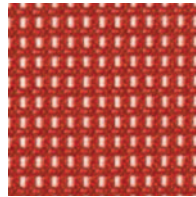
GRASS GREEN  
AMGG



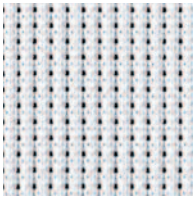
CHAMPAGNE  
AMCM



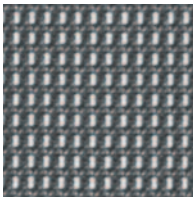
GRASS GREEN  
AMGG



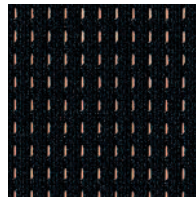
POPPY RED  
AMPR



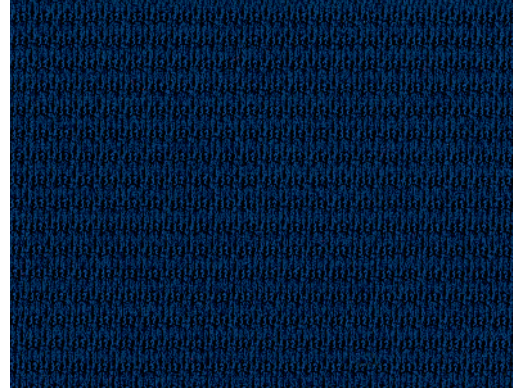
WHITE  
AMWH



GREY  
AMGR



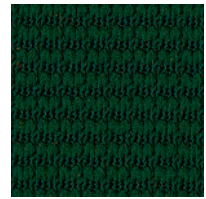
BLACK  
AMBL



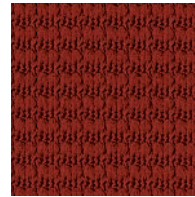
BLUE LAGOON  
A1BN



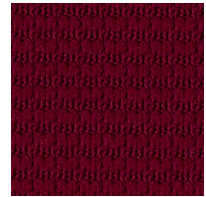
MUSTARD SEED  
A1MS



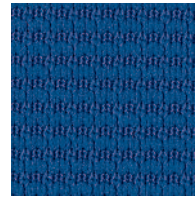
FOREST  
A1FS



RUSSET  
A1RS



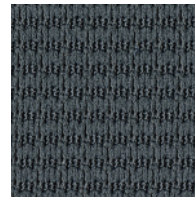
MERLOT  
A1MT



PERIWINKLE  
A1PW



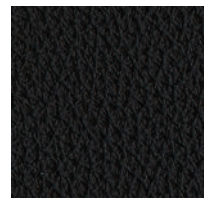
BLUE LAGOON  
A1BN



GUNMETAL  
A1GM








MIDNIGHT  
A1MN



BLACK LEATHER  
A1LI

## ■ Specification Information

Description	Altus
Grade	A1
Content	Fabric – 100% Polyester Mesh – 100% Polyester Leather – 100% Genuine Leather
Repeat	None
Width	Fabric and Leather – 54" Mesh – 18"
Weight	Fabric and Mesh – 14.8+/- 1.0 oz./Linear Yard
Fabric Treatment	None
Performance	
 Abrasion	100,000 double rubs. Abrasion resistance is the surface wear of a fabric caused by rubbing and contact with another fabric
 Physical Properties	Passes Brush Pill ASTM D3511. Class 3 minimum. Pilling is the formation of fuzzy balls of fiber on the surface of a fabric that remain attached to the fabric. Passes Breaking Strength ASTM D5034. 50 lb. min. in warp and weft. Breaking strength is the measurement of stress exerted to pull a fabric apart under tension.
 Colorfastness to Wet and Dry Crocking	Passes AATCC 8. Dry Crocking, Class 4 minimum. Wet Crocking Class 3 minimum. Crocking is the transfer of dye from the surface of a dyed or printed fabric onto another surface by rubbing.
 Colorfastness to Light	Passes AATCC 16 Option 1 or 3: Class 4 minimum at 40 hours. Colorfastness to light refers to a material's degree of resistance to the fading effect of light.
 Flame Resistance	Passes California Technical Bulletin #117 Section E – Class 1. Flame resistance is the measurement of a fabric's performance when it is exposed to specific sources of ignition.

Colors may vary slightly between dye lots.

KI and Furnishing Knowledge are registered trademarks of Krueger International, Inc.

© 2013 KI Litho in USA KI-32489R1/HC/IP/0413

Printed on FSC® certified paper using only vegetable-based inks, including metallics. Please recycle.

