

# Bohemia

## Porcelain Stone®

### Available Colors



**BHM01** ▶ Free Spirit



**BHM02** ▶ Drifter



**BHM03** ▶ Artist



**BHM04** ▶ Vagabond

### Features and Benefits

- Crossville's latest line of fabric-finish tile makes an impression in boho-chic style.
- Available in 12 x24 and 24 x24 – with bullnose, covebase, and 2 mosaic options suitable for shower floors
- All sizes are rectified and modular with a minimum of 3mm grout joint
- Cross-Sheen finish for easy cleaning
- Made in the USA





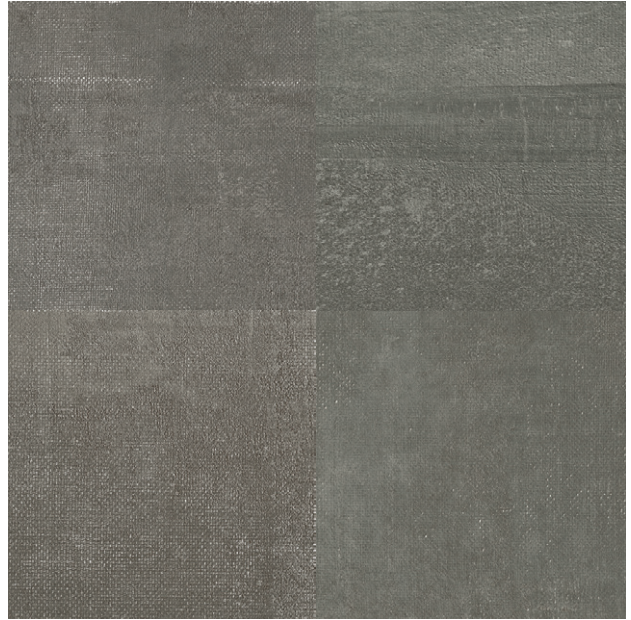
# Bohemia

## Porcelain Stone®

### Available Colors



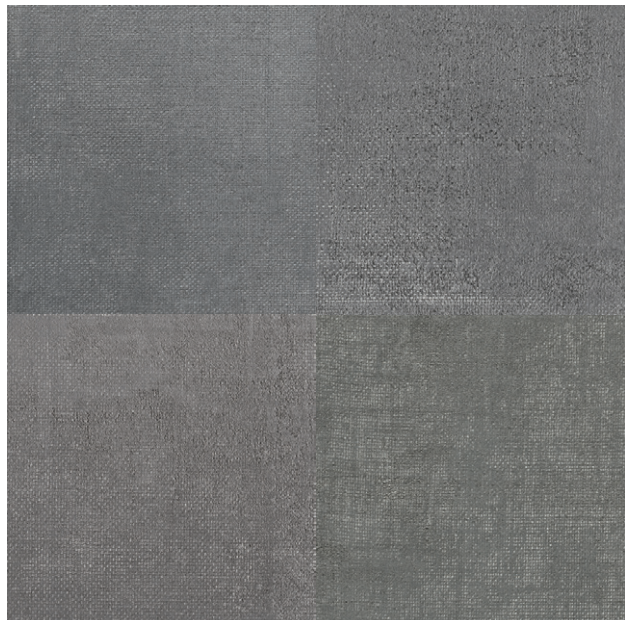
**BHM05** ▶ Tinker



**BHM06** ▶ Wanderer



**BHM07** ▶ Rebel



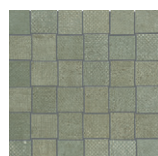
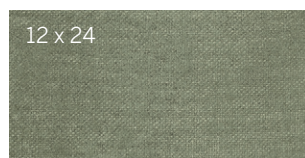
**BHM08** ▶ Beatnik



# Bohemia

## Porcelain Stone®

### Sizes (Shown in BHM07)



### Get Planked!

Our Porcelain Stone® products are available in popular plank shapes with no minimum order and quick fulfillment.

See website for more details and sizes.



### Sizes & Finishes

#### Field Tile

Available in all colors

Nominal (in)	Actual (mm)	Thickness (mm)	Finish
12 x 24	297 x 597	10.5	UPS
24 x 24	597 x 597	10.5	UPS

Crossville recommends a grout joint of 3mm

Actual measurements stated in inches indicate tile is calibrated (non-rectified).

Actual measurements stated in mm indicate tile is rectified.

#### Mosaics

Available in all colors

Nominal (in)	Actual (in)	Thickness (mm)	Finish
3 x 3 Mosaic*	297 x 297	10.5	UPS
Basketweave Mosaic*	301.3 x 301.3	10.5	UPS

\*Mounted on 12 x 12 sheet

#### Coordinating Trim

Nominal (mm)	Actual (mm)	Thickness (mm)	Finish
4 x 24 Single Bullnose	96 x 597	10.5	UPS
6 x 12 Cove Base	150 x 297	10	UPS



4 x 24 Bullnose



6 x 12 Cove Base

### Product Performance

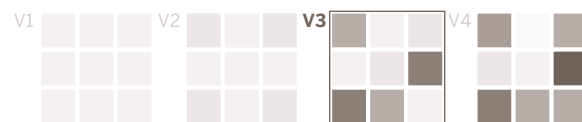
Breaking Strength	>500 lbf	ASTM C648
Bond Strength	>200 psi	ASTM C482
Chemical Resistance	Unaffected	ASTM C650
Frost Resistance	Resistant	ASTM C1026
Water Absorption	<0.20%	ASTM C373
Scratch Hardness	7	Mohs Scale

### Wet Dynamic Coefficient of Friction Range

UPS	0.42 - 0.52	AcuTest <sup>sm</sup>
-----	-------------	-----------------------

### Shade & Texture Index

Bohemia has a shade variation of V3.



V1 Uniform appearance  
V2 Slight Variation  
**V3 Moderate Variation**  
V4 Substantial Variation

This porcelain tile product is produced with a V3 variation. Expect that the amount of color and texture on each piece may vary significantly. Inspect the product upon delivery and for best results, blend tile from several cartons during installation.





# Bohemia

## Crossville, Inc.

PO Box 1168  
Crossville, TN  
38557

**Phone** 931.484.2110  
**Fax** 931.456.2956  
**E-Mail** [Crossc@CrossvilleInc.com](mailto:Crossc@CrossvilleInc.com)  
**Web** [CrossvilleInc.com](http://CrossvilleInc.com)

### Recommended Use

Bohemia is recommended for interior floors, walls, counter tops and exterior walls in both residential and commercial applications. If offset pattern is required for tiles 18 inches or longer, Crossville® recommends an offset of not greater than 33%. If an offset greater than 33% is specified, specifier and owner must approve mock-up and lippage. See [CrossvilleInc.com](http://CrossvilleInc.com) for detailed installation instructions.

### Care and Maintenance

Regular cleaning is the best way to keep Bohemia tile looking good for years to come. Use clean, hot water (combined with a household cleaner for more aggressive cleaning). Rinse thoroughly and dry with a soft cloth. No waxes are needed. More Information regarding the care and maintenance of Crossville® products is available at [CrossvilleInc.com](http://CrossvilleInc.com).



**BHM075** ▶ Rebel 24 x 24 UPS

### Hydrotect™

Our porcelain tiles are available with Hydrotect™. Crossville's revolutionary invisible coating harnesses the power of light, water, and oxygen to create the best defense against dirt and pollution. Whether indoors or out, floors and walls stay cleaner, providing a superior experience in any space. For complete details check our website at [CrossvilleInc.com](http://CrossvilleInc.com).



### EcoCycle Tile Process™

Bohemia contains a minimum of 4 percent pre-consumer recycled content and is manufactured by Crossville® using processes that recycle nearly 12 million pounds of previously discarded filtrate and fired tile waste. In addition to its own fired waste recycling, Crossville also accepts and recycles reclaimed, previously installed tile through its Tile Take-Back™ Program. For more information, visit [CrossvilleInc.com/green](http://CrossvilleInc.com/green).

### Green SquaredSM Certified

Crossville® has earned Green SquaredSM certification from the Tile Council of North America (TCNA) for its entire U.S.-manufactured porcelain product line-up, as well as its manufacturing processes. The company is among the first ever recipients of this certification standard for the tile industry. TCNA developed the Green Squared certification under American National Standards Institute (ANSI) process. The multi-attribute program (ANSI A138.1) scores products in five categories of performance: product characteristics, manufacturing, corporate governance, innovation and end-of-life. Crossville's certified products and processes received stringent evaluation from Scientific Certification Systems (SCS), the green building industry's longest standing third-party certifier.

### National Accounts

For over 20 years we have been offering Porcelain tile to commercial customers at National Accounts pricing programs with special discounts. The National Accounts department provides materials forecasting, sales support and samples.

### Exterior Cladding

Crossville's Porcelain Stone® Exterior Cladding Systems are suitable for virtually any conventional masonry application. When used in conjunction with our exterior cladding systems, Crossville's Porcelain Stone offers clear advantages: decreased construction costs, less site disturbance, low-to-zero maintenance after installation, accelerated construction schedules and greater strength than traditional masonry.

### Our Warranty

Crossville Inc. guarantees that its products will meet or exceed the performance specifications outlined in ANSI A137.1-2012 and in the performance data section of the Crossville, Inc. general product catalog. For complete details check our website at [CrossvilleInc.com](http://CrossvilleInc.com).

### ▶▶ Crossville® Sample Express

**Sample fulfillment & Help Line**  
[Samples@CrossvilleInc.com](mailto:Samples@CrossvilleInc.com)  
1 800 221.9093

**Loose Samples for**  
Architects & Designers

**Loose Tile Samples**  
Sizes may vary depending on product series  
Max. of 4 large field tile per order

**Replacement Chips for PSS Rack**  
Max. of 5, 2 x 2 chips per color

**Standard Shipping**  
UPS Ground

*Information listed here is subject to change.  
Please refer to [CrossvilleInc.com](http://CrossvilleInc.com) for the latest, most accurate information.*

### Trade Organizations



### Environmentally Aware

