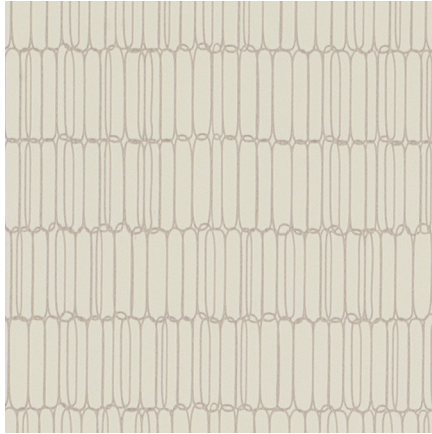




PALLAS



ECRU
27.168.011

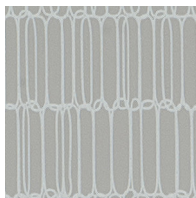
APPLICATION
Upholstery

CONTENT/SUSTAINABILITY
100% Biodegradable
Polyurethane Surface

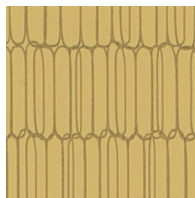
WIDTH
54 inches

PERFORMANCE
Silver Ion Antimicrobial
Technology,
Bleach Cleanable

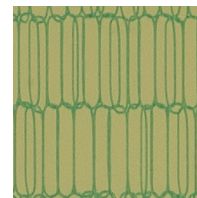
ABRASION
150,000 Double Rubs



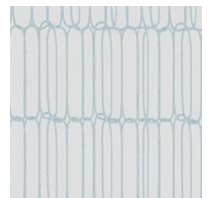
PUMICE
27.168.032



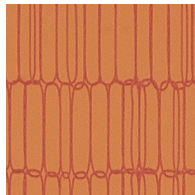
BUTTER
27.168.059



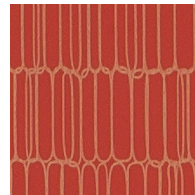
CITRINE
27.168.085



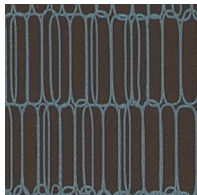
AQUA
27.168.022



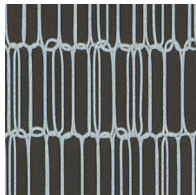
MANGO
27.168.069



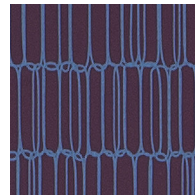
POPPY
27.168.078



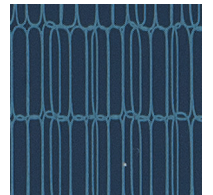
ESPRESSO
27.168.111



CARBON
27.168.122



BERRY
27.168.097



MIDNIGHT
27.168.104





UNRAVELED

Entwined™ Collection

SPECIFICATION INFORMATION

PATTERN

UNRAVELED - ENTWINED™ COLLECTION

Application	Upholstery
Content	100% Biodegradable Polyurethane Surface
Repeat	None
Width	54"
Weight	24 oz. / Linear Yard
Finish/Backing	Silver Ion Antimicrobial Technology
Cleaning Code*	WS, Bleach Cleanable
Warranty	Standard (3yr)
Performance ¹	    
Flammability	NFPA 260, TB 117-2013
Abrasion**	150,000 Double Rubs (Wyzenbeek/Wirescreen)

Colors may vary slightly between dye lots. This card may show discontinued colorways. For current color availability, please refer to pallastextiles.com or call 1-800-472-5527.
 *For specific cleaning instructions, visit pallastextiles.com/cleaning
 **Multiple factors affect fabric durability and appearance retention, including end-user application and proper maintenance. Wyzenbeek results above 100,000 double rubs have not been shown to be a reliable indicator of increased fabric lifespan.

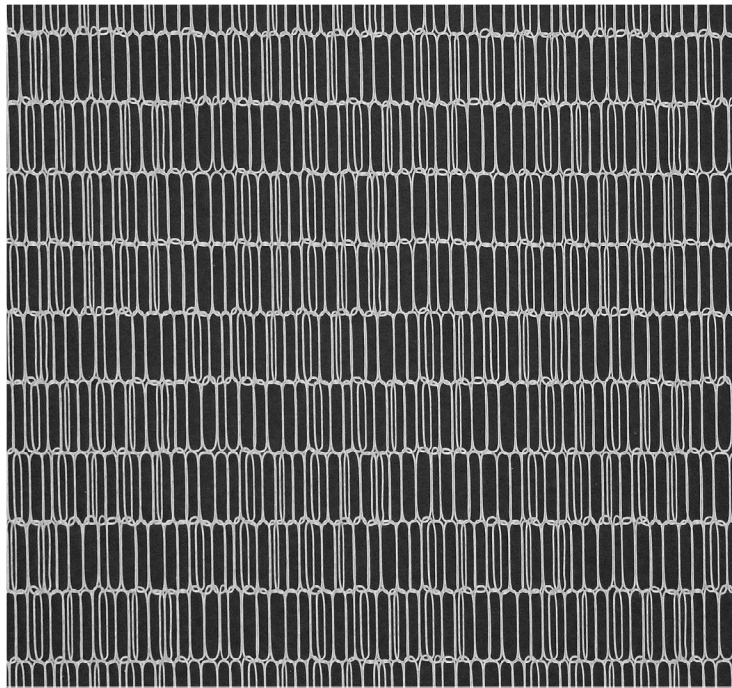
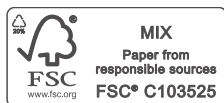


Photo for overall pattern effect only.



Printed on FSC® certified paper, using only vegetable-based inks, including metallics. Please recycle.

PALLAS

Pallas Textiles • 1330 Bellevue Street • P. O. Box 8100 • Green Bay, WI 54308-8100 • 1-800-472-5527 • www.pallastextiles.com
 Pallas is a registered trademark of Krueger International, Inc.® 2017 KI All Rights Reserved. Litho in USA. P-2009-32R5
 *ACT® Registered Certification Marks