



COLORSPEC™ STAIR TREADS



AGAVE
867



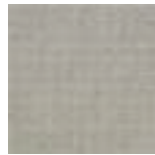
ALPINE GLOW
879



CANYON
862



FLINT
875



FOG
874



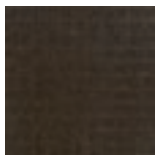
GINGER FIELD
863



ICE FIELD
876



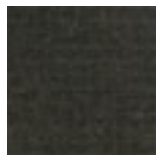
JASPER
865



JAVA
870



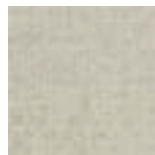
LAGOON
878



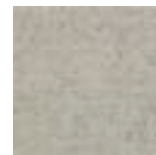
MIDNIGHT MOON
872



NECTAR
864



SAGUARO
873



SAND DOLLAR
869



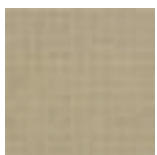
SEDUM
866



SHADOW GRAY
984



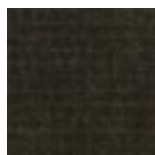
STORM
971



STRAW
860



SUNDEW
868



TERRA PRETA
871



THATCH
861


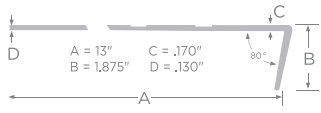
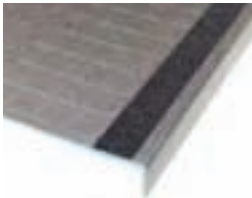
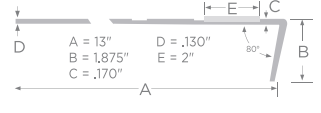
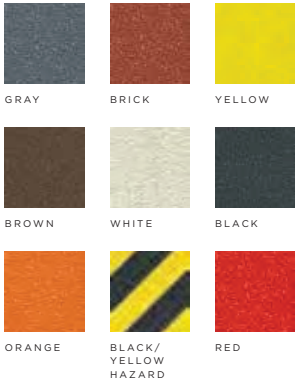

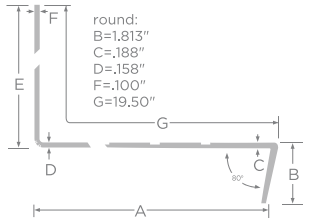

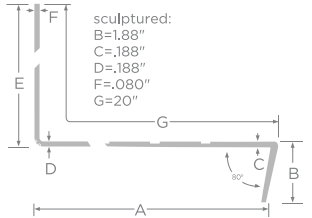


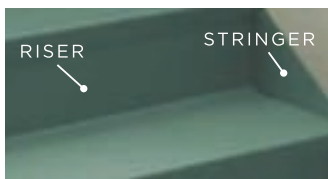
WATERFALL
877

Construction: Thermoset Vulcanized Rubber - Type TS
 Size: Available in 4', 5', and 6' lengths
 Profiles: Square or Sculptured. Also Sculptured ConnectStep One-Piece Treads and Risers.
 Overall Thickness: 1/8" (3.2 mm)
 Certifications: FloorScore
 Warranty: Limited 5 Year Stair Nose, Limited 10 Year Wear, Limited 10 Year Commercial

The superior rubber formulation offers a slip-resistant surface, while preserving design from scuffing, gouging and abrasions. A vinyl alternative product, our rubber has a natural luster that requires no waxing or stripping. Choose from square or sculptured Connect Step One-Piece treads and risers.

STAIR TREADS

PRODUCT	PROFILE	PROFILE	DESCRIPTION
<p>Square Profile, Square Nose</p>			<p>Superior Rubber Formulation</p> <ul style="list-style-type: none"> • Superior indentation resistance, color retention and slip-resistance • Superior scratch-resistance due to low clay and high pigment content • Quieter underfoot <p>Built-In, Long Lasting Migrating Wax</p> <ul style="list-style-type: none"> • No wax required, low maintenance option • Self-waxing feature for superior appearance retention • Lower life cycle costs <p>Superior Profile Design</p> <ul style="list-style-type: none"> • Profile design allows for enhanced cleanability
<p>Square Profile, Square Nose, Visually Impaired</p>			
<p>ConnectStep Round Profile</p>			<p>All Visually Impaired Stair Treads meet the California Disabled Access regulations Title 24 for the Visually Impaired when used with contrasting strip color.</p> <p>Note: Smooth rubber contrasting strips available upon request.</p> <p>Superior Rubber Formulation</p> <ul style="list-style-type: none"> • Superior indentation resistance, color retention and slip-resistance • Superior scratch-resistance due to low clay and high pigment content • Quieter underfoot
<p>ConnectStep Sculptured Profile</p>			<p>Built-In, Long Lasting Migrating Wax</p> <ul style="list-style-type: none"> • No wax required, low maintenance option • Self-waxing feature for superior appearance retention • Lower life cycle costs <p>Superior Profile Design</p> <ul style="list-style-type: none"> • Profile design allows for enhanced cleanability



- Riser**
- Rubber Type TS
 - Thickness: 1/8"
 - Lengths: 4', 5', 6'
 - Height: 7" coved

- Stringer**
- Rubber Type TS
 - Thickness: 1/8"
 - Lengths: 12" x 36" slabs