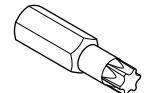
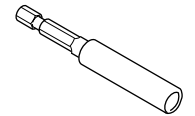
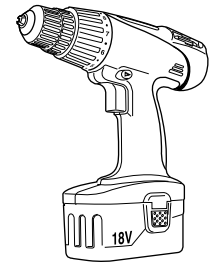
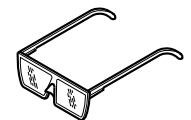
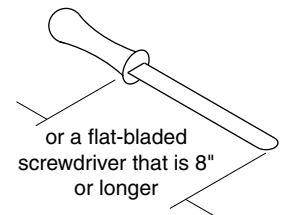


482 Amia™ Chair - Arm or Arm Cap Replacement



Torx T-20 & T25

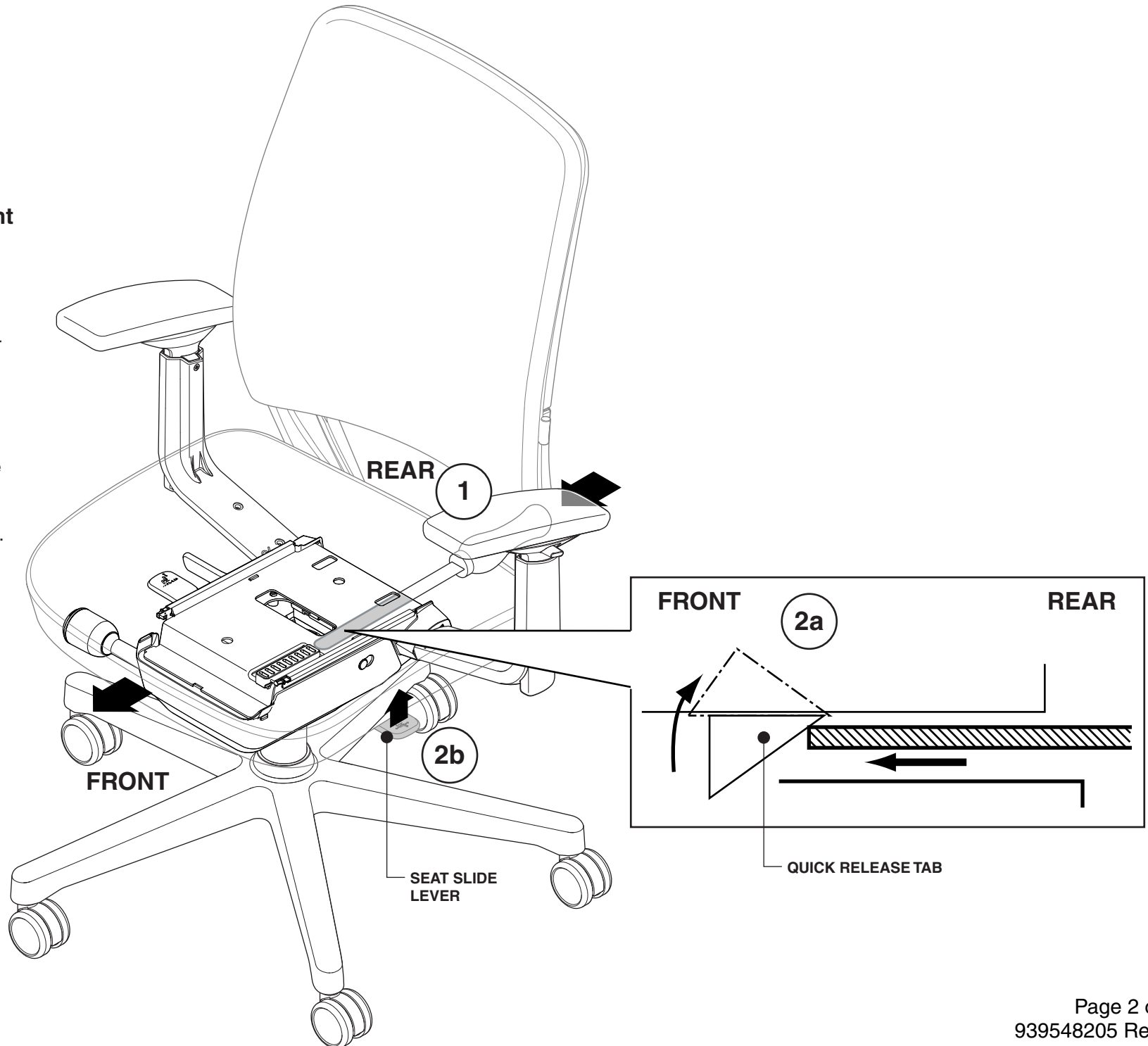


If you have a problem, question, or request, call your local dealer, or Steelcase Line 1 at **888.STEELCASE** (888.783.3522) for immediate action by people who want to help you. (Outside the U.S.A., Canada, Mexico, Puerto Rico, and the U.S. Virgin Islands, call: 1.616.247.2500) Or visit our website: www.steelcase.com

© 2007 Steelcase Inc.
Grand Rapids, MI 49501
U.S.A.
Printed in U.S.A.

Arm Replacement

1. Locate the white quick release tab located on the left hand side of the chair (as you sit in it) between the plates.
2. Lift the quick release tab (2a) while lifting the seat slide lever (2b) and sliding the seat forward & off.

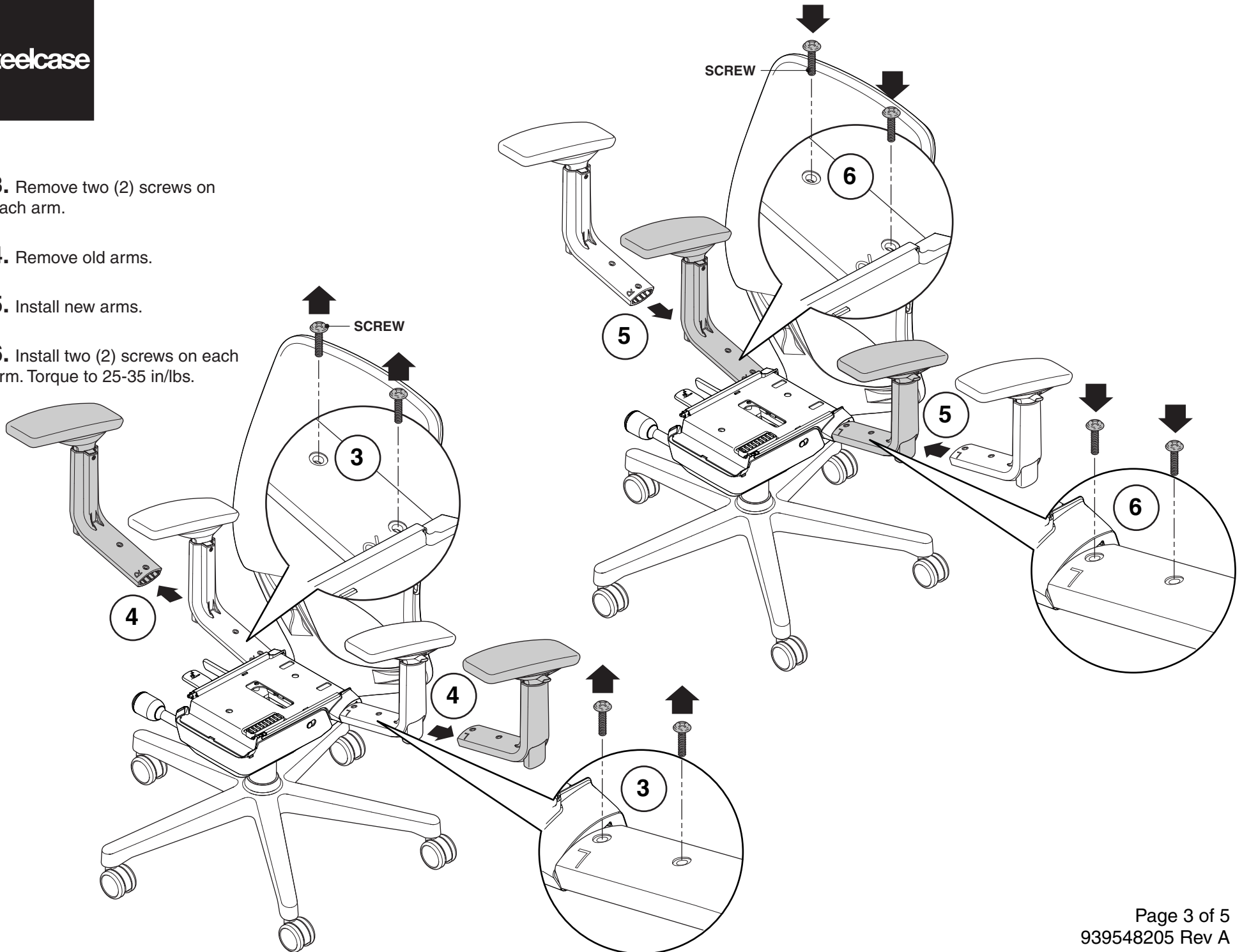


3. Remove two (2) screws on each arm.

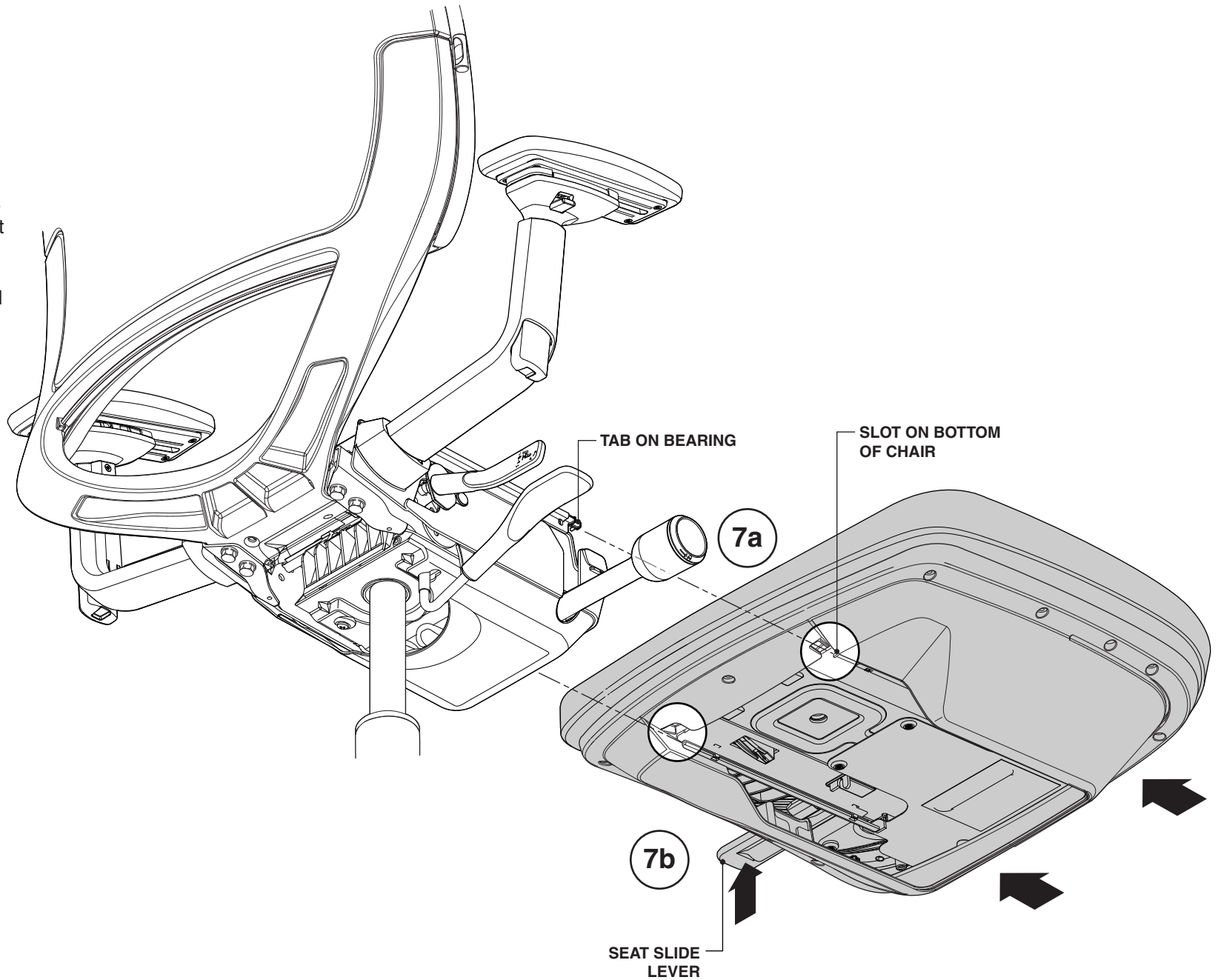
4. Remove old arms.

5. Install new arms.

6. Install two (2) screws on each arm. Torque to 25-35 in/lbs.



7. Align seat with chair control and engage slots on the bottom of the seat with the tabs located on the seat bearings (7a). Slide seat fully backward while holding up on the seat slide lever (7b).



Arm Cap Replacement

1. To remove arm cap, remove four (4) screws (1a) and remove cap from arm (1b). To replace arm cap, reverse steps 1a and 1b and tighten screws to 6-10 in/lbs.

When installing, make sure to align the ribs on the two (2) screw bosses of the arm cap to the rear of the arm.

