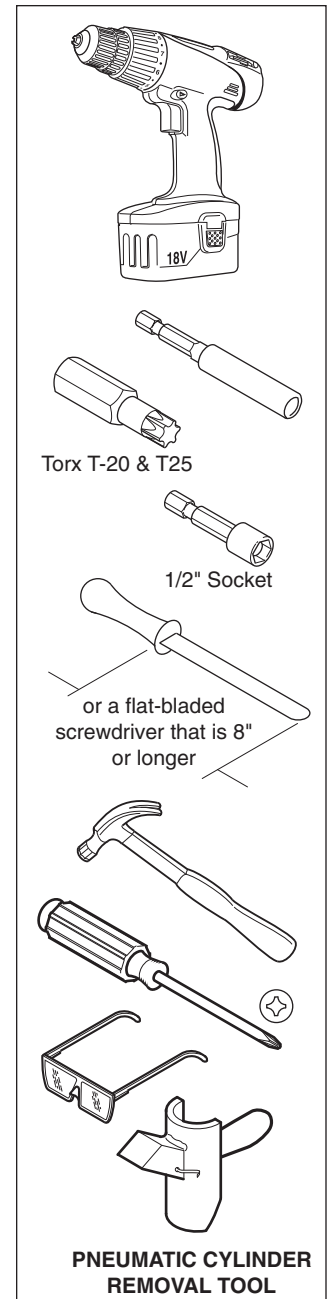


Table of Contents

Page	Topic
2-3	Removal & Installation of the Seat
4	Removal & Installation of the Arms
5	Removal & Installation of the Arm Cap
6-7	Removal & Installation of the Back Cushion
8	Removal & Installation of the Lumbar
8	Removal & Installation of the Back Shell
9	Removal & Installation of the Air Back Shell
10	Removal & Installation of the Air Lumbar Pad
11-12	Removal & Installation of the Back Assembly
13	Removal & Installation of the Base
14	Removal & Installation of the Base Cap
15	Removal & Installation of the Pneumatic Cylinder
16	Removal & Installation of the Stool Footring
17-18	Removal & Installation of the Chair Control
19	Installation of Chair Control Bumpers



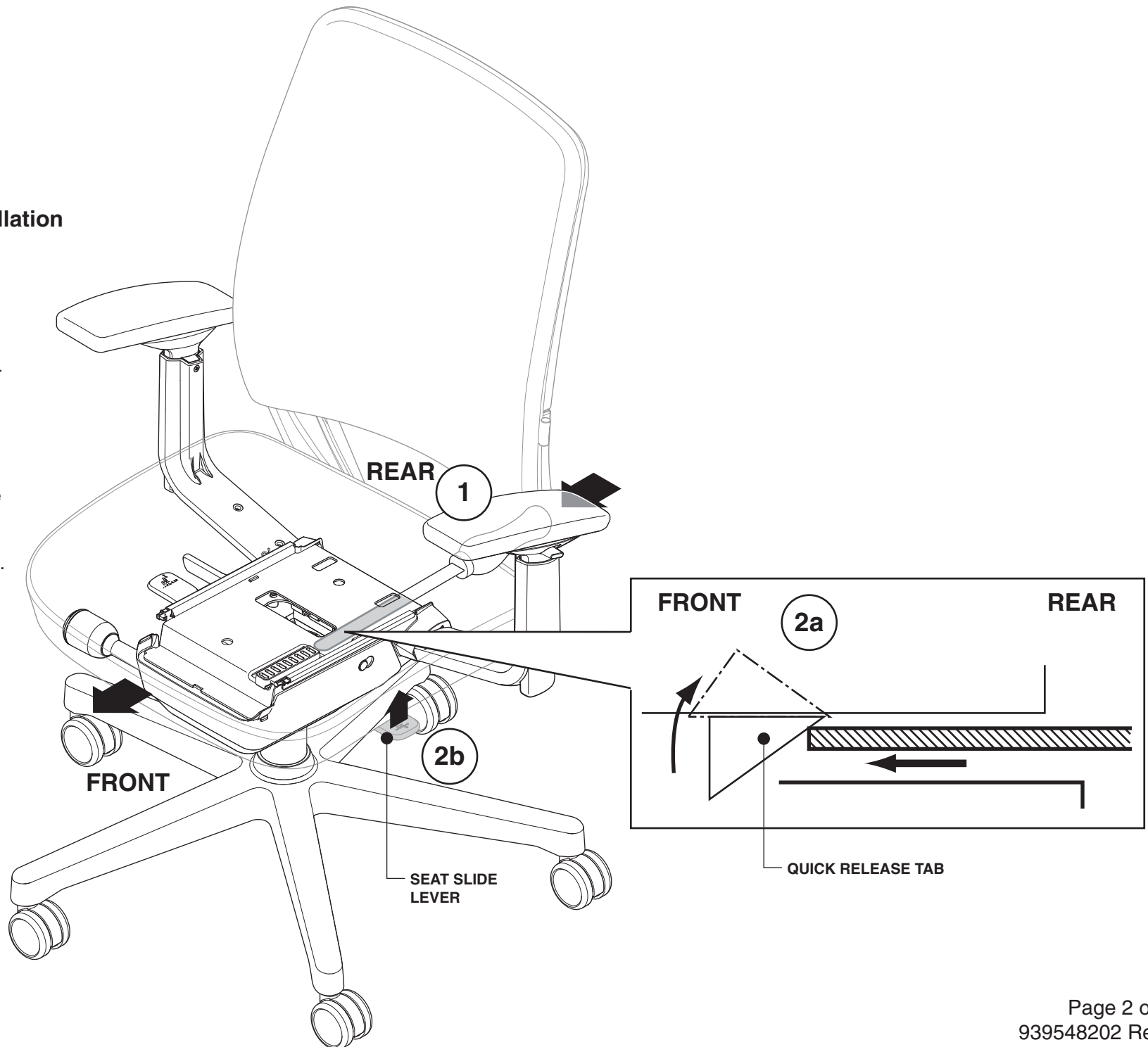
If you have a problem, question, or request, call your local dealer, or Steelcase Line 1 at 888.STEELCASE (888.783.3522) for immediate action by people who want to help you. (Outside the U.S.A., Canada, Mexico, Puerto Rico, and the U.S. Virgin Islands, call: 1.616.247.2500) Or visit our website: www.steelcase.com

© 2007 Steelcase Inc.
 Grand Rapids, MI 49501
 U.S.A.
 Printed in U.S.A.

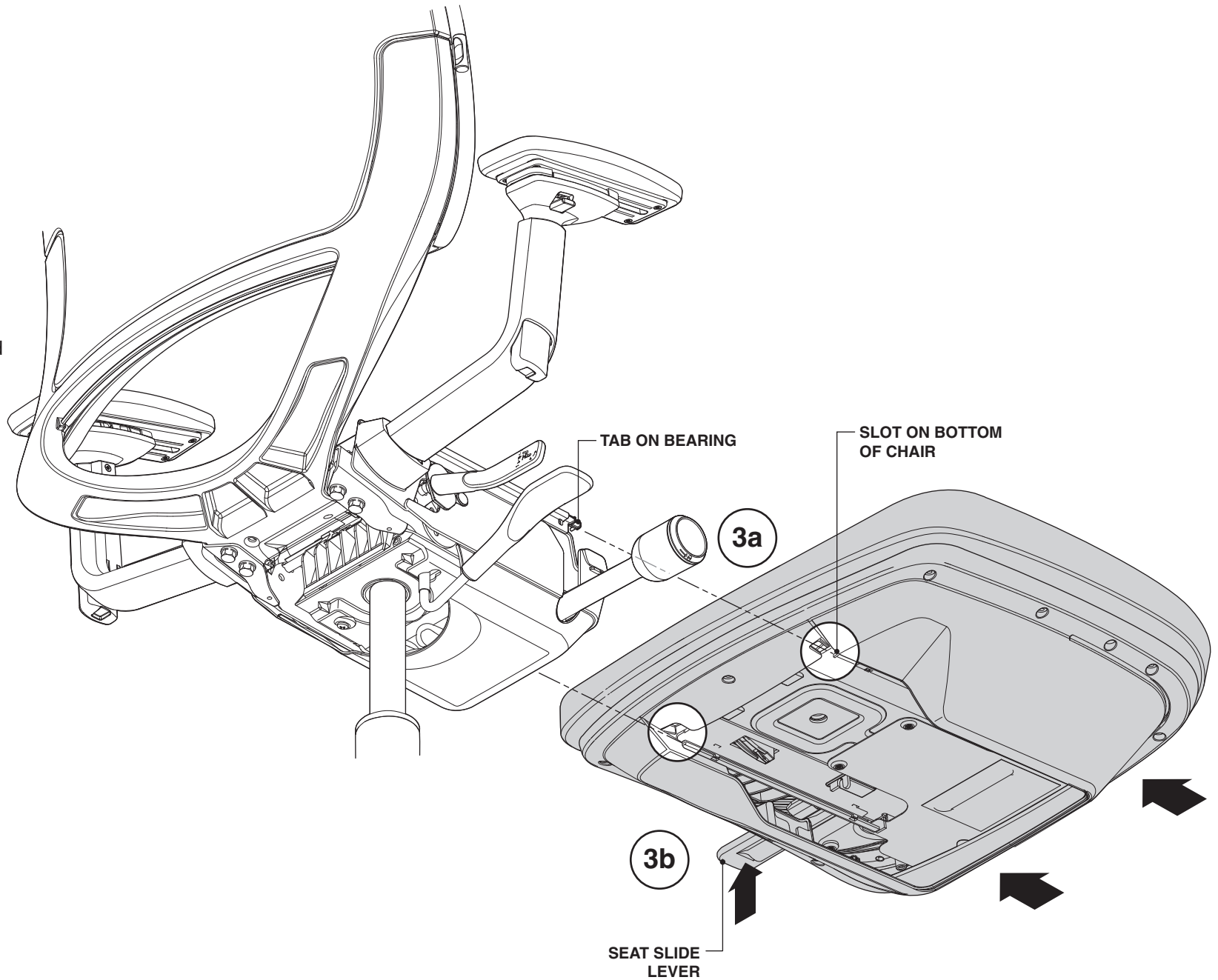
Removal & Installation of the Seat

1. Locate the white quick release tab located on the left hand side of the chair (as you sit in it) between the plates.

2. Lift the quick release tab (2a) while lifting the seat slide lever (2b) and sliding the seat forward & off.

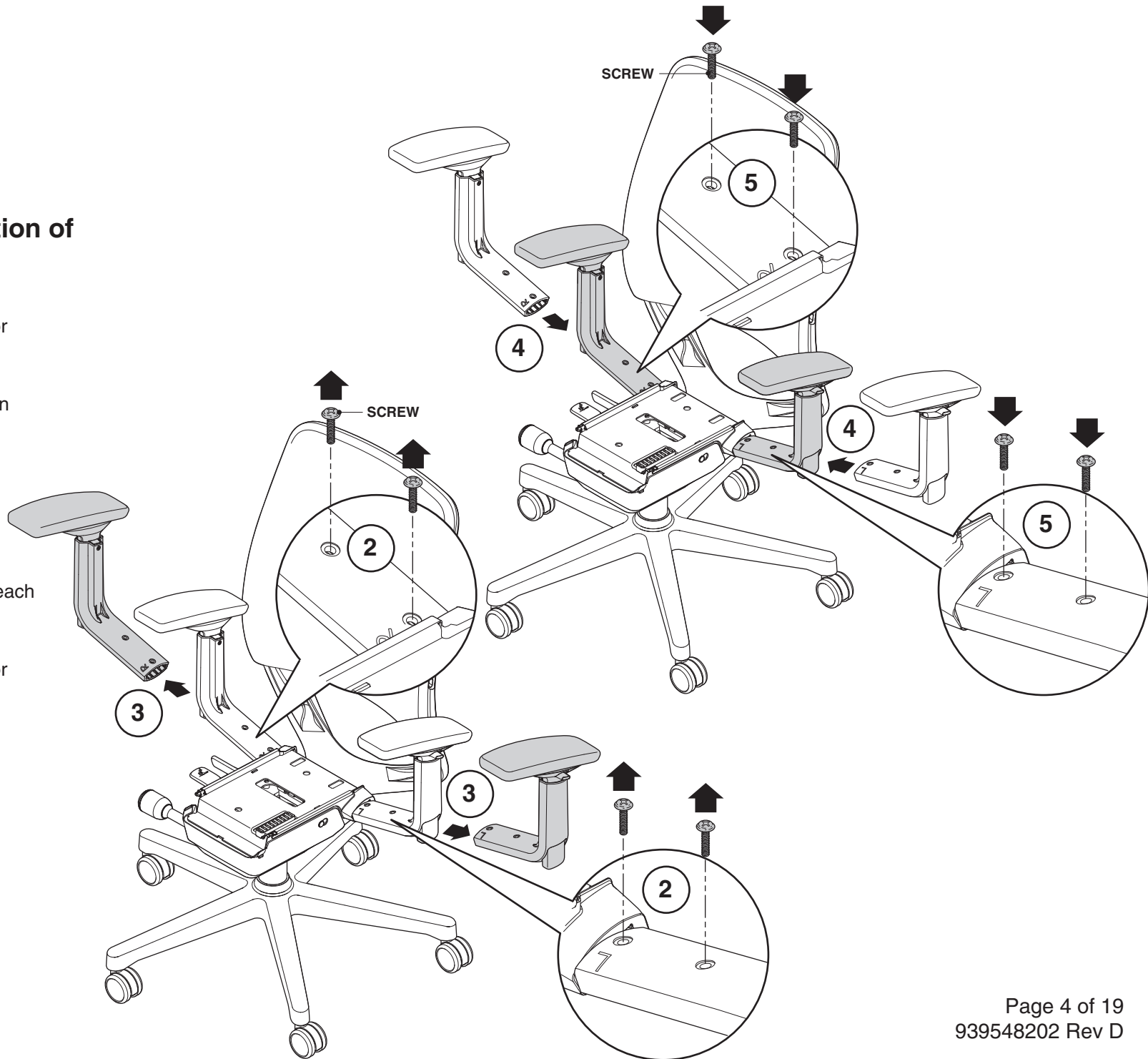


3. Align the new seat with the chair control and engage the slots on the bottom of the seat with the tabs located on the seat bearings (3a). Slide seat fully backward while holding up on the seat slide lever (3b).



Removal & Installation of the Arms

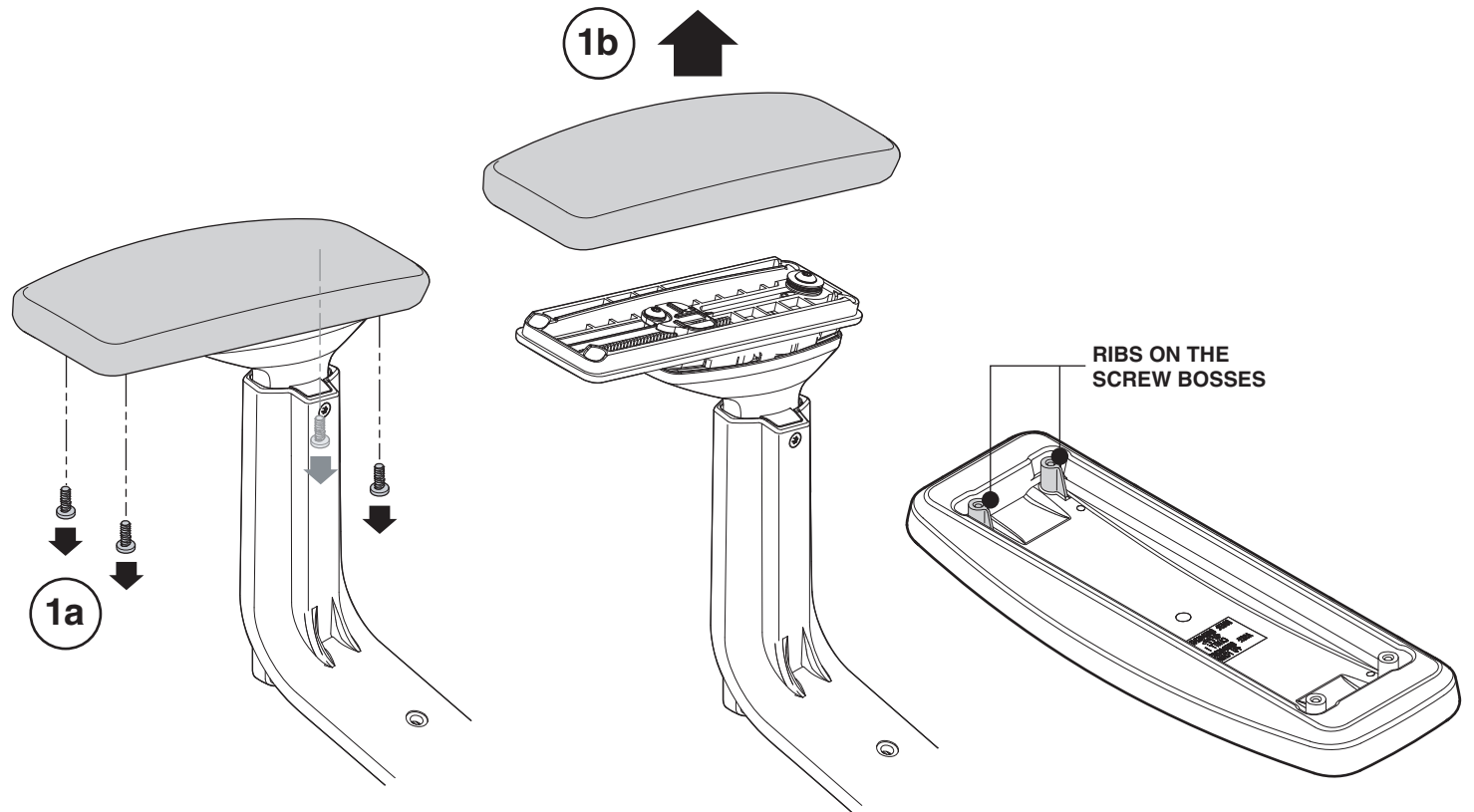
1. Follow steps on page 2 for seat removal.
2. Remove two (2) screws on each arm.
3. Remove old arms.
4. Install new arms.
5. Install two (2) screws on each arm. Torque to 25-35 in-lbs.
6. Follow steps on page 3 for seat installation.



Removal & Installation of the Arm Cap

1. To remove arm cap, remove four (4) screws (1a) and remove cap from arm (1b). To replace arm cap, reverse steps 1a and 1b and tighten screws to 6-10 in-lbs.

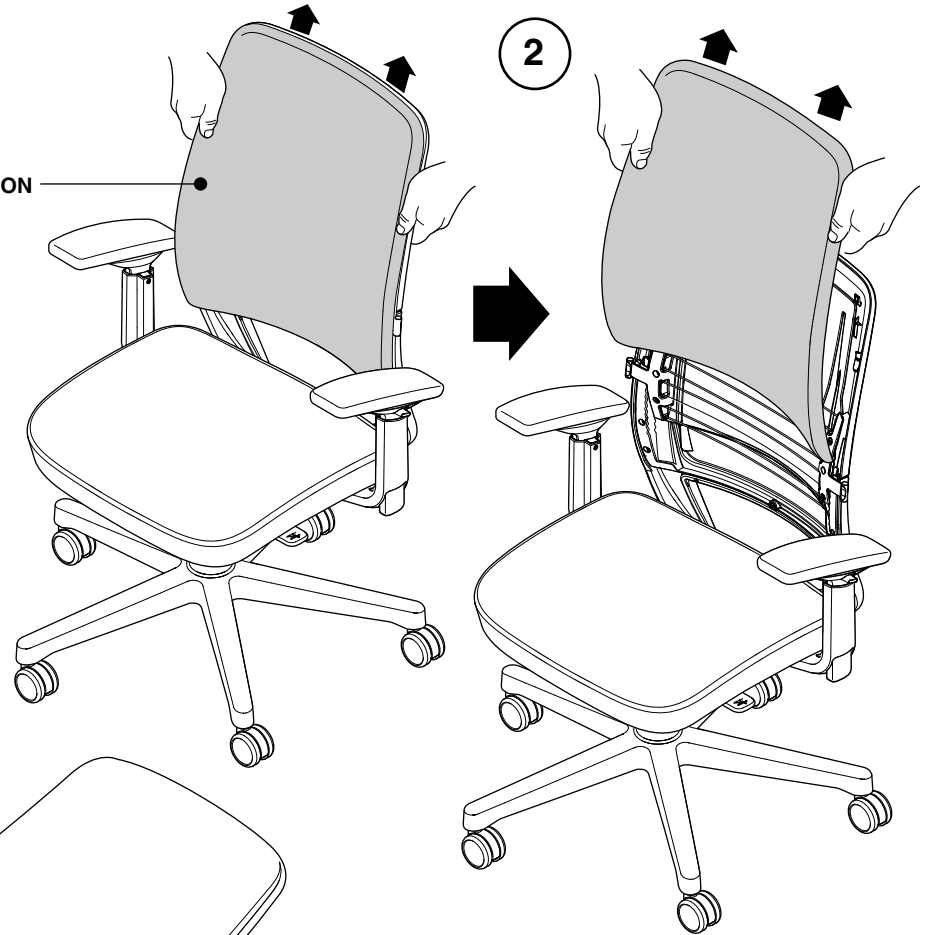
When installing, make sure to align the ribs on the two (2) screw bosses of the arm cap to the rear of the arm.



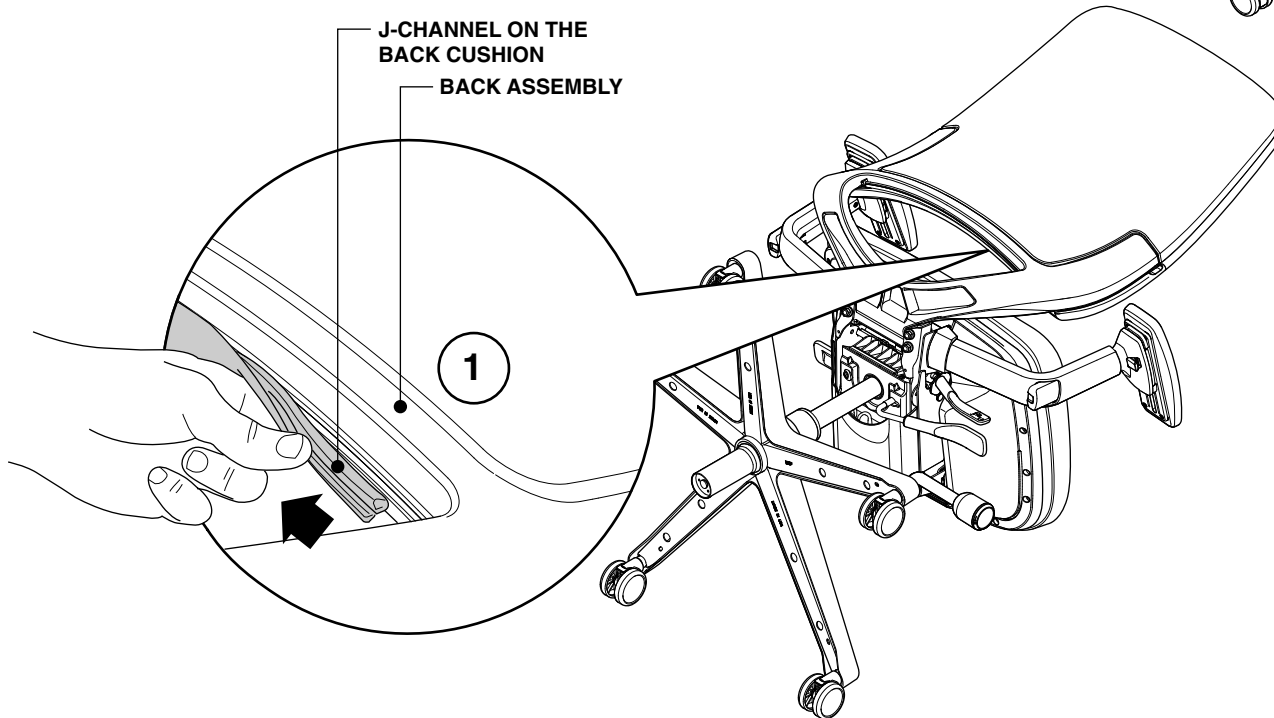
Removal & Installation of the Back Cushion

1. Lay chair on its side and peel the j-channel, on the back cushion, from the back assembly.
2. Flip chair over and lift on the back cushion to remove.

BACK CUSHION

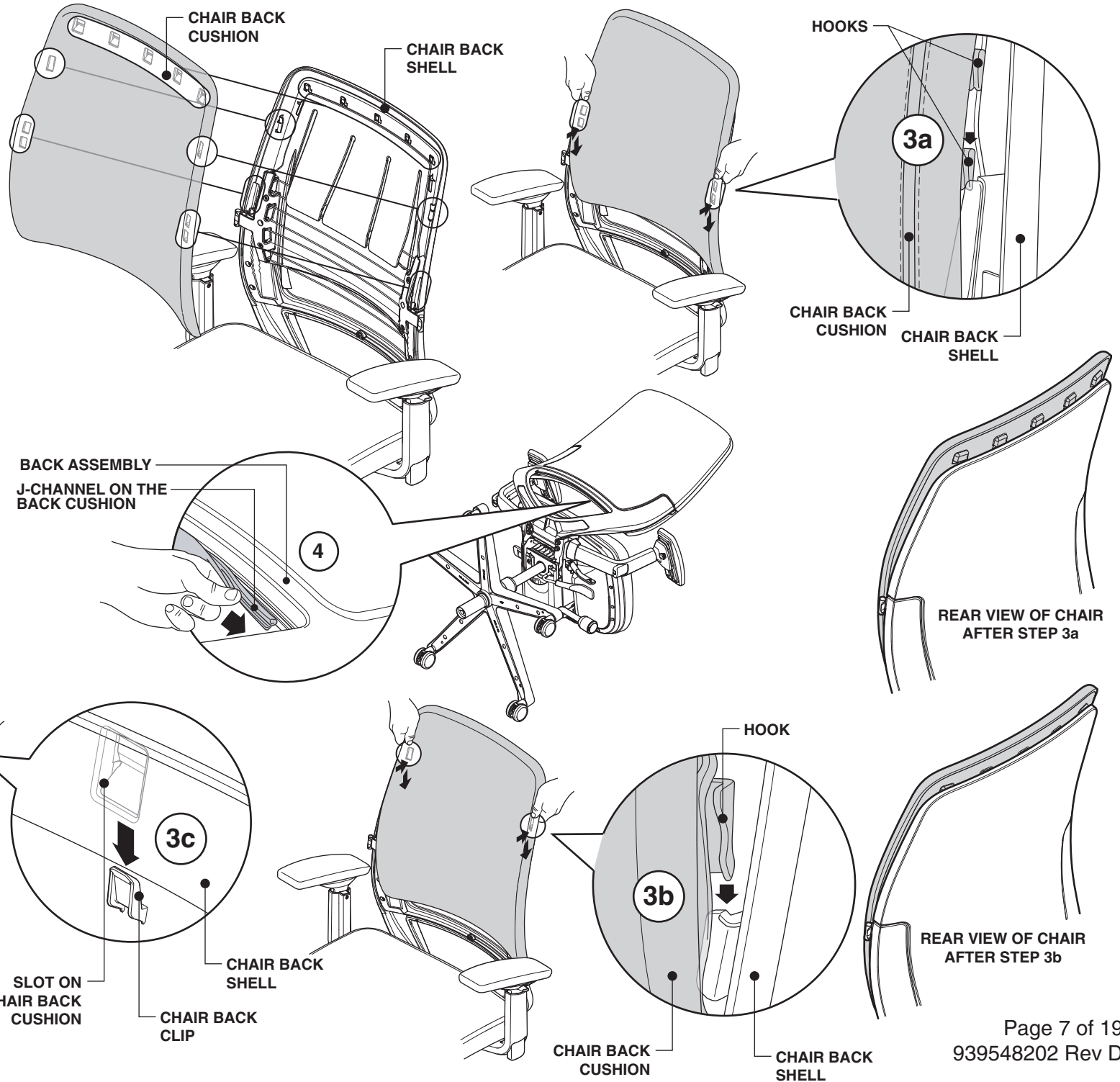


J-CHANNEL ON THE
BACK CUSHION
BACK ASSEMBLY



3. Place back cushion onto the chair back and slide back cushion onto the chair back by starting at the bottom (3a) and working your hands upward as shown (3b & 3c) until installed.

4. Lay chair on its side and install the j-channel, on the back cushion, to the back assembly.

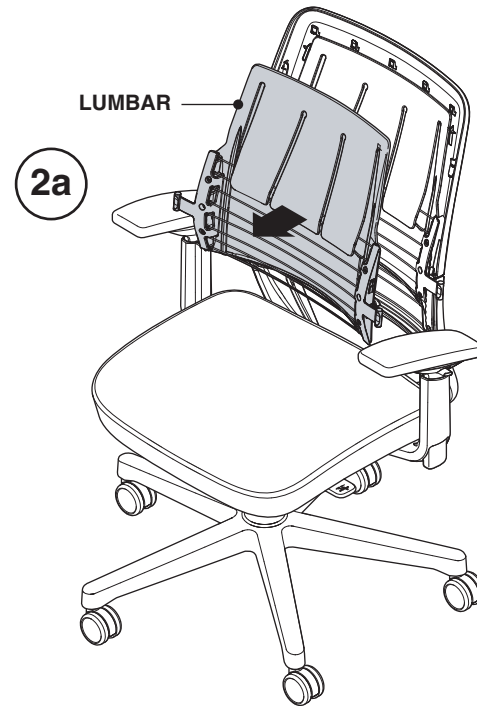


Removal & Installation of the Lumbar

1a. Follow steps on page 6 for removal of the back cushion.

2a. Remove the lumbar by pulling it out. To install the lumbar, place one side of the lumbar into position in the back assembly. Then, flex the lumbar (and the wires of the lumbar) inward and place the other side into position.

3a. Follow steps on page 7 for installation of the back cushion.



Removal & Installation of the Back Shell

1b. Follow steps on page 6 for removal of the back cushion.

2b. Refer to Removal & Installation of the Lumbar above to remove the lumbar.

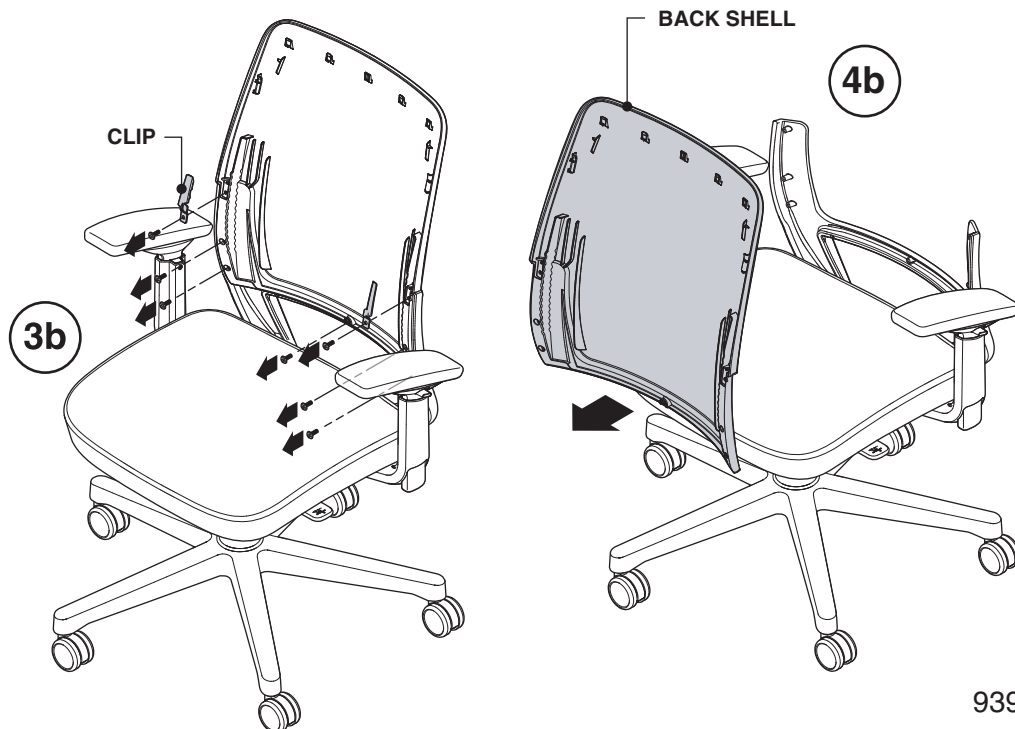
3b. Remove seven (7) screws and two (2) clips.
Note: Save the clips for reassembly.

4b. Remove the back shell. Reverse step for installation of the back shell.

5b. Attach seven (7) screws and two (2) clips.
Torque to 25-50 in-lbs.

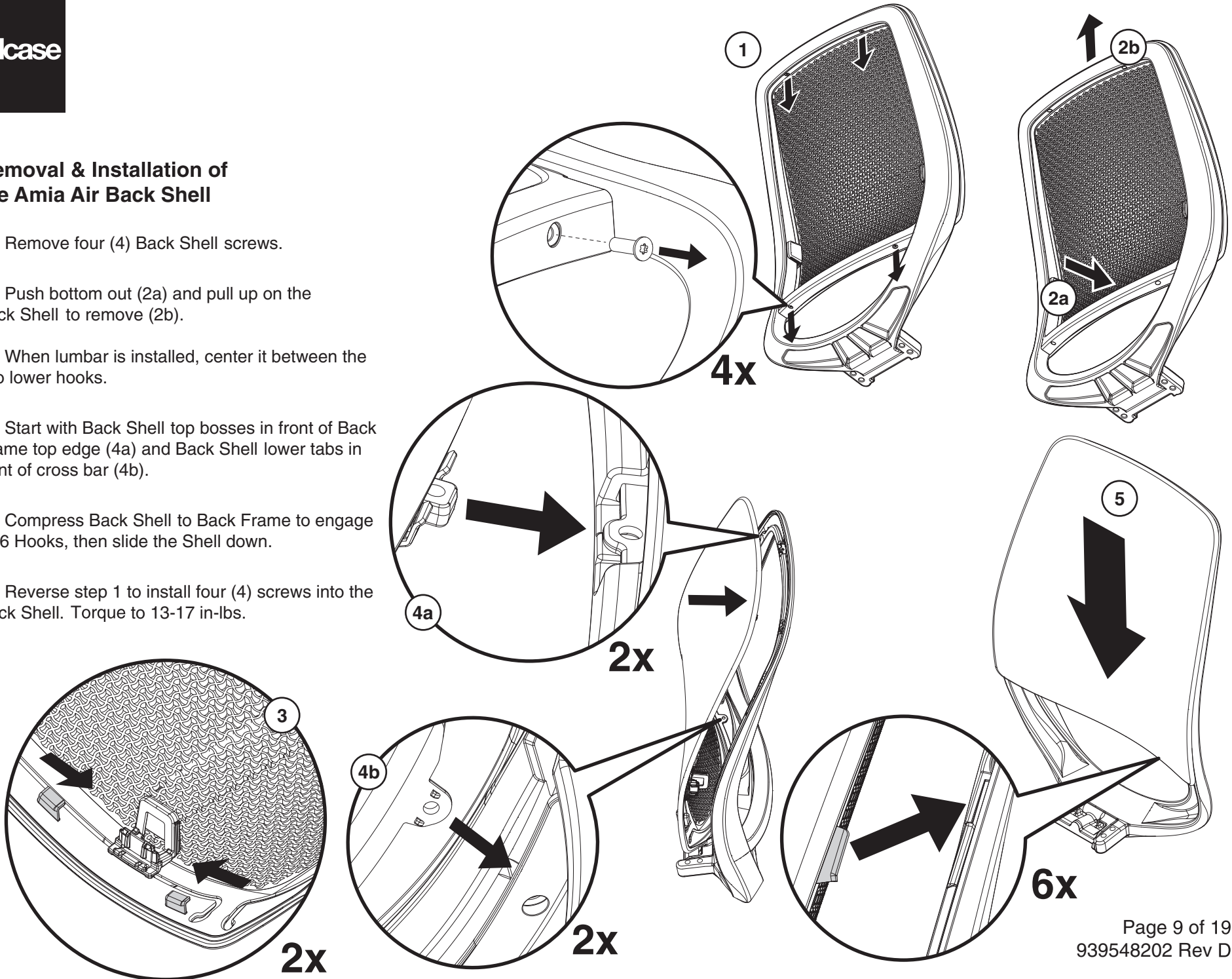
6b. Refer to installation of the Lumbar above to install the lumbar.

7b. Follow steps on page 7 for installation of the back cushion.



Removal & Installation of the Amia Air Back Shell

- 1.** Remove four (4) Back Shell screws.
- 2.** Push bottom out (2a) and pull up on the Back Shell to remove (2b).
- 3.** When lumbar is installed, center it between the two lower hooks.
- 4.** Start with Back Shell top bosses in front of Back Frame top edge (4a) and Back Shell lower tabs in front of cross bar (4b).
- 5.** Compress Back Shell to Back Frame to engage all 6 Hooks, then slide the Shell down.
- 6.** Reverse step 1 to install four (4) screws into the Back Shell. Torque to 13-17 in-lbs.



Removal & Installation of the Lumbar for Amia Air

1. Follow steps on page 9 for removal of the Back Shell.

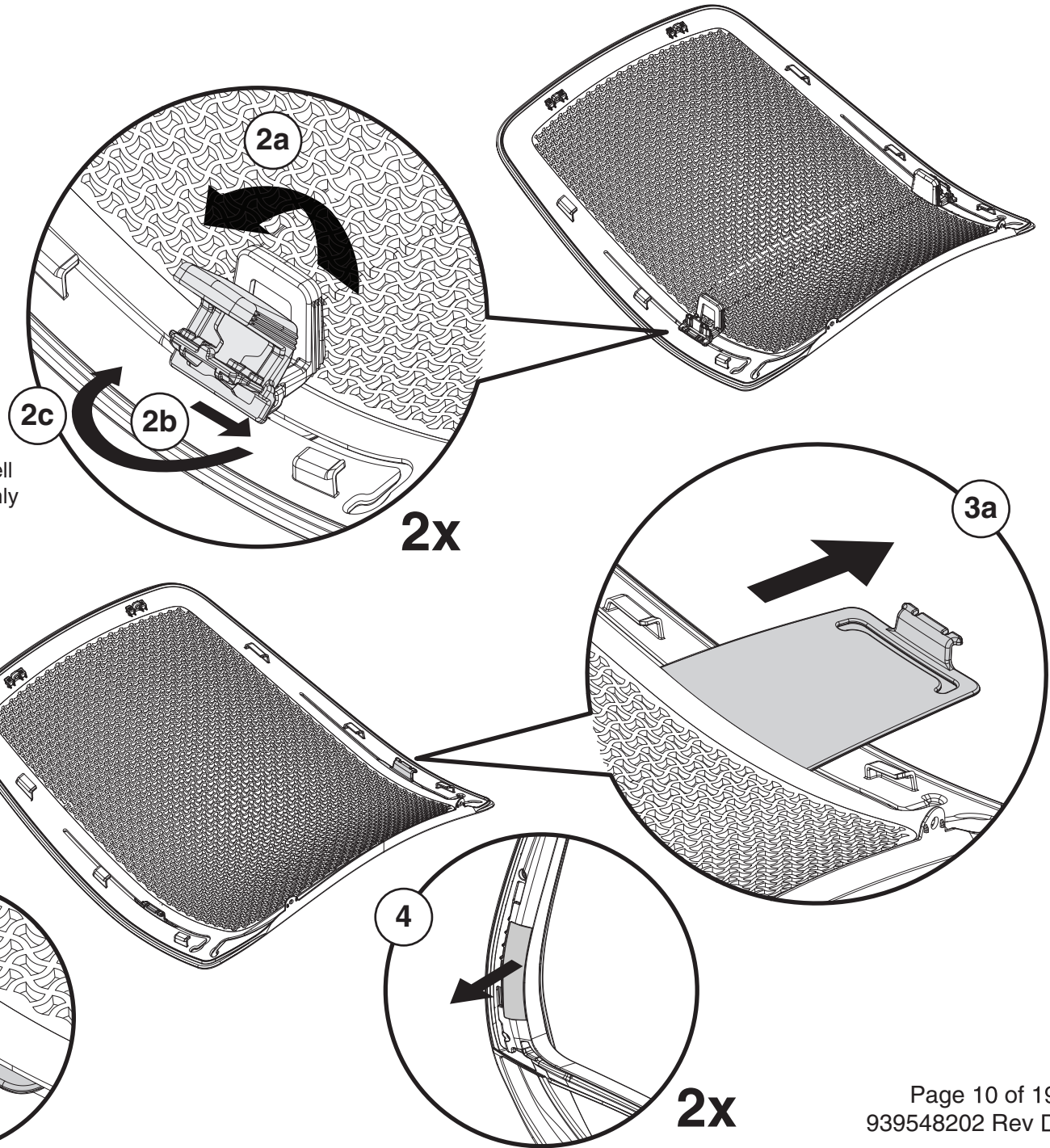
2. With Back Shell removed, the Lumbar Handles can be removed from the Lumbar pad. Rotate the Handle to 45° (2a), then shift the gap to one end (2b) and rotate Handle to unsnap from Lumbar Pad (2c).

3. Remove lumbar by sliding it out of the Back Shell slot (3a). Reverse step for installation of lumbar. Only Handle snaps should protrude from the Back Shell slot (3b).

4. Reverse step 2 to reinstall the Lumbar Handles.

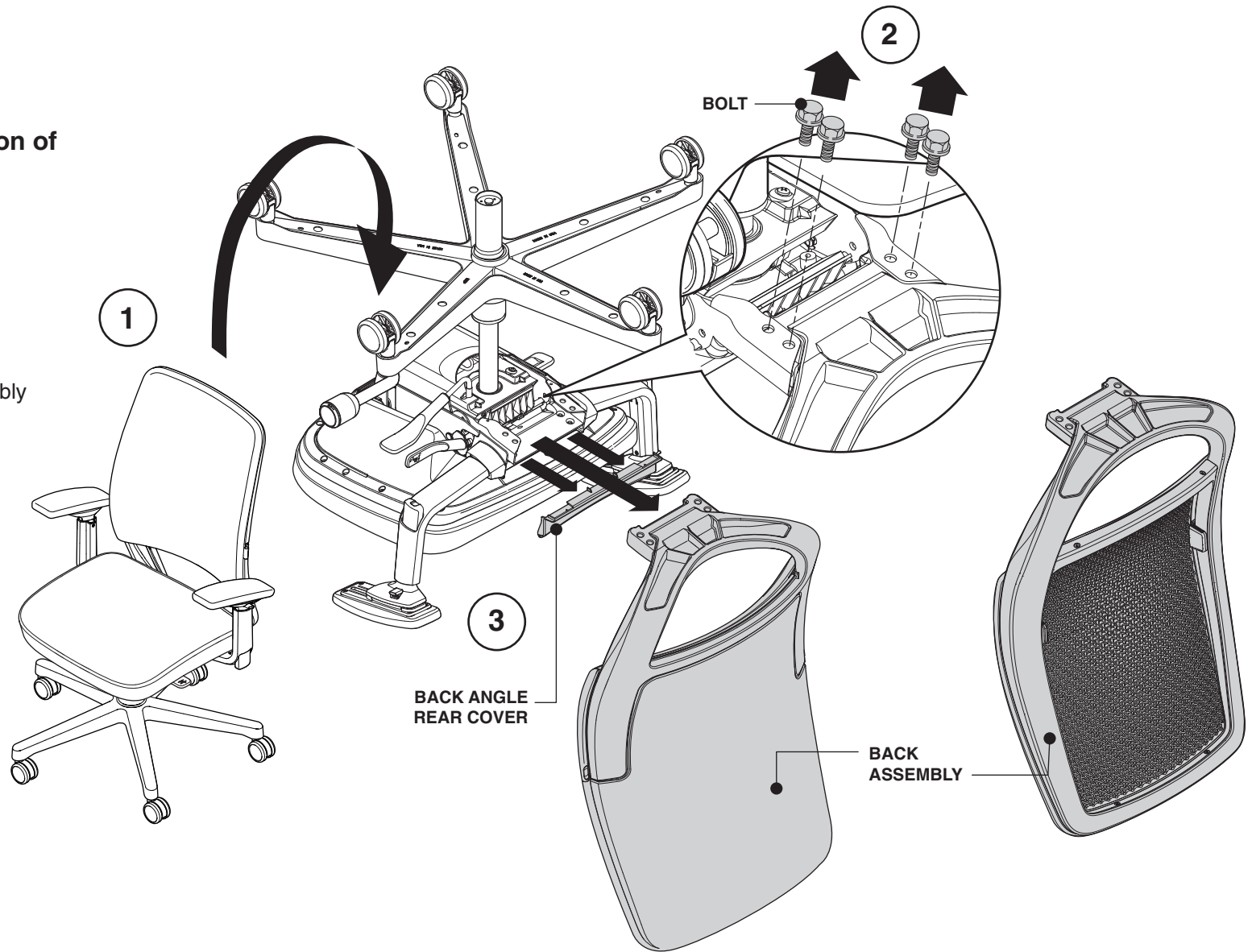
NOTE: When adding a Lumbar Pad to a chair that was purchased without one you will need to remove the Lumbar Filler pieces. (4) To remove, pull out by hand or use a flat blade screw driver to pop-out.

5. Follow steps on page 9 for installation of the Back Shell.



Removal & Installation of the Back Assembly

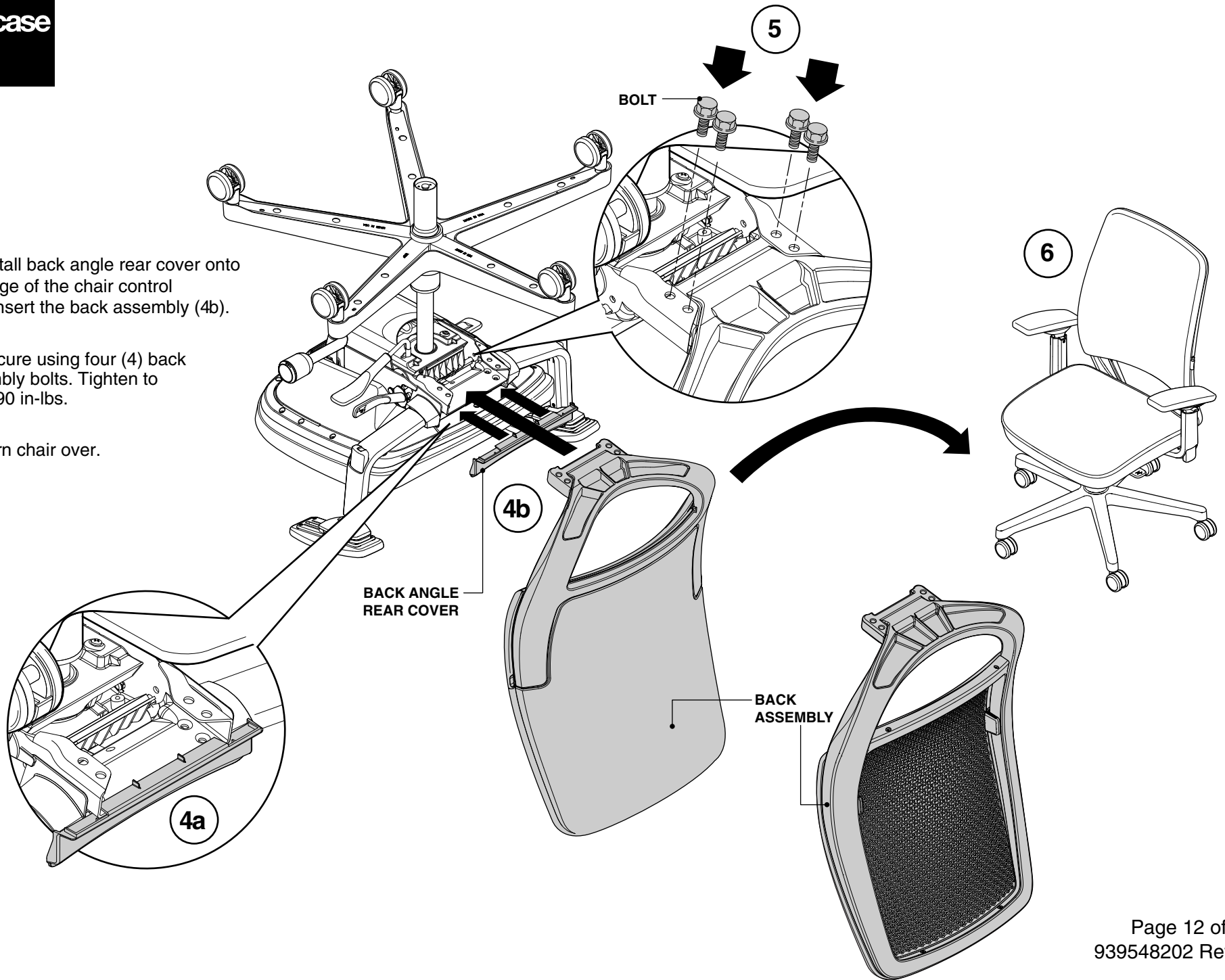
1. Turn chair over.
2. Remove four (4) back assembly bolts.
3. Remove back assembly and back angle rear cover. Set back angle rear cover aside until reassembly.



4. Install back angle rear cover onto the edge of the chair control (4a). Insert the back assembly (4b).

5. Secure using four (4) back assembly bolts. Tighten to 130-190 in-lbs.

6. Turn chair over.



Removal & Installation of the Base

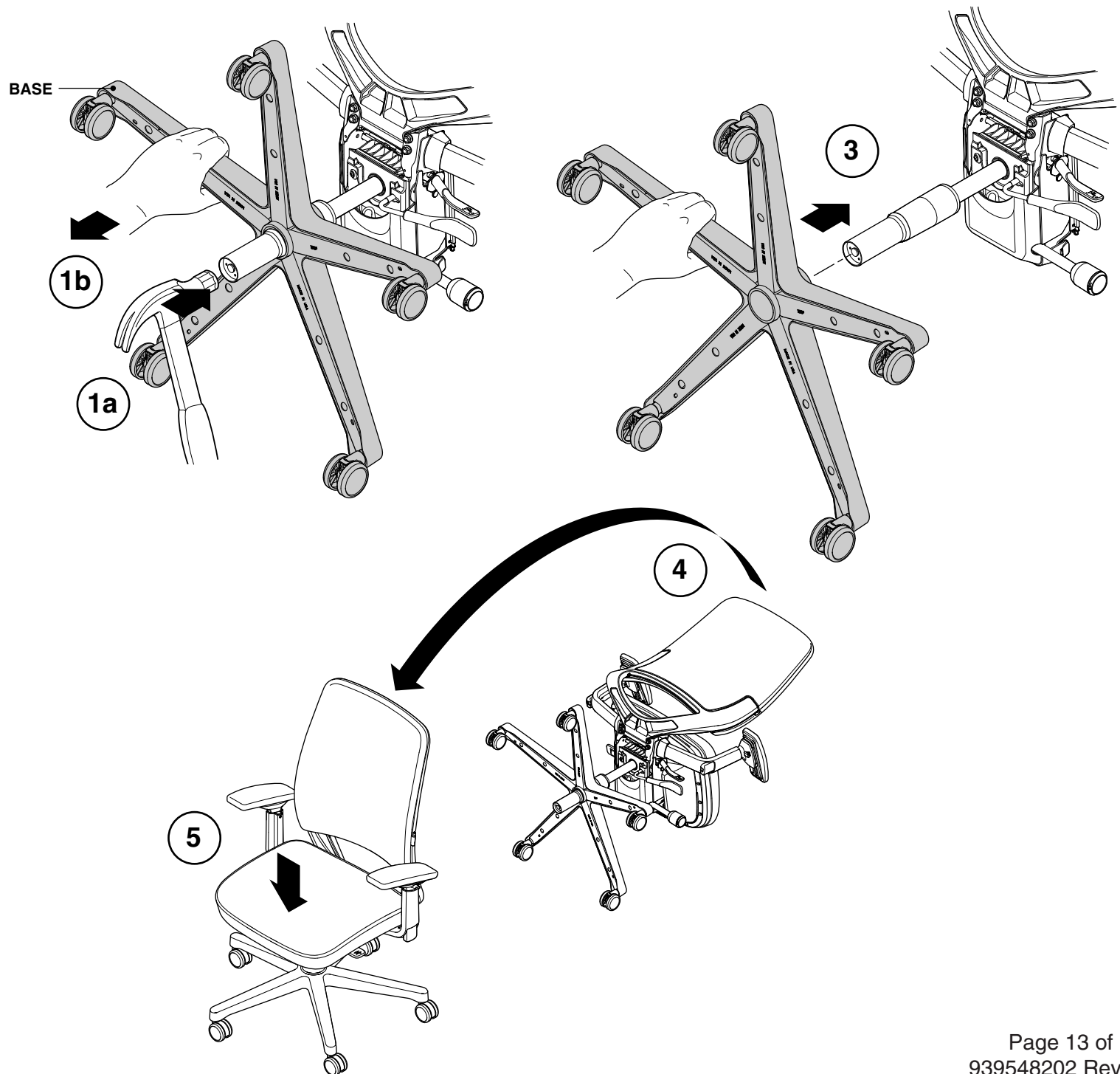
1. Turn chair on its side and hit bottom of the cylinder with a hammer (1a) while pulling forward on the chair base (1b).

2. Remove chair base.

3. To install base, align base with cylinder and slide onto cylinder.

4. Turn chair over.

5. Sit in chair to seat the cylinder into the base.



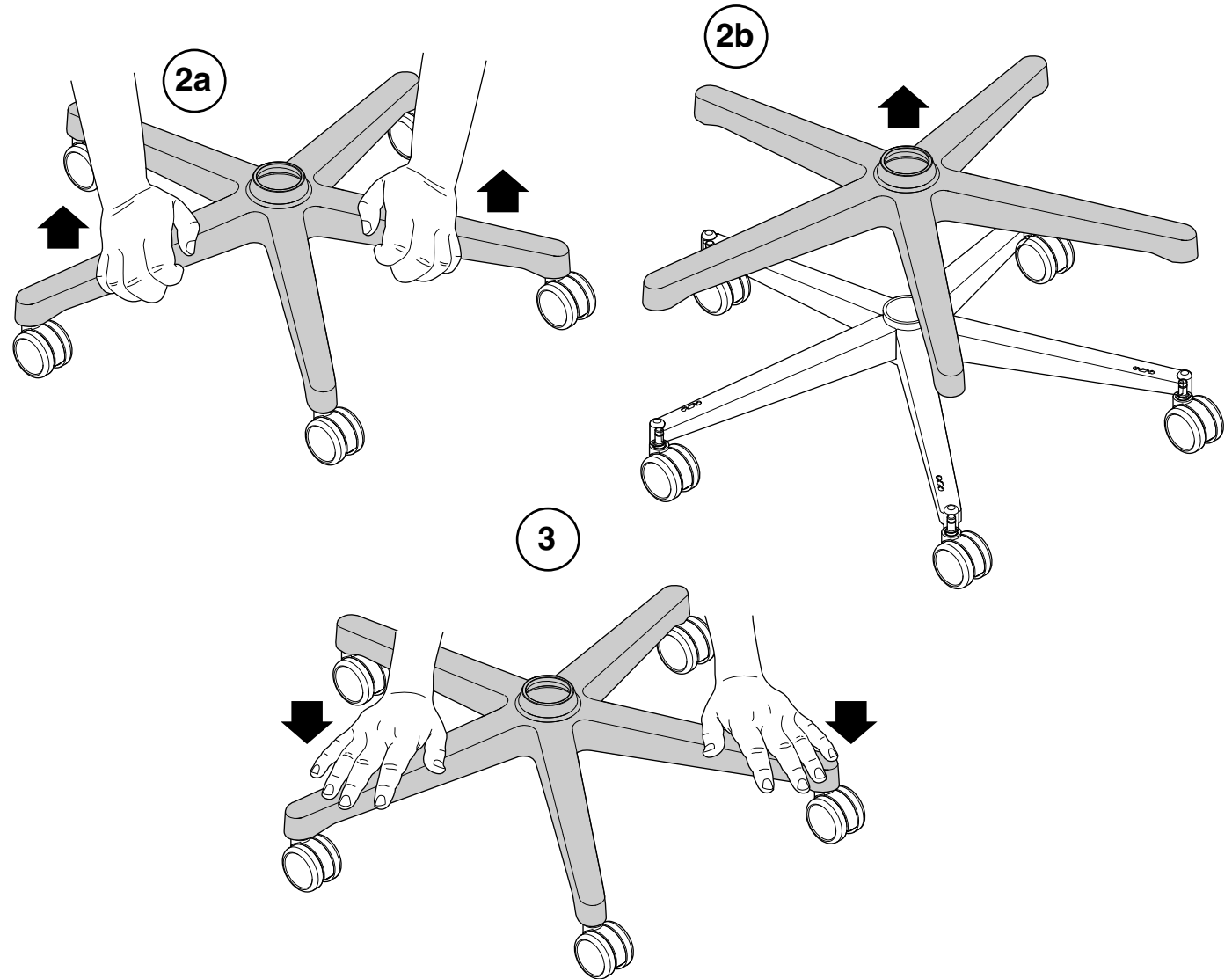
Removal & Installation of the Base Cap

1. Follow the steps on page 13 for base removal.

2. Using your hands, pry the base cap off of the base (2a) and remove (2b).

3. To install base cap, place the cap onto the base and press.

4. Follow the steps on page 13 for base installation.



Removal & Installation of the Pneumatic Cylinder

1. Follow steps on page 13 for base removal.

2. Install the pneumatic cylinder removal tool (part number 879100100) on the top part of the column, as close as possible to the control.

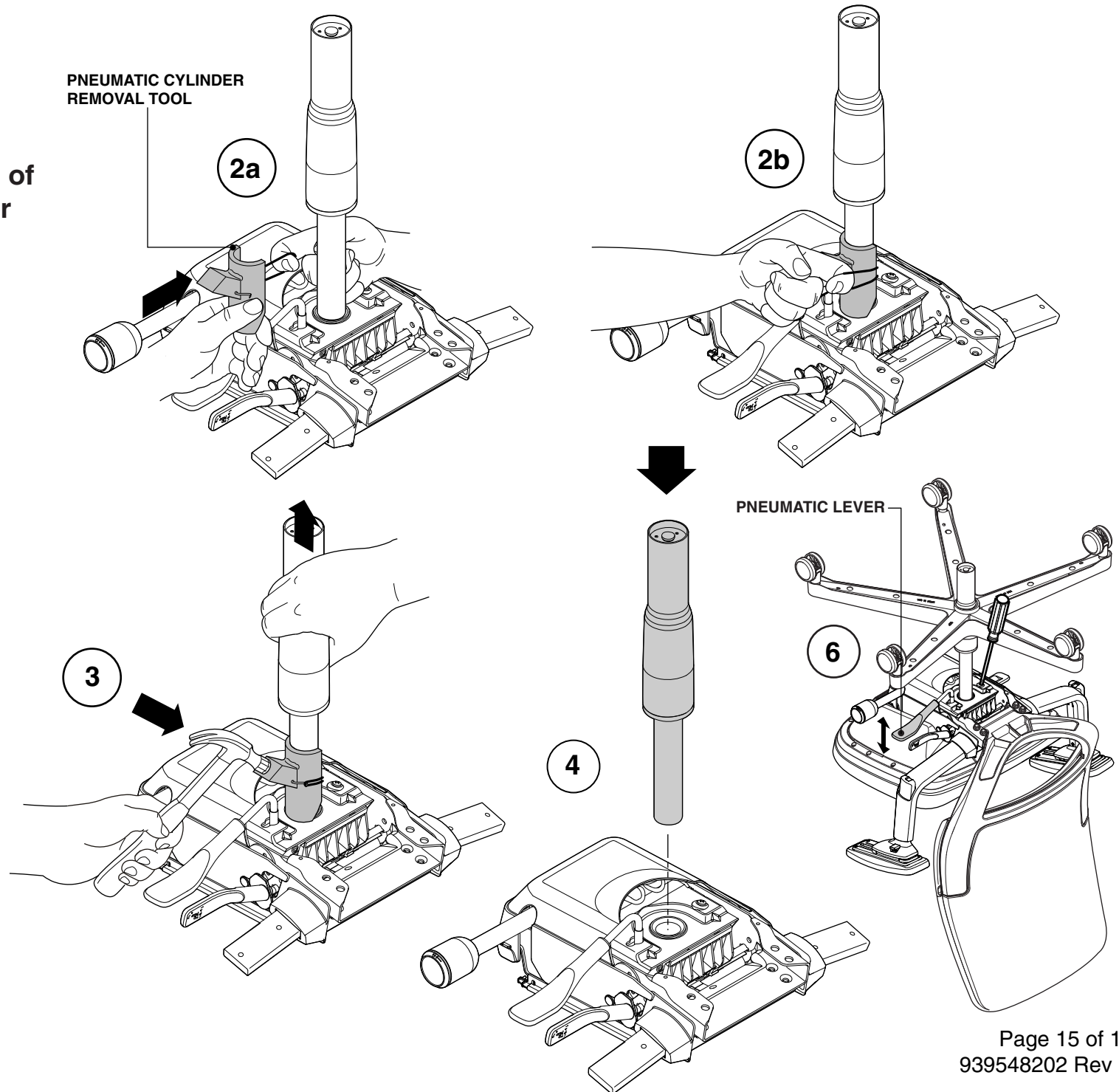
3. Apply lifting force to the column, with one hand. With the hammer in the other hand, give the removal tool several solid hits, on the flat part.

If pneumatic cylinder does not separate from control, apply WD-40 where lift is embedded into control. Wait approx. 20 minutes and repeat step 3.

4. Install cylinder into chair control.

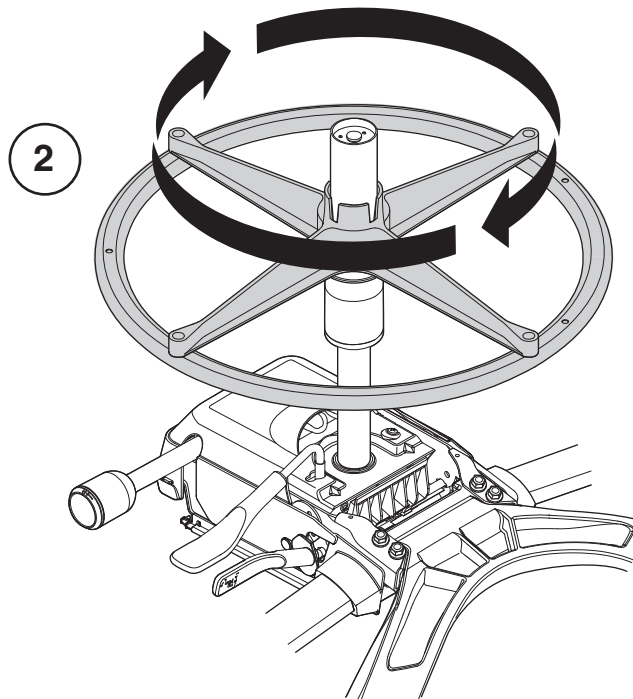
5. Follow steps on page 13 for base installation.

6. Flip the chair over a final time and adjust the pneumatic lever (if required) to have a 1/4" of free vertical movement.



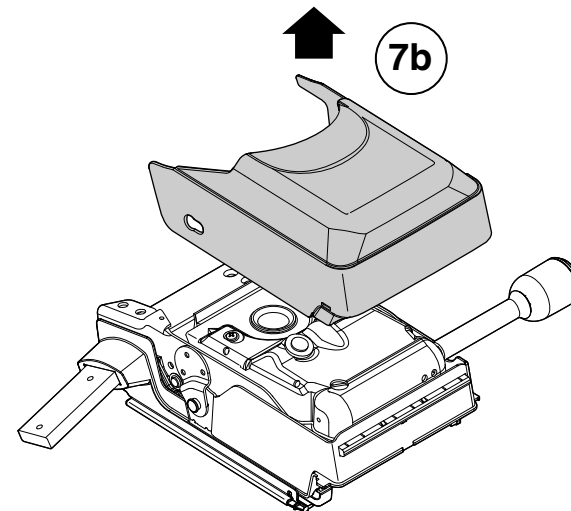
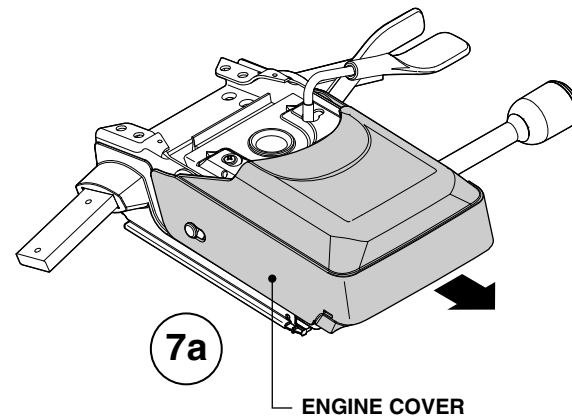
Removal & Installation of the Footring

1. Follow steps on page 13 for base removal.
2. Twist footring and remove.
3. Reverse step 2 to install new footring.
4. Follow steps on page 13 for base installation.



Removal & Installation of the Chair Control

1. Follow steps on page 11 to remove the back assembly.
2. Follow steps on page 2 to remove the seat.
3. Follow steps on page 4 to remove the arms.
4. Follow steps on page 13 to remove the base.
5. If footring is installed, follow steps on page 16 to remove the footring.
6. Follow steps on page 15 to remove the cylinder.
7. Unsnap front corners of the engine cover and slide forward (7a) and remove (7b).



8. To install the new chair control, begin by reversing steps 7a and 7b.

9. Follow steps on page 15 to install the cylinder.

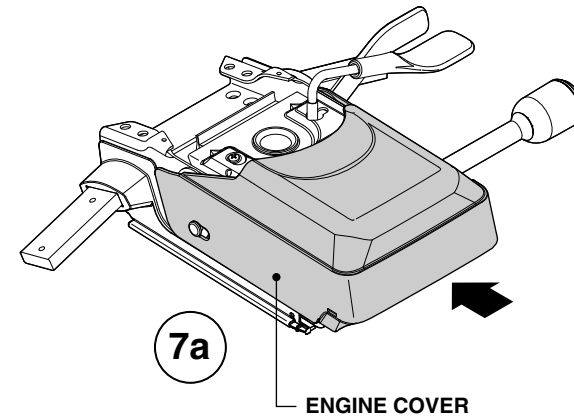
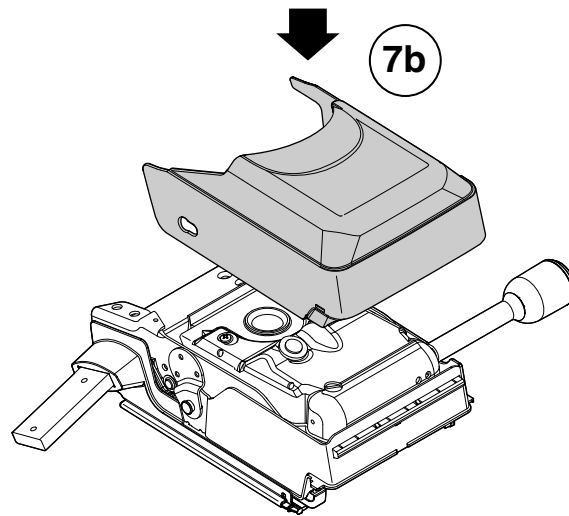
10. Follow steps on page 16 to install the footring if necessary.

11. Follow steps on page 13 to install the base.

12. Follow steps on page 4 to install the arms.

13. Follow steps on page 3 to install the seat.

14. Follow steps on page 12 to install the back assembly.



Installation of Chair Control Bumpers

1. Refer to page 2 and remove the seat assembly from the chair. Access the chair control bumpers through the rectangular opening in the base assembly top plate.
2. Slide bumper onto the edge of the reclining mechanism frame as shown (2a). Then, force the bumper top flange up through the hole in the mechanism frame (2b).
3. Repeat step 2 if necessary, for bumper on opposite side of the chair.
4. Refer to page 3 and reinstall seat assembly.

