

Milliken Contract

santé™

CXC® MODULAR

Even a small change can bring a new sense of balance

Introducing Santé™, a color-rich carpet collection designed specifically to bridge a gap too often left unaddressed in today's healing environments. Milliken recognizes that healthcare interiors have challenging functional needs best served by a high-performance product. Yet there's a human element — patients and their families, caregivers and staff — that responds to the softness and comfort best provided by Milliken carpets. The seven patterns of Santé address both needs, balancing the corporate with the human. We promise you beauty and more.

More environmentally sound. Santé's 36-inch modular construction includes our exclusive TractionBack® system, a totally new way to install carpet. This high-friction coating creates carpet that stays securely in place without wet adhesives, floor sealers or primers.

More cost-effective. In a 24-hour healthcare environment, there's no time to waste. Santé modular carpet installs in record time and stands up to heavy traffic, even rolling equipment. You can replace tiles as needed without disruption. And patterns match every time.

More colorful. You asked for color and lots of it.

Milliken delivers. Here's to your health.



patterns





Discover the therapeutic effects of creating beautiful spaces

Develop your own expression of wellness. The Santé™ collection's modular format gives you enormous flexibility to highlight and define the functionality of any installation. For example, select two (or more) Santé patterns for subtle interest or for directional guides — all it takes is a common color palette to ensure perfect design harmony. You will find plenty of thought starters in the pages that follow.



Aqua Viva



Awareness



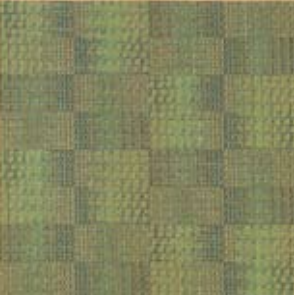
Relaxation



Revitalization



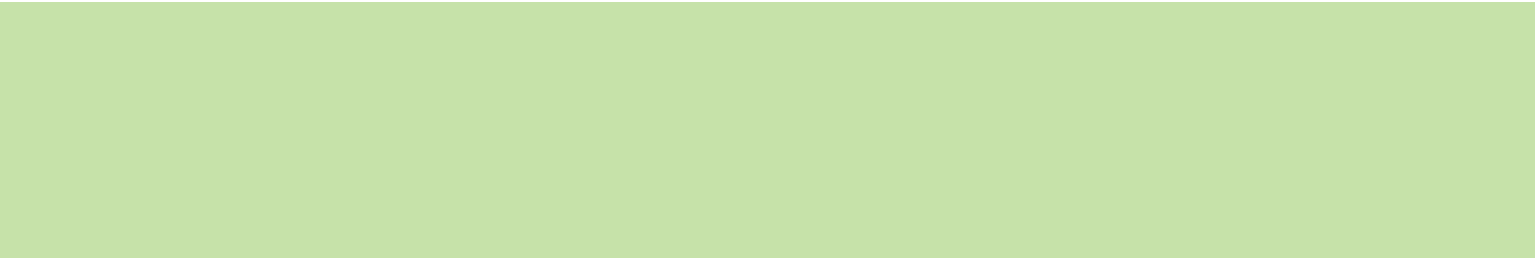
Repose



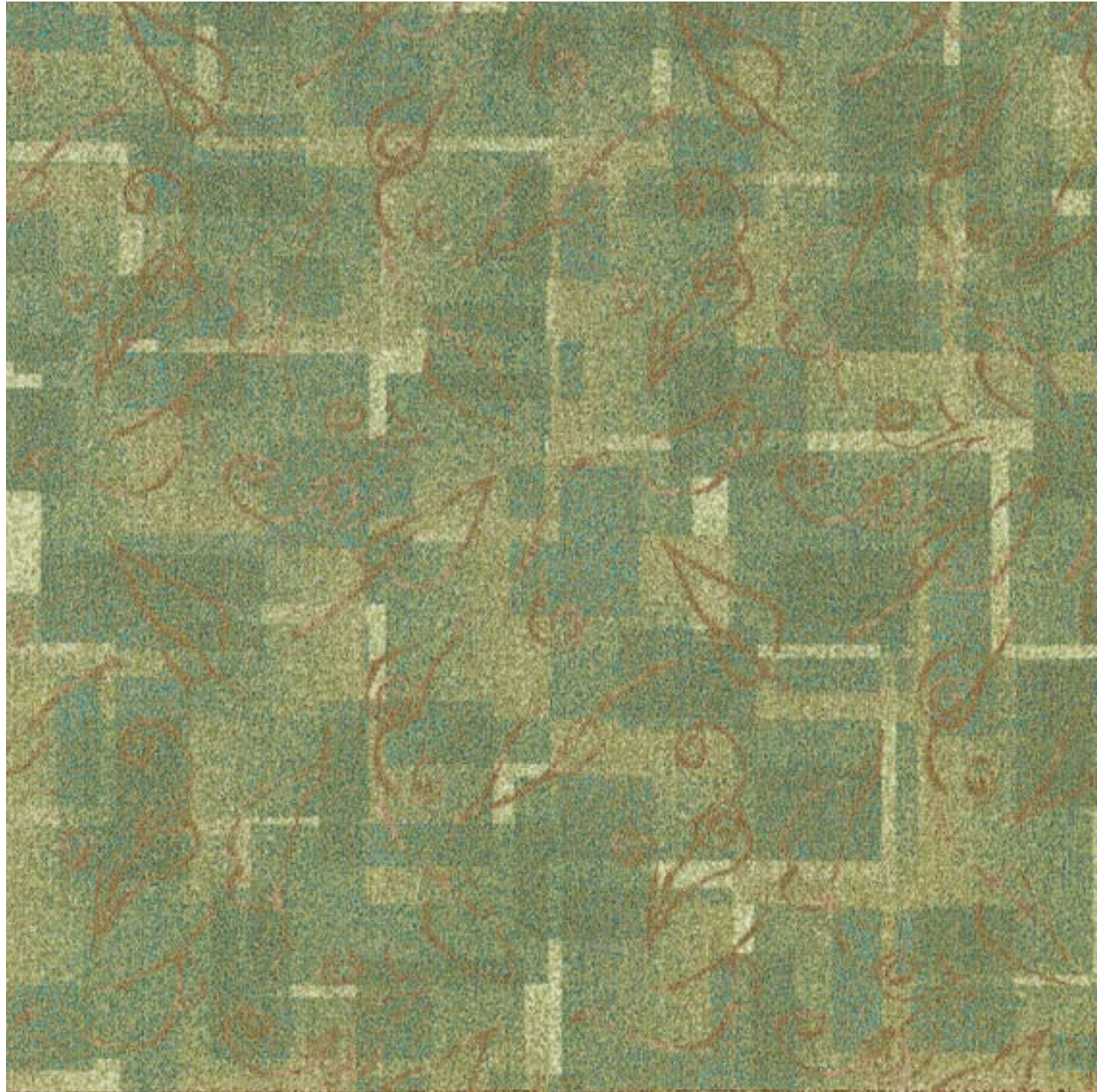
Ascendance



Lifestyle



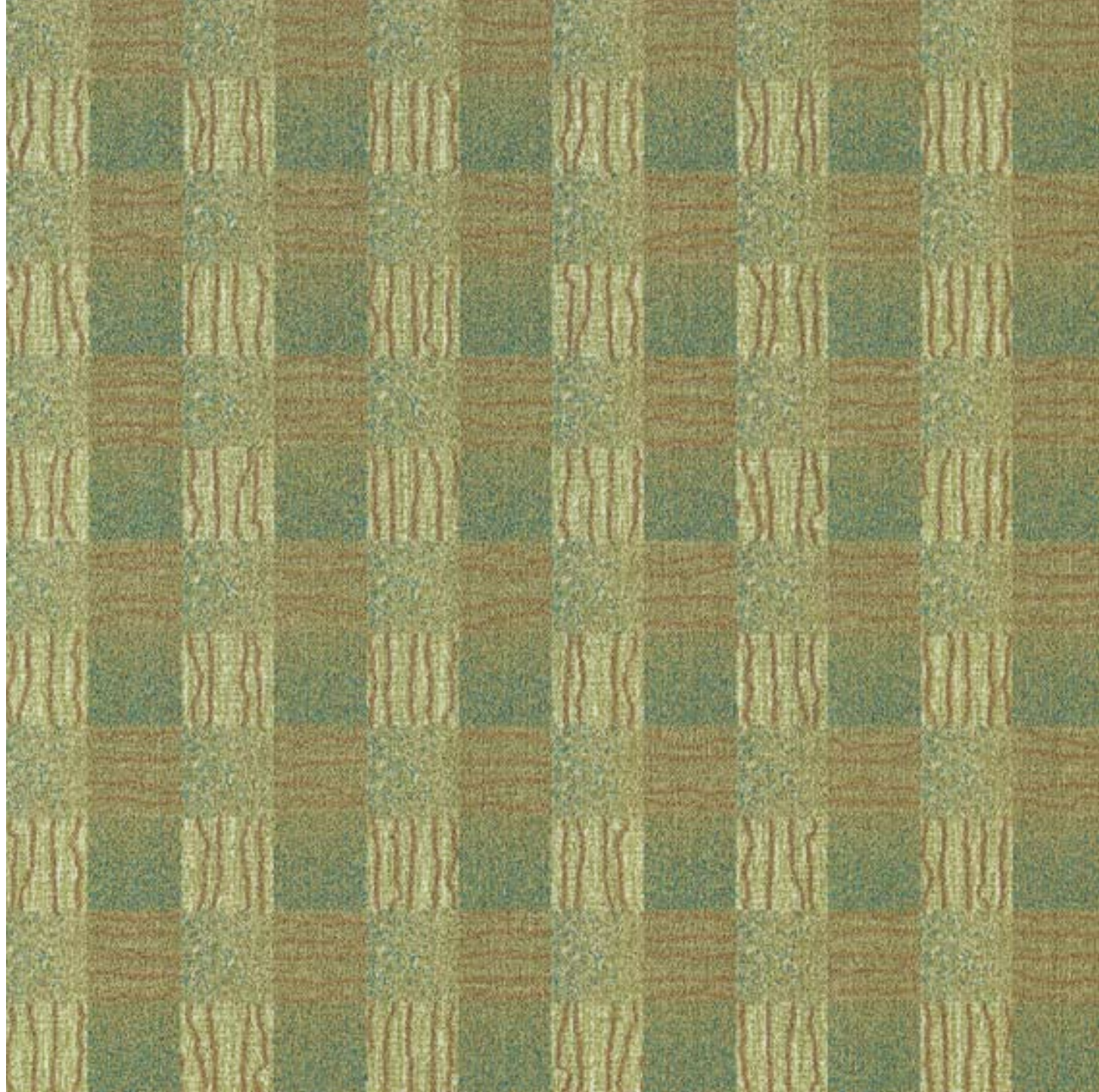




Aqua Viva | Color shown: 107 | Citrus



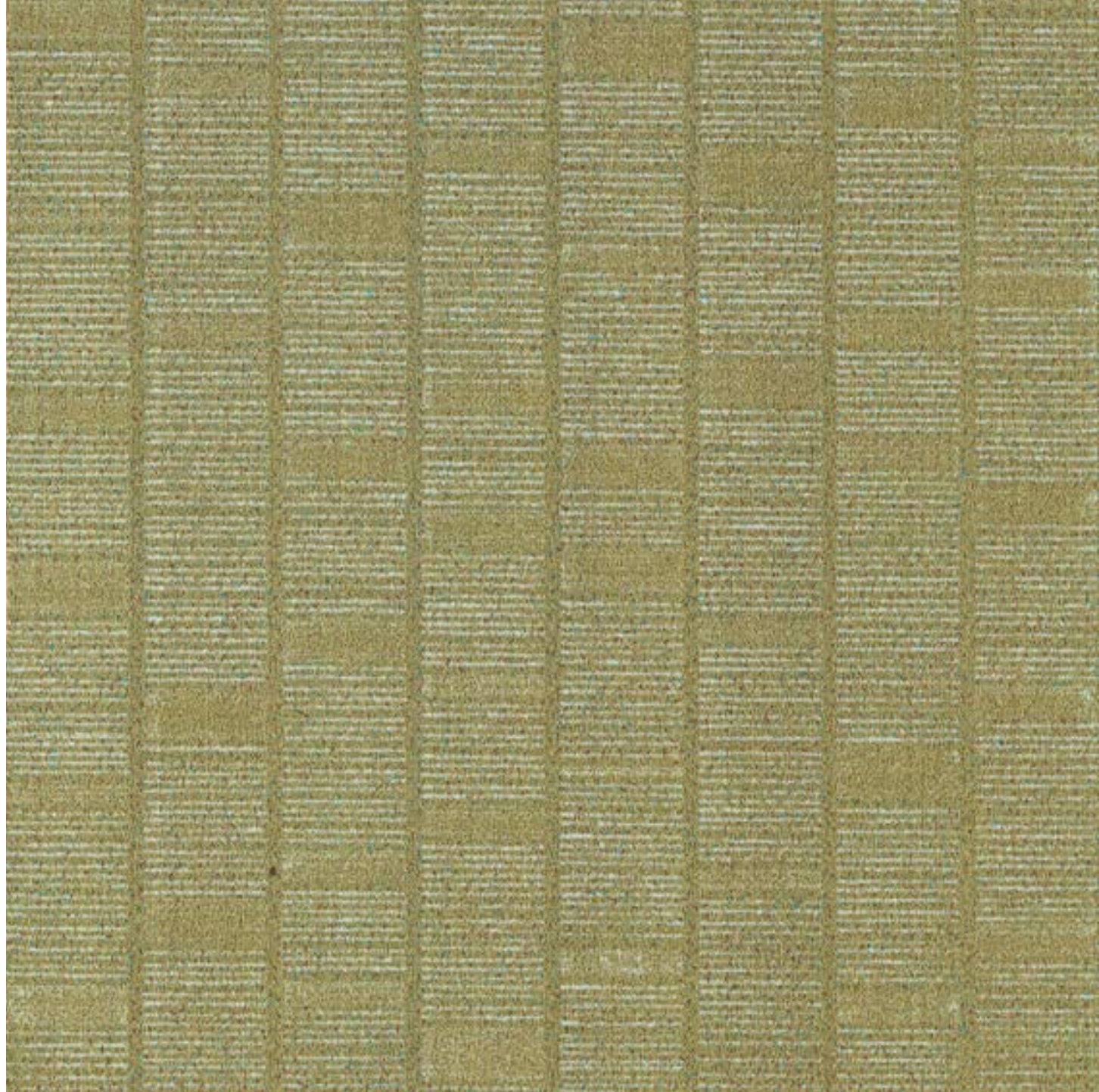




Awareness | Color shown: 104 | Citrus

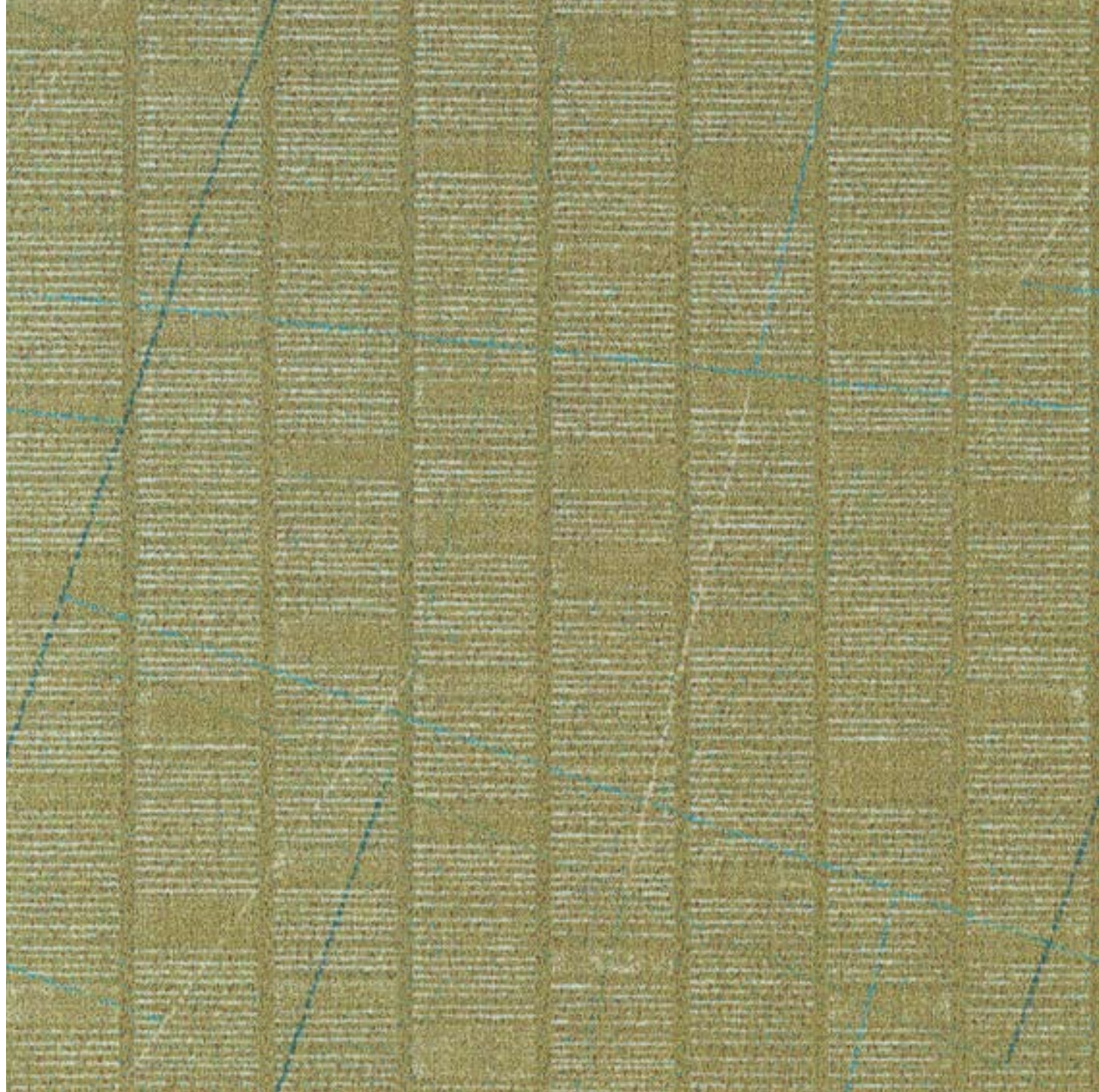






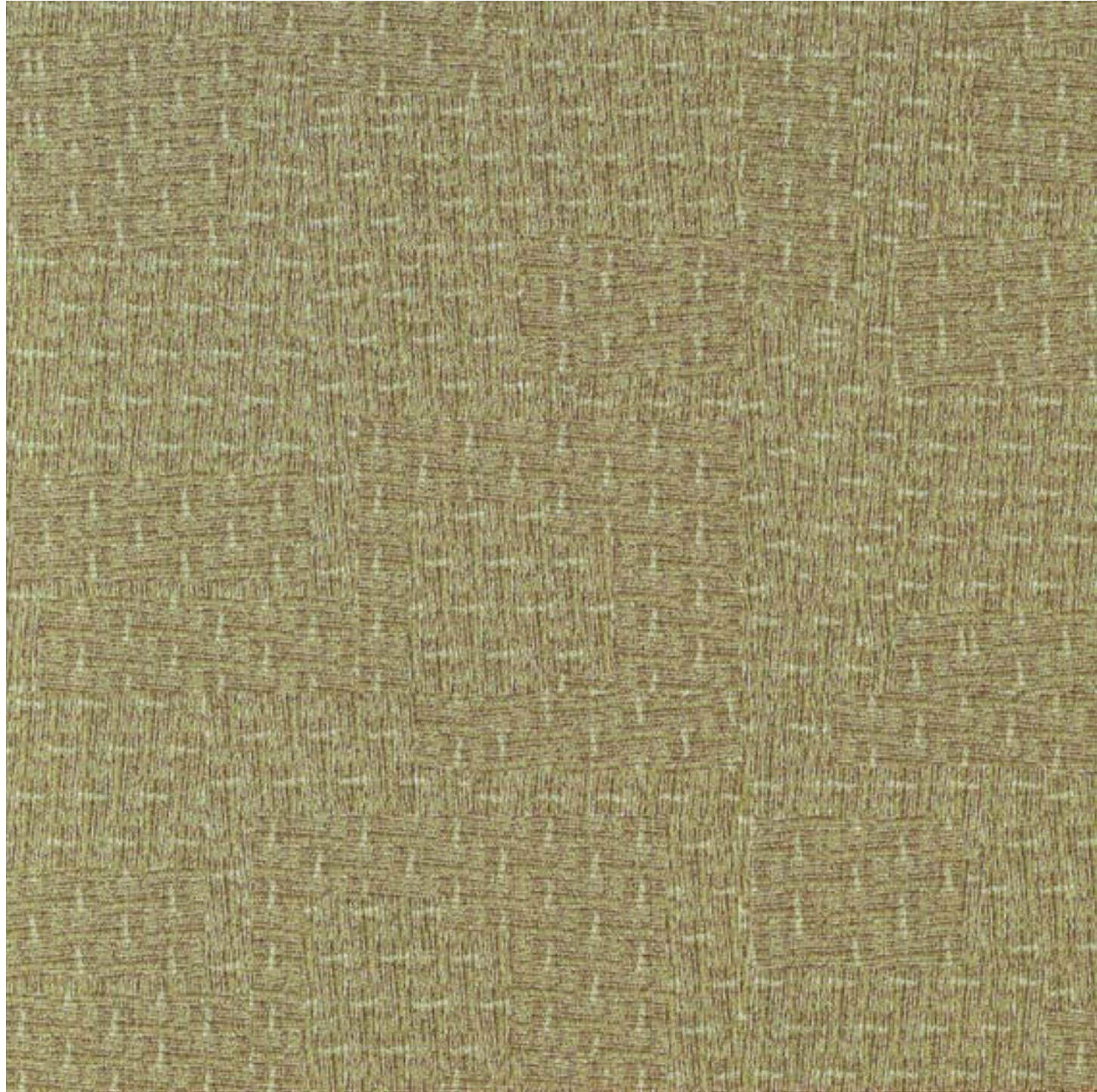
Relaxation | Color shown: 101 | Citrus





Revitalization | Color shown: 102 | Citrus



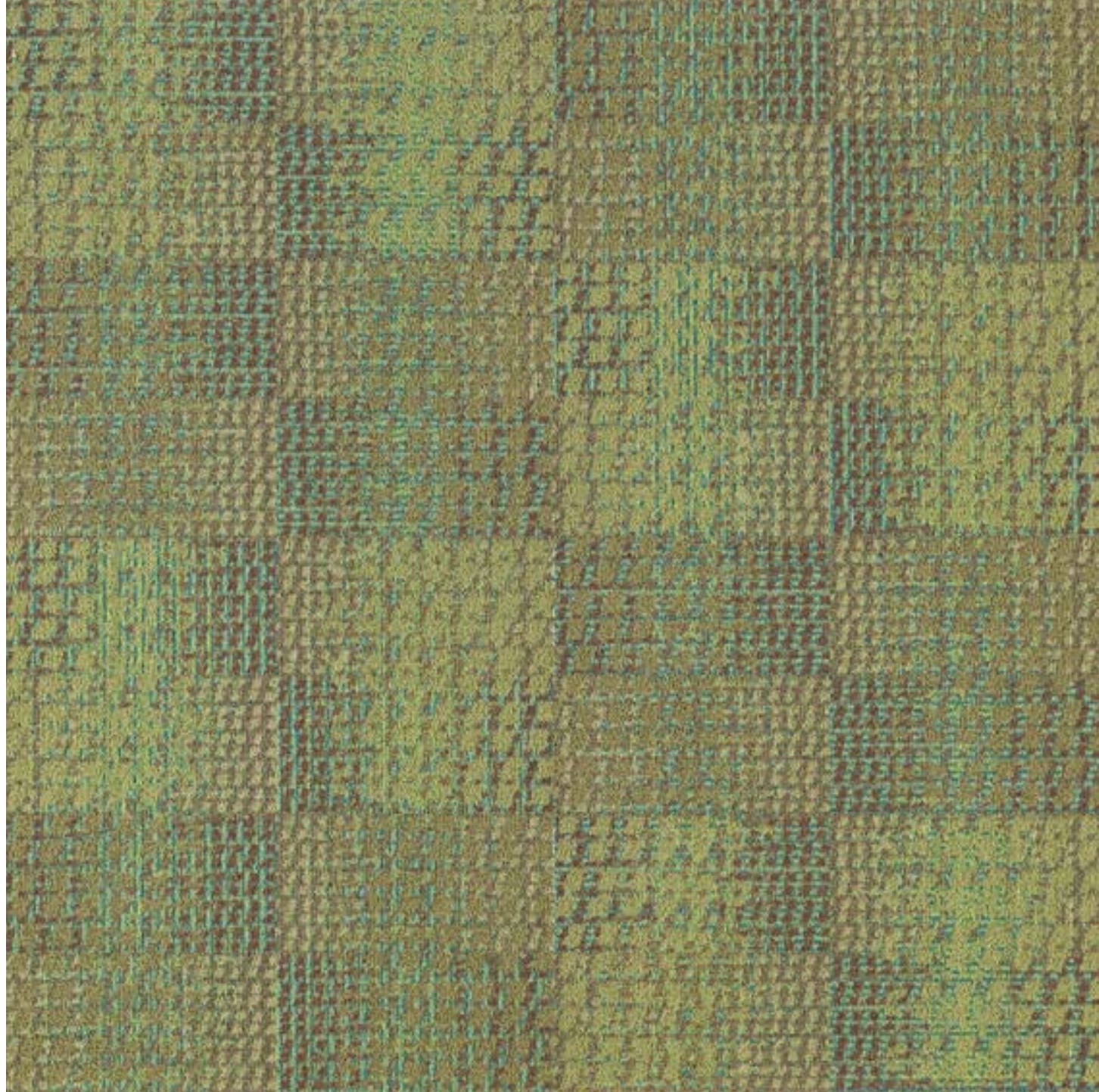


Awareness | Color shown: 103 | Citrus

This pattern contains subtle textural variations that become more apparent in larger open spaces. It is suggested that it be used for borders, insets or in small areas only.



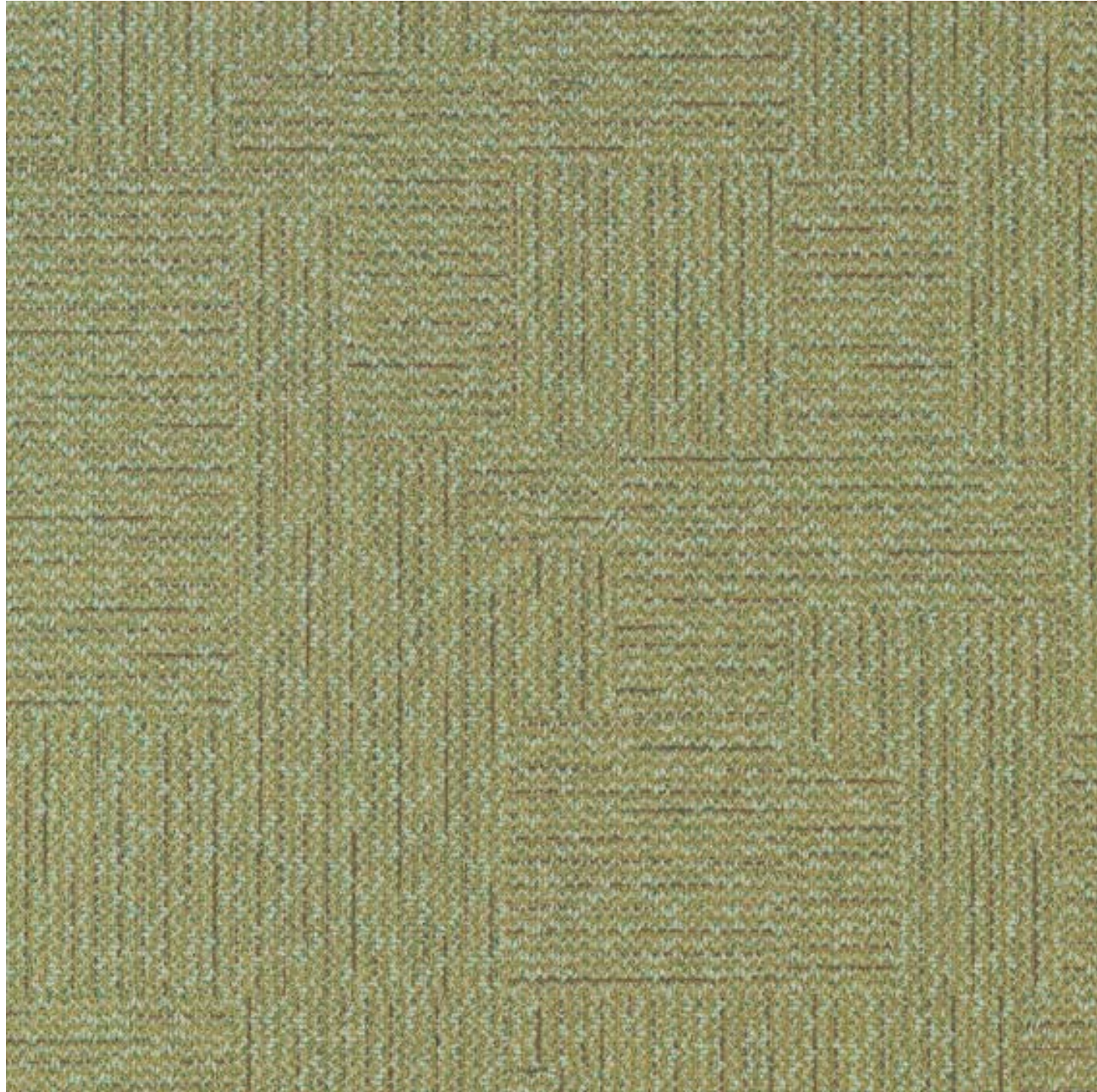




Ascendance | Color shown: 106 | Citrus







Awareness | Color shown: 105 | Citrus

This pattern contains subtle textural variations that become more apparent in larger open spaces. It is suggested that it be used for borders, insets or in small areas only.





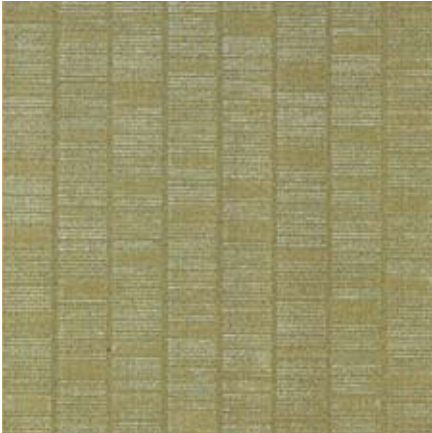
colors





citrus

OLIVE TEAL RUST COMBINATIONS  
P.6990



Relaxation | Color 101



Revitalization | Color 102



Repose | Color 103



Awareness | Color 104



Lifestyles | Color 105



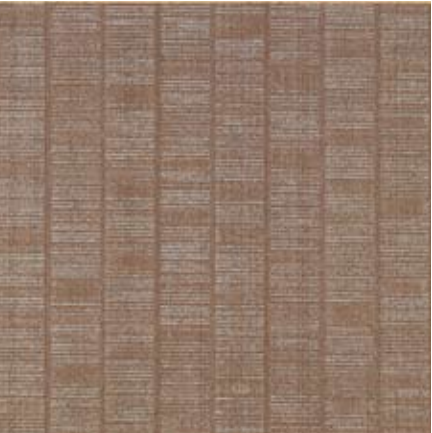
Ascendance | Color 106



Aqua Viva | Color 107

pebble

RUST GOLD TURQUOISE COMBINATIONS  
P.6990



Relaxation | Color 201



Revitalization | Color 202



Repose | Color 203



Awareness | Color 204



Lifestyles | Color 205



Ascendance | Color 206



Aqua Viva | Color 207

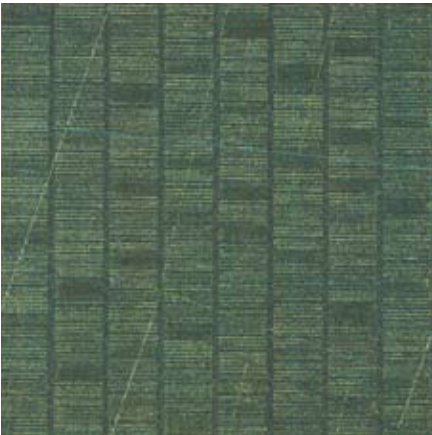


aloe vera

SAGE RUST PLUM COMBINATIONS  
P.6990



Relaxation | Color 301



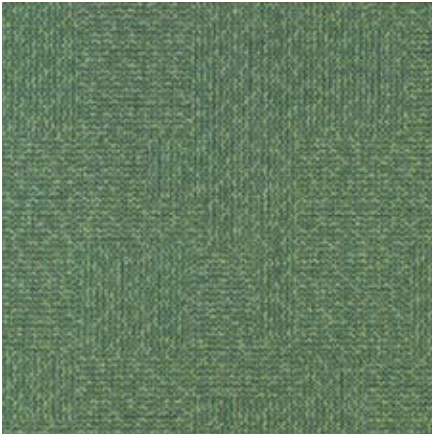
Revitalization | Color 302



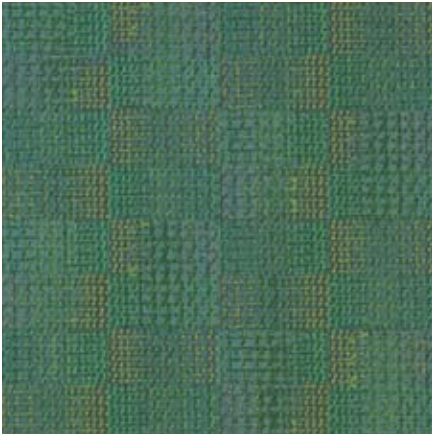
Repose | Color 303



Awareness | Color 304



Lifestyles | Color 305



Ascendance | Color 306



Aqua Viva | Color 307

chocolate

PURPLE OLIVE GREY COMBINATIONS  
P.6990



Relaxation | Color 401



Revitalization | Color 402



Repose | Color 403



Awareness | Color 404



Lifestyles | Color 405



Ascendance | Color 406



Aqua Viva | Color 407



flaxseed

TEAL MINT GOLD COMBINATIONS  
P.6990



Relaxation | Color 501



Revitalization | Color 502



Repose | Color 503



Awareness | Color 504



Lifestyles | Color 505



Ascendance | Color 506



Aqua Viva | Color 507

chicory

BLUE GREY COMBINATIONS  
P.6990



Relaxation | Color 601



Revitalization | Color 602



Repose | Color 603



Awareness | Color 604



Lifestyles | Color 605



Ascendance | Color 606

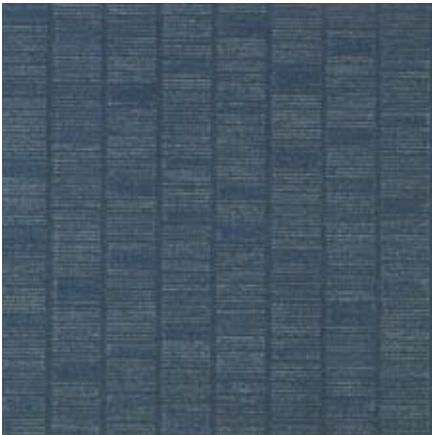


Aqua Viva | Color 607



moonflower

MINT PURPLE GOLD AQUA COMBINATIONS  
P.6990



Relaxation | Color 701



Revitalization | Color 702



Repose | Color 703



Awareness | Color 704



Lifestyles | Color 705



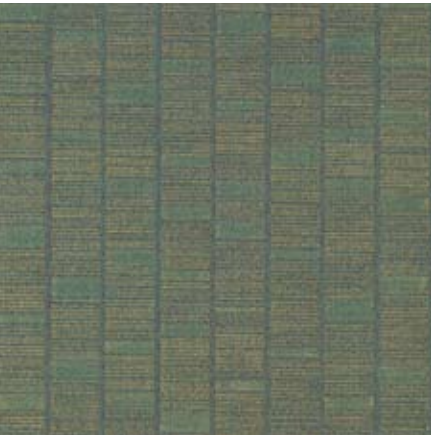
Ascendance | Color 706



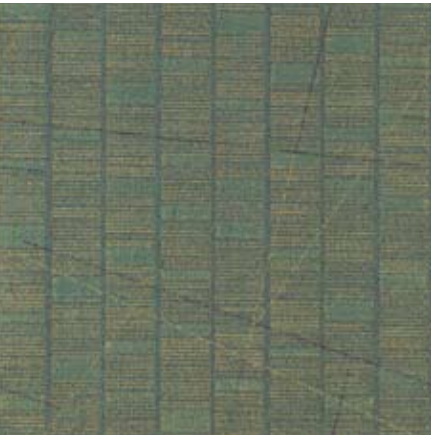
Aqua Viva | Color 707

jasmine

LAVENDER PURPLE AQUA COMBINATIONS  
P.6990



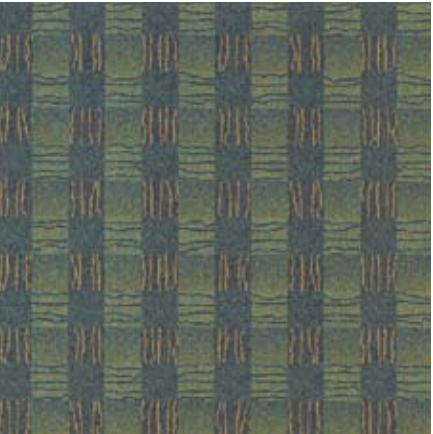
Relaxation | Color 801



Revitalization | Color 802



Repose | Color 803



Awareness | Color 804



Lifestyles | Color 805



Ascendance | Color 806



Aqua Viva | Color 807



zinc

RUST GOLD TURQUOISE COMBINATIONS  
P.6990



Relaxation | Color 901



Revitalization | Color 902



Repose | Color 903



Awareness | Color 904



Lifestyles | Color 905



Ascendance | Color 906



Aqua Viva | Color 907

Choose beauty. Find longevity.



Santé™ cXc® stands up under extreme conditions

Rolling traffic. Limited hours for maintenance. Wet spills, food spills and worse. These tough realities meet their match in the toughest carpet ever engineered. We call this construction cXc — carpet for extreme conditions — and it’s how we build every tile in the Milliken Santé healthcare collection.

Using a high-twist fiber and tight, dense construction, cXc delivers underfoot comfort with extraordinary performance. In fact, cXc carpets have been proven to have a longer usable life and outperform other carpets.

Warranted to last

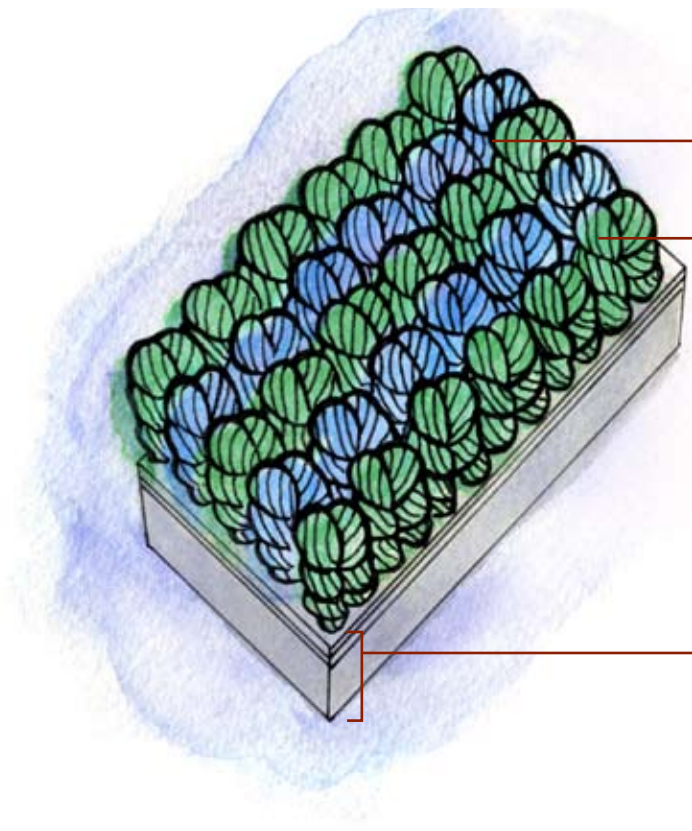
We’re so confident cXc can meet your loftiest expectations, we’ve backed it with some of the most comprehensive warranties ever offered.

Lifetime warranties

- Face Fiber Wear
- Staining / Soiling Resistance (StainSmart®)
- Color Pattern Permanency
- Delamination of Backing
- Edge Ravel
- Tuft Bind
- Floor Compatibility
- Antistatic
- Antimicrobial Protection (AlphaSan®)
- Flammability
- Cushion Resiliency
- Dimensional Stability
- Floor Release
- Moisture Resistance
- TractionBack®
- Bleach Resistance (ColorSeal®)

Additional certifications and warranties

- “Severe” rating for appearance retention
- CRI green label plus compliance
- 10-year sustainable image assurance
- No PVC present in any components



FIBER - Invista™ Antron® Legacy fiber for strength, durability and a natural feel.

YARN - high-twist, heat-set to stabilize pile configuration, increase resiliency and ensure maximum performance for the life of the carpet.

CONSTRUCTION - a dense, tight and low-pile construction provides ease of maintenance, heightened appearance retention and superior roller mobility.

PROPRIETARY FINISHES - contains antimicrobial power of AlphaSan®, the balanced soiling and stain fighting power of StainSmart® and ColorSeal® which is resistant to bleach and exceptional with colorfastness

BACKING - PerformaBac™, specifically engineered for high performance environments, is PVC free, ensures underfoot comfort and includes a moisture barrier that prevents fluids from penetrating the backing.





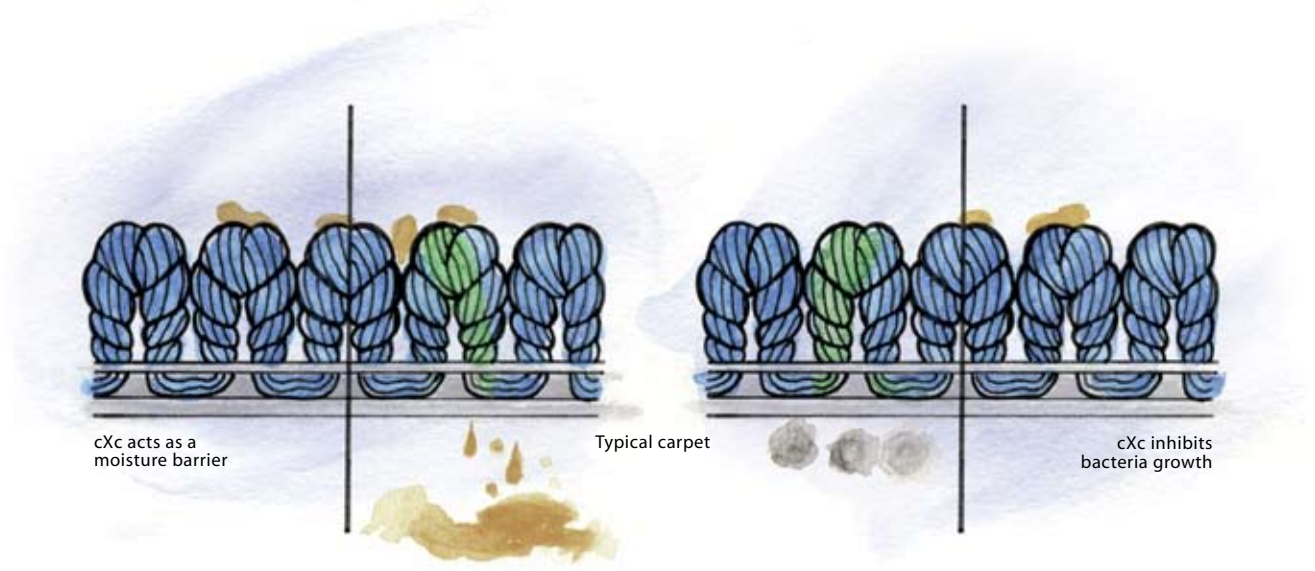
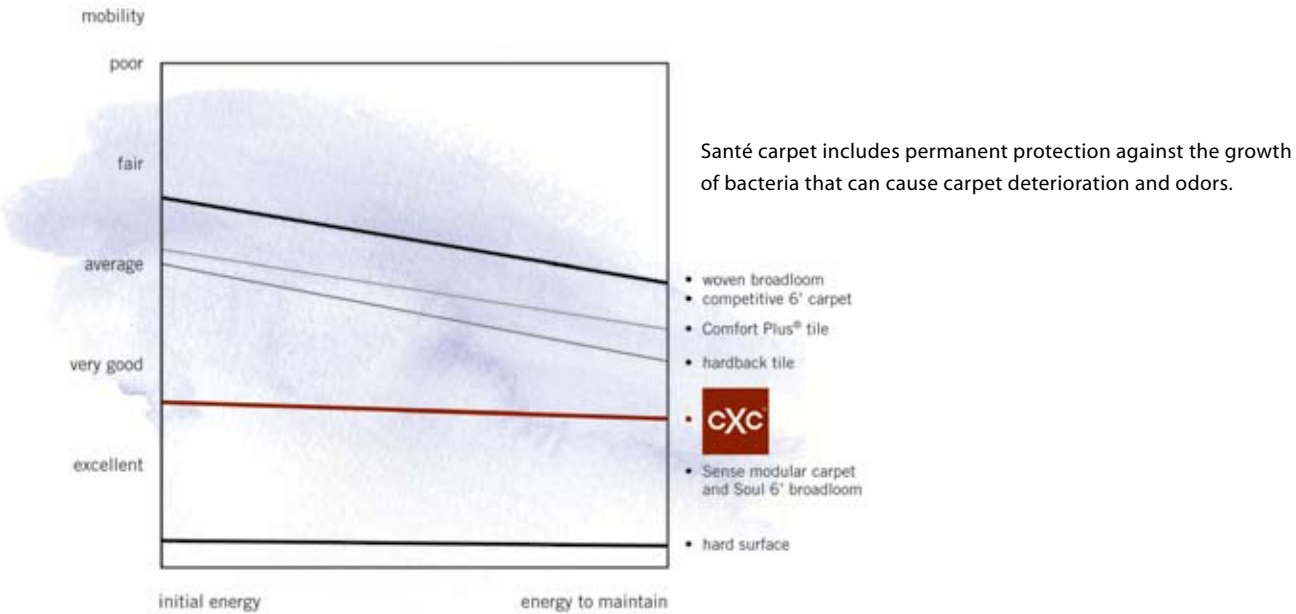


### The modular cXc® advantage

Any carpet can help absorb sound, creating a quieter, more therapeutic environment, yet the benefits of Milliken modular cXc go well beyond. Carts, equipment, wheelchairs and gurneys roll smoothly over its tight construction. And you'll never see a wrinkle, split seam or pattern mismatch to interrupt the flow.

Because we build cXc in 36" square tiles, you retain under-floor access, and should a tile need replacement, you can act right away without disrupting normal activity. Each tile has integrated backing for easy installation, and because the tiles are rigid, they won't stretch or pull out of shape. Tiles stay where you put them, and patterns stay perfectly matched.

The cXc backing delivers more than convenience. It's built with a moisture barrier to keep fluids on the surface for easy clean-up, which can add years to your floor's useful life. We've also added stain blocker and bleach resistance to the fibers for a healthier, more easily-maintained surface.



Expedite the moving of patients and equipment with Santé™, independently tested and proven to outperform other carpets in roller mobility.



Green products for good health

Our eco heritage spans more than 100 years. Moving forward, it drives our commitment to design sustainable products that will serve you for a long, long time, even in busy healthcare environments. Our PVC and chlorine free products carry the most stringent green certifications for Indoor Air Quality.

Milliken leads the industry in setting benchmarks in green manufacturing and product innovations that respect our Earth while reducing our environmental impact. We're the only carbon negative textile manufacturer, backed by Cleaner and Greener SM/Health & Climate Care certification.

Zero Waste, alternative energy, Trees for All and a No Carpet to Landfill Pledge demonstrate our holistic support for healthy interiors and a healthy planet. No other carpet contributes more toward LEED®, a yardstick for better living.

Choose Milliken. Be well.

Specifications and details

SPECIFICATIONS (36” x 36” cXc® Modular with PerformaBac™ ES and TractionBack®): Specifications subject to normal manufacturing tolerances and may be changed without prior notice. Copies of actual test results available upon request.

P/6990 Santé™

Construction	Tufted, Textured Loop Pile
Face Fiber	100% Invista™ Antron® Legacy Type 6,6 Nylon
	Twisted and Heat Set for Maximum Performance
	StainSmart® and Invista DuraTech®
	ColorSeal®
	AlphaSan® Built-In Protection
	Millitron®
	20 oz./sq.yd. (678.1 g./sq.m.)
	1/13 (51.2/10 cm.)
	11.0/in. (43.3/10 cm.)
	156.0/sq.in. (2,416.6/100 sq.cm.)
	0.09 in. (2.29 mm.) avg.
	PVC-Free PerformaBac™ ES with TractionBack®
Nominal Total Thickness	0.26 in. (6.6 mm.)
Tile Size	36 x 36 in. (914.4 x 914.4 mm.)
Nominal Total Weight	98.2 oz./sq.yd. (3,329.7 g./sq.m.)
Flammability (Radiant Panel ASTM-E-648)	≥ 0.45 (Class I)
Smoke Density (NFPA-258-T or ASTM-E-662)	≤ 450
Methenamine Pill Test (CPSC FF-1-70 or ASTM D 2859)	Self-Extinguishing
Lightfastness (AATCC 16E)	≥ 4.0 at 80 hrs.
Crocking (AATCC 165)	≥ 4.0 wet or dry
Static Electricity (AATCC-134) 20% R.H.,70° F.	≤ 3.5 KV, Permanent Conductive Fiber
Dimensional Stability - Aachener Test (DIN Standard 54318)	≤ 0.2%
Appearance Retention Rating (CRI TM101)	Severe Use
Recommended Maintenance	MilliCare® Textile and Carpet Care Service Network
Indoor Air Quality – CRI Green Label Plus™	GLP0793, Carpet Category 5Y

Milliken is a carbon negative manufacturer and operates with zero waste to landfill. All Milliken modular carpets are renewable through Earth Square® and all components are recyclable. No other modular carpet contributes more to LEED certification. Milliken modular carpet with ES (Environmentally Sustainable) backing includes up to 35% recycled content by total product weight. With ESP Backing, at least 10% of this recycled content is post-consumer. This modular carpet with ES backing has been certified as an Environmentally Preferable Product, SCS Sustainable Choice Gold. With the optional ESP backing (P/5979), this product has been certified SCS Sustainable Choice Platinum and California Platinum.

This cushion-back carpet tile product is covered by one or more patents, published applications and/or patents pending.



This modular carpet with ES backing has been certified as an Environmentally Preferable Product, SCS Sustainable Choice Gold



With the optional ESP backing (P/5979), this product has been certified SCS Sustainable Choice Platinum and California Platinum.





[www.millikencarpet.com/healthcare](http://www.millikencarpet.com/healthcare) | 877.880.5593



MODULAR CARPET FOR HEALTHCARE