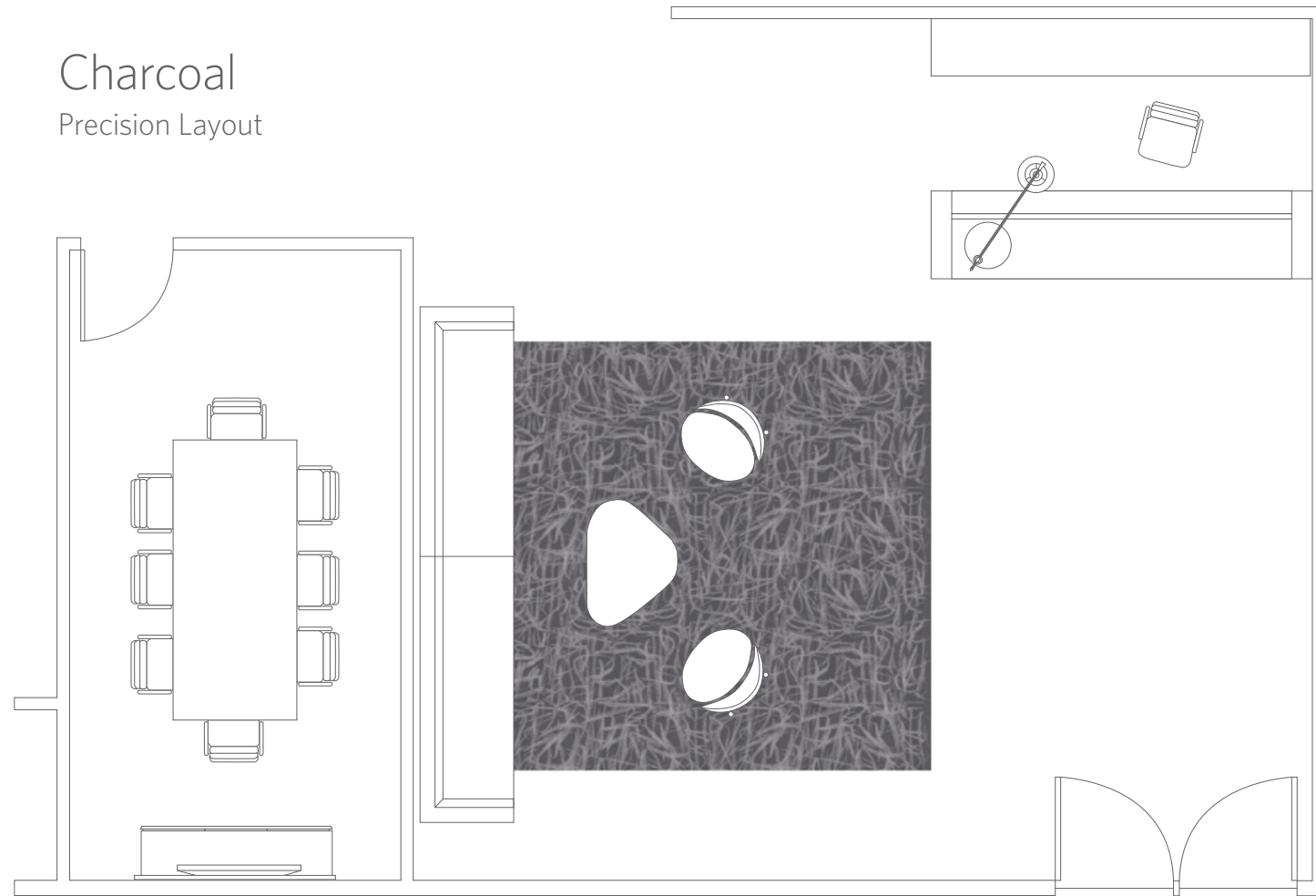


**ART MEDIA**  
Installation Concepts

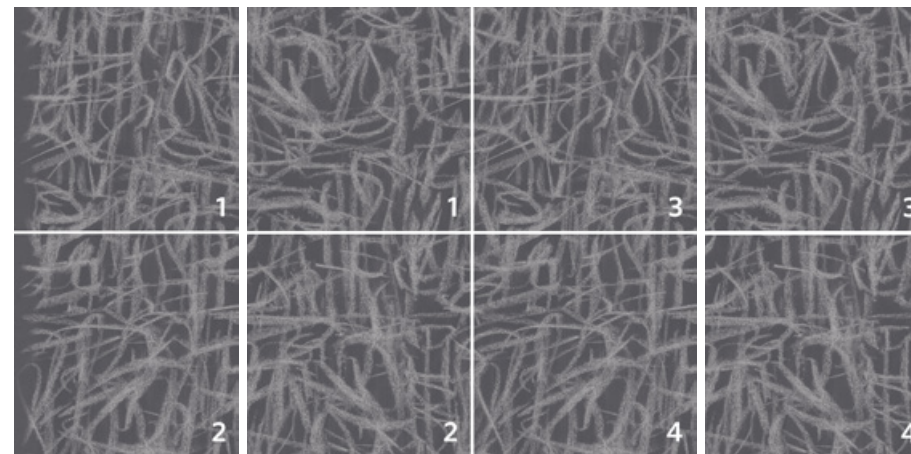
# Charcoal

## Precision Layout



**Charcoal** is a 4-tile precision set pattern repeat that perfectly achieves drama through large scale pattern. This product is labeled numerically 1-4 on the back of each tile and comes with an installation pattern repeat diagram to ensure all tiles are placed in the appropriate location.

Additionally, as an optional accessory or trim tile, Charcoal *canvas left* or *canvas right* patterns, which feature the perimeter of the artwork where the charcoal fades to the *canvas* edge, are available. This creates opportunities to define circulation, create a white space edge to transition to other modular flooring, or as edge detail to transition to hard surface floor. The pattern consists of a companion *right* or *left* version tile, for all 4 of the tiles. These *canvas* edge tiles are to be installed precisely paired with their corresponding tile.



**canvas left**

4 *canvas* tiles to precision pair with Charcoal tile #1-4 (tiles 3 & 4 not shown)

**Charcoal**

4-tile precision set pattern

**canvas right**

4 *canvas* tiles to precision pair with Charcoal tile #1-4 (tiles 1 & 2 not shown)

*A detailed floor plan is recommended for all installations using the canvas accessory tile. Milliken is pleased to offer assistance with this plan and the tile diagram for your project.*



Charcoal in Gunmetal

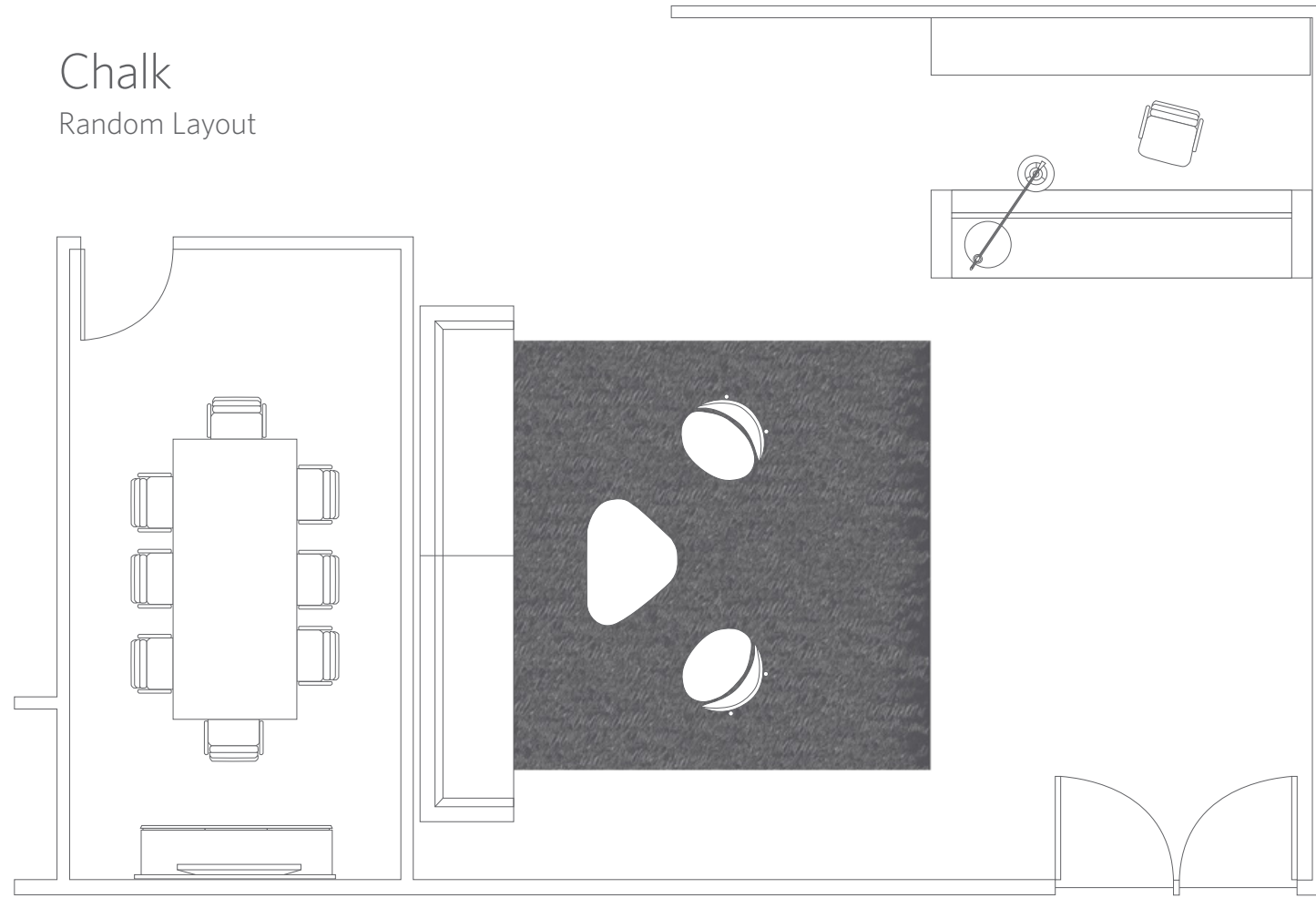




Charcoal in Ash

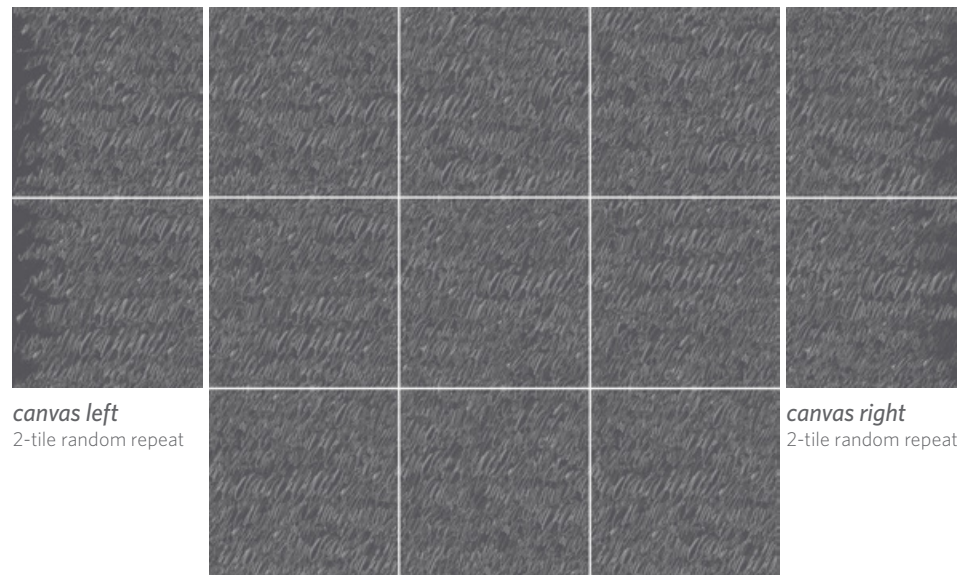
# Chalk

Random Layout



**Chalk** is a random multi-tile repeat. Each tile has edge-to-edge pattern match with unique tile centers. The variety in this design makes each installation one-of-a-kind without additional floor plans or special installation instructions. This design is to be installed random monolithic from the delivery container.

Additionally, as an optional accessory or trim tile, Chalk *canvas left* or *canvas right* patterns, which feature the perimeter of the artwork where the chalk fades to the *canvas* edge, are available. The pattern consists of a two tile repeat, to achieve a randomized effect. These are to be installed randomly along an area to define circulation, create a white space edge to transition to other modular flooring, or as edge detail to transition to hard surface flooring.



*canvas left*  
2-tile random repeat

*canvas right*  
2-tile random repeat

**Chalk**  
9-tile random repeat





Chalk in Dove Grey with *canvas left* accessory pattern

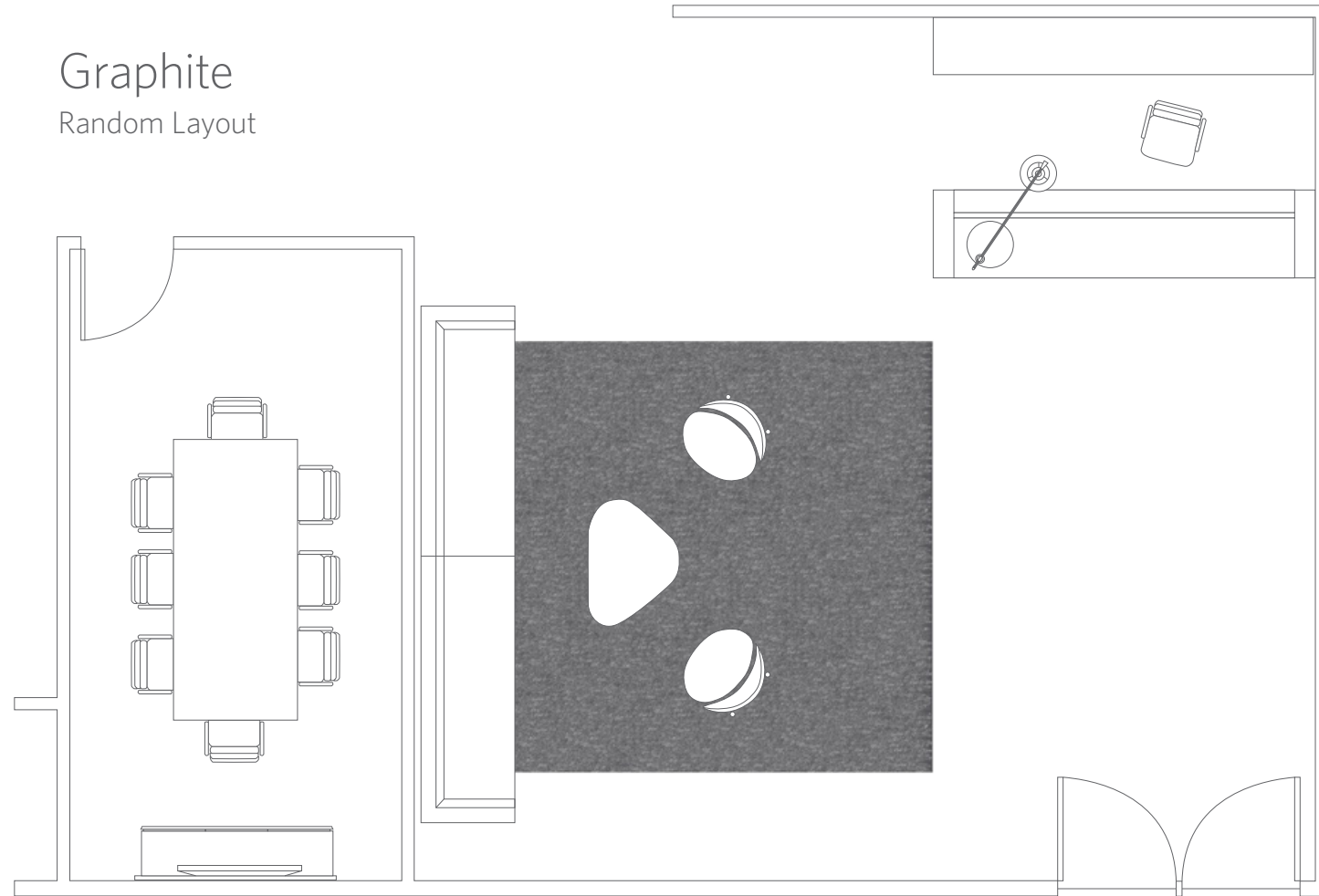




Chalk in Cocoa with *canvas left* accessory pattern

# Graphite

Random Layout



**Graphite** is a random multi-tile repeat. Each tile has edge-to-edge pattern match with unique tile centers. The variety in this design makes each installation one-of-a-kind without additional floor plans or special installation instructions. This design is to be installed random monolithic from the delivery container.

Additionally, as an optional accessory or trim tile, *Graphite canvas left* or *canvas right* patterns, which feature the perimeter of the artwork where the pencil fades to the *canvas* edge, are available. The pattern consists of a two-tile repeat, to achieve a randomized effect. These are to be installed randomly along an area to define circulation, create a white space edge to transition to other modular flooring, or as edge detail to transition to hard surface flooring.



*canvas left*  
2-tile random repeat

*canvas right*  
2-tile random repeat

**Graphite**  
6-tile random repeat





Graphite in Gunmetal with *canvas right* accessory pattern

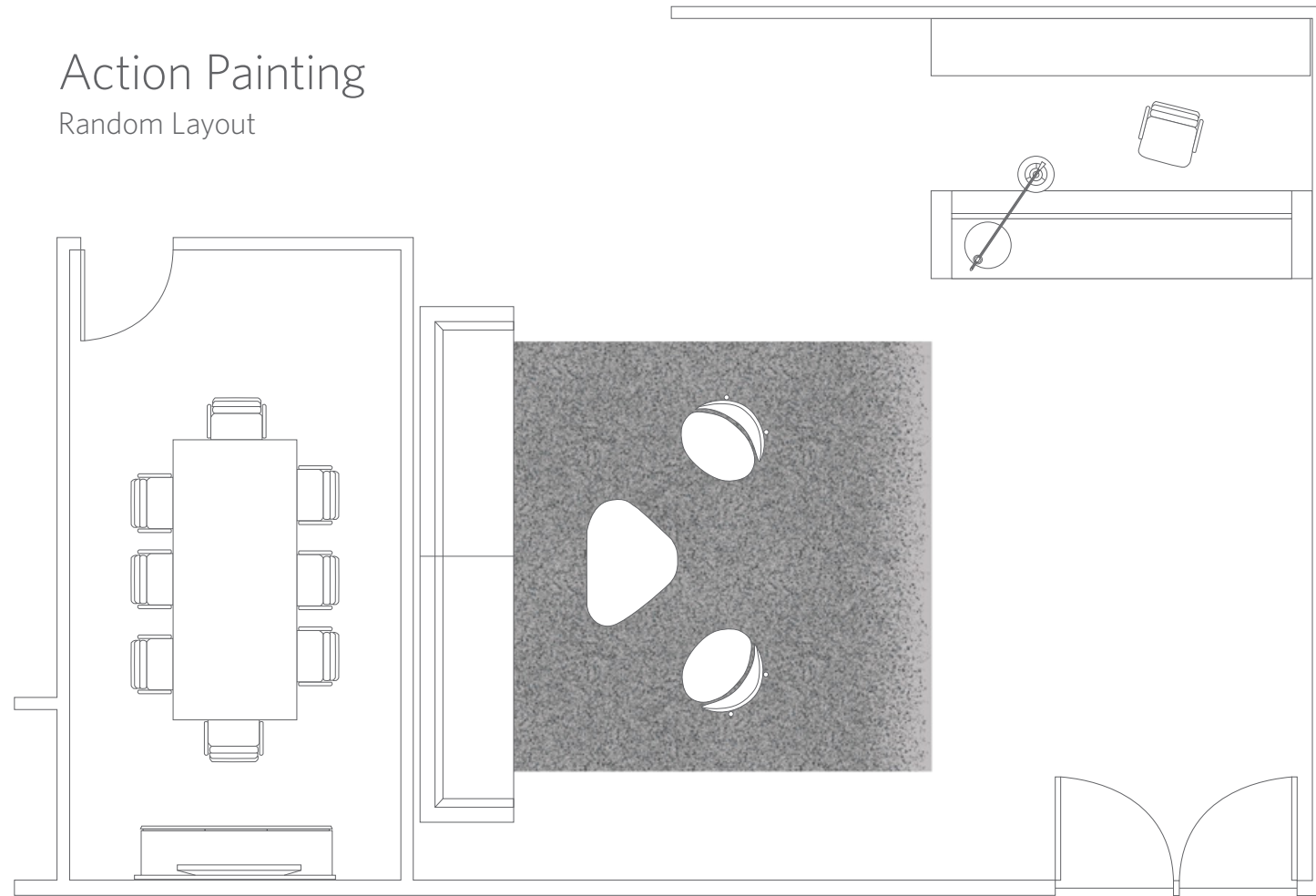


Graphite in Cinnabar with *canvas left* accessory pattern



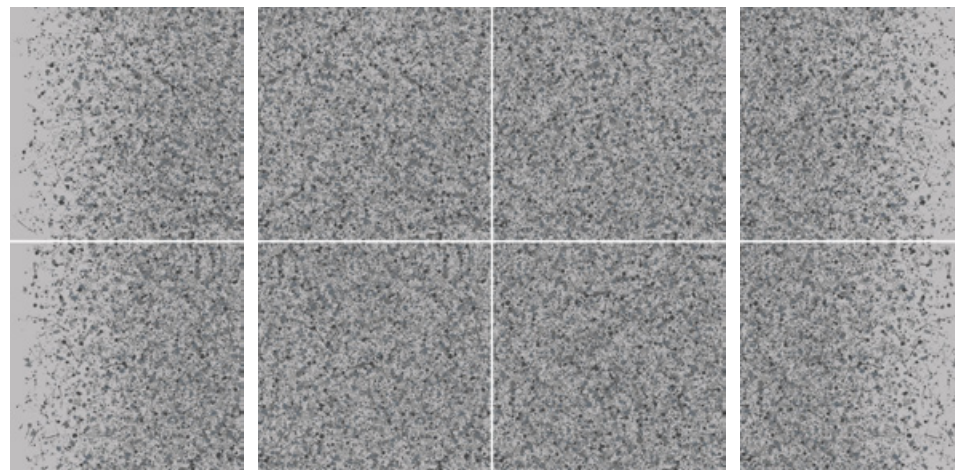
# Action Painting

## Random Layout



**Action Painting** is a random multi-tile repeat. Each tile has edge-to-edge pattern match with unique tile centers. The variety in this design makes each installation one-of-a-kind without additional floor plans or special installation instructions. This design is to be installed random monolithic from the delivery container.

Additionally, as an optional accessory or trim tile, *Action Painting canvas left* or *canvas right* patterns, which feature the perimeter of the artwork where the paint dissipates to the *canvas* edge, are available. The pattern consists of a two tile repeat to achieve a randomized effect. These are to be installed randomly along an area to define circulation, create a white space edge to transition to other modular flooring, or as edge detail to transition to hard surface flooring.



*canvas left*  
2-tile random repeat

**Action Painting**  
4-tile random repeat

*canvas right*  
2-tile random repeat



Action Painting in Van Rijn with *canvas left* accessory pattern





Action Painting in Gamut with *canvas* left accessory pattern





Action Painting in Manganese with *canvas right* accessory pattern

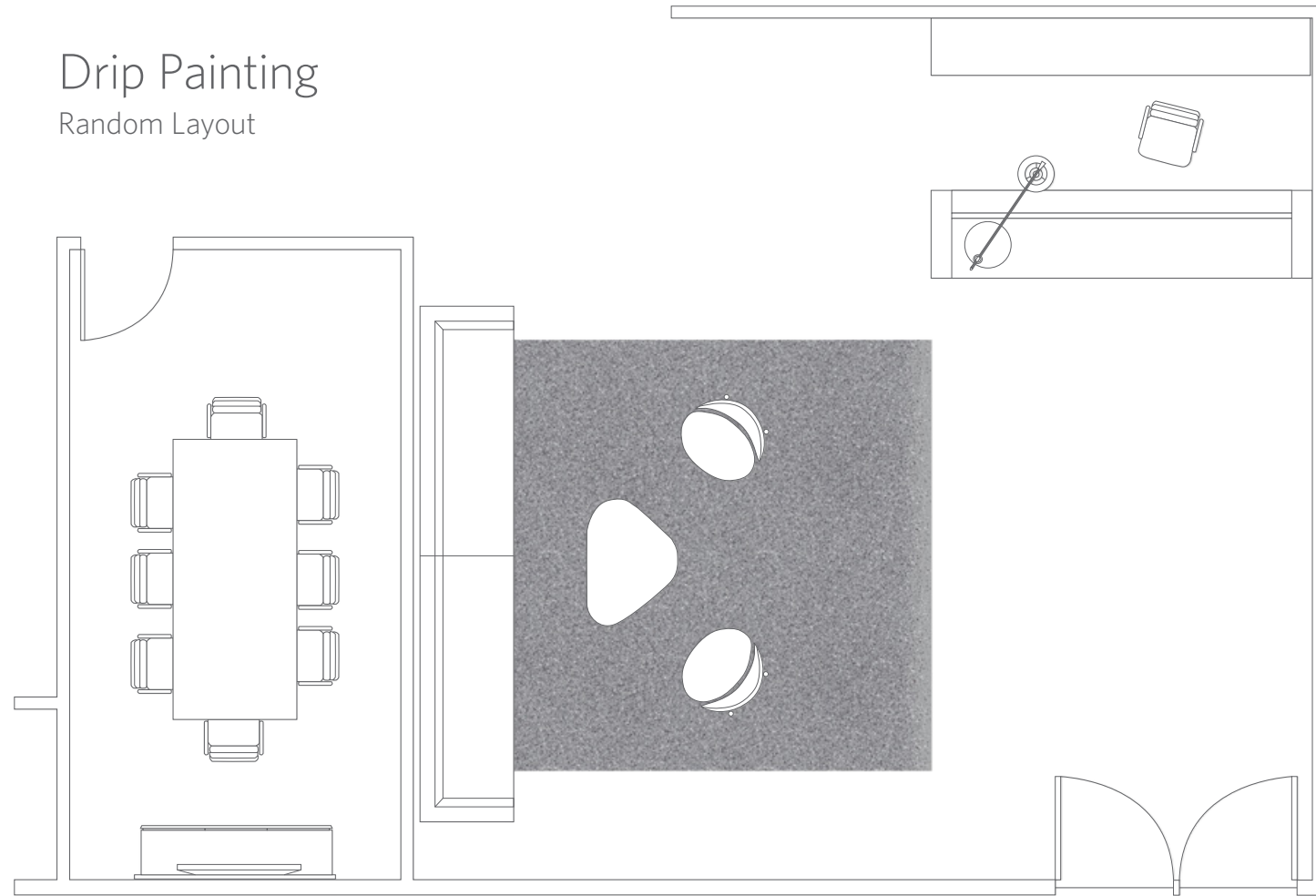




Action Painting in Titan Bluff with *canvas right* accessory pattern

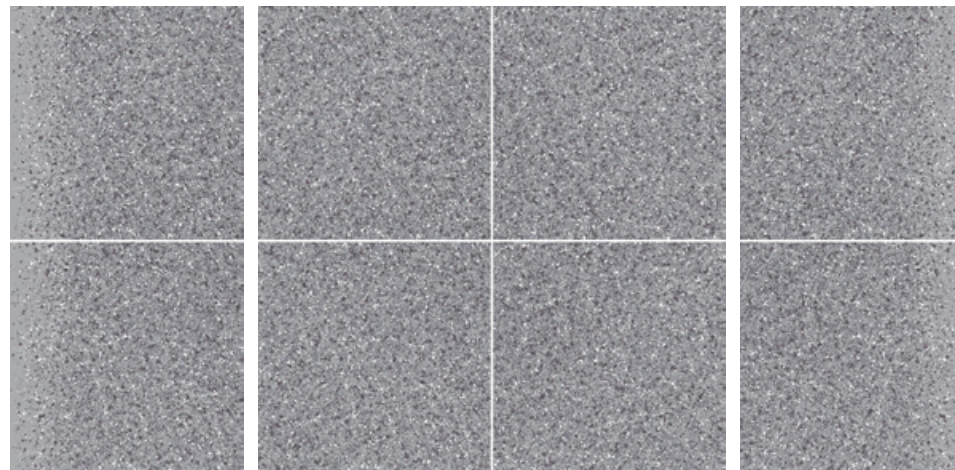
# Drip Painting

## Random Layout



**Drip Painting** is a random pattern with no pattern repeat- every tile is unique. Each tile has edge-to-edge pattern match with unique tile centers. The variety in this design makes each installation one-of-a-kind without additional floor plans or special installation instructions. This design is to be installed random monolithic from the delivery container.

Additionally, as an optional accessory or trim tile, Drip Painting *canvas left* or *canvas right* patterns, which feature the perimeter of the artwork where the paint dissipates to the *canvas* edge, are available. The pattern consists of a two tile repeat to achieve a randomized effect. These are to be installed randomly along an area to define circulation, create a white space edge to transition to other modular flooring, or as edge detail to transition to hard surface flooring.



*canvas left*  
2-tile random repeat

**Drip Painting**  
random - no pattern repeat

*canvas right*  
2-tile random repeat





Drip Painting in Lyart

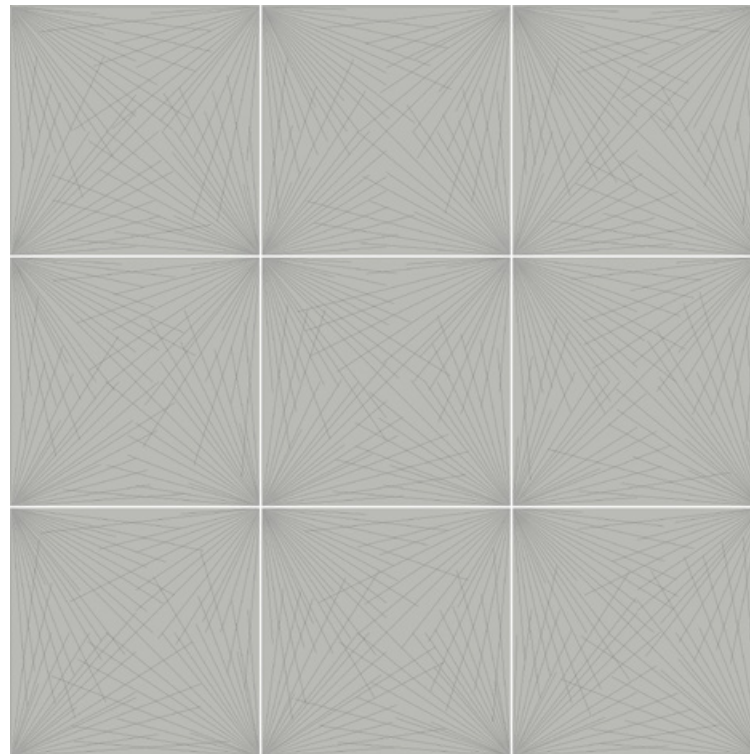
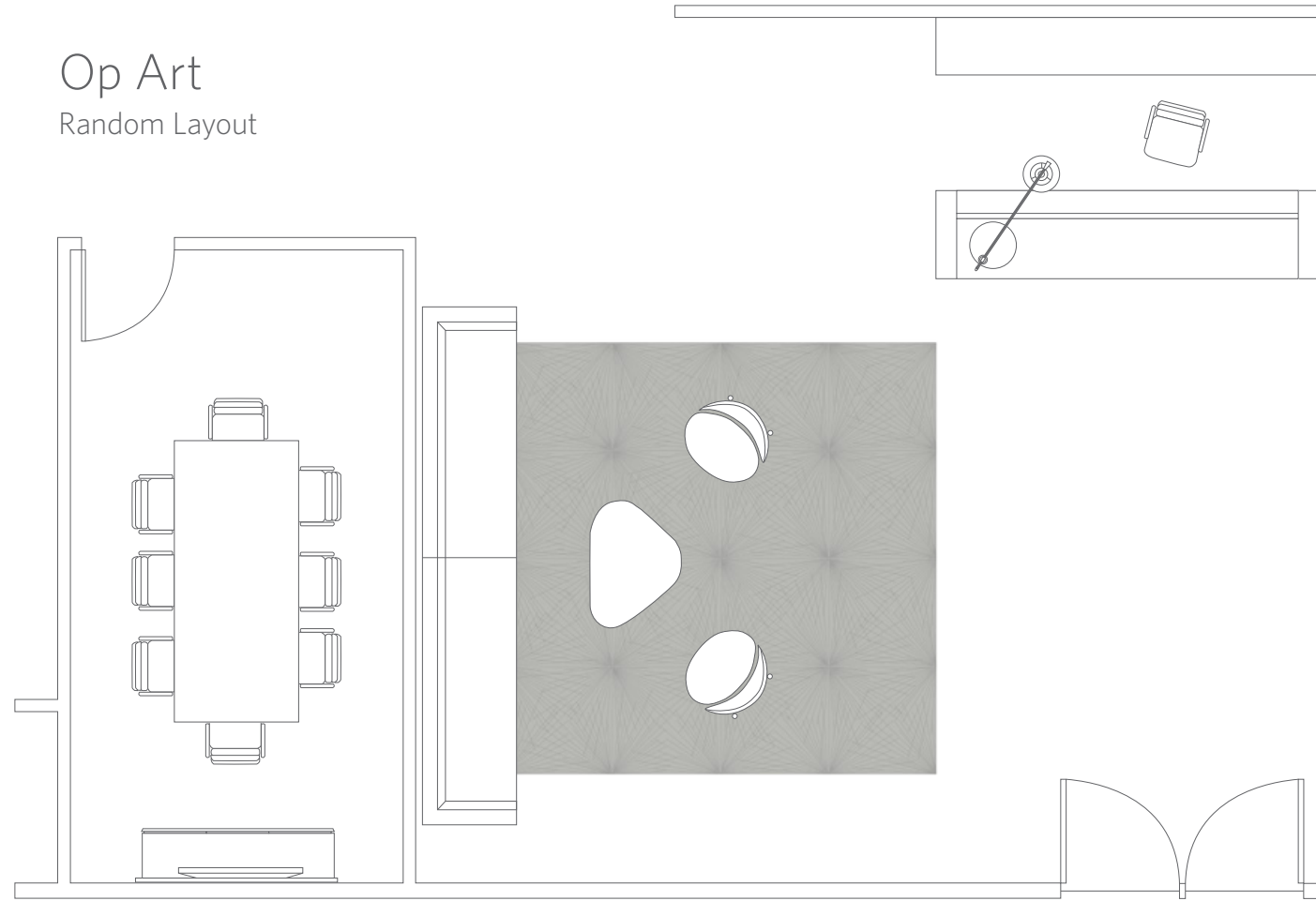


Drip Painting in Phthalo Green



# Op Art

Random Layout



**Op Art**  
9-tile random repeat

**Op Art** is a multi-tile repeat. Each tile has edge-to-edge pattern match with unique tile centers. The variety in this design makes each installation one-of-a-kind without additional floor plans or special installation instructions. This design is to be installed random monolithic from the delivery container.



Op Art in Warp





Op Art in Scintillate





Op Art in Grisaille





Op Art in Flickr

## ART MEDIA

Charcoal / Chalk / Graphite

Action Painting

Drip Painting

Op Art

### Construction

Tufted, Loop/Tip-Shear

### Tile Size

1 m x 1 m (39.4" x 39.4")

### Yarn Type

Milliken-Certified WearOn® Nylon Type 6,6

### Stain Repel / Stain Resist / Soil Release

StainSmart®

### Tufted Face Weight

27 oz/yd<sup>2</sup> (915.5 g/m<sup>2</sup>)

### Finished Pile Height

0.17" (4.3 mm)

### Average Density

5,718

### Standard Backing

PVC-Free Comfort Plus® ES cushion

### Recommended Installation Method



MONOLITHIC

This cushion-back carpet tile product is covered by one or more patents, published applications and/or patents pending. Specifications are subject to normal manufacturing tolerances and may be changed without prior notice.

