

PASTE UP

Art Crime / Negotiator
Public Reaction / Space Invader
Tessellate



Art Crime



Negotiator



Public Reaction



Space Invader



Tessellate



PRICE PRICE

Milliken™



INSPIRED.

Like a city that perpetually builds upon itself, the spray-painted images on the concrete wall are re-graffitied on a nightly basis. The newer additions partially obscure the older ones but they also, in an odd way, enhance them. Like looking into a deep well of layered art, you can see into the images of last year, last month, last week, overlain with the fresh expressions of today.

Negotiator in Black Book (left) & Tessellate in Razed Light (right), monolithic tile installation



Public Reaction (left) & Negotiator (right) in Symbol, monolithic tile installation



Tessellate in Dubs, monolithic tile installation



Art Crime in Dubs, monolithic tile installation



Space Invader in Dubs, monolithic tile installation



Space Invader in Fog Shadow (*left & right*) & Formwork in Render (*middle*), monolithic tile installation



Get more at millikencarpetsamplestudio.com

Public Reaction in Crew, monolithic tile installation

Negotiator



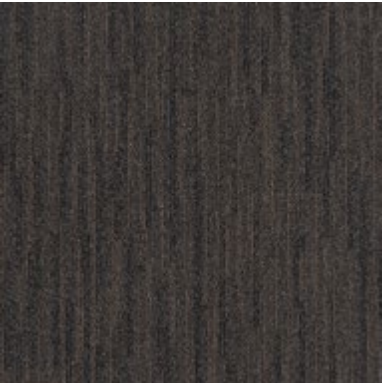
NEG59-47 GRAF
(Public Reaction PUB59-47)



NEG94-93 HOLLOWS
(Public Reaction PUB94-93)



NEG121-15 ALL CITY
(Public Reaction PUB121-15)



NEG133-59 LOCK-ON
(Public Reaction PUB133-59)



NEG79-120 PUBLIC SPACE
(Public Reaction PUB79-120)



NEG97-122 BLOCKED
(Public Reaction PUB97-122)



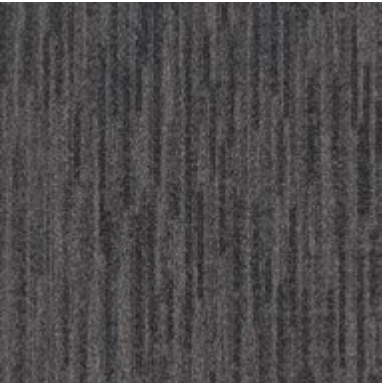
NEG13-118 SYMBOL
(Public Reaction PUB13-118)



NEG67-108 GET UP
(Public Reaction PUB67-108)



NEG108-6 CREW
(Public Reaction PUB108-6)



NEG67-119 BLACK BOOK
(Public Reaction PUB67-119)



NEG25 PERSPEX
(Public Reaction PUB25)



NEG171-25 SUBCULTURE
(Public Reaction PUB171-25)

Tessellate



TES59-47 UNDERGROUND (Art Crime
ARC59-47, Space Invader SPA59-47)



TES94-93 SUBVERSION (Art Crime
ARC94-93, Space Invader SPA94-93)



TES121-15 ADVOCATE (Art Crime
ARC121-15, Space Invader SPA121-15)



TES133-59 FOG SHADOW (Art Crime
ARC133-59, Space Invader SPA133-59)



TES79-120 BOX CAR (Art Crime ARC79-
120, Space Invader SPA79-120)



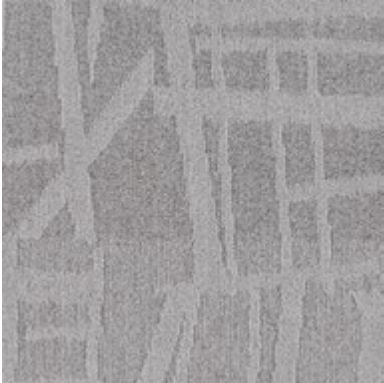
TES97-122 ACCIDENTAL ARCHITECT (Art
Crime ARC97-122, Space Invader SPA97-122)



TES13-118 DUBS (Art Crime ARC13-118,
Space Invader SPA13-118)



TES67-108 METRO STOP (Art Crime
ARC67-108, Space Invader SPA67-108)



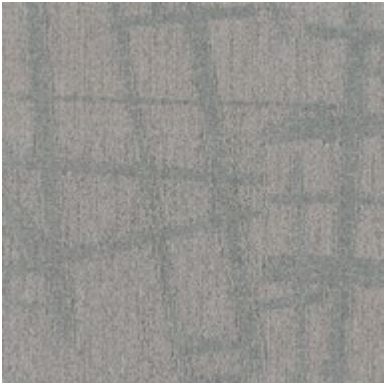
TES108-6 SCATTERED SUN (Art Crime
ARC108-6, Space Invader SPA108-6)



TES67-119 RAZED LIGHT (Art Crime
ARC67-119, Space Invader SPA67-119)



TES25 BRILLIANT BURNER (Art Crime
ARC25, Space Invader SPA25)



TES171-25 LIGHT POST (Art Crime
ARC171-25, Space Invader SPA171-25)

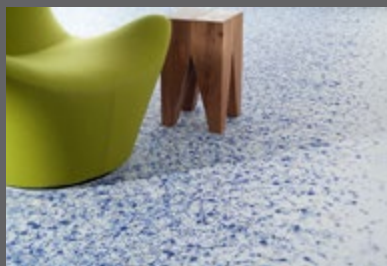
PASTE UP

Art Crime / Negotiator / Public Reaction
Space Invader / Tessellate

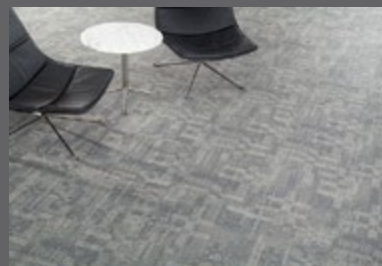
Have you seen our other collections? Visit us online today.



Art Media



Ghost Artist



Inis Mór



Suitable 2.0



Construction

NEG, PUB: Tufted, Textured Loop
ARC, SPA, TES: Tufted, Textured
Tip-Shear

Tile Size

50 cm x 50 cm (19.7" x 19.7")

Yarn Type

Universal® Fibers Solution-Dyed Nylon
Type 6,6

Stain Repel / Stain Resist / Soil Release

StainSmart®

Tufted Face Weight

Loop: 24 oz/yd² (814 g/m²)
Tip-Shear: 28 oz/yd² (949 g/m²)

Finished Pile Height

Loop: 0.11" (2.77 mm)
Tip-Shear: 0.13" (3.18 mm)

Average Density

Loop: 7,927
Tip-Shear: 8,064

Standard Backing

Loop: PVC-Free Underscore™
ES Cushion
Tip-Shear: PVC-Free Comfort Plus®
ES Cushion
Both available with TractionBack®

Texture Appearance Retention Rating (TARR)

NEG, ARC, SPA: Heavy
PUB, TES : Severe

Recommended Installation Method



MONOLITHIC

TractionBack®

Simplify your modular installation with Milliken's patented TractionBack®, an innovative backing system that is faster, more cost efficient, and environmentally superior to wet adhesives and peel-and-stick carpet tile.



This cushion-back carpet tile product is covered by one or more patents, published applications and/or patents pending. Specifications are subject to normal manufacturing tolerances and may be changed without prior notice.

Growing greener for over 100 years.

This product has a UL® Environment 3rd party verified Environmental Product Declaration (EPD). A copy of the EPD is available online at millikencarpet.com/epd and productguide.ulenvironment.com.

Customer Concierge 800.824.2246 | millikencarpet.com
© 2014 Milliken & Company | Made in the USA

Cover image: *Grunge Background with Old Torn Posters*,
by Binski. © 2011 Shutterstock

2710024033
CP 0914