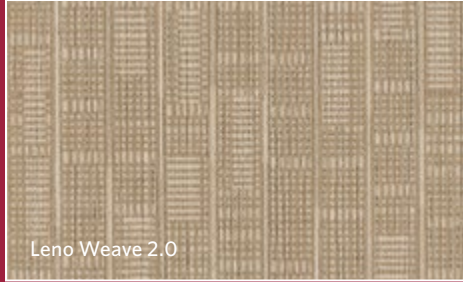


# SUITABLE 2.0

Leno Weave 2.0

Woven Threads 2.0



Leno Weave 2.0



Woven Threads 2.0



PRICE

Milliken™





**INSPIRED.**

Warp mingles with weft through the swift movement of the loom's shuttle. The interlacing of fine yarns begins to reveal pattern. Open and structured or more densely woven, the balance of texture and line quality achieves a richness and subtlety suitable for a Savile Row tailor.

Woven Threads 2.0 in Loam, monolithic tile installation



Woven Threads 2.0 in Loam, monolithic tile installation



Leno Weave 2.0 in Loam, monolithic tile installation



## INSPIRING.

It has been suggested that clothes make the man. And also the woman. But in our world of fast-paced technology, it is the appreciation for hand-work and the specialness of a made-to-measure garment from a beautifully crafted textile that brings to light the true artisanship of the tailor. With the Suitable 2.0 Collection, two explorations of fine suiting fabric are presented. Made to stand alone or work together as part of a single idea, these modern views on a loop construction offer clean, open structures combined with interesting texture in a modular tile. Suitable 2.0, textiles for the floor that would intrigue the finest Savile Row tailor.

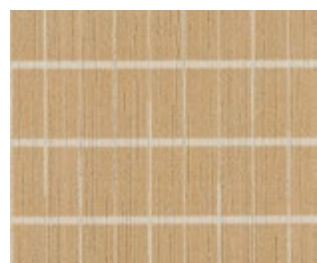
Woven Threads 2.0 (left) and Leno Weave 2.0 (right) in Argent, monolithic tile installation



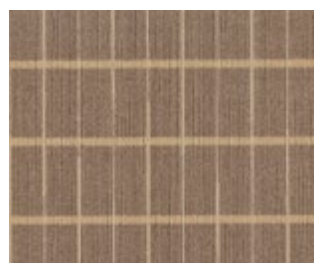
Woven Threads 2.0 in Raven, monolithic tile installation



Leno Weave 2.0 in Raven, monolithic tile installation



WOV12 FUSTIC



WOV124 FAON



WOV67 FLINT



WOV108 ARGENT



LEN12 FUSTIC



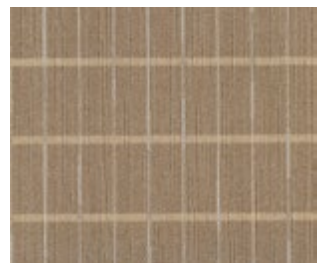
LEN124 FAON



LEN67 FLINT



LEN108 ARGENT



WOV42 ALESAN



WOV59 SANTOS



WOV133 EBON



WOV79 RAVEN



LEN42 ALESAN



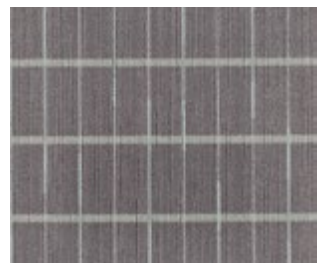
LEN59 SANTOS



LEN133 EBON



LEN79 RAVEN



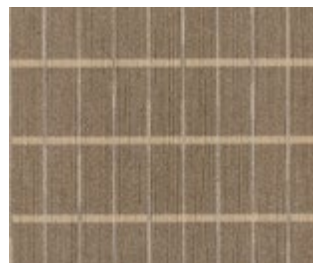
WOV5 INDO



WOV97 ASH



WOV87 LOAM



WOV93 CRAG



LEN5 INDO



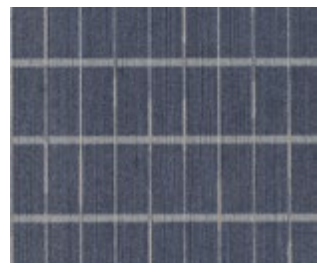
LEN97 ASH



LEN87 LOAM



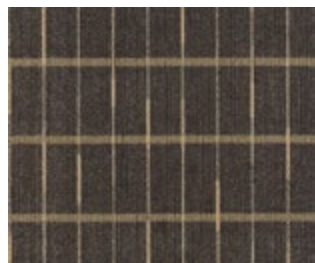
LEN93 CRAG



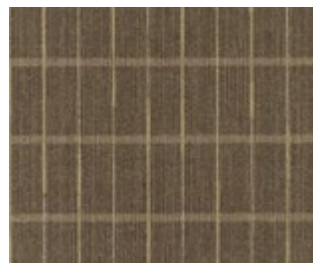
WOV73 CEYLON



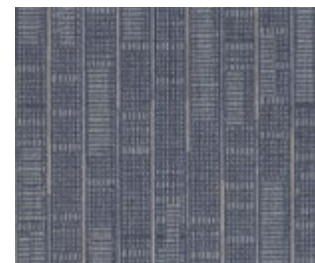
WOV46 HEMLOCK



WOV27 GRAPHITE



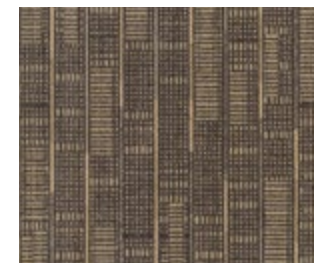
WOV88 DRAB



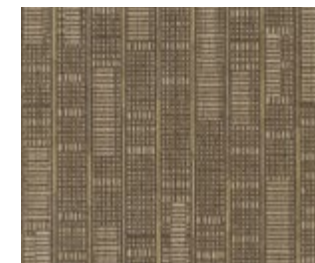
LEN73 CEYLON



LEN46 HEMLOCK



LEN27 GRAPHITE



LEN88 DRAB

# SUITABLE 2.0

## Leno Weave 2.0 / Woven Threads 2.0

Have you seen our other collections? Visit us online today.



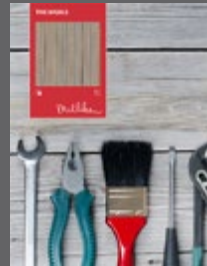
Art Media



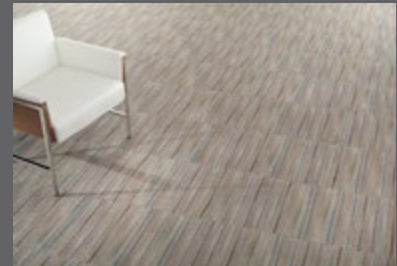
Nordic Stories



Inis Mór



The Basics



### Construction

Tufted, Textured Loop

### Tile Size

50 cm x 50 cm (19.7" x 19.7")

### Yarn Type

100% Milliken-Certified WearOn®  
Nylon Type 6,6

### Stain Repel / Stain Resist / Soil Release

StainSmart®

### Tufted Face Weight

15 oz/yd<sup>2</sup> (508.6 g/m<sup>2</sup>)

### Finished Pile Height

0.08" (2.03 mm)

### Average Density

6,541

### Standard Backing

PVC-Free Underscore™ ES Cushion  
Underscore™ is available with TractionBack®

### Texture Appearance Retention Rating (TARR)

Severe

### Recommended Installation Method



MONOLITHIC

### TractionBack®

Simplify your modular installation with Milliken's patented TractionBack®, an innovative backing system that is faster, more cost efficient, and environmentally superior to wet adhesives and peel-and-stick carpet tile.



This cushion-back carpet tile product is covered by one or more patents, published applications and/or patents pending. Specifications are subject to normal manufacturing tolerances and may be changed without prior notice.

### Growing greener for over 100 years.

This product has a UL® Environment 3<sup>rd</sup> party verified Environmental Product Declaration (EPD). A copy of the EPD is available online at [millikencarpet.com/epd](http://millikencarpet.com/epd) and [productguide.ulenvironment.com](http://productguide.ulenvironment.com).