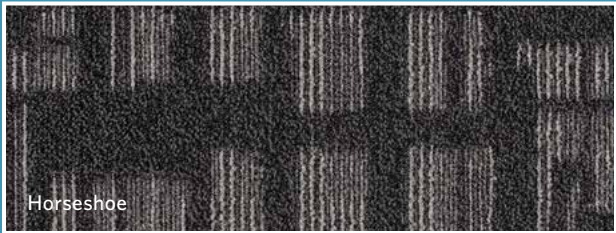




MONUMENTS & SHRINES

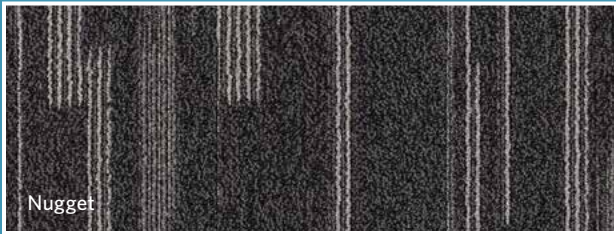
Horseshoe / Stardust / Nugget



Horseshoe



Stardust



Nugget



PRICE

Milliken™



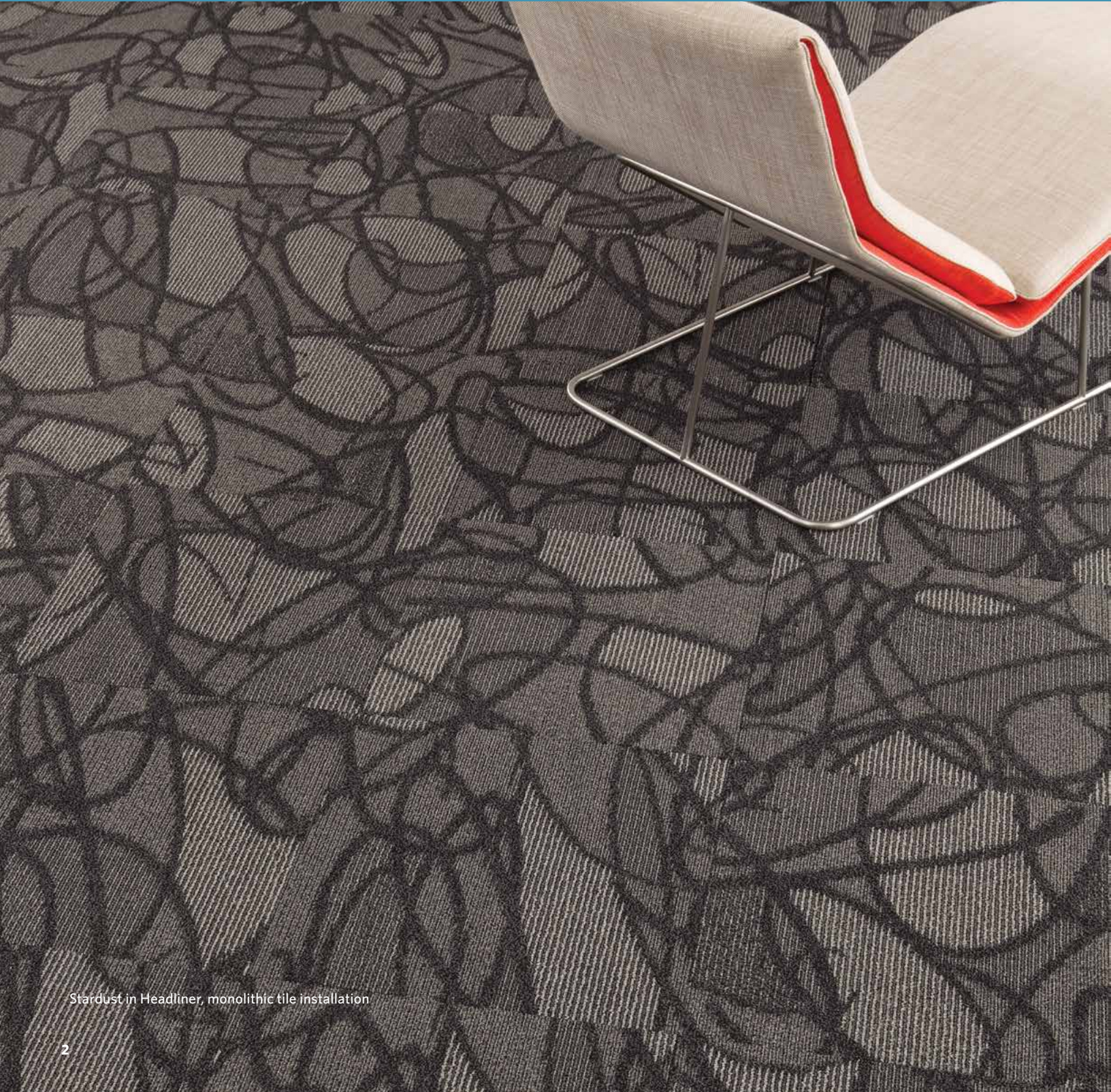
GLITTER GULCH



INSPIRED. INSPIRING.

On the outskirts of Vegas, the neon signs no longer hum, but you can still hear the faint murmurs of a once-mighty civilization they beckoned. The slush of martini shakers, the click of 5-inch heels. It was excessive. It was glamorous. It was day without night. And while time has moved on, the dramatic static display of size, scale and texture of these Monuments & Shrines remain to inspire us all.

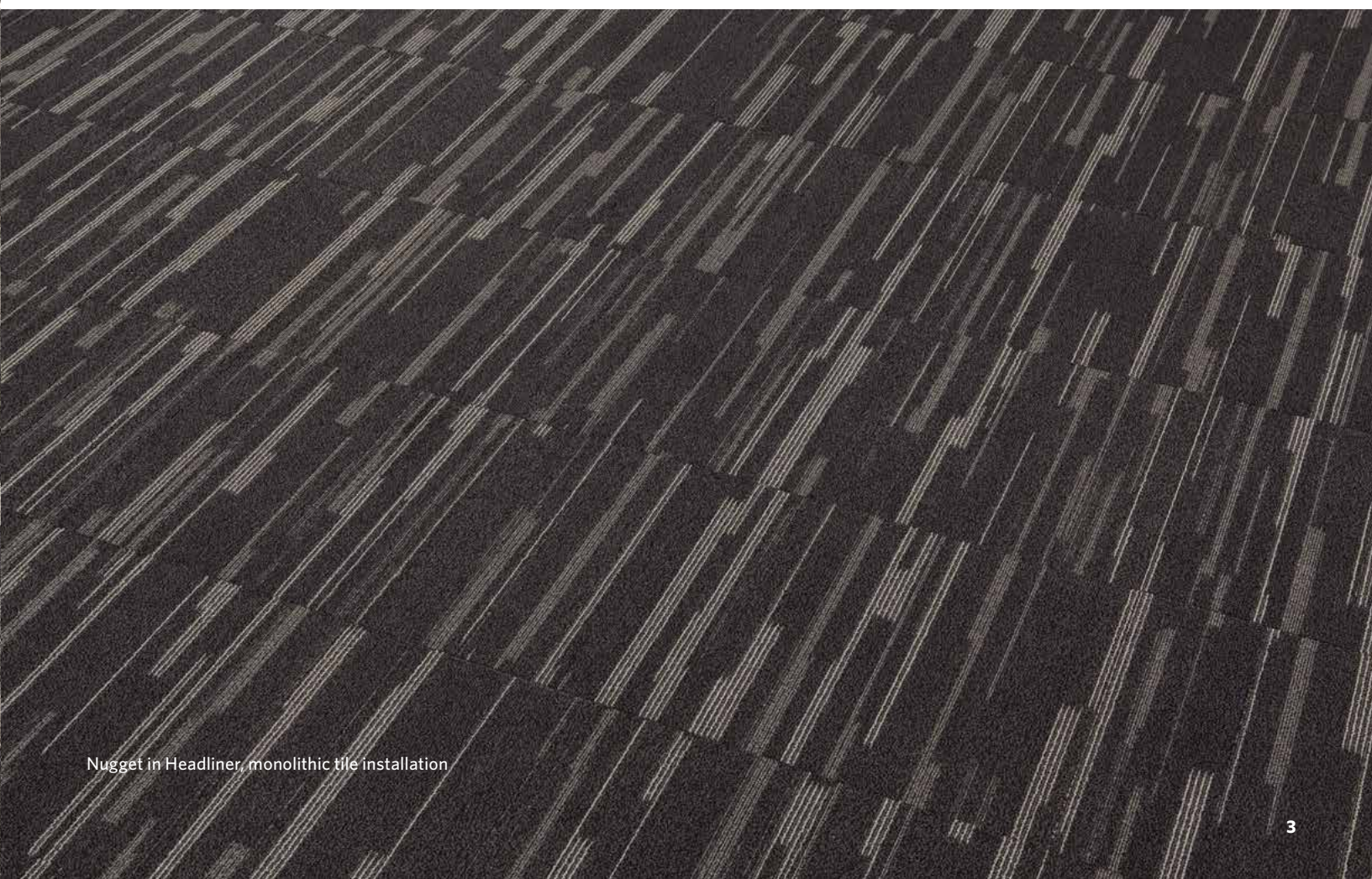
Get more at millikenfloors.com



Stardust in Headliner, monolithic tile installation



Horseshoe in Headliner, monolithic tile installation



Nugget in Headliner, monolithic tile installation



Horseshoe in Ring-a-Ding, monolithic tile installation



Stardust in Ring-a-Ding, monolithic tile installation



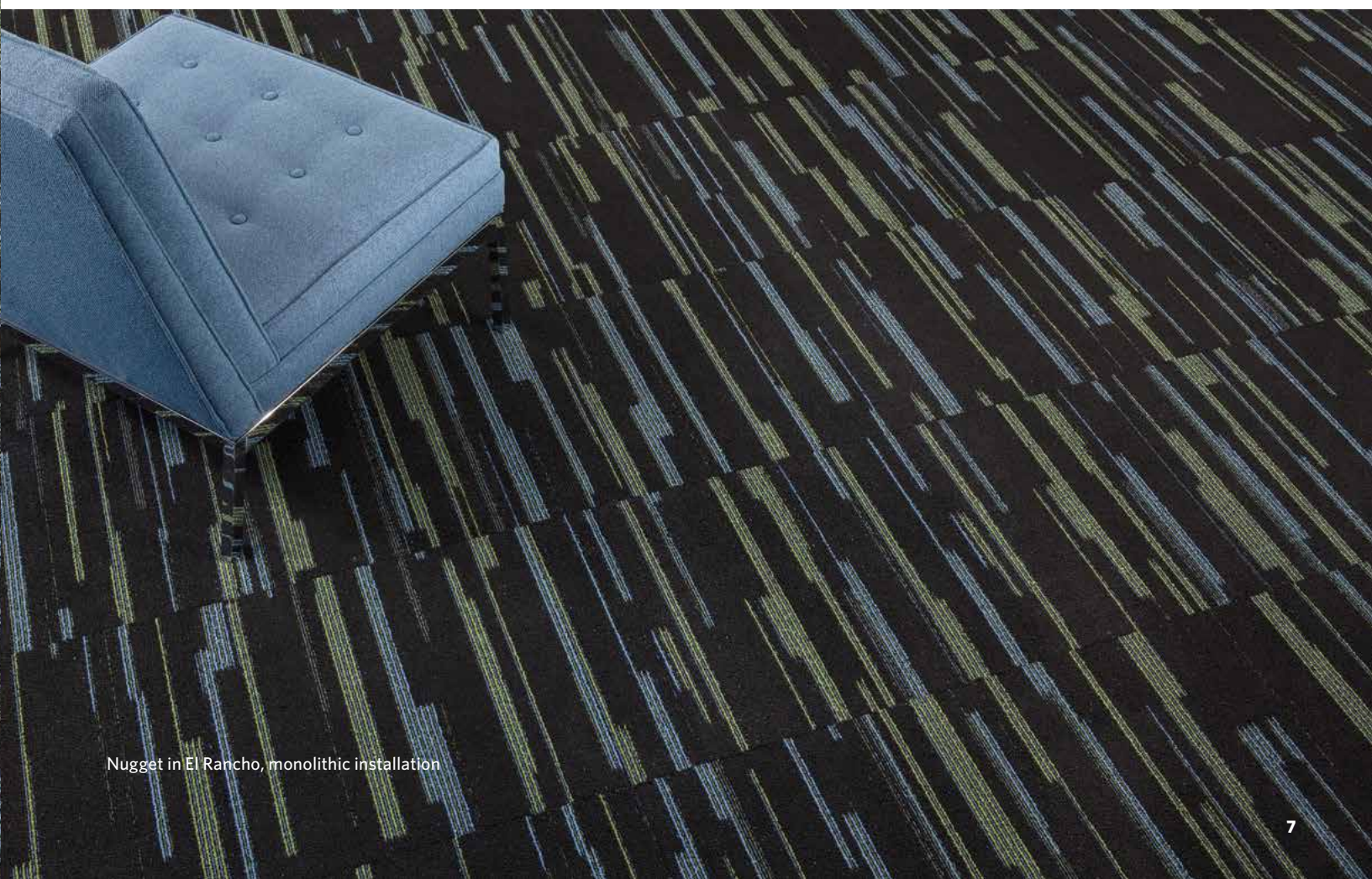
Nugget in Ring-a-Ding, monolithic tile installation



Stardust in El Rancho, monolithic tile installation



Horseshoe in El Rancho, monolithic installation



Nugget in El Rancho, monolithic installation



Horseshoe in Split, monolithic tile installation



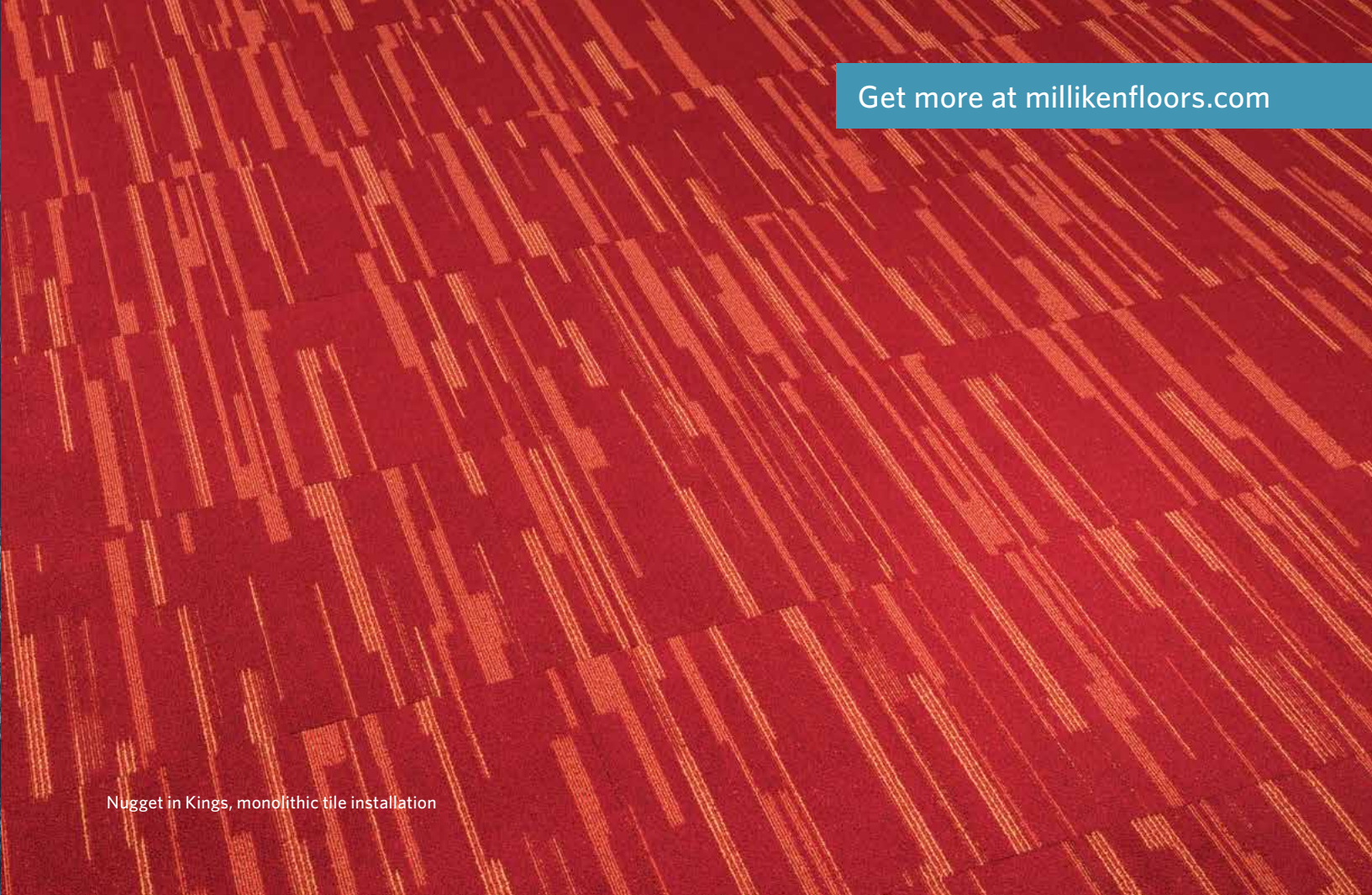
Stradust in Split, monolithic tile installation



Nugget in Split, monolithic tile installation



Nugget in Queens, monolithic tile installation



Nugget in Kings, monolithic tile installation

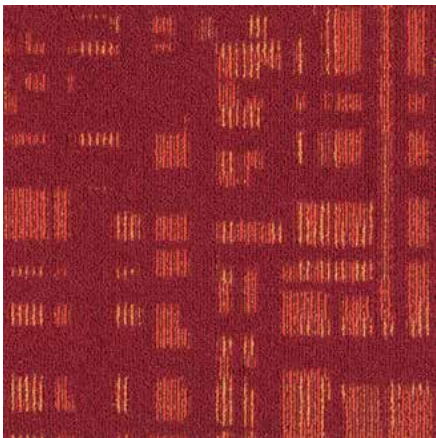


Horseshoe in Roulette, monolithic tile installation

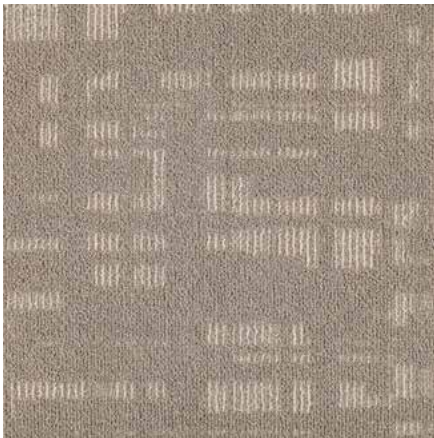
Colorline shown in **Horseshoe**



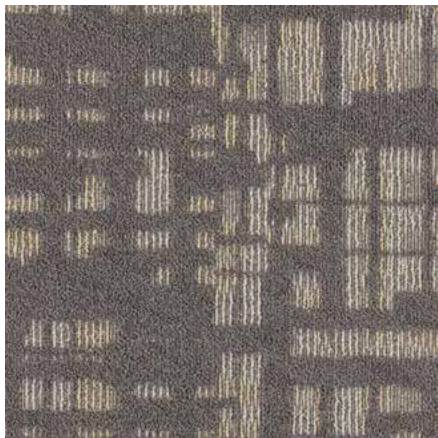
HS101 LOUNGE SINGER
(Stardust SD201, Nugget NG301)



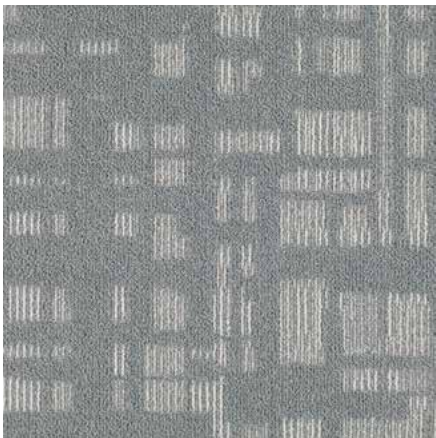
HS102 KINGS
(Stardust SD202, Nugget NG302)



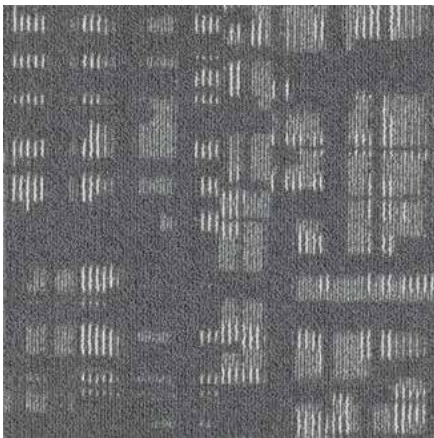
HS107 VENTRILOQUIST
(Stardust SD207, Nugget NG307)



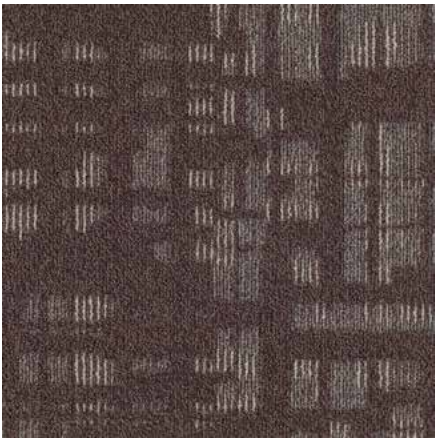
HS108 RING-A-DING
(Stardust SD208, Nugget NG308)



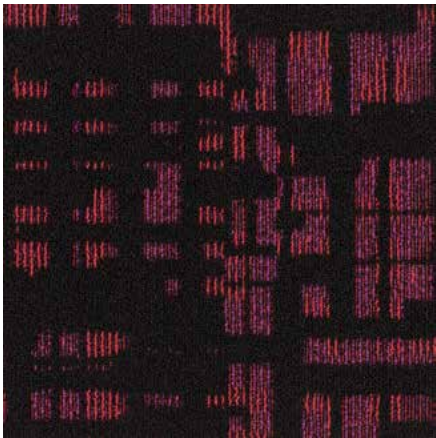
HS113 RHINESTONE
(Stardust SD213, Nugget NG313)



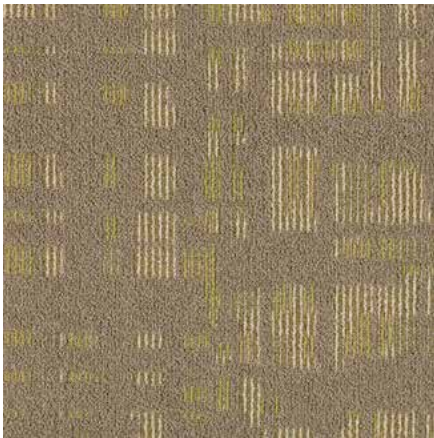
HS114 POCKET PAIR
(Stardust SD214, Nugget NG314)



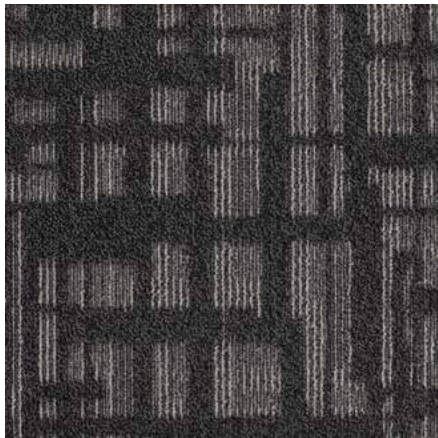
HS103 STATE CAFÉ
(Stardust SD203, Nugget NG303)



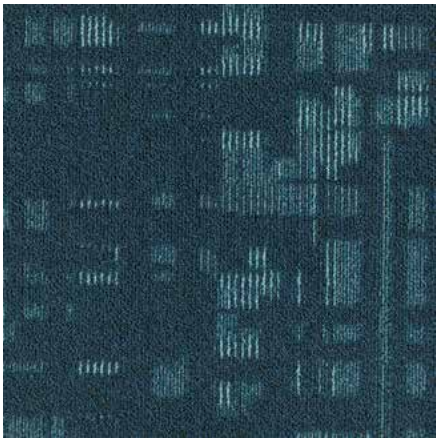
HS104 DOUBLE DOWN
(Stardust SD204, Nugget NG304)



HS109 SPLIT
(Stardust SD209, Nugget NG309)



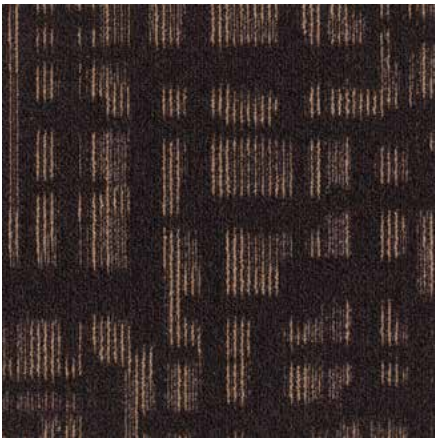
HS110 HEADLINER
(Stardust SD210, Nugget NG310)



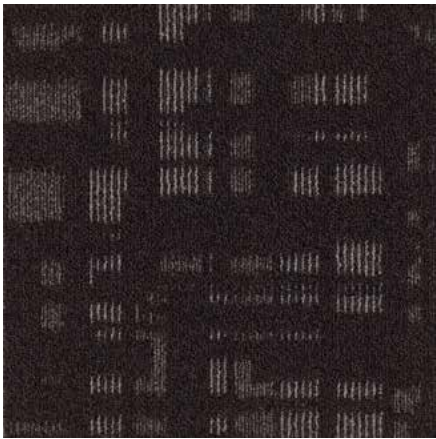
HS115 LADY LUCK
(Stardust SD215, Nugget NG315)



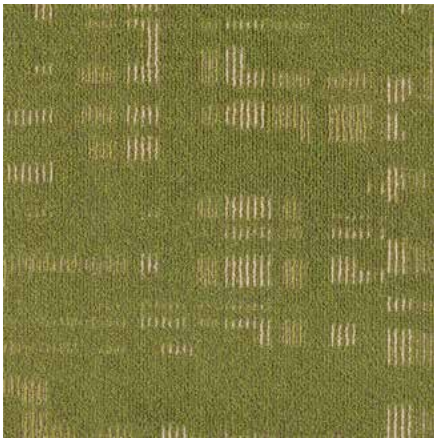
HS116 QUEENS
(Stardust SD216, Nugget NG316)



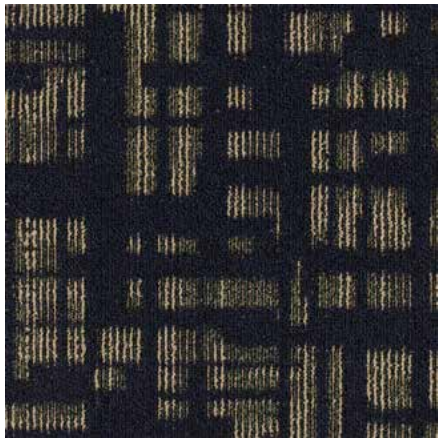
HS105 EL DORADO
(Stardust SD205, Nugget NG305)



HS106 PLAZA
(Stardust SD206, Nugget NG306)



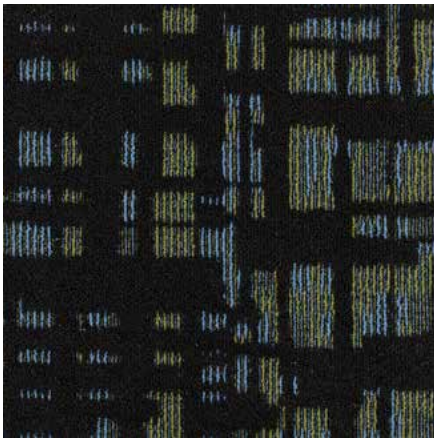
HS111 ROULETTE
(Stardust SD211, Nugget NG311)



HS112 JACKPOT
(Stardust SD212, Nugget NG312)



HS117 OVERLAND
(Stardust SD217, Nugget NG317)

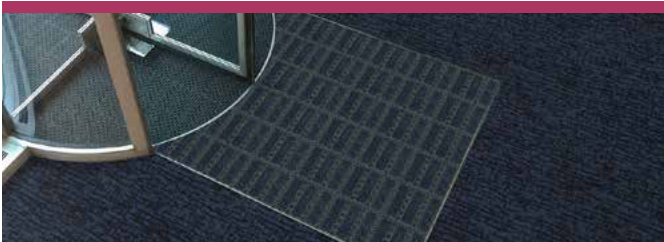


HS118 EL RANCHO
(Stardust SD218, Nugget NG318)

Complete Flooring Solutions



Milliken Floor Covering offers products and expertise in all areas of your commercial spaces, including high-performance entryway systems, broadloom & modular carpet, luxury vinyl tile, and milliCare®. Simplify your flooring needs with a trusted partner that will let you enjoy creating a great space without having to worry about everything else.



Entry Systems

The OBEX® brand of products offers highly effective, comprehensive modular entry solutions designed as a three-zone barrier system to prevent dirt and moisture from entering the building.

Available in coordinated colors and patterns, OBEX® entry products are engineered to increase the functionality of a building's entrance without forsaking elements of design or aesthetic. Simple and easy to work with, OBEX® offers entry systems that can be recessed or surface-mounted as well as exterior and interior applications.



Luxury Vinyl Tile

From natural looks of wood and stone to more modern textures and abstracts, Milliken's collection of Luxury Vinyl Tile flooring creates new options for a commercial or hospitality interior. Our simple-to-search Color Reference system provides easy coordination of the LVT options to modular and broadloom carpets. From carpet tile to broadloom to planks to LVT, Milliken provides durable and elegant options for your project.



Broadloom & Modular Carpet

Milliken's broadloom and carpet tile incorporate the latest innovations in tufting and dyeing technology, achieving unique looks and excellent performance. With our Color Reference system, coordinating multiple products across a single project is a snap; whether it's carpet, LVT, or entry systems. All carpet tile products have cushion backing for an extended lifespan, as well as ergonomic and environmental benefits. Broadloom carpet also has cushion-back options, and all are standard with StainSmart®, a proprietary treatment applied to Milliken carpets to repel and protect against stains and enhance soil release.



milliCare®

We care for the environment with products and a method that improve Indoor Air Quality and reduce water consumption and your carbon footprint. We care about you professionally by saving you time through customized service plans for your entire space provided for by our franchise network. You work healthier and live healthier, and the planet is a better place because of it. We can bring that same quality of care and service to you wherever you are. milliCare takes caring for your flooring and textiles off your to-do list, which means that you get to skip right to the part where you get to lean back, put your hands behind your head, and be a hero for keeping a beautifully cleaned space.

MONUMENTS & SHRINES

Horseshoe / Stardust / Nugget

Images in this brochure are approximate for color and pattern scale. Please use actual carpet samples to make your final selections.

Have you seen our other collections? Visit us online today.



Formwork



Whale Song



Construction

Tufted, Textured Loop

Tile Size

50 cm x 50 cm (19.7" x 19.7")

Yarn Type

ECONYL® Solution-Dyed
Nylon Type 6

Stain Repel & Resist / Soil Release

StainSmart®

Tufted Face Weight

Horseshoe: 16.6 oz/yd² (563 g/m²)
Nugget: 17.0 oz/yd² (576 g/m²)
Stardust: 15.1 oz/yd² (512 g/m²)

Finished Pile Height

0.156" (3.96 mm)

Finished Pile Thickness

Horseshoe: 0.063" (1.60 mm)
Nugget: 0.064" (1.63 mm)
Stardust: 0.068" (1.73 mm)

Average Density

Horseshoe: 7,473
Nugget: 5,722
Stardust: 7,246

Standard Backing

PVC-Free Underscore™ ES Cushion
Underscore™ is available with TractionBack®

Texture Appearance Retention Rating (TARR)

Severe

Recommended Installation Method



MONOLITHIC

TractionBack®

Simplify your modular installation with Milliken's patented TractionBack®, an innovative backing system that is faster, more cost efficient, and environmentally superior to wet adhesives and peel-and-stick carpet tile.



This cushion-back carpet tile product is covered by one or more patents, published applications and/or patents pending. Specifications are subject to normal manufacturing tolerances and may be changed without prior notice.

Growing greener for over 100 years.

This product has a UL® Environment 3rd party verified Environmental Product Declaration (EPD). A copy of the EPD is available online at millikencarpet.com/epd and productguide.ulenvironment.com.

Customer Concierge 800.824.2246 | millikenfloors.com
© 2011 Milliken & Company | Design © Milliken & Company | Made in the USA

Cover image: *Neon Signs*, Las Vegas, by John Foxx.
©2011, Getty Images

2710026609
CP 0516