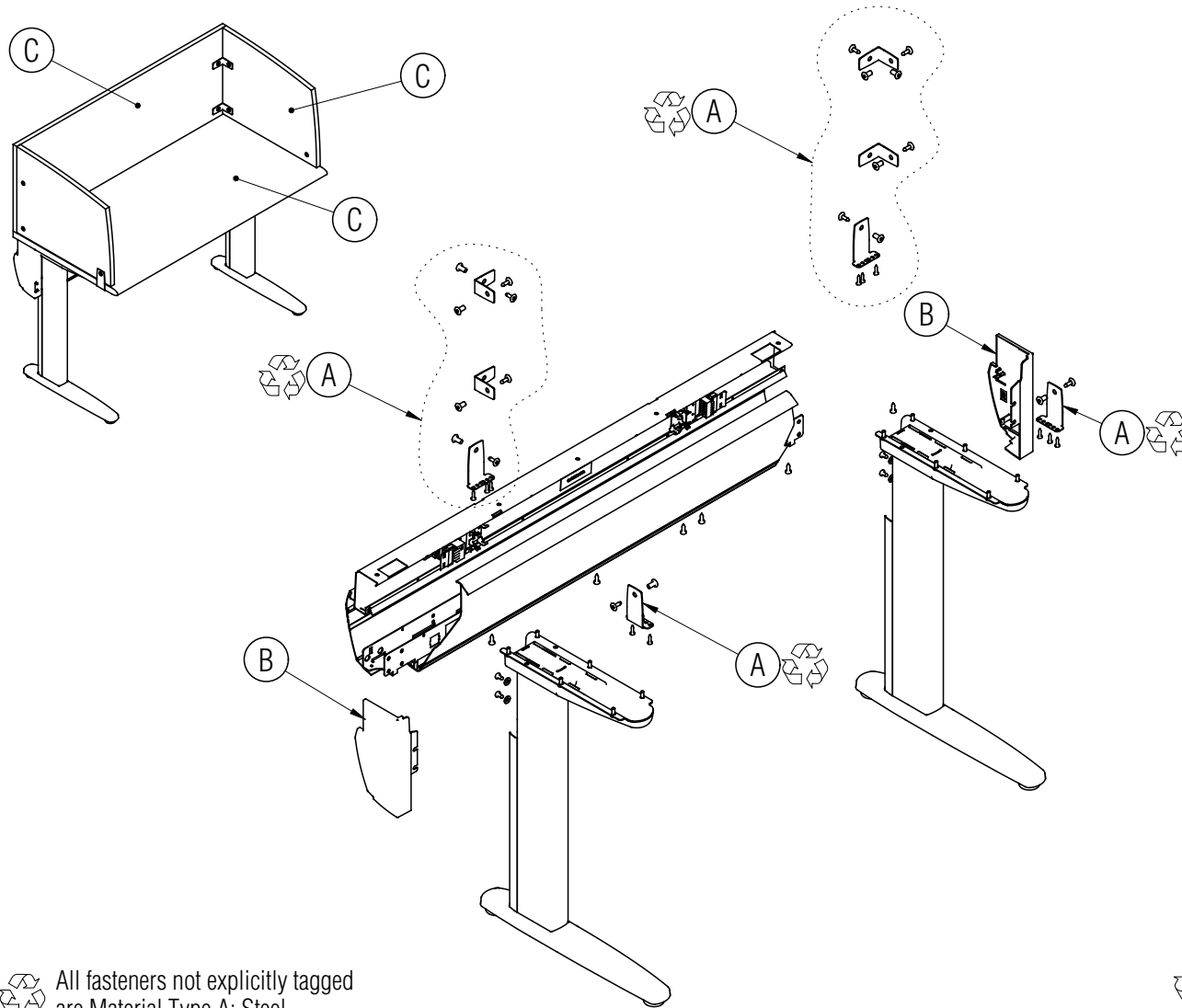


Disassembly Instructions



InTandem Table

Material Type: A . Steel B. Plastic C. Wood / Particle Board




Procedure:

1. Remove the screws and nuts holding the dividers to the table and to each other and remove the brackets and dividers.
2. Remove the screws holding each divider mounting bracket to the table top and remove the brackets.
3. Remove the screws holding the beam end caps to the leg and remove the caps.
4. Pull open the access door cover. Remove the screws holding the lower beam to the legs and remove the lower beam access door and beam cover. Remove the screws holding the upper beam to the underside of the table and remove the upper beam.
5. Remove the screws holding the table top to the legs and remove the top.

(continued next page)

General Notes:

1. Disassembly time: 20-30 minutes
2. This procedure assumes basic familiarity with hand tools and furniture terminology: no specialized training is required
3. All materials removed and disassembled shall be sorted and segregated with like materials and disposed of or recycled according to recycling availability or waste acceptance
4. For items to be recycled, refer to KI's End of Life Recycling Matrix and KI's End of Life Recovery Options Matrix, available at www.ki.com

 All fasteners not explicitly tagged are Material Type A: Steel

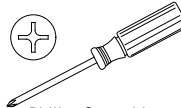
Required Tools



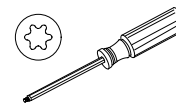
Gloves



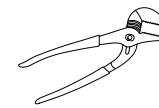
Safety Glasses



Phillips Screwdriver



Torx Screwdriver



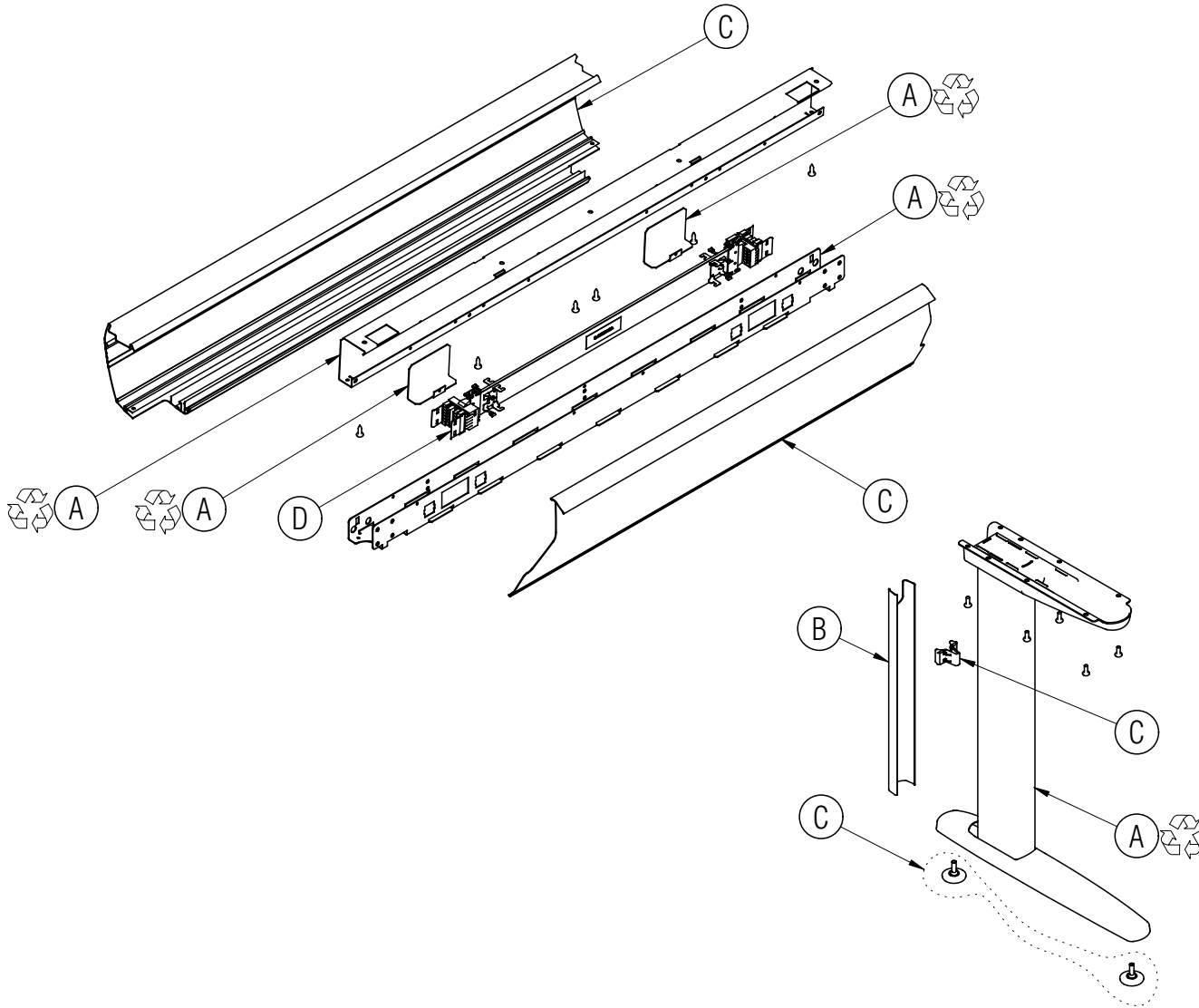
Channel Lock Pliers

Disassembly Instructions



InTandem Table

Material Type: A .Steel B. Aluminum C. Plastic D. Electrical Component



Procedure (continued):

6. Remove the screws holding the electrical harness and cover plates to the beam and remove the harness and plates.
7. Pull out the trim channel on the back of each leg and remove the channel retaining clip.
8. Remove the glides from the bottom of each leg.
9. Remove the glides and pry out the glide housings inserted into each leg tube.

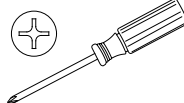
Required Tools



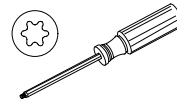
Gloves



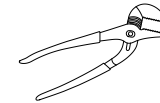
Safety Glasses



Philips Screwdriver



Torx Screwdriver



Channel Lock Pliers