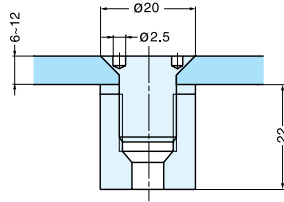




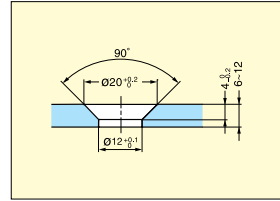
GLASS STANDOFF



7060EO



- Flush mount type glass standoff.
- Recommended Screw Size: M5 bolt
- Recommended for use with tempered glass.



Cut Out Dimension



Z059
* Special wrench Z059 required for installation. (Sold Separately)

Item No.	Glass Thickness (mm)	Weight (g)	Box (pcs)	Carton (pcs)
7060EO	6~12	23	10	100

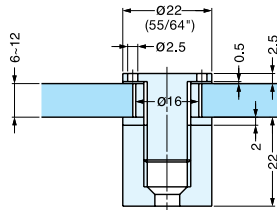
Material	Finish
Aluminum	Anodized



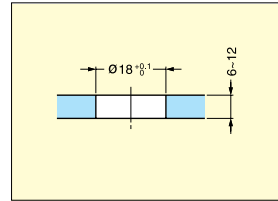
GLASS STANDOFF



7061VA



- Glass standoff with flat face plate.
- Recommended Screw Size: M5 bolt
- Recommended for use with tempered glass.



Cut Out Dimension



Z059
* Special wrench Z059 required for installation. (Sold Separately)

Item No.	Glass Thickness (mm)	Weight (g)	Box (pcs)	Carton (pcs)
7061VA	6~12	69	10	100

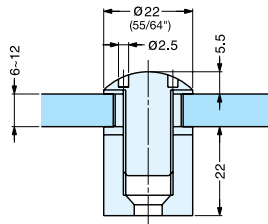
Material	Finish
304 Stainless Steel	Satin



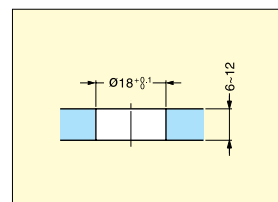
GLASS STANDOFF



7062VA



- Glass standoff with round face plate.
- Recommended Screw Size: M5 bolt
- Recommended for use with tempered glass.



Cut Out Dimension



Z059
* Special wrench Z059 required for installation. (Sold Separately)

Item No.	Glass Thickness (mm)	Weight (g)	Box (pcs)	Carton (pcs)
7062VA	6~12	71	10	100

Material	Finish
304 Stainless Steel	Satin