

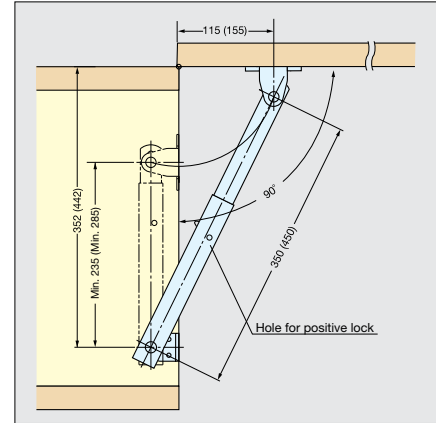
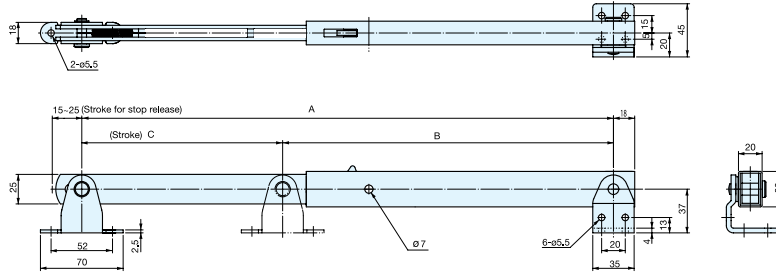
HEAVY DUTY LID STAY


LB-S


LB-S350



LB-S450



Measurements above in () are for LB-S450.

*Lid stay must be installed parallel to the sidewall.

Material	Finish
304 Stainless Steel	Satin

Item No.	(A)	B	C	Load Capacity (kg)	Weight (g)	Box (pcs)	Carton (pcs)
LB-S350	350 (13-25/32")	230 (9-1/16")	120 (4-23/32")	133 (293 lbs)	745	5	20
LB-S450	450 (17-25/32")	280 (11-1/32")	170 (6-11/16")	97 (214 lbs)	865		

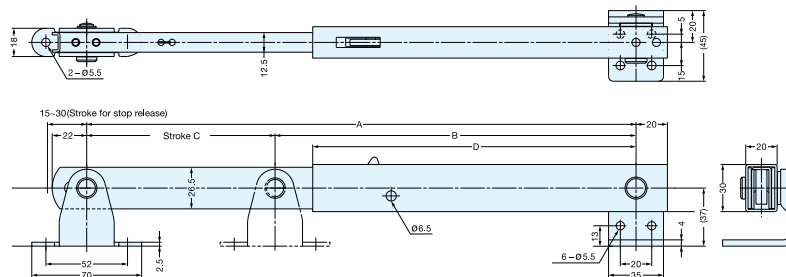
HEAVY DUTY MULTI-ANGLE LID STAY


LBTS

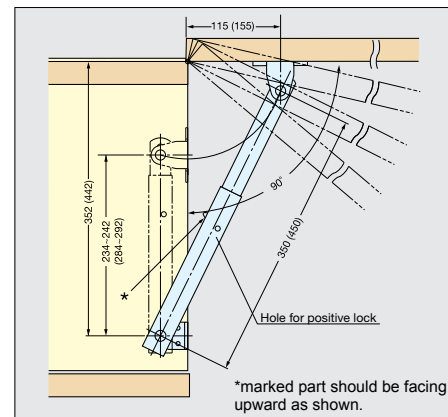

LBTS-350



LBTS-450



Above drawing shows LBTS left-hand mounting.



Measurements above in () are for LBTS-450R.

*Lid stay must be installed parallel to the sidewall.

Material	Finish
304 Stainless Steel	Satin

Item No.		(A)	B	C	D	Stop Positions	Load Capacity (kg)	Weight (g)	Box (pcs)	Carton (pcs)
Left	Right	350 (13-25/32")	230 (9-1/16")	120 (4-23/32")	206 (8-7/64")	4	70 (154 lbs)	715	5	20
LBTS-350L	LBTS-350R							820		
LBTS-450L	LBTS-450R	450 (17-25/32")	280 (11-1/32")	170 (6-11/16")	256 (10-5/64")	6				