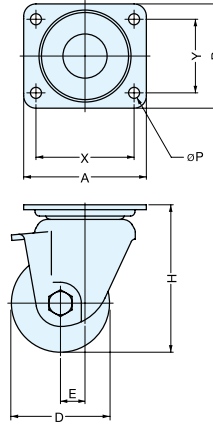


# LOW PROFILE HEAVY DUTY CASTER



**UHG**



- Low profile and heavy duty up to 816kg (1795 lbs), ideal for manufacturing equipment.
- Sealed ball bearing swivel assembly provides smooth and long-term service.
- Hexavalent chromium free. Using trivalent chromium for RoHS compliance.
- Choose wheel type from Phenolic, Reinforced Nylon, MC Nylon or Electro-conductive MC Nylon.
- All wheels equipped with heavy duty ball bearing.

\*Please specify wheel type when ordering.

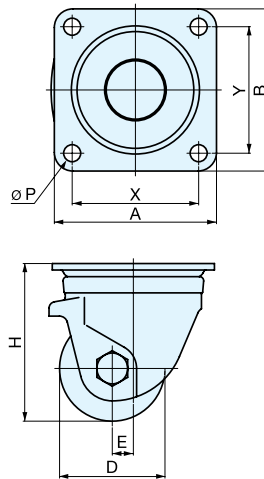
Part Name	Material	Finish
Body / Mounting Plate	Steel	Clear Zinc Chromate (Trivalent Chromium)
Wheel	Phenolic Resin (PB)	Black
	Reinforced Nylon (GFB)	
	MC Nylon (MC)	
	Electro-conductive MC Nylon (MCE)	

Item No.	Bearing in wheels	D	Wheel Width	H	A	B	X	Y	P	E	Swivel Radius	Load Capacity (kg)	Weight (g)	Box (pcs)	Carton (pcs)
UHG-50 (PB,MC,MCE)	With Bearing	50	38	79	84	84	64	64	8.5	11	49	408 ( 898 lbs)	820	20	200
UHG-65 (PB,GFB,MC,MCE)		65	48	97	100	100	78	78	10.5	14	57	510 (1122 lbs)	1540	12	120
UHG-75 (PB,GFB,MC,MCE)		75	48	107	100	100	78	78	10.5	14	57	612 (1347 lbs)	1625	12	120
UHG-80MC		80	48	120	100	85	80	60	9.0	20	62	816 (1795 lbs)	1680	12	120
UHG-100MC		100	48	140	150	110	121	59	13.0	20	72	816 (1795 lbs)	2160	8	80

# LOW PROFILE HEAVY DUTY CASTER



**HG**



- Low profile and heavy duty up to 255 kg (561 lbs), ideal for manufacturing equipment.
- Hardened frame for maximum rigidity and strength.
- Sealed ball bearing swivel assembly provides smooth and long-term service.
- Hexavalent chromium free. Using trivalent chromium for RoHS compliance.
- Two wheel types:
  - Phenolic
  - Reinforced Nylon with ball bearing spindle
- Wheel brake available on special order.

Part Name	Material	Finish
Body	Steel	Clear Zinc Chromate (Trivalent Chromium)
Mounting Plate		
Wheel	Reinforced Nylon(GNB)	Black
	Phenolic Resin(PB)	

Item No.	Bearing in wheels	D	Wheel Width	H	A	B	X	Y	P	E	Swivel Radius	Load Capacity (kg)	Weight (g)	Box (pcs)	Carton (pcs)
HG-50GNB	Without Bearing	50	28	68	50	50	64	64	6.5	25	51	163 (359 lbs)	320	36	600
HG-65PB	With Bearing	65	38	92	90	90	71	71	10.5	22	57	306 (675 lbs)	880	20	200
HG-75PB		75	38	106	90	90	71	71	10.5	22	61	326 (719 lbs)	970	20	120