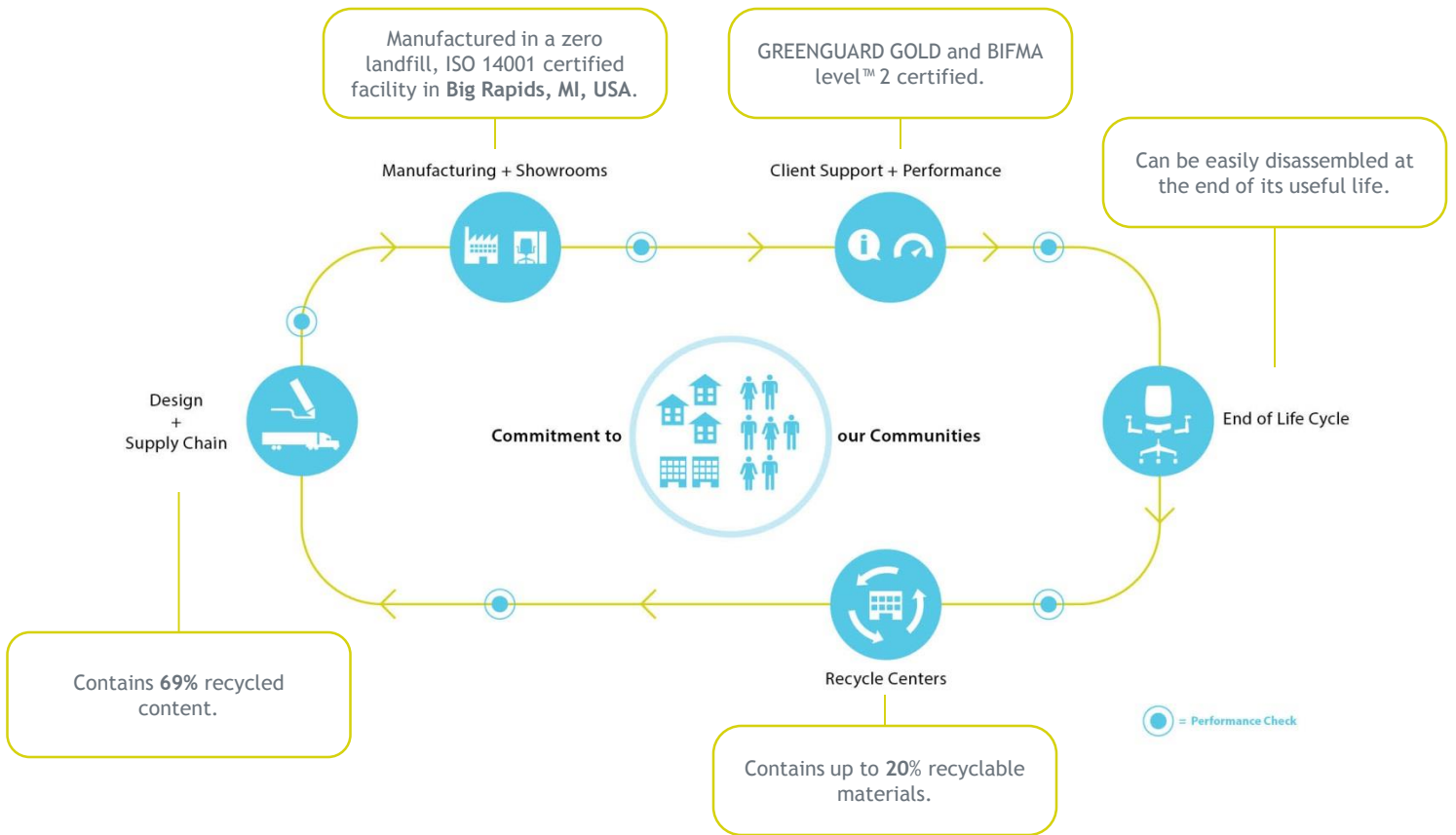


# Masters Series®

PRODUCT CATEGORY: WOOD CASEGOODS

## PRODUCT ENVIRONMENTAL DATA SHEET

SECTOR: NORTH AMERICA



## HAWORTH®

The recycled content calculation is based on a typical configuration of Mater Series, including a single pedestal desk, modular credenza, worksurfaces, end panel, modesty panel, lateral file, hutch unit, and mobile pedestal.

### RECYCLED CONTENT

	Material Weight	Post-Consumer Recycled Content	Pre-Consumer Recycled Content
Particleboard	586.60 lbs (73%)	149.58 lbs	349.03 lbs
Steel	161.20 lbs (20%)	31.90 lbs	23.20 lbs
Veneer	19.00 lbs (2%)	0.00 lbs	0.00 lbs
Other materials	36.20 lbs (5%)	0.00 lbs	0.00 lbs
<b>Total</b>	<b>803.00 lbs (100%)</b>	<b>181.48 lbs (23%)</b>	<b>372.23 lbs (46%)</b>

CERTIFICATIONS



level 2 certified  
 Certification # C0054330-105



GREENGUARD GOLD certified  
 Certification # 25212-420

MATERIAL CHEMISTRY

We believe that our products should be safe for humans and the environment. That's why we are working diligently to identify and eliminate chemicals of concern in the materials we source. While we have identified more than 870 chemicals that we plan to eliminate from our products throughout the next 10 years, we have identified 56 chemicals that we plan to eliminate by 2015.

These include, among others, PVC, benzidine dyes, ozone depletors, hexavalent chromium, certain hazardous phthalates, and PBDE flame retardants. We are committed to achieving this goal and being transparent with our customers about our progress.

LIFE CYCLE ASSESMENT (LCA) SUMMARY\*

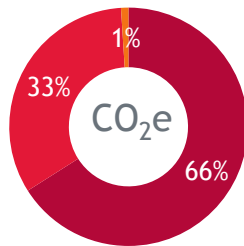
Global Warming Potential	1620 kg CO <sub>2</sub> eq.
Acidification Potential	8.67 kg SO <sub>2</sub> eq.
Eutrophication Potential	1.01 kg N eq.
Smog	175 kg O <sub>3</sub> eq.

RECYCLABILITY & END OF LIFE MANAGEMENT

	Material Weight	Recyclable Content
Steel	161.20 lbs (20%)	161.20 lbs
Particleboard	605.60 lbs (75%)	0.00 lbs
Other materials	36.20 lbs (5%)	0.40 lbs
<b>Total</b>	<b>803.00 lbs (100%)</b>	<b>161.60 lbs (20%)</b>

Impact by life cycle stage

- Materials & Manufacturing
- Transportation
- End of Life



\*Impact assessment method: TRACI 2.1 v1.00 / US-Canadian 2008

Once a Haworth product reaches the end of its life, our product's end-of-life program ensures that customers have options (e.g., recycling, resale, refurbishment, and donation) to prevent it from being discarded into a landfill. To encourage recycling, we have published disassembly instructions for many of our products on the individual product pages. Our products have been intentionally built using highly-recyclable metals and plastics including steel, aluminum, polypropylene, and nylon.

We encourage our customers to contact us regarding end-of-life options in their region so that we can help them make the world a better place for future generations.

The polyethylene film, corrugated cardboard, and wood packaging materials used on Masters series are all readily recyclable or reusable.

## LEADERSHIP IN ENERGY AND ENVIRONMENTAL DESIGN (LEED®) v2009

**Interior Design and Construction (ID+C)**

MRc4: Recycled Content	Masters Series contains 23% post-consumer and 46% pre-consumer recycled content.	1-2 points
MRc5: Regional Materials	Masters Series is manufactured in Big Rapids, MI, USA.	1-2 points
MRc7: Certified Wood	FSC certified wood is available as standard product with some finish restrictions	1 point
IEQc4.5: Low-emitting materials - Systems Furniture and Seating	Masters Series is GREENGUARD GOLD certified as low-emitting.	1 point

**Building Design and Construction (BD+C)**

MRc4: Recycled Content	Masters Series contains 23% post-consumer and 46% pre-consumer recycled content.	1-2 points
MRc5: Regional Materials	Masters Series is manufactured in Big Rapids, MI, USA.	1-2 points
MRc7: Certified Wood	FSC certified wood available as standard product with some finish restrictions	1 point

**Existing Buildings: Operations and Maintenance (EB:OM)**

MRc2: Sustainable Purchasing - Durable Goods	Masters Series contains greater than 23% post-consumer and 46% pre-consumer recycled content	1-2 points
--	--	------------

**Core and Shell Development (CS)**

MRc4: Recycled Content	Masters Series contains 23% post-consumer and 46% pre-consumer recycled content.	1-2 points
MRc5: Regional Materials	Masters Series is manufactured in Big Rapids, MI, USA.	1-2 points

To learn more about Haworth sustainability initiatives [click here](#).

Product Support

Visit [www.haworth.com](http://www.haworth.com) to find the Haworth dealer closest to you.

Environmental support

Contact [sustainability@haworth.com](mailto:sustainability@haworth.com)

## LEADERSHIP IN ENERGY AND ENVIRONMENTAL DESIGN (LEED®) v4

## LEED ID+C: Commercial Interiors | v4

MR109: Interiors life-cycle impact reduction	Depending on products chosen, Haworth products can contribute to some of the design for flexibility strategies including; take back system, recyclable materials, flexible power distribution, moveable walls, or access flooring.	1-4 points
MR114: Building product disclosure & optimization- sourcing of raw materials	Haworth is a member of the UN Global Compact and published an annual Communication of Progress which contributes to Option 1: raw material source and extraction reporting. Haworth products also contain recycled content or FSC certified wood which contribute to Option 2: leadership extraction practices.	1-2 points
IEQ112: Low-emitting Materials	Haworth products is Greenguard certified which is compliant with ANSI/BIFMA Standard Method M7.1-2011.	1-3 points

## LEED BD+C: New Construction | v4

MR114: Building product disclosure & optimization- sourcing of raw materials	Haworth is a member of the UN Global Compact and published an annual Communication of Progress which contributes to Option 1: raw material source and extraction reporting. Haworth products also contain recycled content or FSC certified wood which contribute to Option 2: leadership extraction practices.	1-2 points
IEQ112: Low-emitting Materials	Haworth products is Greenguard certified which is compliant with ANSI/BIFMA Standard Method M7.1-2011.	1-3 points

To learn more about Haworth sustainability initiatives [click here](#).

Product Support

Visit [www.haworth.com](http://www.haworth.com) to find the Haworth dealer closest to you.

Environmental support

Contact [sustainability@haworth.com](mailto:sustainability@haworth.com)

**HAWORTH®**