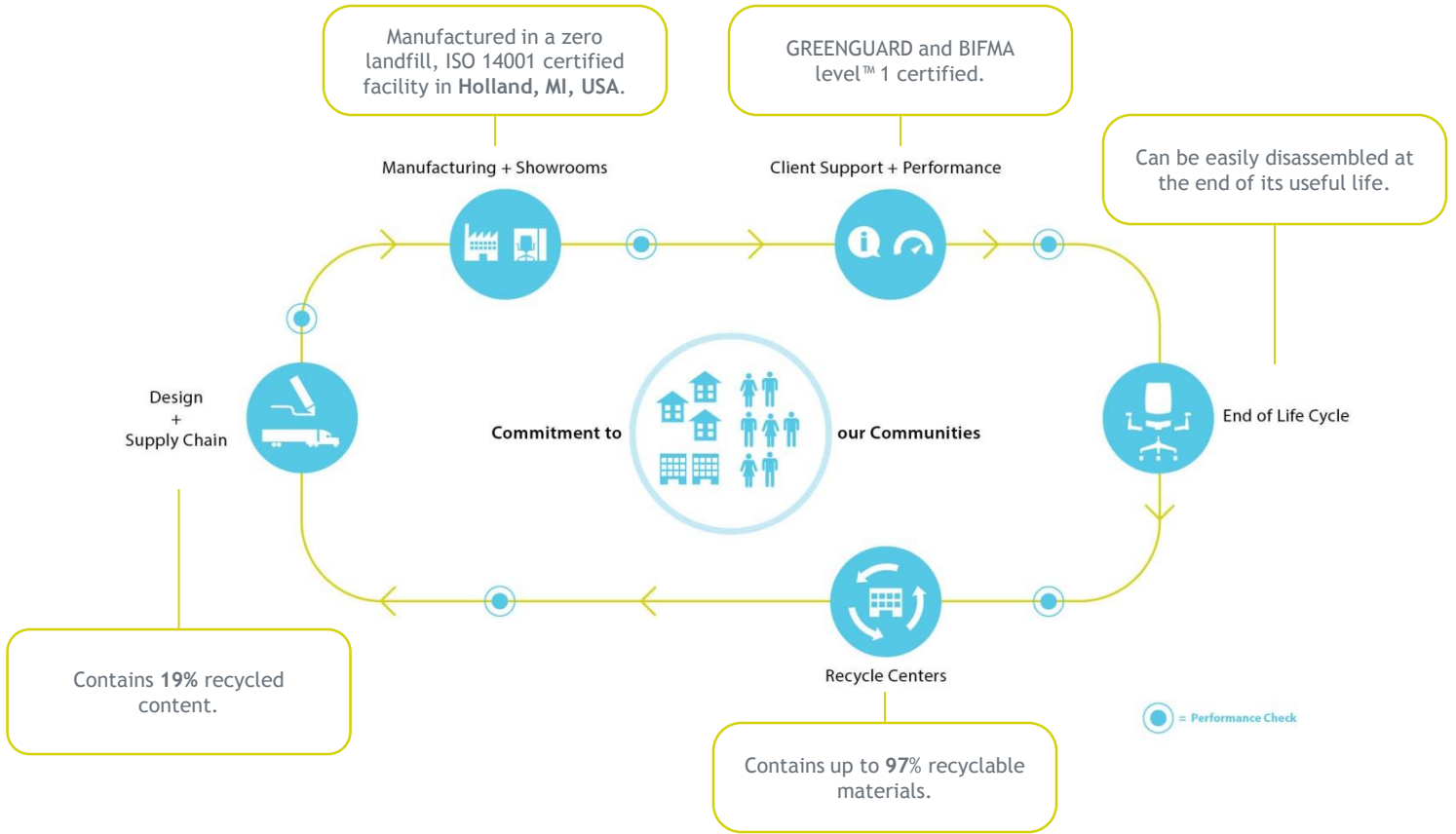


# Enclose®

PRODUCT CATEGORY: WALLS

## PRODUCT ENVIRONMENTAL DATA SHEET

SECTOR: NORTH AMERICA



## HAWORTH®

With options such as glass, metal, laminate, wall coverings, wood and more, there are many ways to define design with Enclose. The recycled content calculation is based on a typical 10'x12' private office.

### RECYCLED CONTENT

|                 | Material Weight           | Post-Consumer Recycled Content | Pre-Consumer Recycled Content |
|-----------------|---------------------------|--------------------------------|-------------------------------|
| Aluminum        | 394.50 lbs (18%)          | 39.50 lbs                      | 236.70 lbs                    |
| Steel           | 244.40 lbs (11%)          | 48.40 lbs                      | 35.20 lbs                     |
| Glass           | 349.70 lbs (16%)          | 0.00 lbs                       | 0.00 lbs                      |
| Drywall         | 1156.00 lbs (53%)         | 23.10 lbs                      | 34.70 lbs                     |
| Other materials | 49.40 lbs (02%)           | 0.00 lbs                       | 0.00 lbs                      |
| <b>Total</b>    | <b>2,193.9 lbs (100%)</b> | <b>111.00 lbs (5%)</b>         | <b>306.60 lbs (14%)</b>       |

PRODUCT SPECIFICATIONS



level™ 1 certified  
 Certification # C0054326-103



GREENGUARD certified  
 Enclose fabric certification # 25224-410  
 Enclose glass certification # 25222-410  
 Enclose laminate certification # 25225-410  
 Enclose steel certification # 25223-410



Forest Stewardship Council® (FSC®)  
 certified wood is available through  
 special order.  
 Chain of Custody: SCS-COC-001218

MATERIAL CHEMISTRY

We believe that our products should be safe for humans and the environment. That's why we are working diligently to identify and eliminate chemicals of concern in the materials we source. While we have identified more than 870 chemicals that we plan to eliminate from our products throughout the next 10 years, we have identified 56 chemicals that we plan to eliminate by 2015.

These include, among others, PVC, benzidine dyes, ozone depletors, hexavalent chromium, certain hazardous phthalates, and PBDE flame retardants. We are committed to achieving this goal and being transparent with our customers about our progress.

LIFE CYCLE ASSESMENT (LCA) SUMMARY

The Enclose lifecycle carbon footprint is 3260 kg CO<sub>2</sub>e.

The impact assessment method used was TRACI2.1 V1.00/US-Canadian 2008.

Life Cycle Assessments (LCAs) are one tool which allows us to enhance the triple bottom line of Haworth products by identifying high environmental impact stages within our products' lifecycles. Haworth is committed to better understanding and reducing the impacts of our products and operations on the natural world.

RECYCLABILITY & END OF LIFE MANAGEMENT

|                 | Material Weight           | Recyclable Content       |
|-----------------|---------------------------|--------------------------|
| Aluminum        | 394.50 lbs (18%)          | 394.50 lbs               |
| Steel           | 244.40 lbs (11%)          | 244.40 lbs               |
| Drywall         | 1156.00 lbs (53%)         | 1156.00 lbs              |
| Glass           | 349.70 lbs (16%)          | 349.70 lbs               |
| Other materials | 49.40 lbs (02%)           | 0.0 lbs                  |
| <b>Total</b>    | <b>2,193.9 lbs (100%)</b> | <b>2,144.6 lbs (97%)</b> |

Once a Haworth product reaches the end of its life, our product's end-of-life program ensures that customers have options (e.g., recycling, resale, refurbishment, and donation) to prevent it from being discarded into a landfill. To encourage recycling, we have published disassembly instructions for many of our products on the individual product pages. Our products have been intentionally built using highly-recyclable metals and plastics including steel, aluminum, polypropylene, and nylon.

We encourage our customers to contact us regarding end-of-life options in their region so that we can help them make the world a better place for future generations.

## LEADERSHIP IN ENERGY AND ENVIRONMENTAL DESIGN (LEED®) v2009

**Interior Design and Construction (ID+C)**

|   |  |            |
|---|--|------------|
| MRC4: Recycled Content  | Enclose contains 5% post-consumer and 14% pre-consumer recycled content. | 1-2 points |
| MRC5: Regional Materials  | Enclose is manufactured in Holland, MI, USA.                             | 1-2 points |
| MRC7: Certified Wood  | FSC certified wood available through special order.                      | 1 point    |
| IEQc4.5: Low-emitting materials - Systems Furniture and Seating | Enclose is GREENGUARD certified as low-emitting.                         | 1 point    |

**Building Design and Construction (BD+C)**

|                          |  |            |
|--------------------------|--|------------|
| MRC4: Recycled Content   | Enclose contains 5% post-consumer and 14% pre-consumer recycled content. | 1-2 points |
| MRC5: Regional Materials | Enclose is manufactured in Holland, MI, USA.                             | 1-2 points |
| MRC7: Certified Wood     | FSC certified wood available through special order.                      | 1 point    |

**Core and Shell Development (CS)**

|                          |  |            |
|--------------------------|--|------------|
| MRC4: Recycled Content   | Enclose contains 5% post-consumer and 14% pre-consumer recycled content. | 1-2 points |
| MRC5: Regional Materials | Enclose is manufactured in Holland, MI, USA.                             | 1-2 points |

To learn more about Haworth sustainability initiatives [click here](#).

Product Support

Visit [www.haworth.com](http://www.haworth.com) to find the Haworth dealer closest to you.

Environmental support

Contact [sustainability@haworth.com](mailto:sustainability@haworth.com)

## LEADERSHIP IN ENERGY AND ENVIRONMENTAL DESIGN (LEED®) v4

## LEED ID+C: Commercial Interiors | v4

|  |   |            |
|--|---|------------|
| MR109: Interiors life-cycle impact reduction                                 | Depending on products chosen, Haworth products can contribute to some of the design for flexibility strategies including; take back system, recyclable materials, flexible power distribution, moveable walls, or access flooring.  | 1-4 points |
| MR114: Building product disclosure & optimization- sourcing of raw materials | Haworth is a member of the UN Global Compact and published an annual Communication of Progress which contributes to Option 1: raw material source and extraction reporting. Haworth products also contain recycled content or FSC certified wood which contribute to Option 2: leadership extraction practices. | 1-2 points |
| IEQ112: Low-emitting Materials   | Haworth products are Greenguard certified which is compliant with ANSI/BIFMA Standard Method M7.1-2011.   | 1-3 points |

## LEED BD+C: New Construction | v4

|  |   |            |
|--|---|------------|
| MR114: Building product disclosure & optimization- sourcing of raw materials | Haworth is a member of the UN Global Compact and published an annual Communication of Progress which contributes to Option 1: raw material source and extraction reporting. Haworth products also contain recycled content or FSC certified wood which contribute to Option 2: leadership extraction practices. | 1-2 points |
| IEQ112: Low-emitting Materials   | Haworth products are Greenguard certified which is compliant with ANSI/BIFMA Standard Method M7.1-2011.   | 1-3 points |

To learn more about Haworth sustainability initiatives [click here](#).

Product Support

Visit [www.haworth.com](http://www.haworth.com) to find the Haworth dealer closest to you.

Environmental support

Contact [sustainability@haworth.com](mailto:sustainability@haworth.com)

**HAWORTH®**