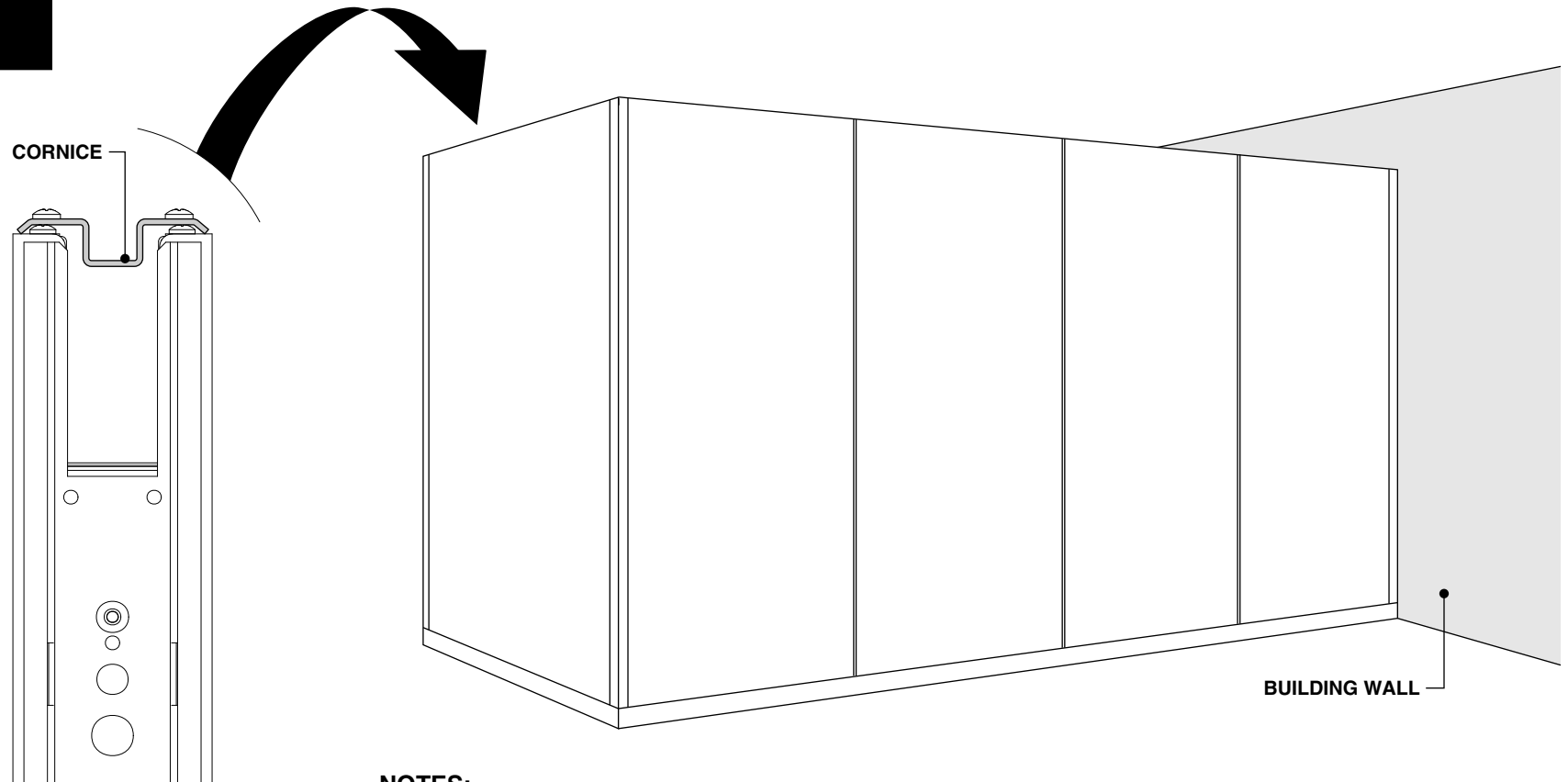


## Privacy Wall - Solid and Glass Wall Panels Cornice Application



### NOTES:

Please see "Cornice Application - Privacy Wall layout & application guidelines" for requirements & restrictions.

This assembly direction is supplemental to any Privacy Wall assembly directions which may apply to product being installed as long as requirements and restrictions from the cornice applications guidelines are met.

Please see the Privacy Wall assembly directions for typical product assembly not related specifically to the cornice.

If you have a problem, question, or request, call your local dealer, or Steelcase Line 1 at **888.STEELCASE** (888.783.3522) for immediate action by people who want to help you. (Outside the U.S.A., Canada, Mexico, Puerto Rico, and the U.S. Virgin Islands, call: 1.616.247.2500) Or visit our website: [www.steelcase.com](http://www.steelcase.com)

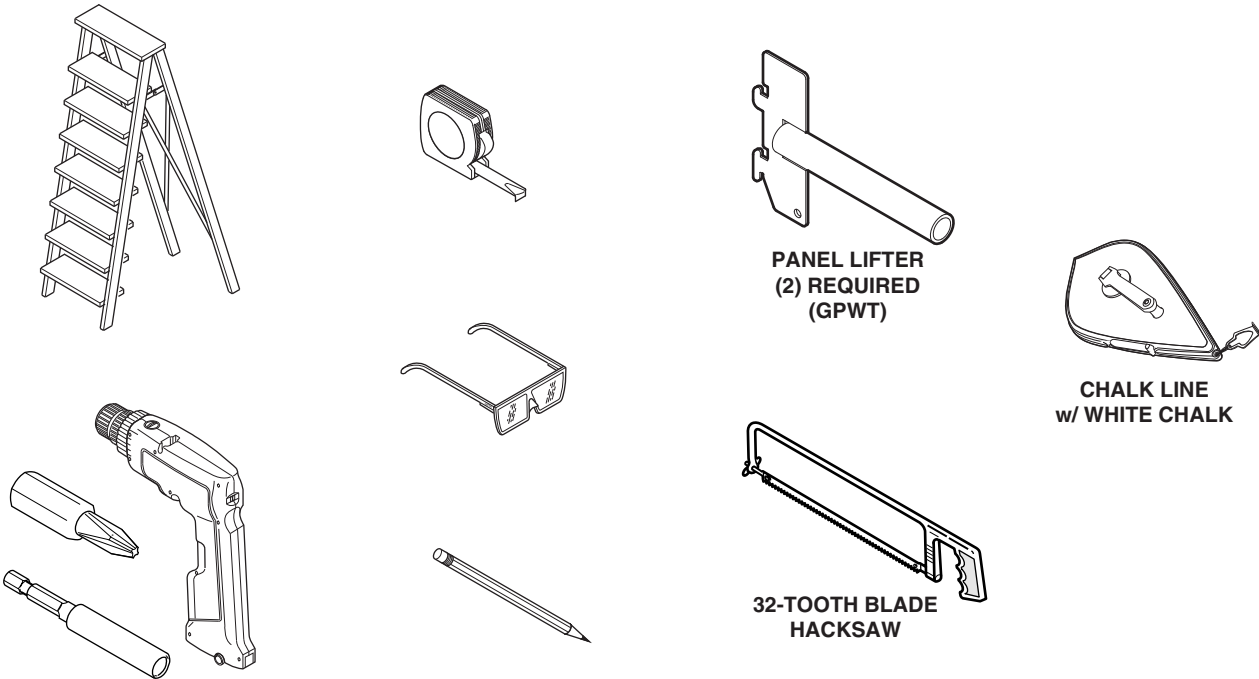
© 2006 Steelcase Inc.  
Grand Rapids, MI 49501  
U.S.A.

Printed in U.S.A.

Table of Contents

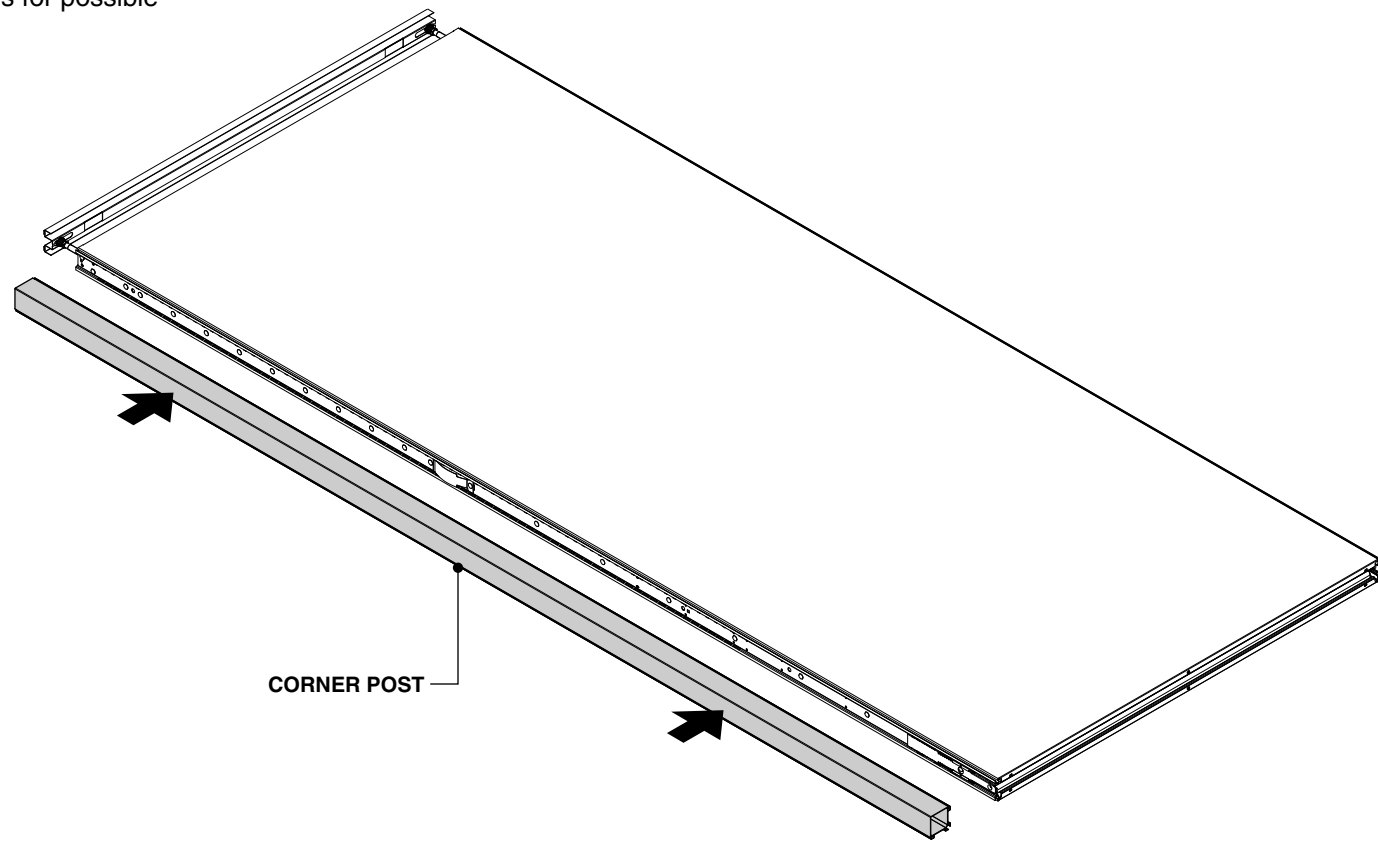
Topic	Page
How to Assemble a Corner	3-6
How to Assemble a Panel to a Wall	7
How to Assemble the Cornice Channel & Brackets	8-10
Layout and Application Guidelines	11-12

Tools



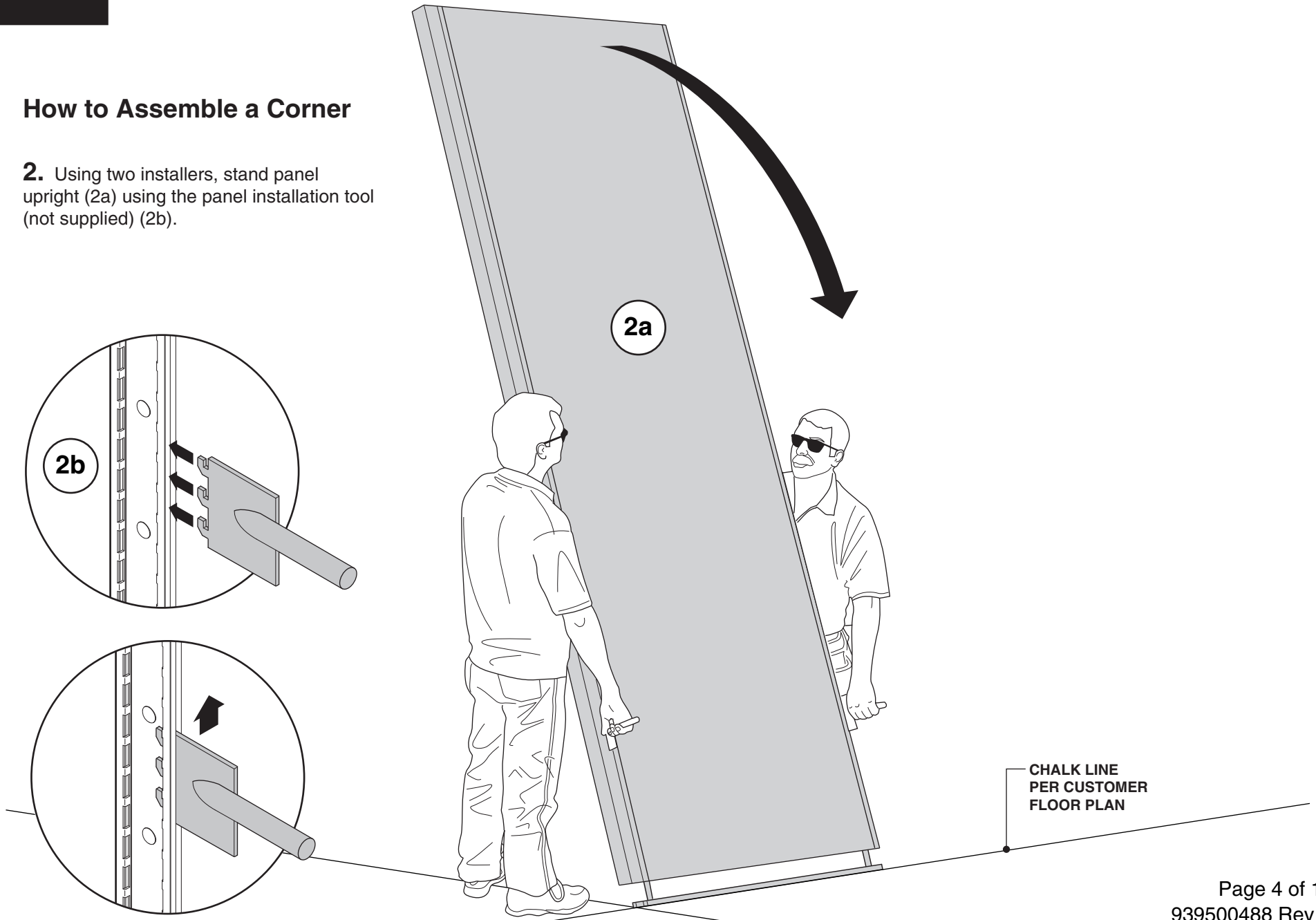
## How to Assemble a Corner

1. Place first panel flat on the floor. Slide a corner post (or centered panel connector) next to panel and connect using feature strips. (see cornice conditions for possible configurations)



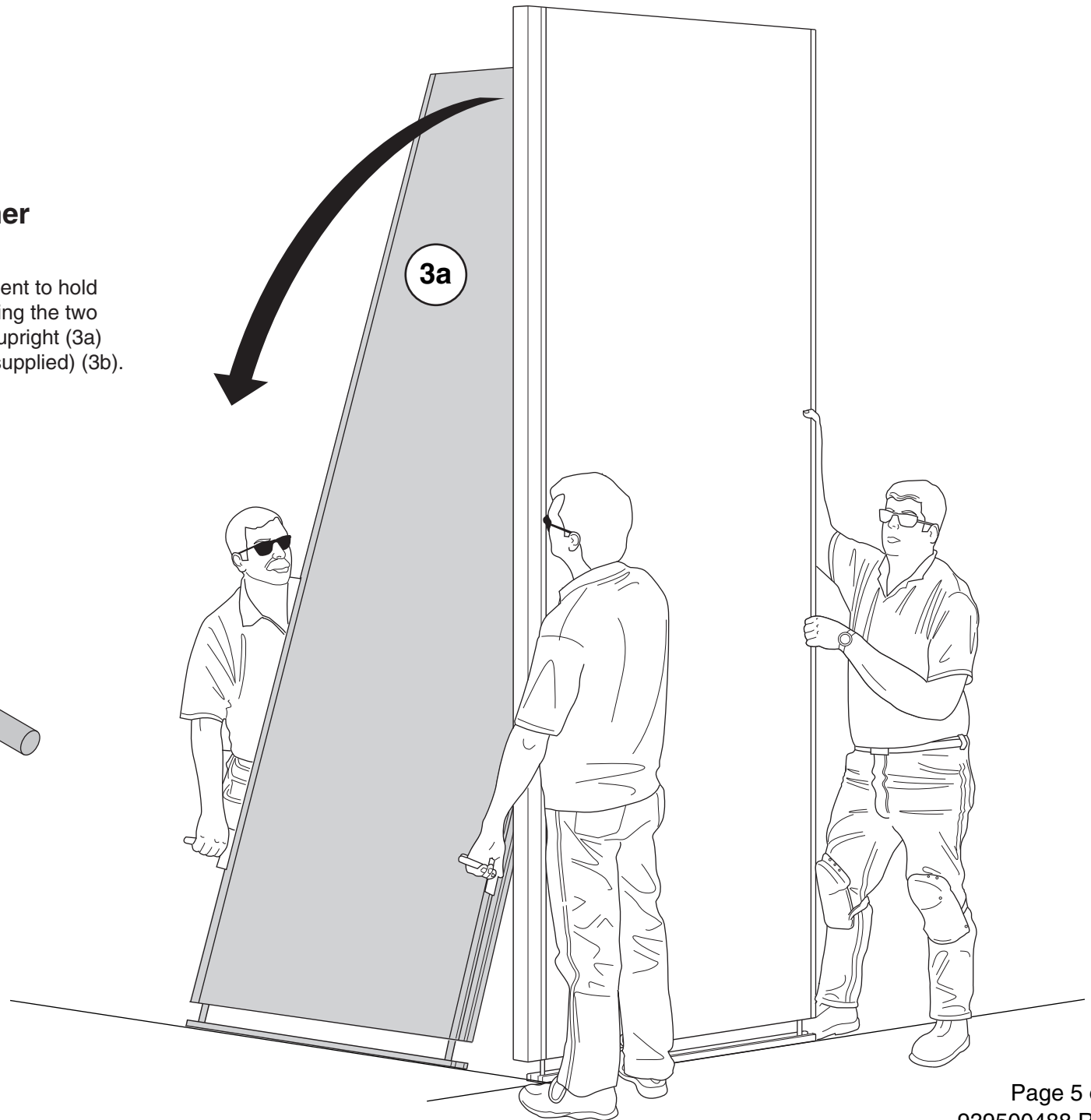
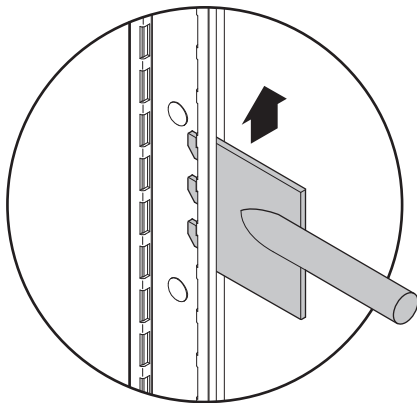
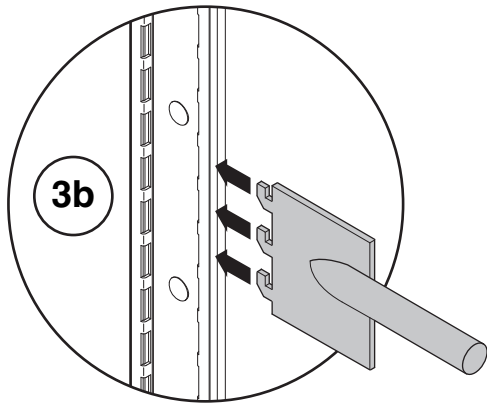
## How to Assemble a Corner

**2.** Using two installers, stand panel upright (2a) using the panel installation tool (not supplied) (2b).



## How to Assemble a Corner

**3.** Make sure a third installer is present to hold panel installed in step 2 in place. Using the two other installers, stand another panel upright (3a) using the panel installation tool (not supplied) (3b).

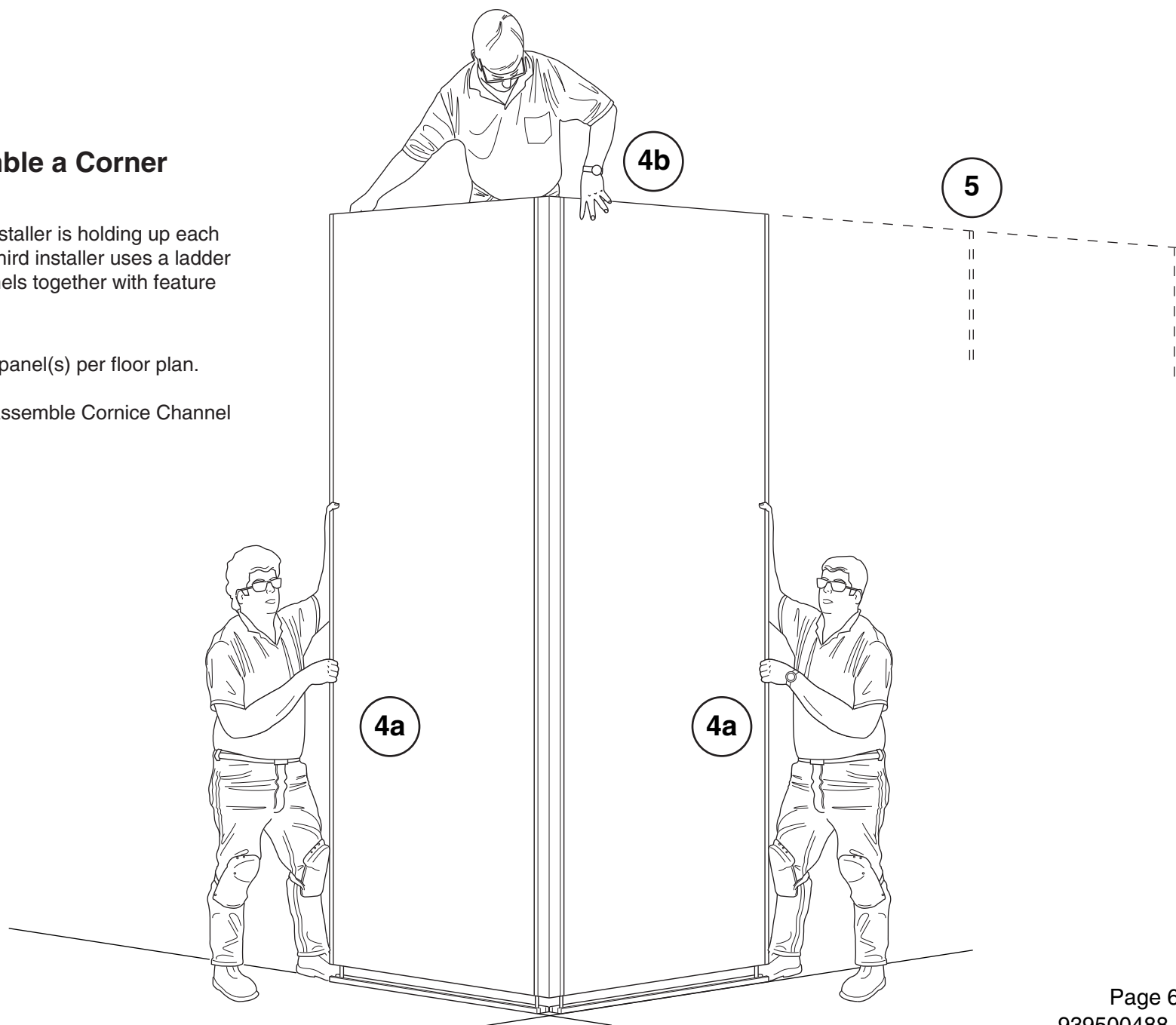


## How to Assemble a Corner

**4.** Make sure one installer is holding up each panel (4a) while the third installer uses a ladder to secure the two panels together with feature strips (4b).

**5.** Attach additional panel(s) per floor plan.

Proceed to "How to Assemble Cornice Channel & Brackets"



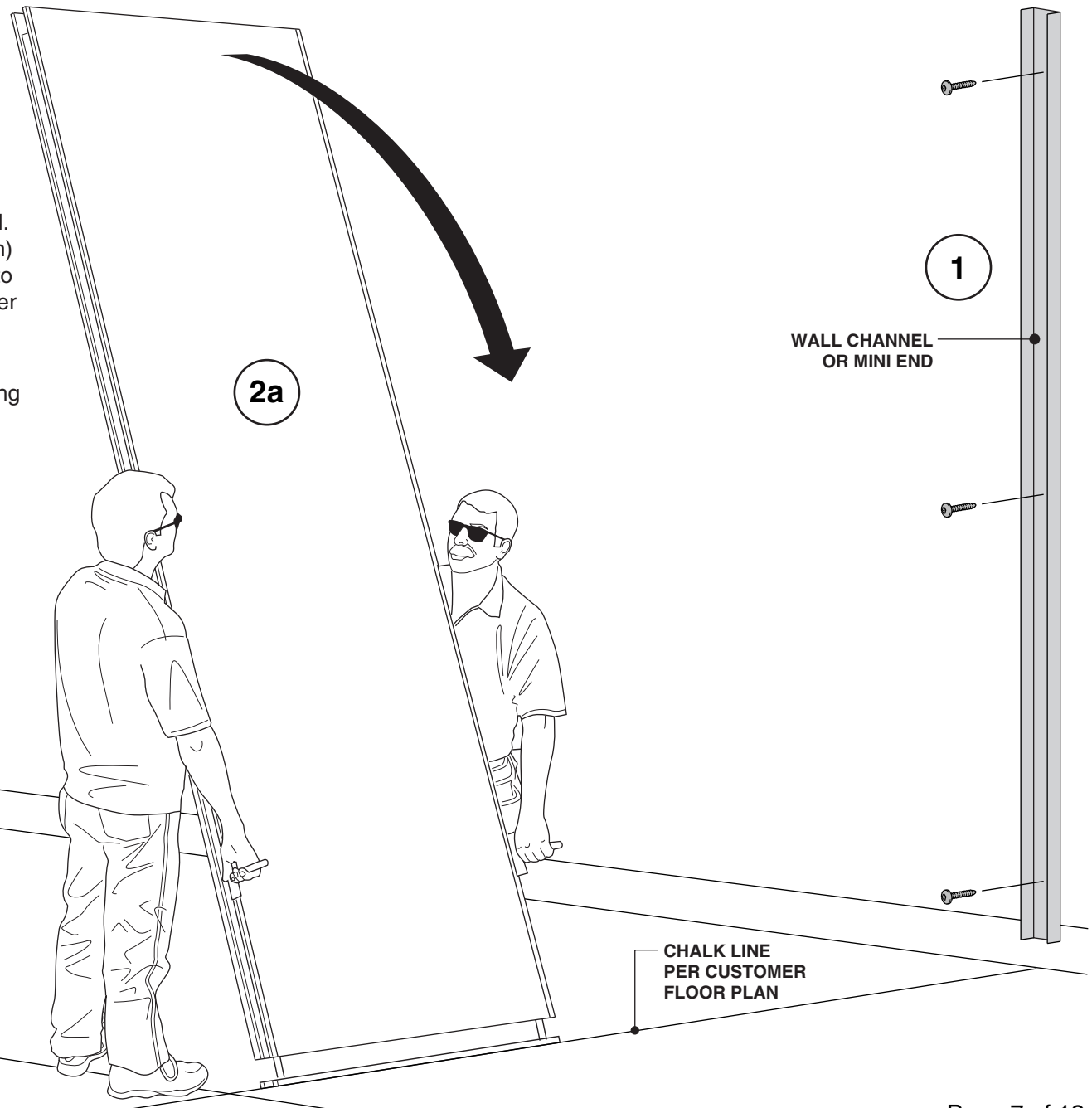
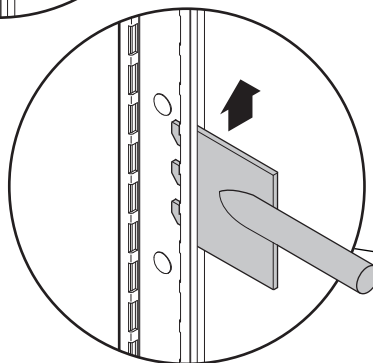
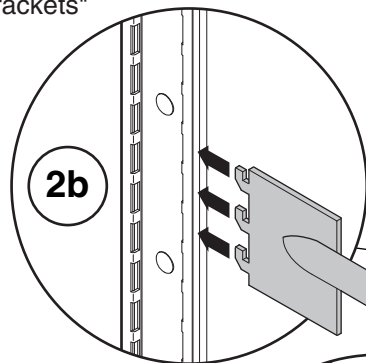
## How to Assemble a Panel to a Wall

**1.** Use at least three (3) fasteners to attach channel.  
(Refer to wall channel or mini end assembly direction)  
**NOTE:** For cornice applied product, it is necessary to mechanically fasten the wall channel or mini end inner channel to the building wall.

**2.** Using two installers, stand panel upright (2a) using the panel installation tool (not supplied) (2b).

**3.** Attach additional panel(s) per floor plan.

Proceed to "How to Assemble Cornice Channel & Brackets"

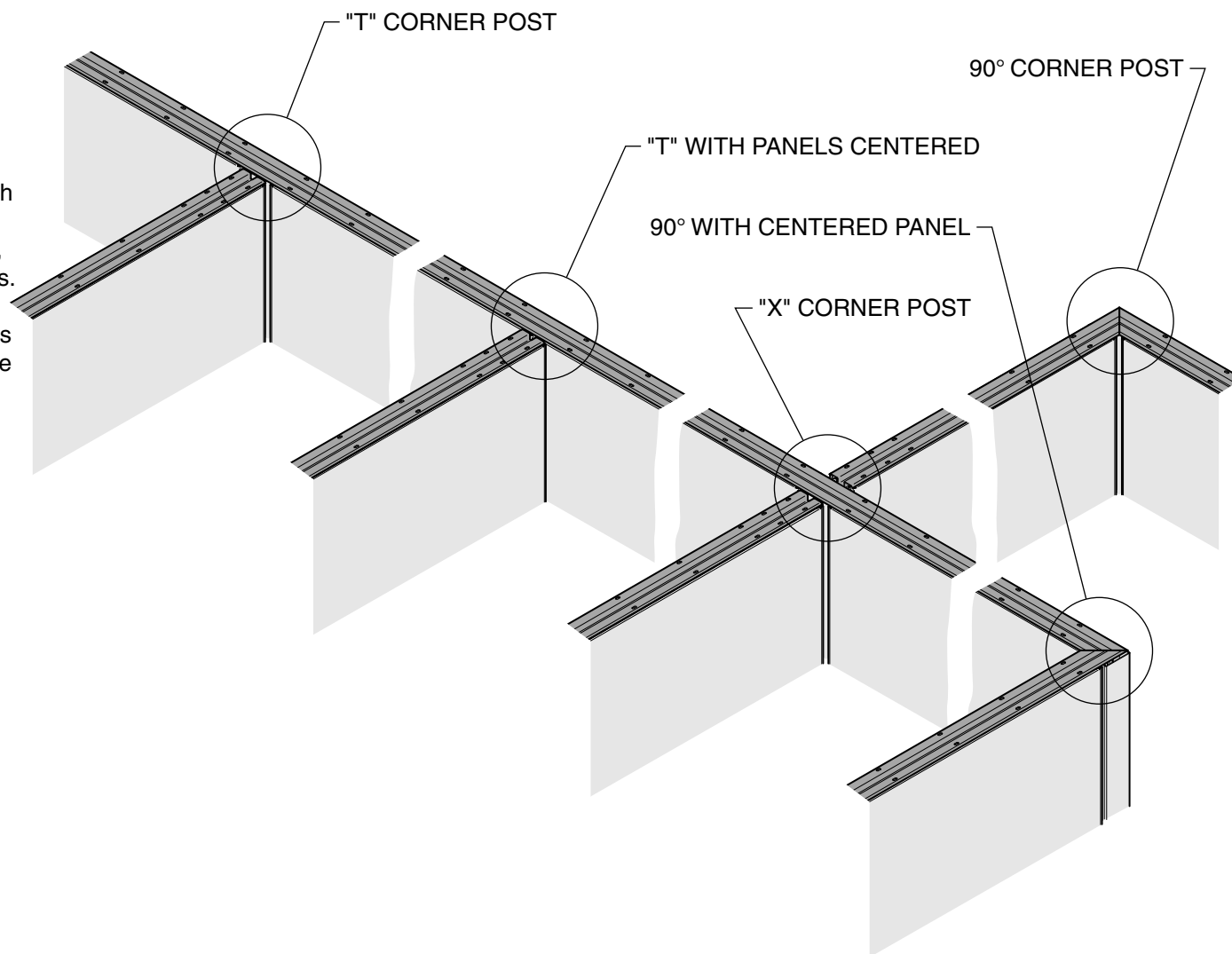


## How to Assemble Cornice Channel and Brackets

**1.** The cornice channel comes in 120 inch long sections. Cut cornice channel to length as required. Apply cornice channel, as shown, in the following panel conditions.

**NOTE:** Run the cornice channel across as many panels as a run will allow. Make sure the end of a cornice channel and the joint of two panels coming together are not aligned.

**2.** See page 10 to show how the cornice brackets are installed into the following panel conditions.

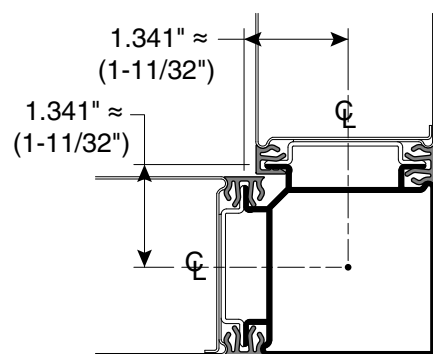




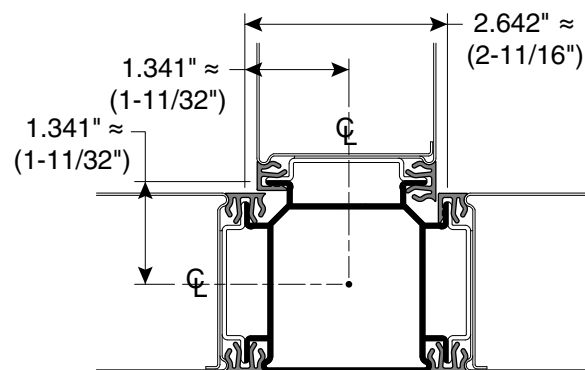
 = Inline Feature Strip

 = Half Feature Strip

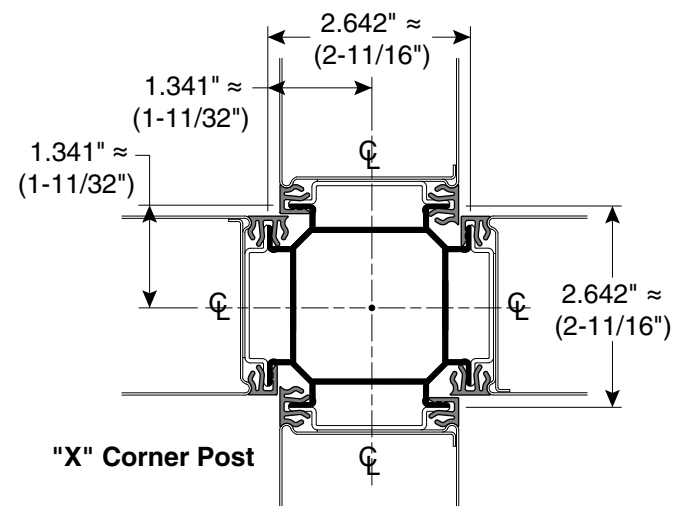
## How to Assemble Cornice Channel and Brackets



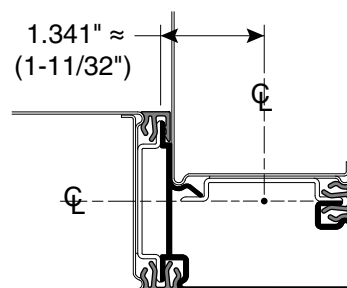
90° Corner Post



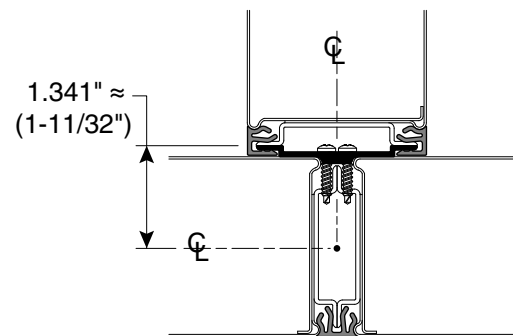
"T" Corner Post



"X" Corner Post



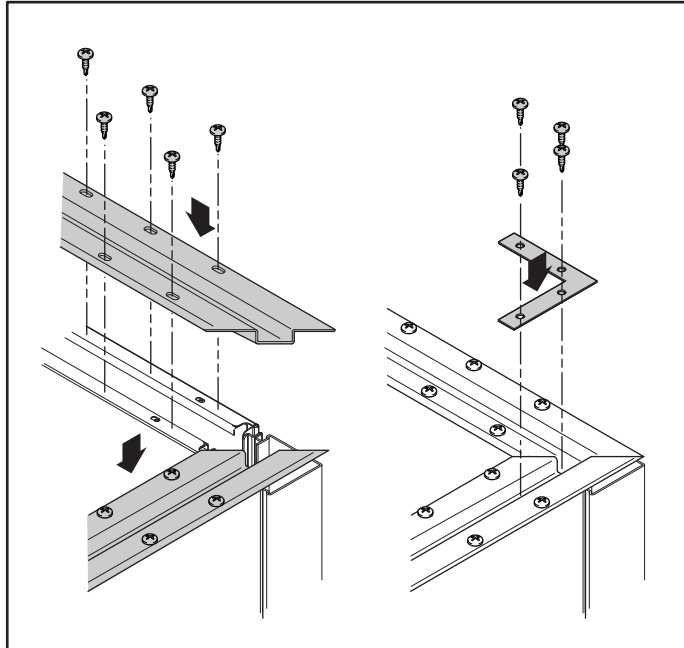
90° with Centered Panel



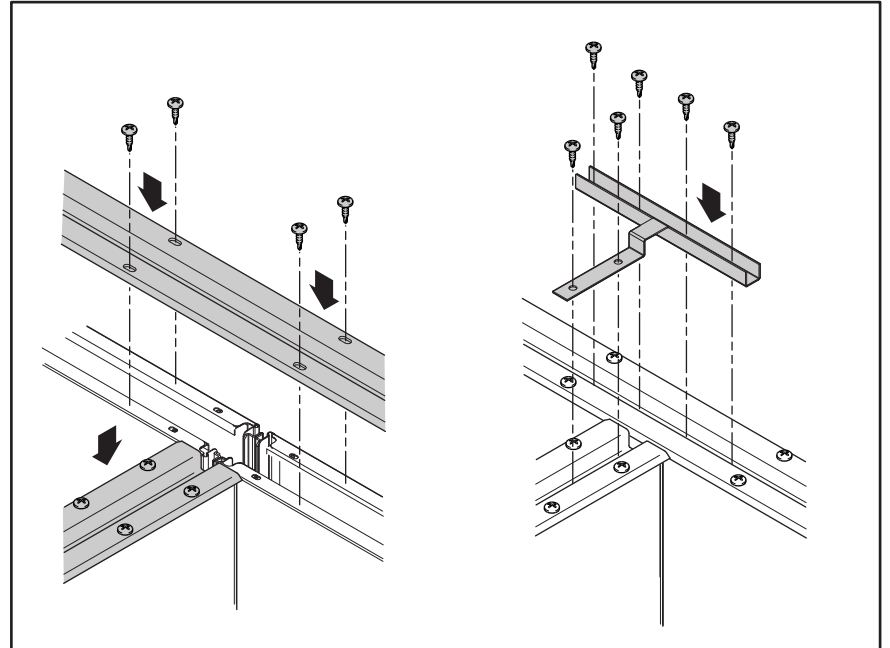
"T" with Panels Centered

## How to Assemble Cornice Channel and Brackets

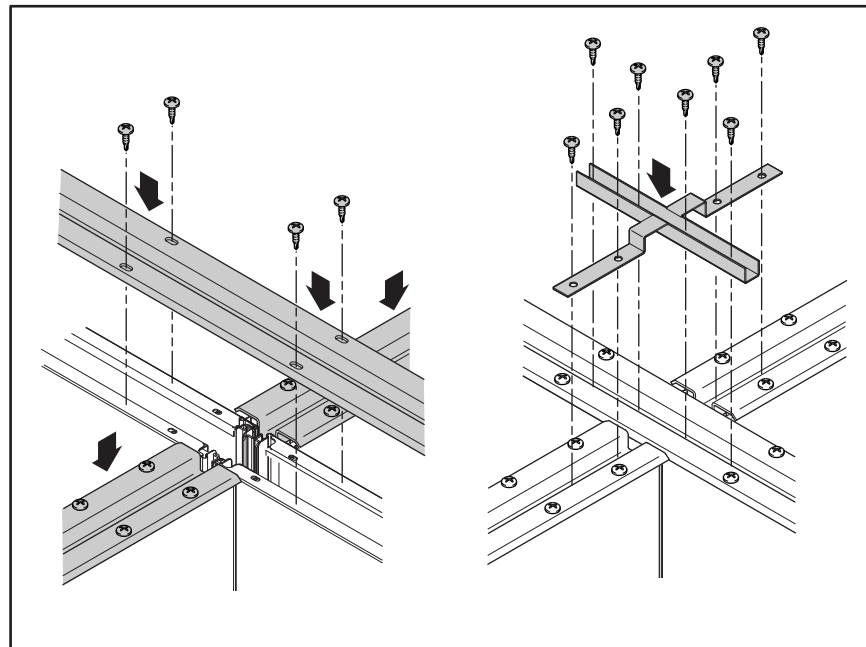
**90° Corner Post**



**"T" Corner Post**



**"X" Corner Post**



## Layout and Application Guidelines

**NOTE:** Cornice Channel must be ordered and installed for all freestanding (Cornice High) applications.

- 1.** Maximum runs for solid panels are 20 feet or 5 panels and both ends must terminate at an intersection or properly anchored termination (see note 4 below).
- 2.** Maximum runs for solid panels including a door unit is 16 feet, and both ends must terminate at an intersection or properly anchored termination (see note 4 below).
- 3.** A maximum run for all glass fronts with a door unit is 12 feet and both ends must terminate at an intersection or properly anchored termination (see note 4 below).
- 4.** Anchor butt-hinged door frames to the floor per the door assembly directions.
- 5.** Termination at wall channels or mini-ends requires a mechanical fastening to the foreign wall.
- 6.** Cornice high walls are not approved for seismic applications.
- 7.** Glass Selections is not approved for applications with Cornice Channel.
- 8.** Panel supported furniture should not be hung on Cornice High walls.
- 9.** Post and Beam, with a minimum beam length of 60", can be used for support in place of an intersection or termination, but only at one end of the wall. One end of the beam must be anchored to the floor or some permanent part of the structure.
- 10.** Cornice Channel must be installed per assembly directions.
- 11.** Cornice Channel must be ordered and installed with cornice brackets for L, T, and X intersections.
- 12.** Any height wall up to 10'-0" (nominal) can be used with cornice applications. However, the shorter the panel is, the more rigid the wall will feel.

***See sketch and notes on page 12.***

## Layout and Application Guidelines

